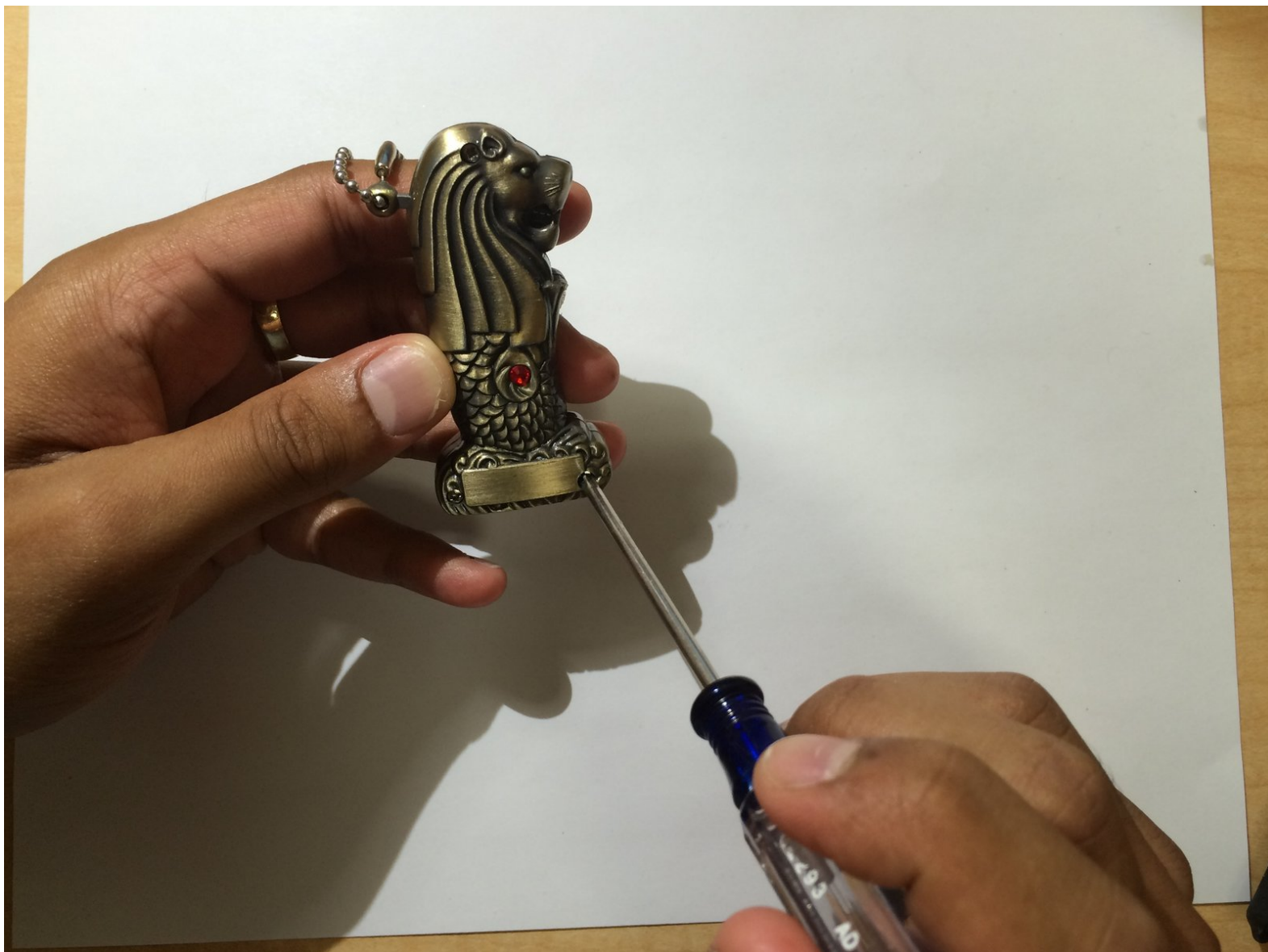




# How to Repair the Sparker on a Merlion Mini Torch

Learn how to adjust the sparker on a Merlion mini butane torch.

Written By: Neel Kogali



## INTRODUCTION

Is your torch full of butane but not lighting? Your sparker is probably misaligned from your butane tube. Use this guide to see how to fix it!



### TOOLS:

- [Screwdriver](#) (1)
  - [Slip Joint Pliers](#) (1)
  - [Butane](#) (1)
-

## Step 1 — How to Repair the Sparker on a Merlion Mini Torch



- Use the screwdriver to remove all the 1.2 mm Phillips #1 countersunk screws from the torch.

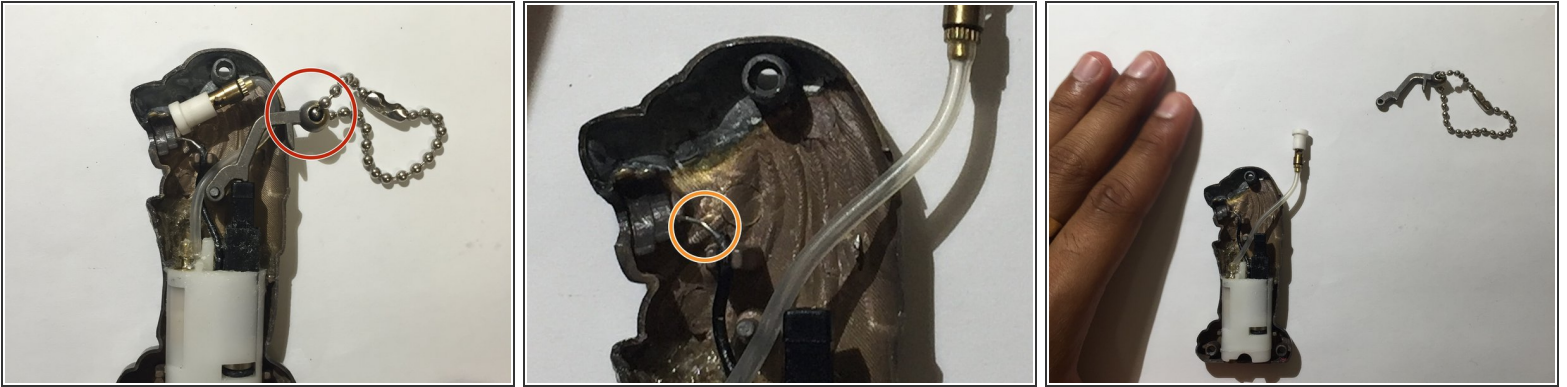
## Step 2



- Open up the torch.
- Set aside the empty side of the torch.



### Step 3



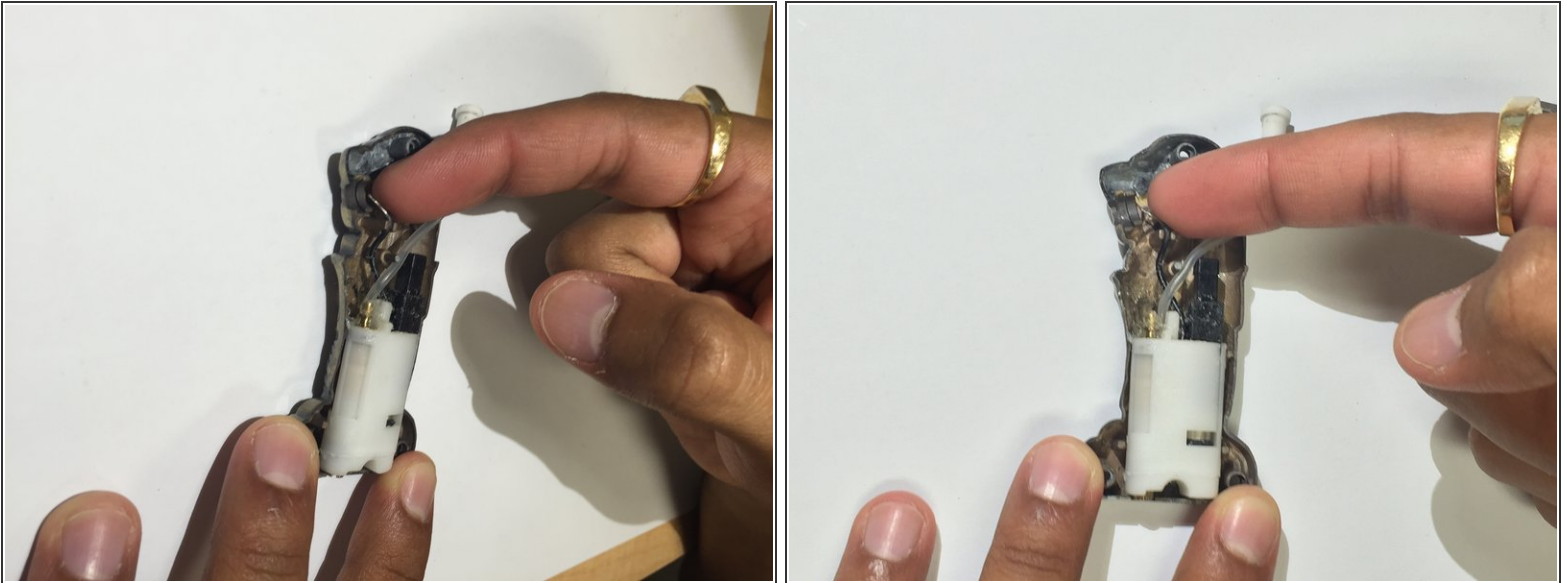
- Pull the handle down as if you were to use the torch.
- You will see one of the parts inside spark. This is the sparker.
- Now gently remove the handle and set it aside.

### Step 4



- Grab your pliers and GENTLY tug the sparker towards the Merlion head until it is extended about a centimeter.

## Step 5



- Gently bend the sparker until it is positioned near the opening of the Merlion's mouth.

## Step 6



- Grab the tube and gently bend it so it faces the opening of the Merlion's mouth.
- Put the handle back on the torch.

## Step 7



- Take the empty half of the torch and place it over the other half.

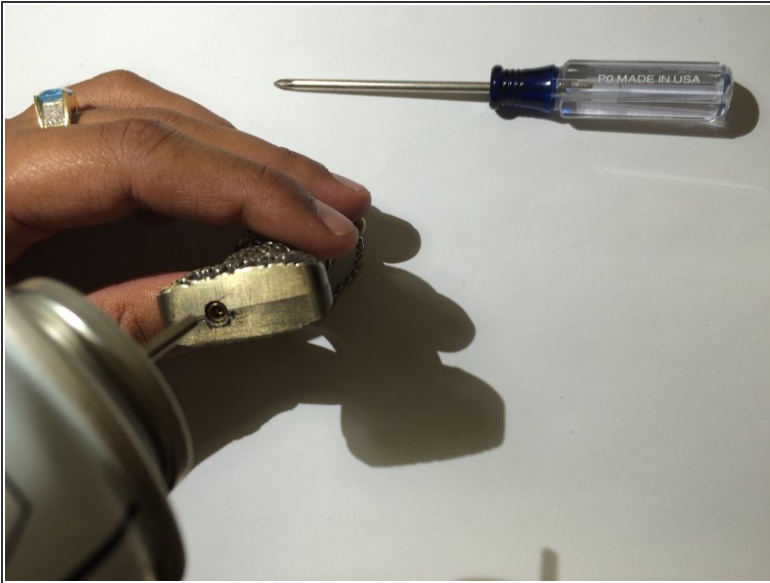
## Step 8



- Use the screwdriver to put the screws back in the torch.



## Step 9



- Hold the torch upside down and position the butane above the torch's hole.
- Gently press down for five seconds.

Congrats! Now you can use your Merlion torch again.