



# How to Replace Concealed Cabinet Hinges

Replacing and aligning a concealed cabinet door hinge. This is useful if you have interior hinges that are hidden inside of the cabinet.

Written By: Naomi Frazier



---

## INTRODUCTION

This is a simple process that requires little skill and only one tool, but is valuable as hinges may become loose or broken with use. Concealed hinges are completely hidden from view when the cabinet door is closed. These kinds of hinges are common in many households and other establishments, and we feel this guide will be helpful to those in need of repair.



### TOOLS:

- [Phillips #2 Screwdriver](#) (1)
-

## Step 1 — Hinge



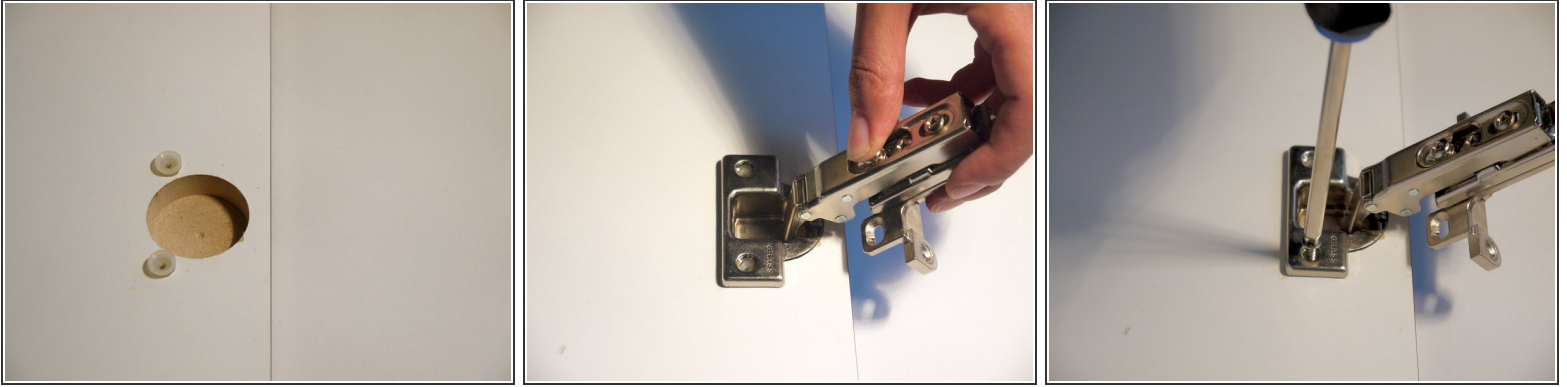
- Remove the screws that are attached to the cabinet door.
  - ⓘ Unscrew the top and bottom hinges even if you are only replacing one hinge.
- Remove the cabinet door from the hinge.
  - ⓘ You may need to wiggle or pry the door off.

## Step 2



- Remove the screws that go into the cabinet frame from the hinge, then remove the hinge.
  - ⓘ Only the hinge being replaced needs to be removed.

### Step 3



- Insert the new hinge into the cabinet door's pre-cut hole.
- Attach the hinge with the provided screws.
- ⓘ To avoid striping the screws, do not over tighten.

### Step 4



- Reattach the cabinet door to the cabinet frame.
- ⚠ Do not tighten the screws all the way. You will need to align the door later.
- ⓘ You may need a friend to hold the door while you screw it back into place.



## Step 5



- Lift or lower the cabinet door to align the hinges with its original location.
  - ❗ Changes in wood stain can serve as a useful alignment guide.
- Tighten all the screws.

## Step 6



- ❗ Use this step to adjust the amount of space between the cabinet door and the cabinet frame.
  - Loosen the adjustment screws, but do not remove them.
  - Slide the cabinet door to your desired position.
  - Tighten the screws.

## Step 7



- i Use this step if your cabinet door closes too hard or does not completely close.
- Tighten this screw to keep the cabinet door from closing too hard. Loosen the screw to allow the cabinet door to close completely.
- ! Do not completely remove this screw.