



How to Replace a Cabinet Door

Removing and replacing a cabinet door.

Written By: Kayleah Cumpian



INTRODUCTION

Need to remove or replace an old cabinet door? Here's an easy step by step guide on removing and replacing a cabinet door using only a screwdriver.



TOOLS:

- [Phillips or Flathead Screwdriver](#) (1)



PARTS:

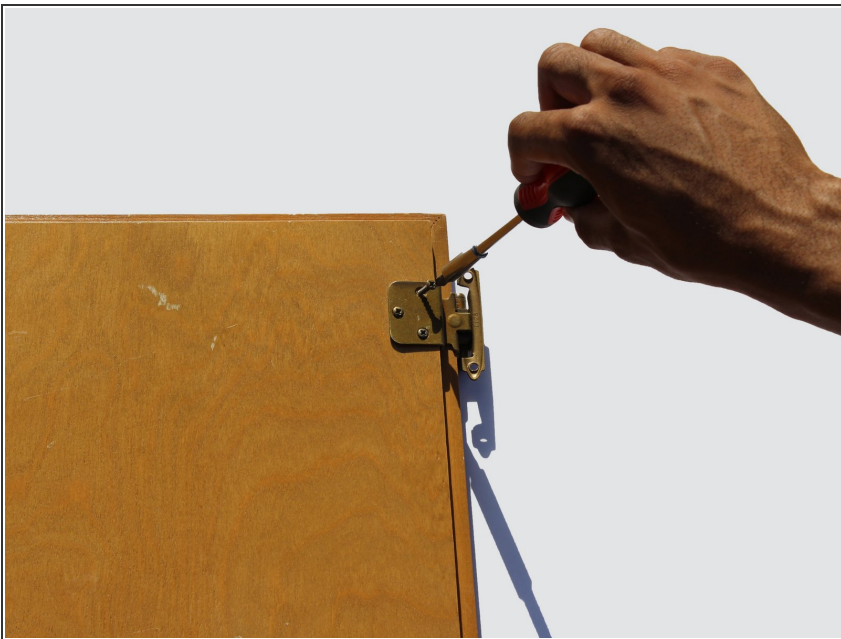
- [Replacement Cabinet Door](#) (1)
- [Hinges](#) (1)
- [Screws](#) (1)

Step 1 — Cabinet Door



- Using a screwdriver, either a Flathead or a Phillips, remove the screws starting from the bottom of the door all the way to the top of the door to prevent the door from swinging.

Step 2



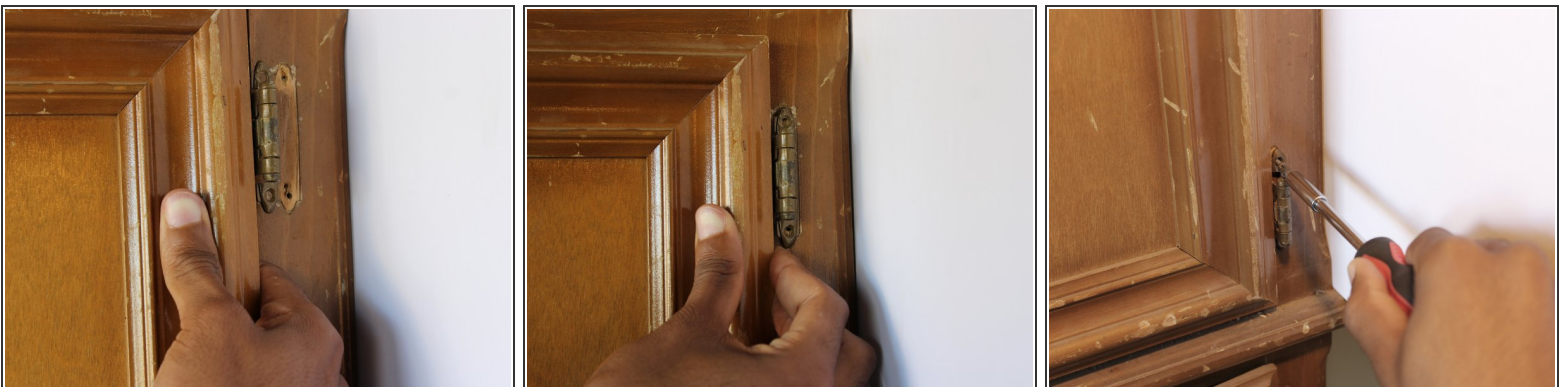
- Next using a screwdriver, remove the screws attaching the hinge to the door.

Step 3



- Place the new cabinet on a flat surface. Then line up the old (or new) hinge's to holes on the door.

Step 4



- Finally, line up the hinge's holes with the holes from the previous cabinet door. Then screw the new door on.

To reassemble your device, follow these instructions in reverse order.