



# How to Replace the Battery of a TI-Nspire CX

Learn how to replace the battery in a TI-Nspire CX.

Written By: Jim Kerman



## INTRODUCTION

The rechargeable battery in the TI-Nspire CX can lose its ability to hold charge over time. Use this guide to replace the battery and return your calculator to optimum condition.



### TOOLS:

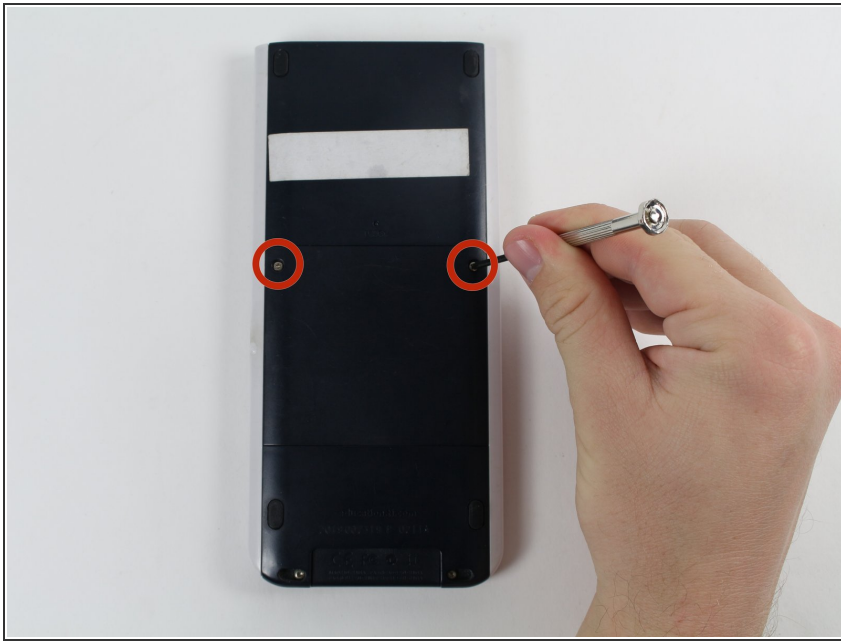
- [Phillips #0 Screwdriver](#) (1)
- [Spudger](#) (1)



### PARTS:

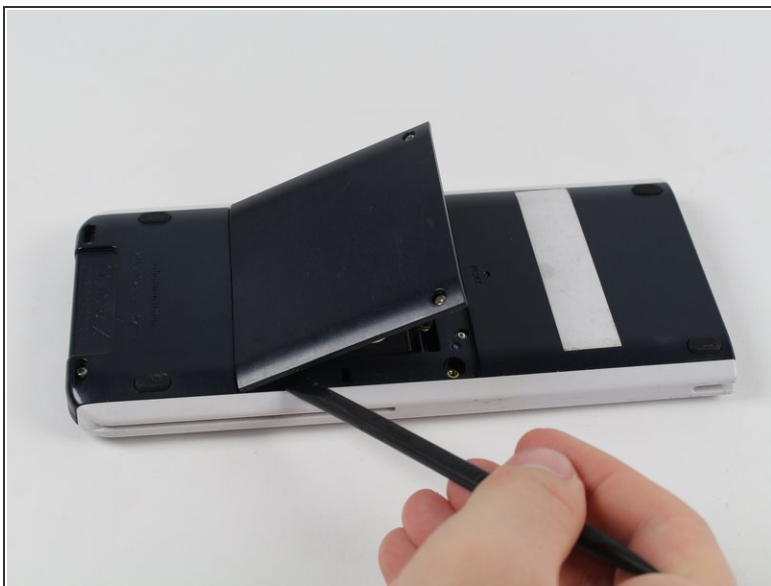
- [TI-Nspire Rechargeable Battery](#) (1)

## Step 1 — Rechargeable Battery



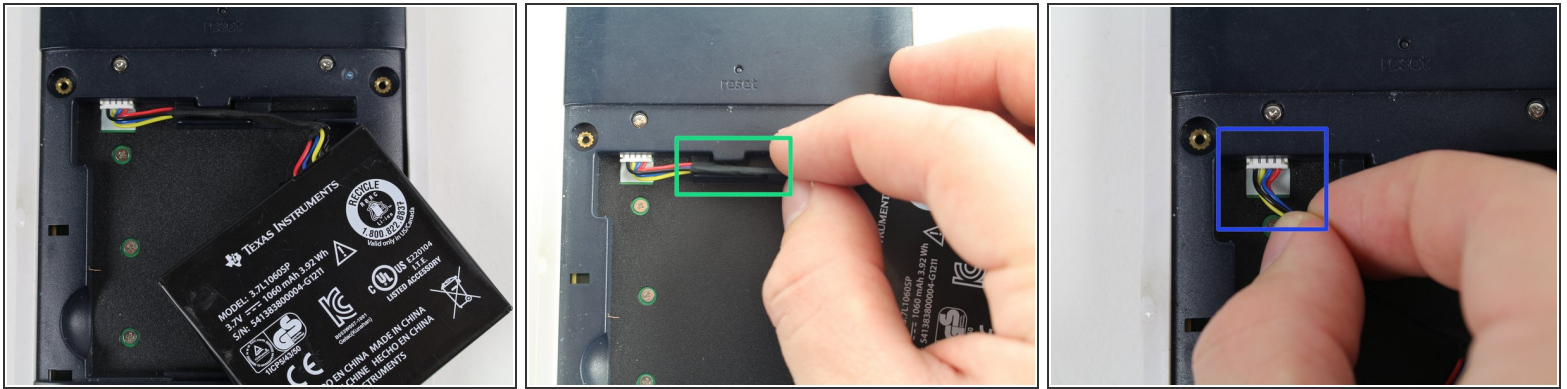
- Unscrew the 2 Phillips #0 screws from the back plate of the calculator.
- ⓘ The screws do not come all the way out. Simply twist them until you are able to remove the back plate.

## Step 2



- Remove the back plate using the spudger or by hand.

## Step 3



- Carefully disconnect and remove the old battery.
  - Unhook the wire from the tab.
  - Carefully pull out the wire.
  - ⓘ Grip the wire close to the top and pull away.

## Step 4



- Plug in the new battery.
  - ☑ Make sure to put the wire back in the same way. You should see 4 metal connections on top



## Step 5



- Position the new battery and tuck the wire under the tab.

## Step 6



- Replace the back plate and the 2 screws.

Now charge your calculator and power it up. If replacing the battery does not solve your problem, it may be a problem with your charging cord or the internal sockets.

