



# How to Replace the Front-Turn Signal Bulb in a 2011 Subaru Impreza Outback Sport

Learn how to replace the front-turn signal bulb in your Subaru.

Written By: Austin Roberts



## INTRODUCTION

Is your front-turn signal light bulb in your 2011 Subaru Impreza Outback Sport going out? Use this guide to replace the dead bulb with a new one and have a working turn signal again.



### TOOLS:

- [Flathead Screwdriver](#) (1)



### PARTS:

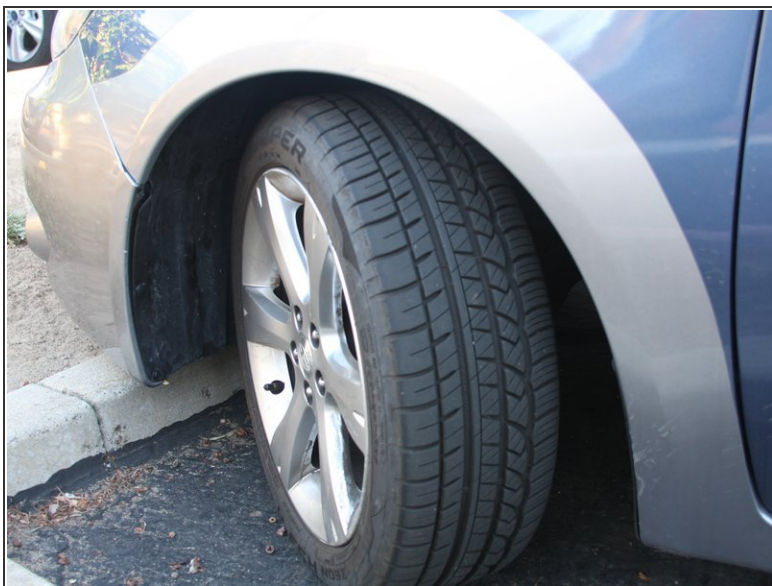
- [1157NALL Light Bulb](#) (1)

## Step 1 — Front-Turn Signal Bulb in a 2011 Subaru Impreza Outback Sport




- First, check to see if your front-turn signal is not working properly or not bright enough.

## Step 2



- Turn on your car and turn your wheels so that you have access to the headlights and front-turn signal.

 Make sure the car is in park and turned off before you begin making your repair.



### Step 3



- Use a flathead screwdriver and your hand to loosen the panel.
- Pry the front bumper open away from the black panel.

### Step 4



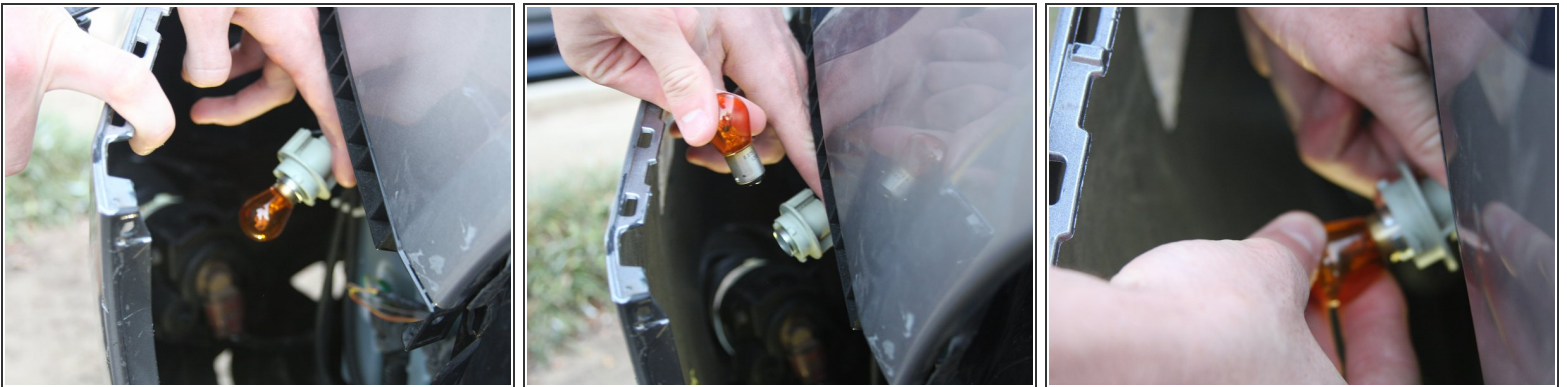
- Look inside of the bumper and up towards where the headlights and front-turn signal are.
- Locate the white bulb socket for the front-turn signal.
- Reach inside and grab the white bulb socket
- Twist counter-clockwise to remove the bulb and socket from their position.

## Step 5



- You should see the bulb being removed from its front-turn signal location.

## Step 6



- Pull the bulb socket and bulb out to an easy to handle area.
- Remove the nonfunctioning bulb from the bulb socket.
- Insert new bulb into the bulb socket and twist clockwise until it is tightly fastened.

## Step 7



- Now your front-turn signal should be working properly.

To reassemble your device, follow these instructions in reverse order.