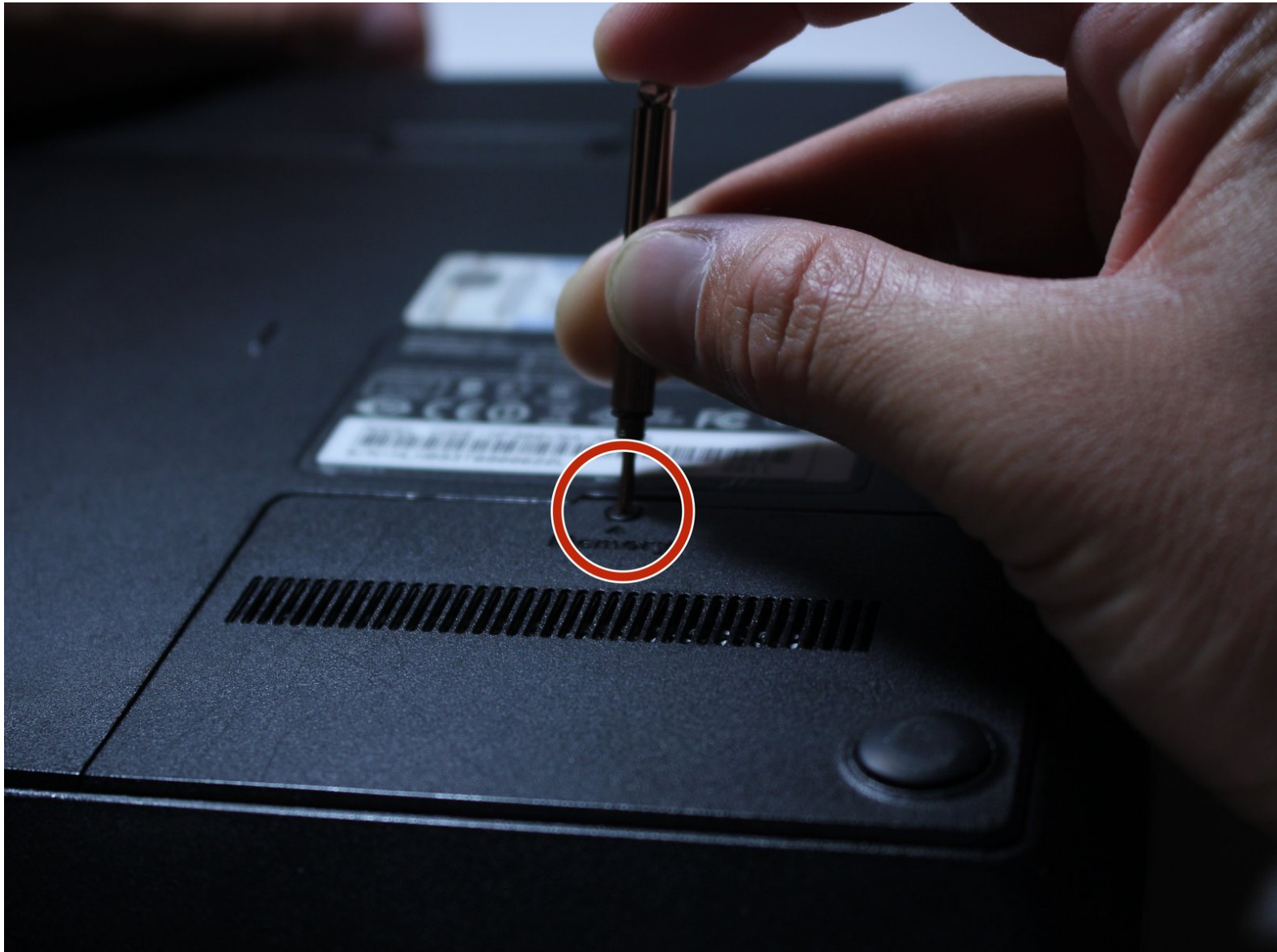




How to Replace the Wi-Fi Card for a Samsung NP300V5A-A08US Laptop

How to Replace the Wi-Fi Card for your Samsung NP300V5A-A08US Laptop.

Written By: Ryan Miller



INTRODUCTION

Is your internet intermittent or your computer not connecting to your Wi-Fi? You may have a faulty Wi-Fi card, and luckily they are fairly cheap to replace.



TOOLS:

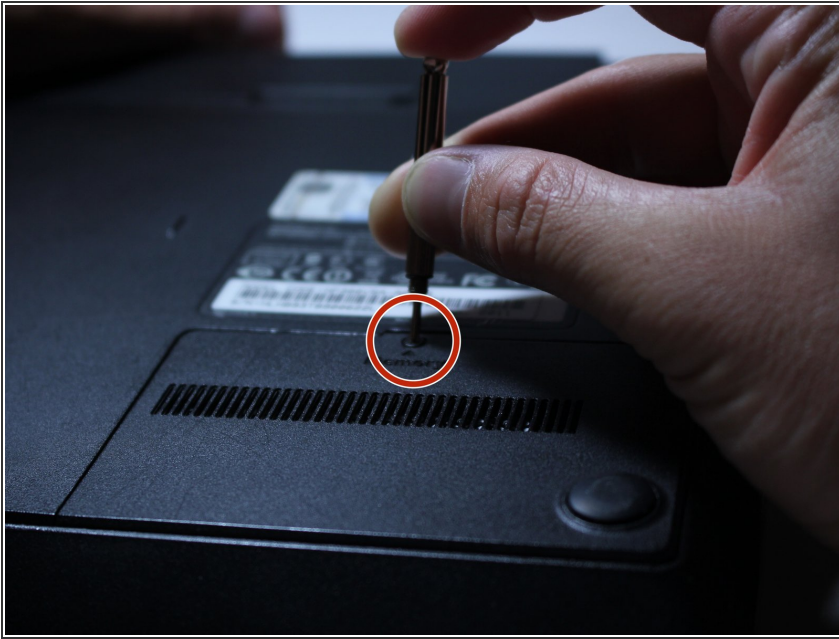
- [Tweezers](#) (1)
- [Phillips #00 Screwdriver](#) (1)
- [Flathead 3/32" or 2.5 mm Screwdriver](#) (1)



PARTS:

- [Intel Centrino Wireless-N 130](#) (1)

Step 1 — Wi-Fi Card



- First make sure your computer is properly and completely shutdown.
- Make sure to unplug anything connected to your computer, including the charger and USB drives.
- Start by unscrewing the small panel on the bottom right of the computer.
- ⓘ There is only one screw to remove in this step.
- ⓘ Throughout the entire guide, there is only one 4.5mm screw. The rest of the screws in this guide are 6.5mm screws. Both types are size #00 Phillips heads.

Step 2



- Use the flat head side of the screwdriver to pry up the plastic snaps near the screw hole.
- ⓘ It is normal to hear noises similar to that of plastic snapping, when prying up the plastic cover.
- Use your finger and the flat head screwdriver to pry up the plastic cover.

Step 3



- Remove the rubber pads on the remaining 3 corners of the computer.
- Use the tip of the flat head screwdriver to pop off the rubber pads.
- ⓘ There is adhesive glue used to hold the rubber pads on. It may take more effort to take these off.

Step 4



- Remove each of these 3 screws using the screwdriver.

⚠ During this tear down process of your computer, make sure to place the parts you have taken off in an organized manner so that you know what goes where, when you are reassembling your computer.

Step 5



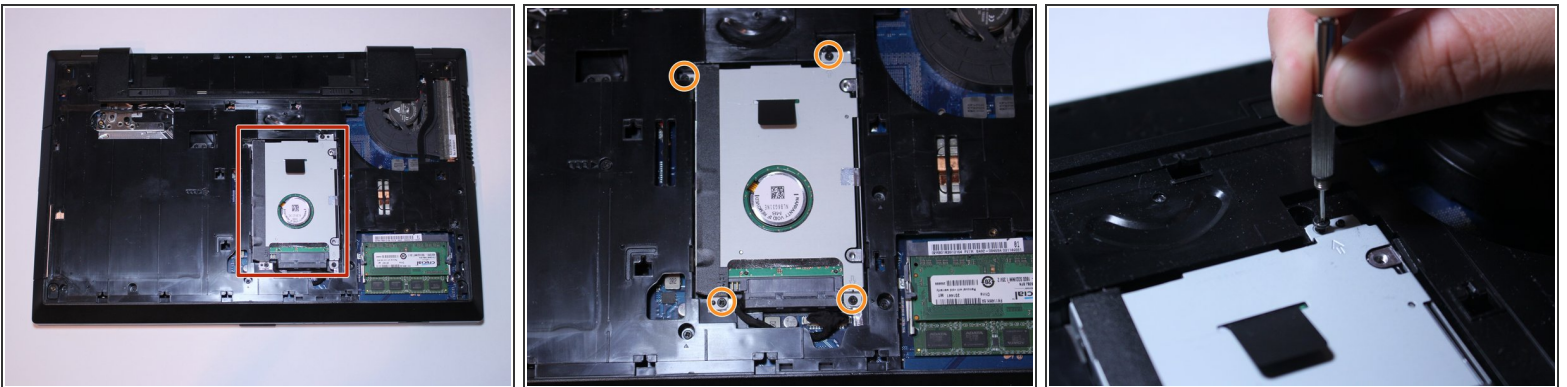
- Remove your battery by sliding the little tabs in the directions of the arrows printed on the computer.
- While doing this, slide the battery out.

Step 6



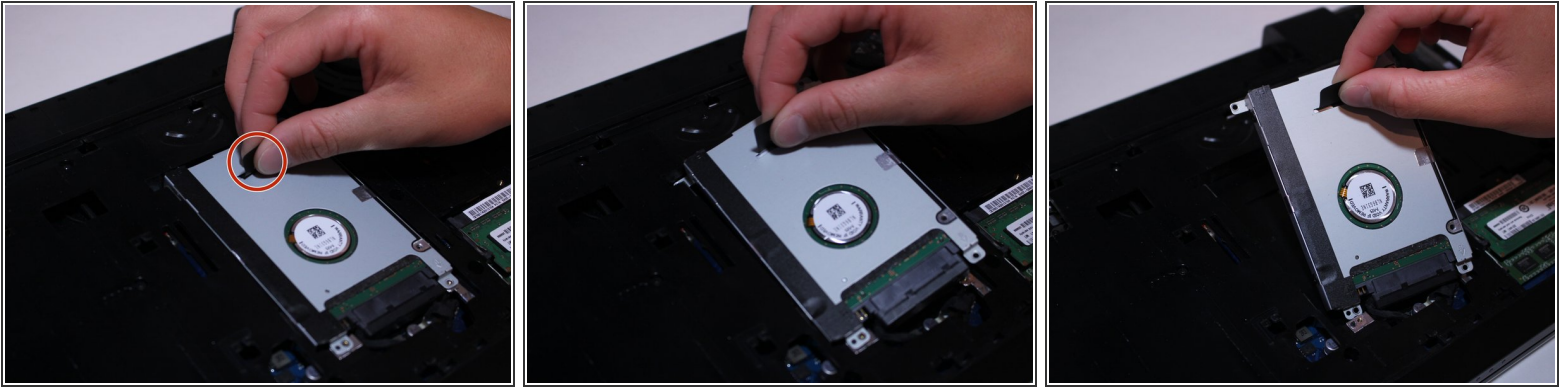
- Put your hands on the back panel and use pressure to slide the panel down a few millimeters (as shown in the photo).
- This frees up the pack panel and you can lift it right off after sliding it down.

Step 7



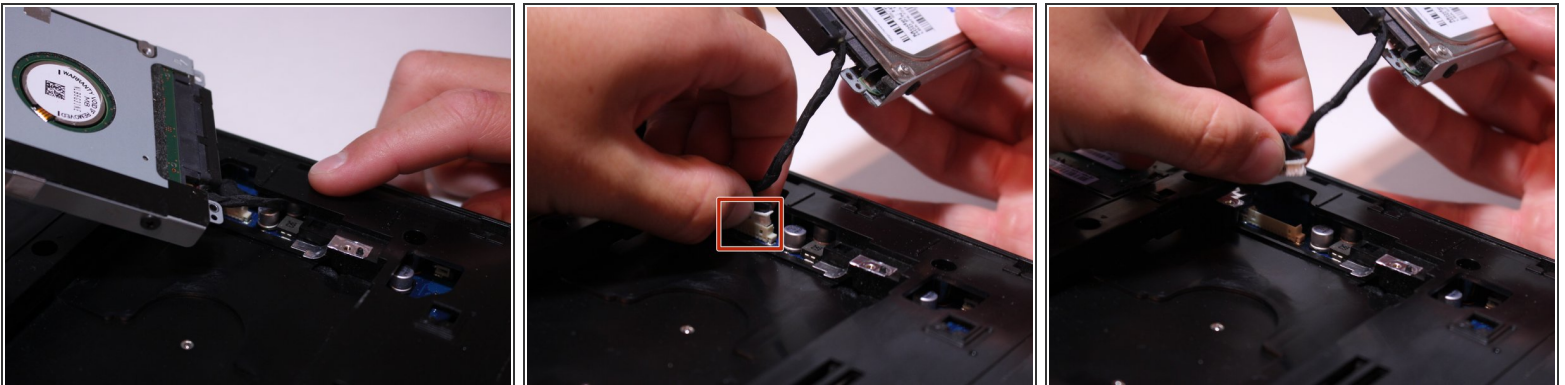
- This is the hard drive. You need to remove it in order to get to the rest of the computer.
- Remove all 4 screws holding the hard drive in with the screwdriver.

Step 8



- While holding onto the black plastic tab, pull up and to the right to remove the hard drive.
- i** The next step deals with the removal of the cable attached to the computer from the hard drive.

Step 9



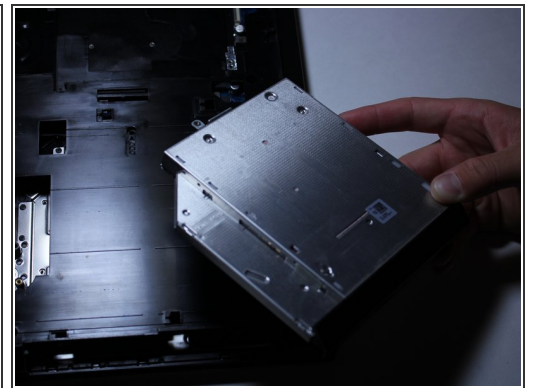
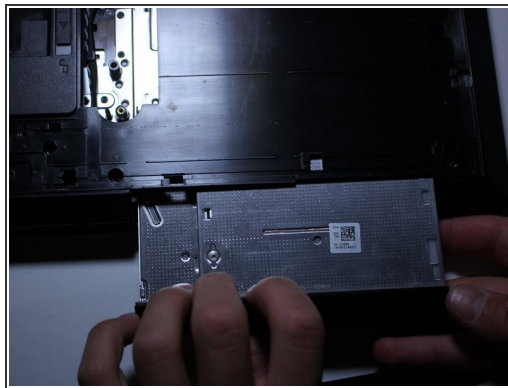
- i** Take note of how the wire harness is routed around the piece of the motherboard and the plastic casing.
- Gently pull on the wire harness to get it out of the crevasse.
- Gently grab a hold of the white plastic end of the wire harness with your fingers or fingernails.
- !** Be careful to not pull on the wires themselves as they may become disconnected from the white plastic connector.
- Carefully wiggle the plastic connector back and forth until you are able to smoothly disconnect the wire harness from the computer.

Step 10



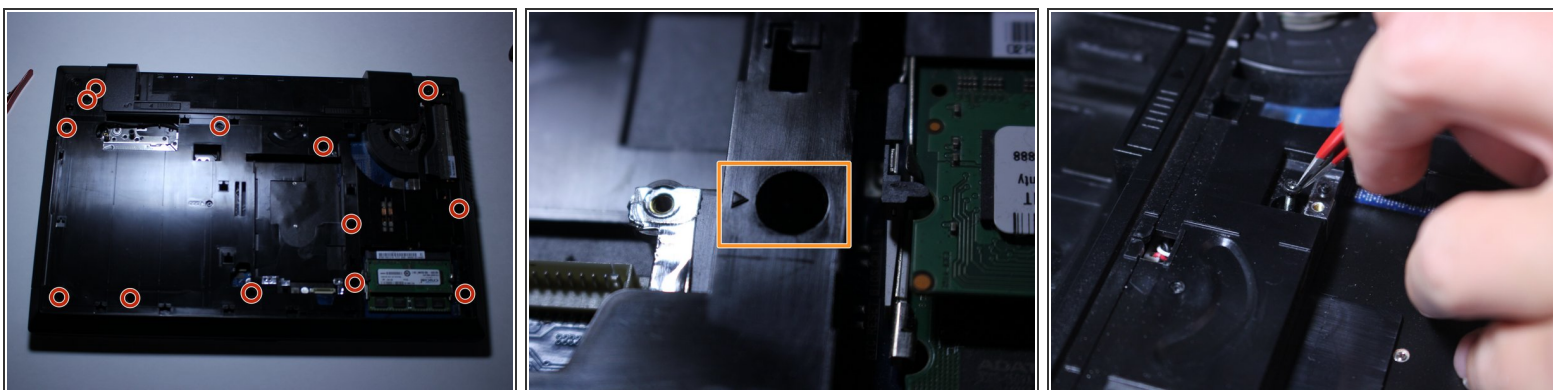
- Locate the screw next to the "ODD" print as indicated in the photo.
- Remove this screw with the screwdriver.

Step 11



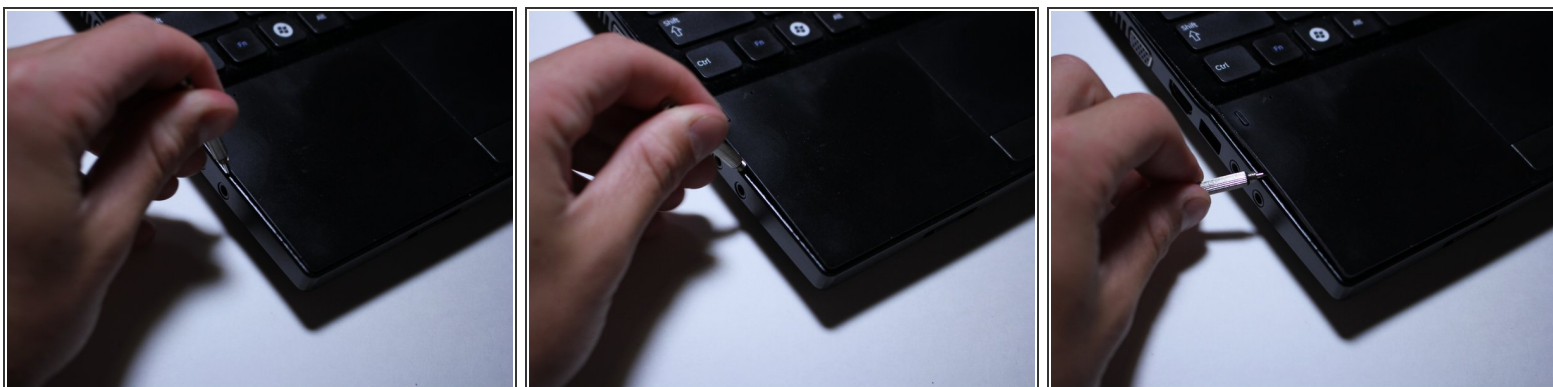
- Stick your fingernails between the slight gap where the Optical Disk Drive slides out and the plastic frame of the computer.
- Using your hand (you might need to use both), pull outwards to slowly remove your Optical Disk Drive from your computer.

Step 12



- There are thirteen 6.5mm screws you need to remove in this step.
- Each screw location is designated by the arrow icon highlighted in orange in the second photo.
- ⓘ Use your tweezers to remove loosened screws.

Step 13



- The next several steps will show you how to remove the outer shell of the computer.
- Use the flat head of your screwdriver to pry apart the two pieces of plastic.
- There is a discrete little line between the two pieces of plastic on the side of the keyboard.
- ⓘ A popping or snapping sound in the next couple steps is normal.

Step 14



- It is easier if you start on the headphone jack side of the computer.
- Slowly start making your way around the edge of the keyboard, prying the two pieces apart.

Step 15



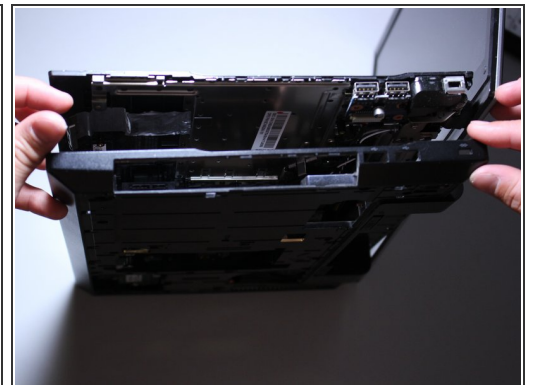
- Work your way around the back corners of the computer as well.

Step 16



- You also have to get the skinny area where the battery port is.
 - This is easiest to get to by closing the computer shut.
- Open the computer back up and work your way around to the other side of the computer where the Optical Disk Drive was.
- ⓘ When you start to get most of the two plastic pieces disconnected, you can just use your hands to pop-it apart.

Step 17



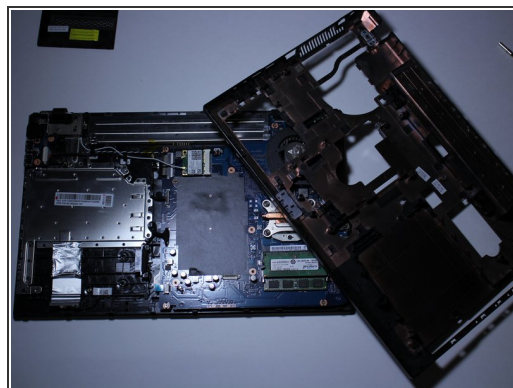
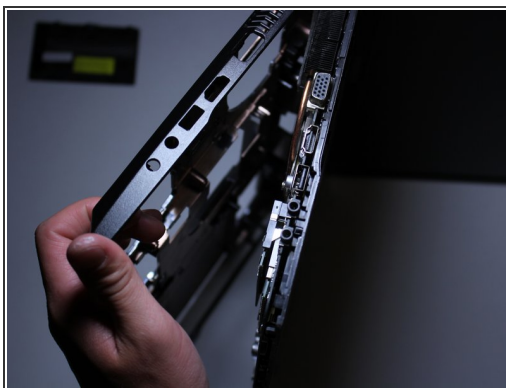
- Further make your way around the edges separating the two pieces.

Step 18



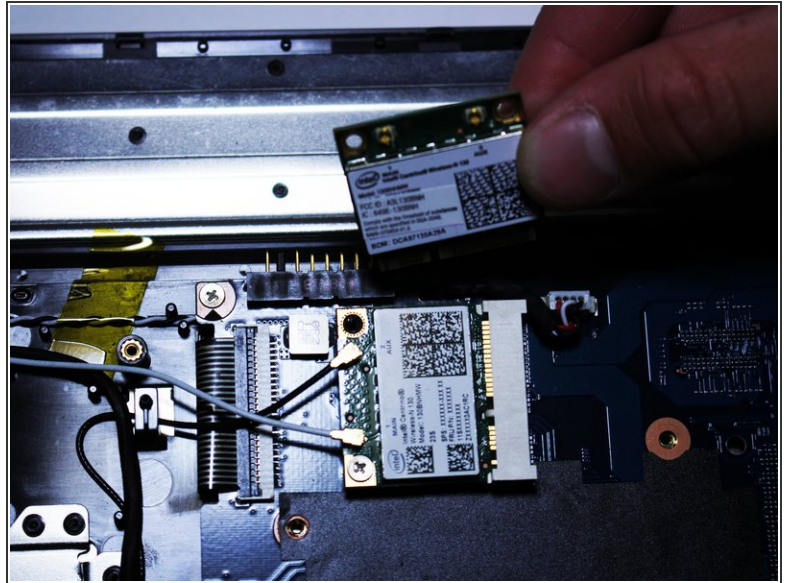
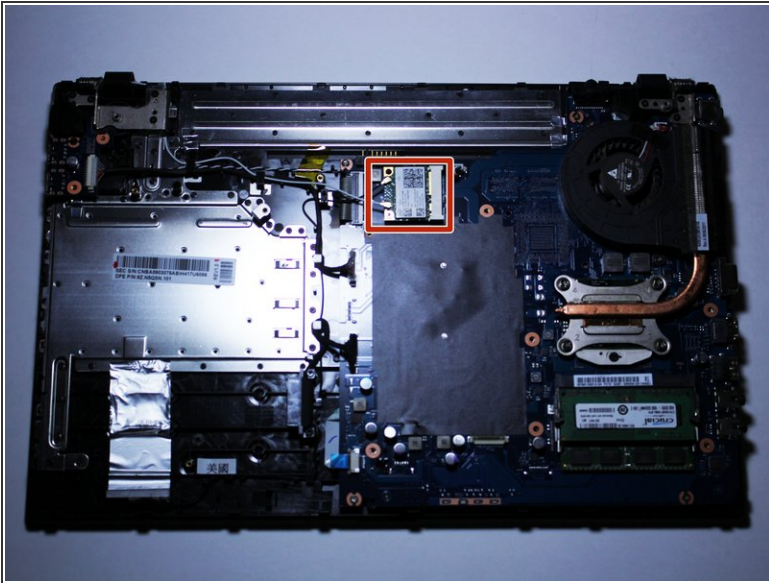
- Make your way towards the front of the computer as well.

Step 19



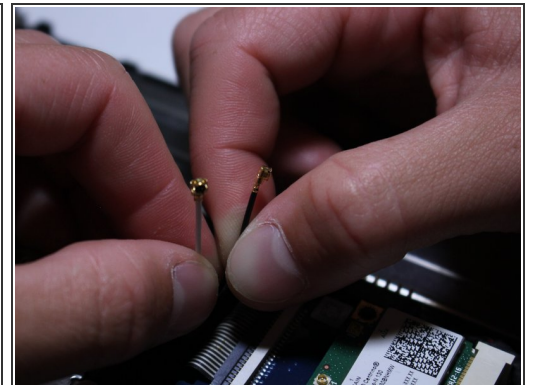
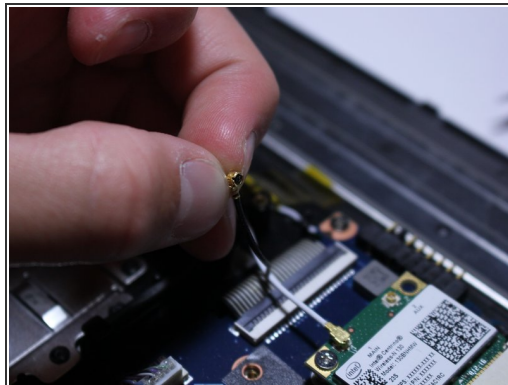
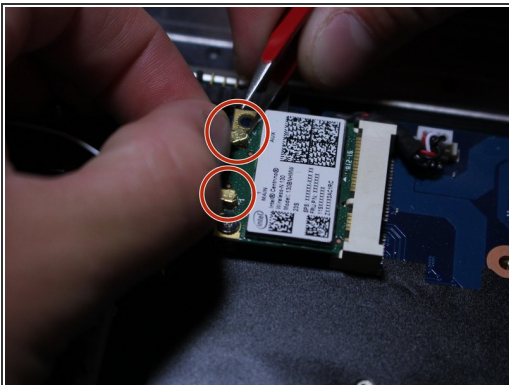
- Work around the edges until you can separate the parts completely.

Step 20



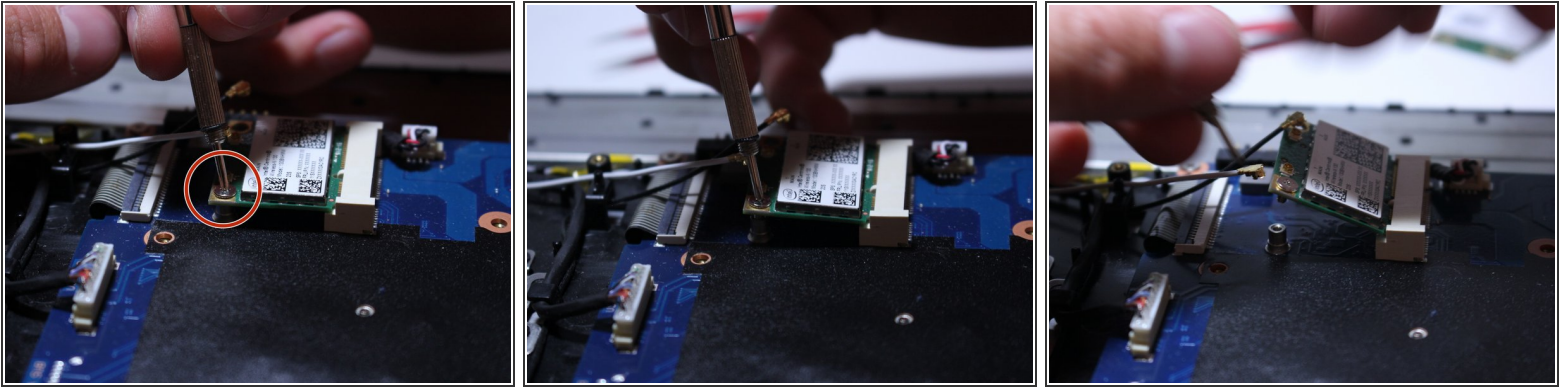
- Locate the Wi-Fi card.
- i* Double check that the Wi-Fi card you bought is the same as the one in your computer now.
- i* Make sure the model numbers match.

Step 21



- Use the tips of your fingernails and the assistance of your tweezers to remove the snap-on cables from the Wi-Fi card.
- !** MAKE SURE YOU REPLACE THE CABLES EXACTLY AS YOU FOUND THEM.

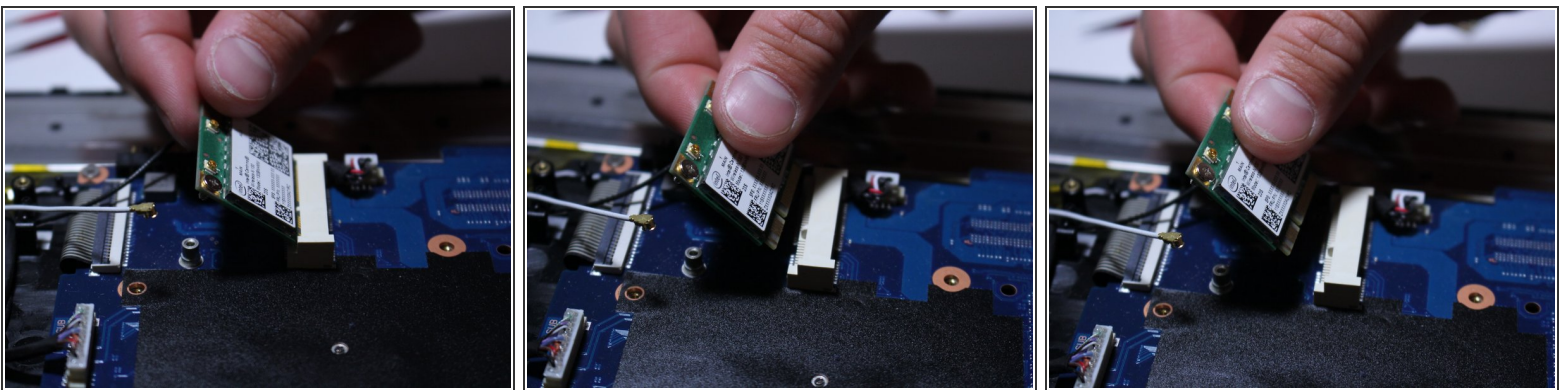
Step 22



- There is only 1 screw holding the Wi-Fi card in place.
- Remove this 4.5mm screw with your screwdriver.

i It is completely normal that the Wi-Fi card springs up after you remove the screw, its supposed to do this.

Step 23



- Now grab the Wi-Fi card and slowly pull it up and outward as shown in the photos.

Step 24



- Insert your new Wi-Fi card and screw it into place with your screwdriver.

⚠ MAKE SURE TO REPLACE THE CABLES EXACTLY AS THEY WERE POSITIONED ORIGINALLY.

To reassemble your device, follow these instructions in reverse order. Getting the plastic shell to snap back over the back of the motherboard may take some time to get it on correctly. Start at one side of the laptop and work your way to the other.