



# How to Replace the Windshield Wiper Blade for Honda Spike 2006

This guide will take you through the steps to replacing the 2006 Honda Spike's windshield wiper blade.

Written By: Yota Higuchi



---

## INTRODUCTION

Replacing the windshield wiper blade is a simple repair.



### PARTS:

- [Honda Spike Windshield Wiper Blade](#) (1)
-

## Step 1 — Lift the Wiper Arm



- Grab the windshield wiper at the base and lift in a counter-clockwise motion around the hinge, lifting the blade from the window.

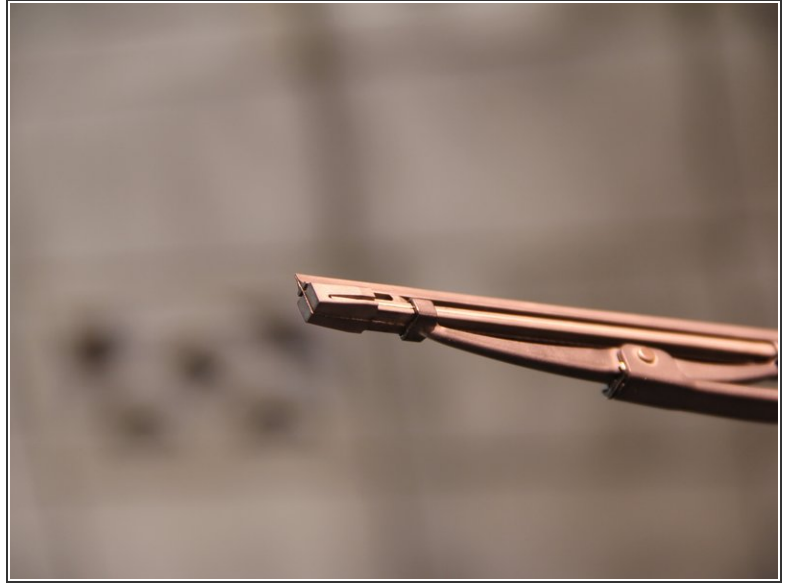
## Step 2 — Rotate the Blade Assembly



- Rotate the wiper blade assembly so the replaceable blade faces outward.

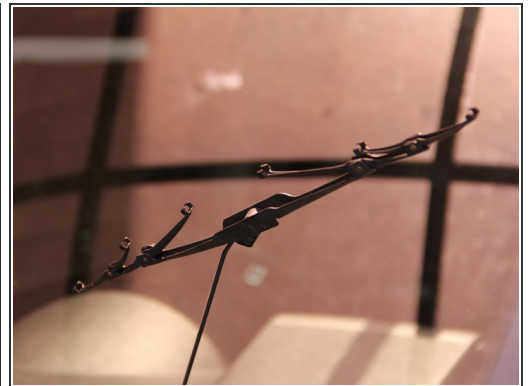
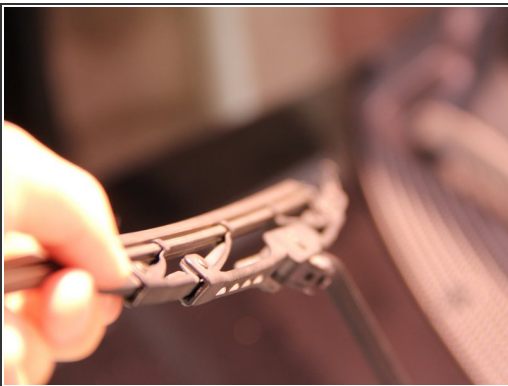


### Step 3 — Remove the Retaining Clasp



- Remove the retaining clasp on the right edge of the blade.
- ⓘ The clasp is always on the rightmost edge of each blade.

### Step 4 — Removing the Wiper Blade



- After removing the clasp, pull the blade from the wiper arm.

## Step 5 — Insert the Wiper Blade



- Insert the new blade by sliding it back into the slots on the wiper arm.

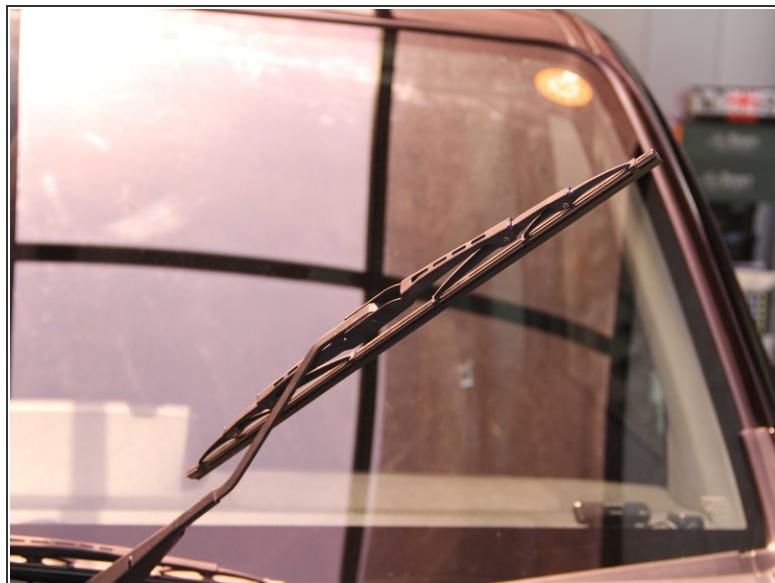
## Step 6 — Reattach the Retaining Clip



- Reattach the clasp by sliding it back over the edge of the wiper blade.



## Step 7 — Rotate the Wiper Blade



- Return the windshield wiper blade back to its original orientation.

## Step 8 — Lower the Wiper Arm



- Rotate the wiper arm clockwise around the hinge until it rests on the windshield.