



# How to Turn on a MacBook Air With a Broken Power Switch

Water damaged MacBooks usually fail to switch on and we switch them on from the power pads on the logic board. What if the power pads switch on fail?

Written By: Mohamed Helmy



## INTRODUCTION

After water damage, the on-off button of the MacBooks is usually damaged as it is part of the keyboard. The MacBook is generally in working conditions, but it is not possible to switch it on using the on-off button.

To switch the MacBook on, people use the on-pad power switches. However, in some cases, this does not work. Here, I am explaining another method for switching the MacBooks on in this case.

This is through disconnecting the charger and the battery, then connect the battery after few seconds then the charges.



### TOOLS:

- [P5 Pentalobe Screwdriver Retina MacBook Pro and Air](#) (1)
  - [Spudger](#) (1)
-

## Step 1 — How to Turn on a MacBook Air With a Broken Power Switch



- **i** Before proceeding, close your computer and lay it top-side down.
- Remove the following ten screws:
  - Two 8 mm 5-point Pentalobe screws.
  - Eight 2.5 mm 5-point Pentalobe screws.

## Step 2



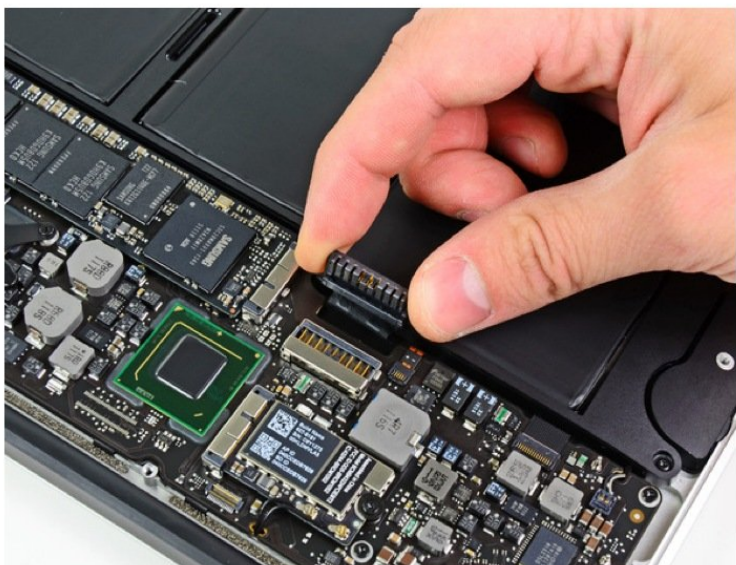
- Wedge your fingers between the display and the lower case and pull upward to pop the lower case off the Air.
- Remove the lower case and set it aside.

### Step 3



- Disconnect the battery. Use your fingers or a plastic tool to disconnect the battery connector.

### Step 4



- Reconnect the battery. Wait for few seconds and reconnect the battery.



## Step 5



- Plug the charger. You should see the cooling fan working, even though the led of the MacBook is closed (a sign that the MacBook is switching on).

To reassemble your device, follow these instructions in reverse order.