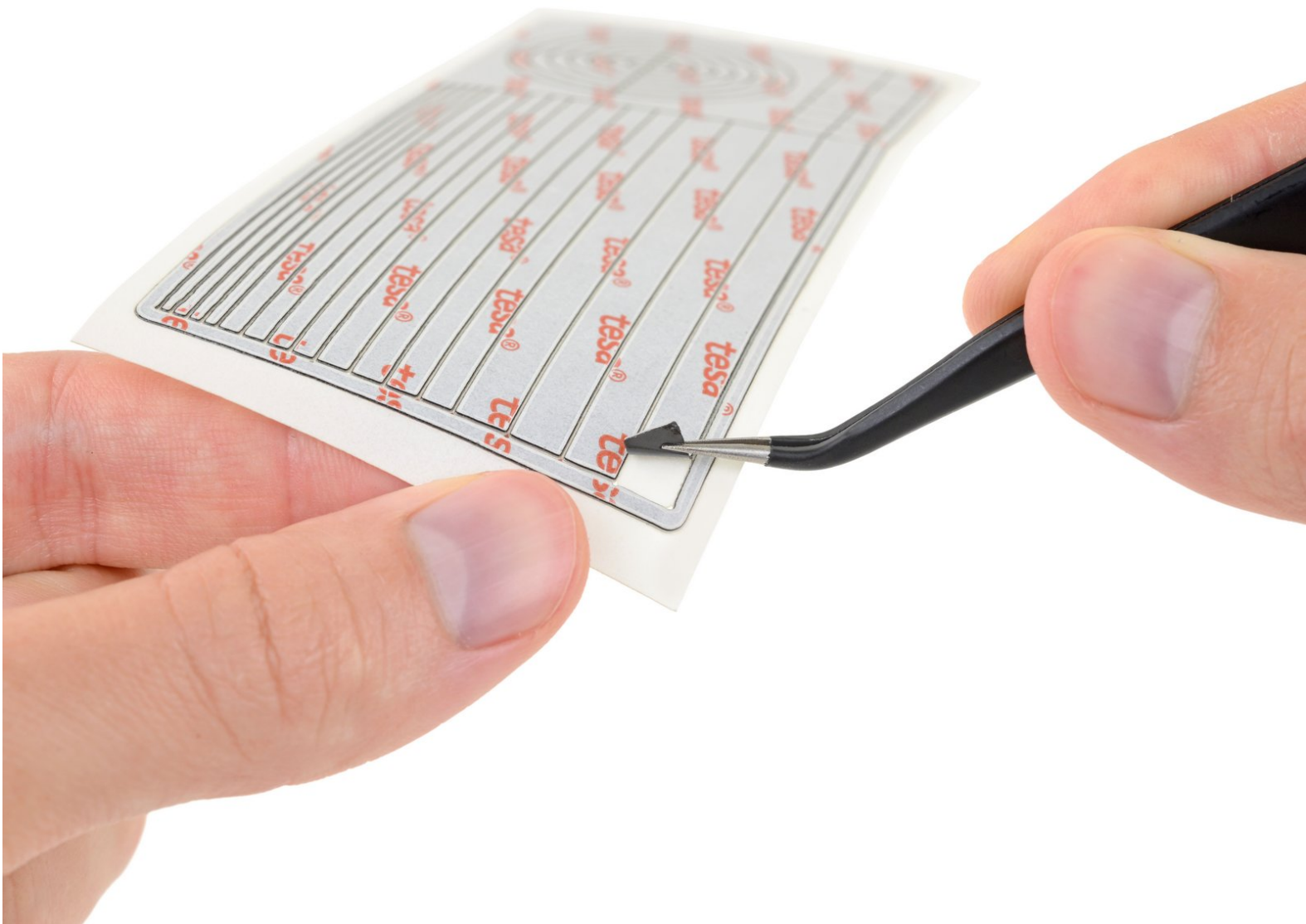




How to Use a Pre-Cut Adhesive Sheet

Use a pre-cut adhesive sheet to replace adhesive during any device repair.

Written By: Adam O'Camb



INTRODUCTION

Many replacement parts don't come with custom-cut adhesive, but do come with a pre-cut adhesive card that has a variety of useful shapes cut into double-sided adhesive. This guide covers some of the most common device repair applications of the pre-cut adhesive card.

Follow the repair guide specific to your phone and part for replacement instructions. This guide only pertains to use of the pre-cut adhesive card included in some replacement kits.



TOOLS:

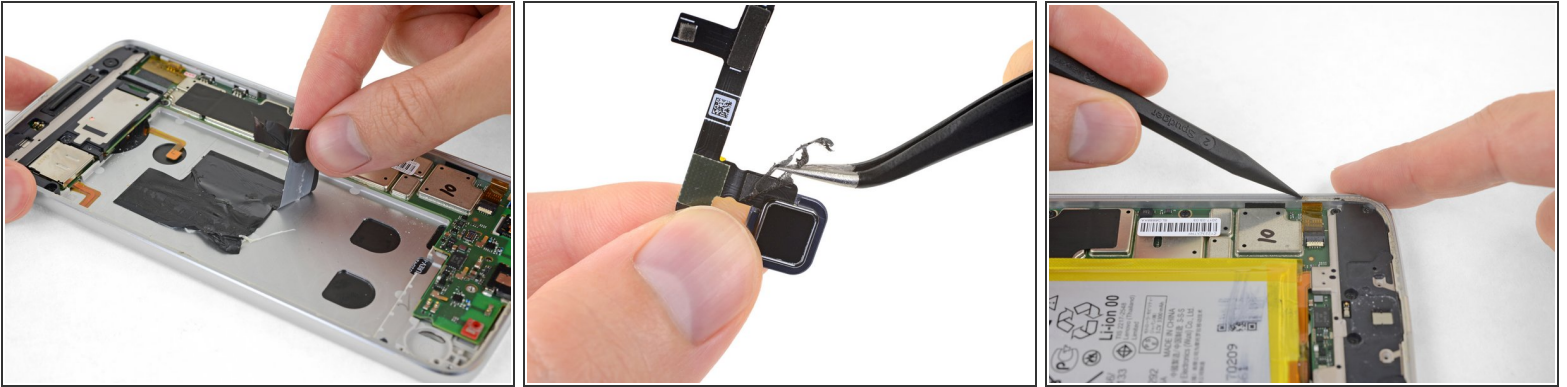
- [Tweezers](#) (1)
- [Spudger](#) (1)
- [Isopropyl Alcohol](#) (1)
- [Coffee Filters or a lint-free cloth](#) (1)



PARTS:

- [Precut Adhesive Card](#) (1)

Step 1 — Surface Preparation



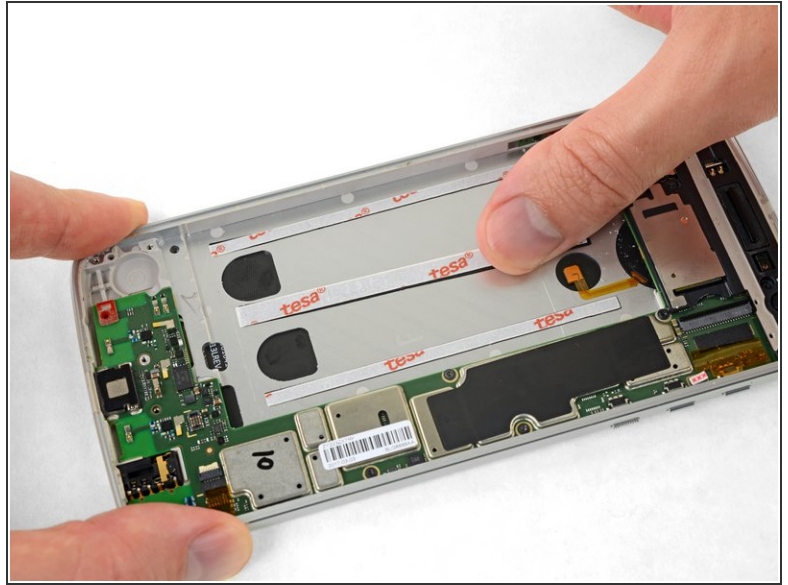
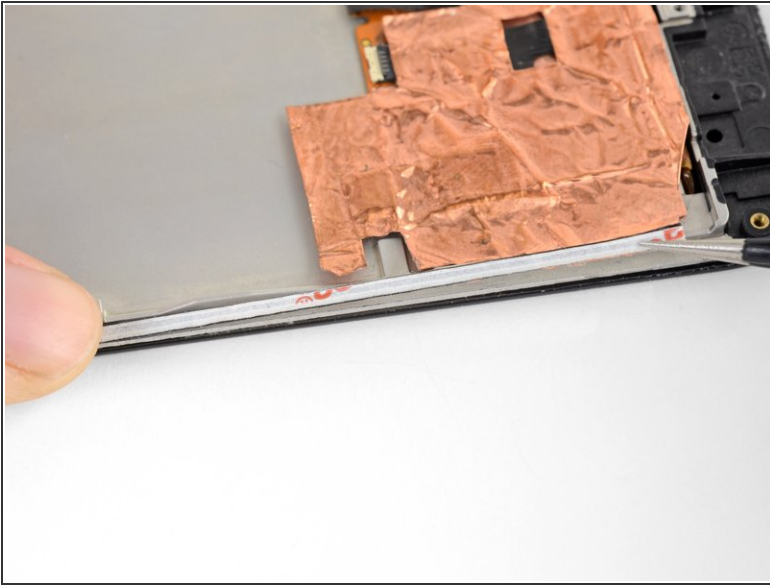
- Begin by removing all the old adhesive, glass, and any other debris from all adhesion surfaces.
 - ⓘ You can pull the adhesive off with tweezers or your fingers, [roll it up on the tip of a spudger](#) with a roll-and-pull motion, or scrape it off with the flat end of a spudger.
 - After removing most of the adhesive, scrape with the tip of a spudger to get small bits of adhesive out of tight spaces.
- ⚠ When working around a battery, be extremely careful not to accidentally puncture or bend the battery.

Step 2



- Using a lint-free cloth (or coffee filter) with a bit of isopropyl alcohol, clean the adhesion surfaces. Use a Q-tip to clean smaller surfaces and corners.
- ⓘ For delicate surfaces that might be damaged by solvents use a 50/50 mix of water and isopropyl alcohol. Don't use any scented cleaners or anything that might leave a residue.
- For best results, swipe your cleaning implement in one direction, not back and forth.
- ⓘ This will help remove any remaining adhesive residue and prep the surface for the new adhesive.
- Wait at least a minute to let the solvent evaporate after cleaning.
- ⓘ The next four steps are example use cases for the pre-cut adhesive card. Evaluate what will work for your repair, and continue from step seven for application and installation.

Step 3 — Rectangular Strips



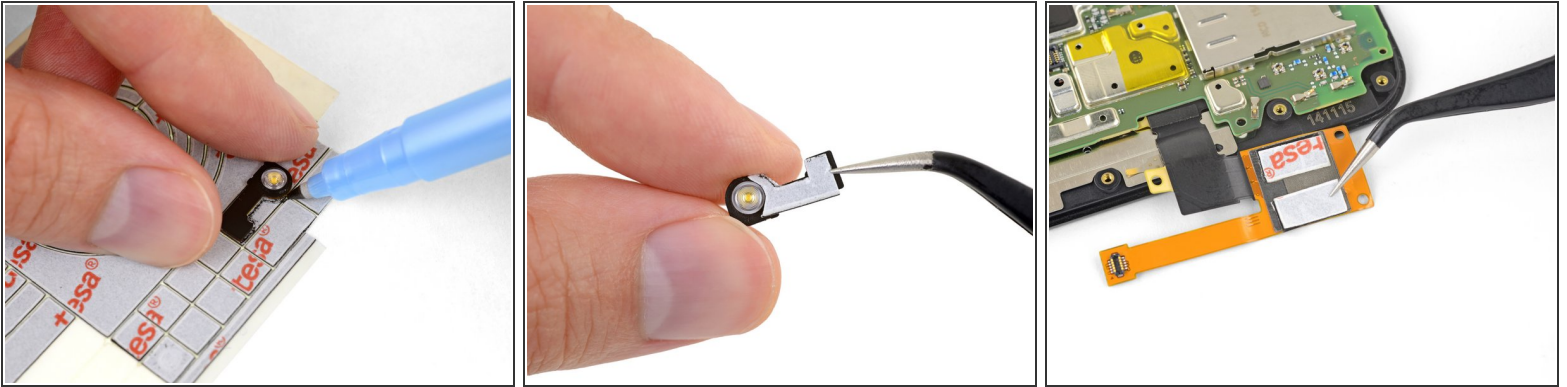
- Use the narrow rectangular strips to secure narrow edges, like those on a display.
- Use multiple long rectangular strips to adhere large components, like batteries.

Step 4 — Card Borders



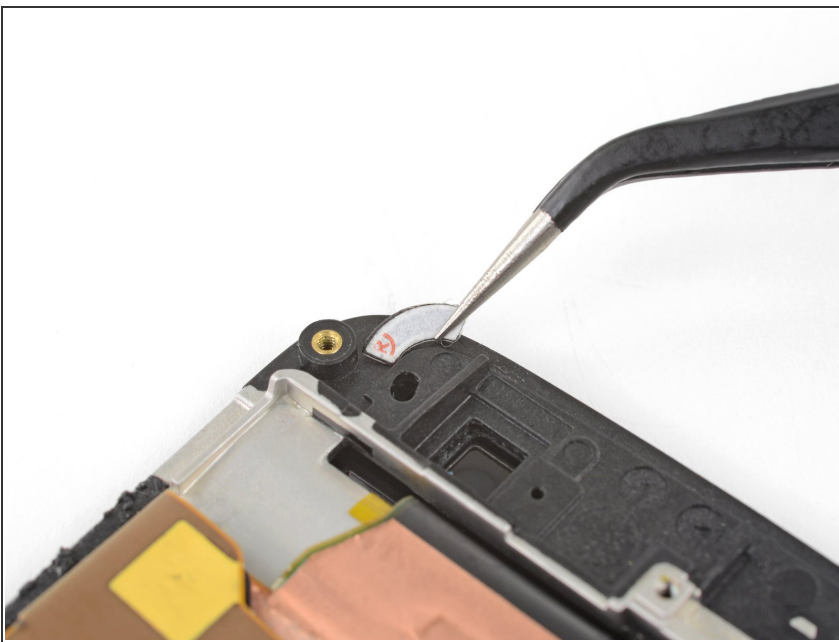
- You can use the thin adhesive border of the card to secure small, rectangular components.

Step 5 — Custom Shapes and Rectangles



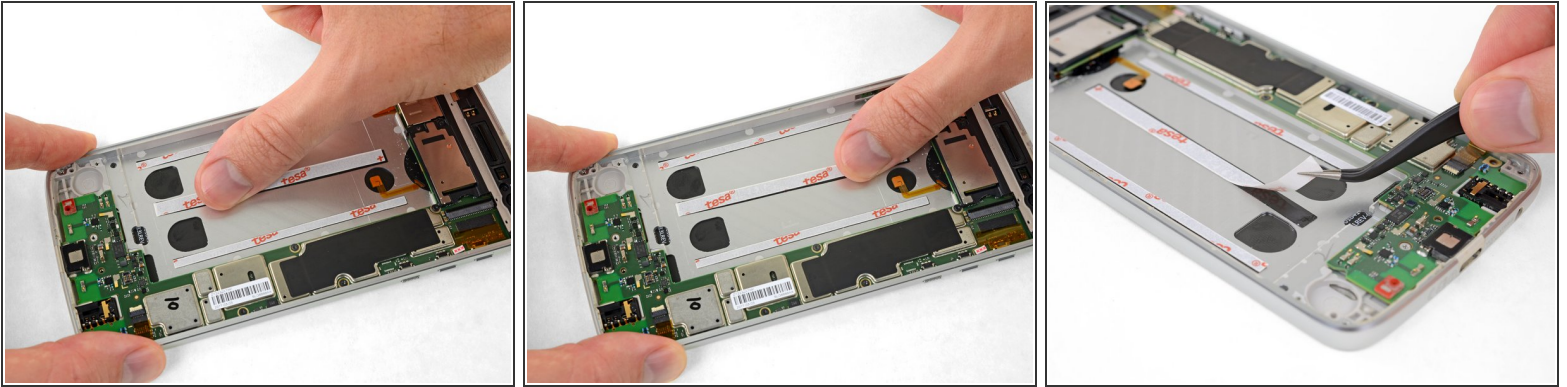
- Use a small rectangle or an uncut part of the card to cut out odd shapes for small components.
- Use an entire rectangle or two for small square or rectangular parts.

Step 6 — Arcs



- Use the arc-shaped cutouts to secure circular components, place adhesive around fragile components that should not be adhered (like an NFC coil) or can tear, or to secure rounded corners.

Step 7 — Application and Installation



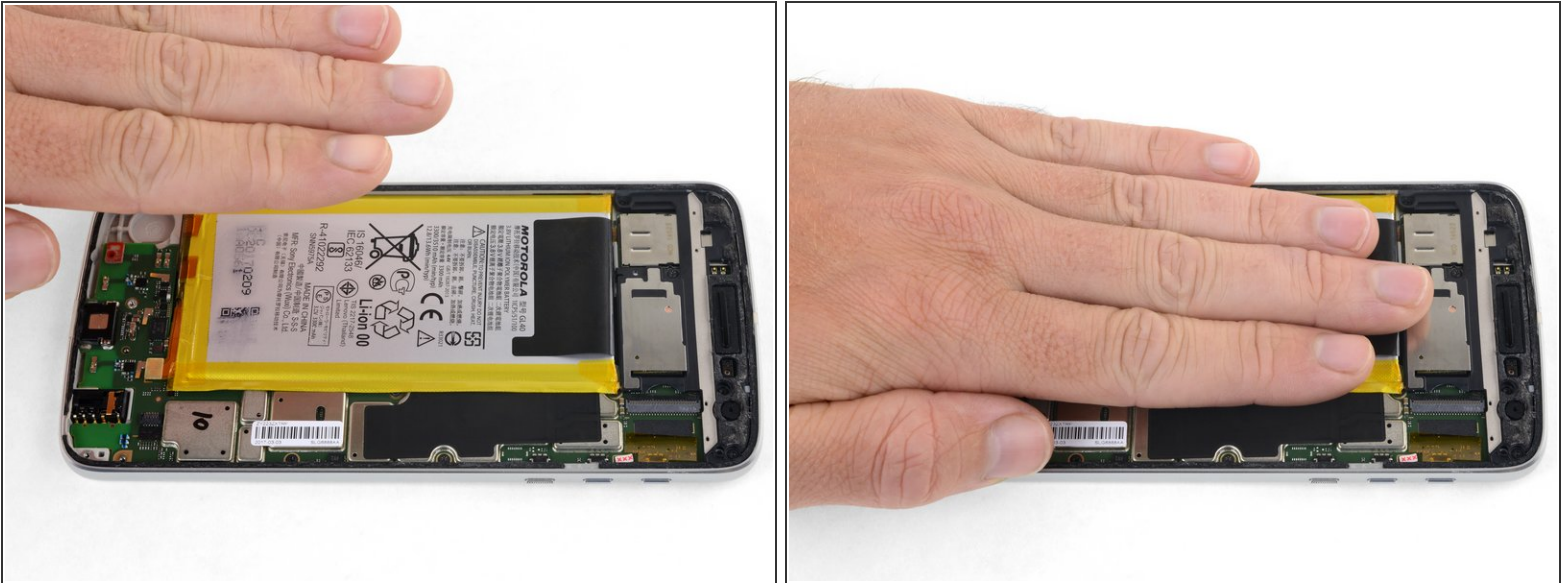
- Before applying any adhesive, make sure your replacement part fits, and that all connectors will connect without putting too much stress on their cables. If it is safe to do so, power on your device and verify that everything functions correctly. If everything works, power off the device and continue.
- ❗ If anything does not function as expected, visit the [Answers Forum](#) for troubleshooting advice.
- With the device powered off, apply the correct adhesive shape for your repair.
 - Avoid applying adhesive over ribbon cables, or delicate surfaces like NFC or wireless charging coils.
 - When applying adhesive strips, make sure to apply one end first, then use a finger or the flat end of a spudger to smooth the rest of the strip as you lay it down, squeezing out any air bubbles.
- Use a pair of tweezers to peel the backing off the adhesive.

Step 8



- Install the new part, taking care to position it correctly.
- For parts with inflexible cables (like some batteries), connect the cable before installing it, and leave it connected during installation, to make sure the part stays positioned correctly.

Step 9



- Apply even pressure over the whole adhesion surface for at least 30 seconds to strengthen the bond.
- For maximum bond strength on external-facing components (like displays and covers), you can leave the adhesive under pressure overnight.
- [Leaving the phone under a stack of books](#) is a good way to do this—just make sure the books apply even pressure to the entire bond. You may need some kind of spacer to allow the books to lay flat.

Follow the guide associated with your device and part to complete your repair.

Take your e-waste to an [R2 or e-Stewards certified recycler](#).

Repair didn't go as planned? Check out our [Answers community](#) for troubleshooting help.