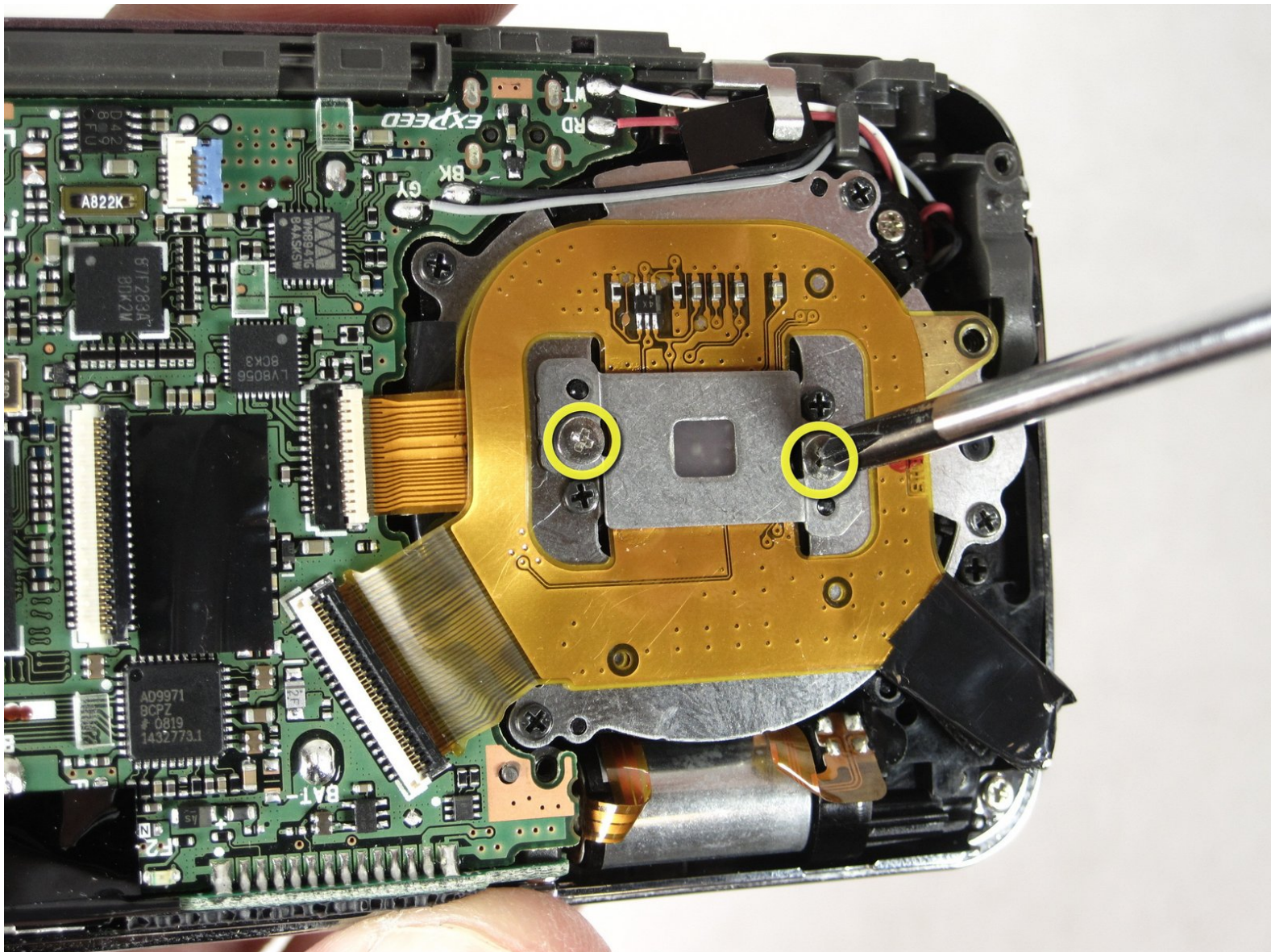




How to access a Nikon Coolpix S210 jammed lens

This guide shows you how to readjust a jammed lens on the Nikon Coolpix S210.

Written By: Mallory Arend



INTRODUCTION

After removing the LCD screen, you will be prompted to remove screws and metal plates within the camera.



TOOLS:

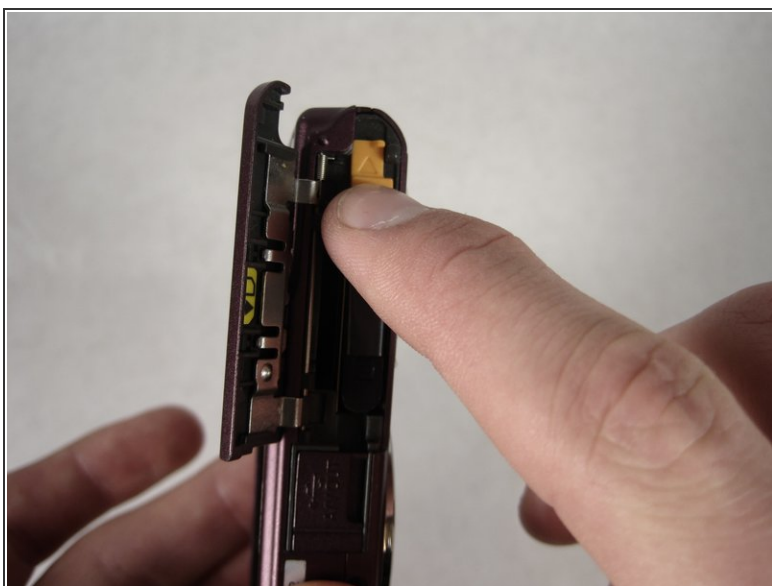
- [Phillips #00 Screwdriver](#) (1)
 - [Spudger](#) (1)
 - [Tweezers](#) (1)
-

Step 1 — Battery



- Place thumb on the battery cover panel on the bottom of the device.
- Slide the panel to the right away from the camera.

Step 2



- Slide the orange latch outward towards the corner of the camera.
- The battery should pop out.
- Remove the battery and reattach the cover.

Step 3 — Back Case



- After removing the battery, unscrew the four 3.10mm screws on the side opposite the buttons.

Step 4



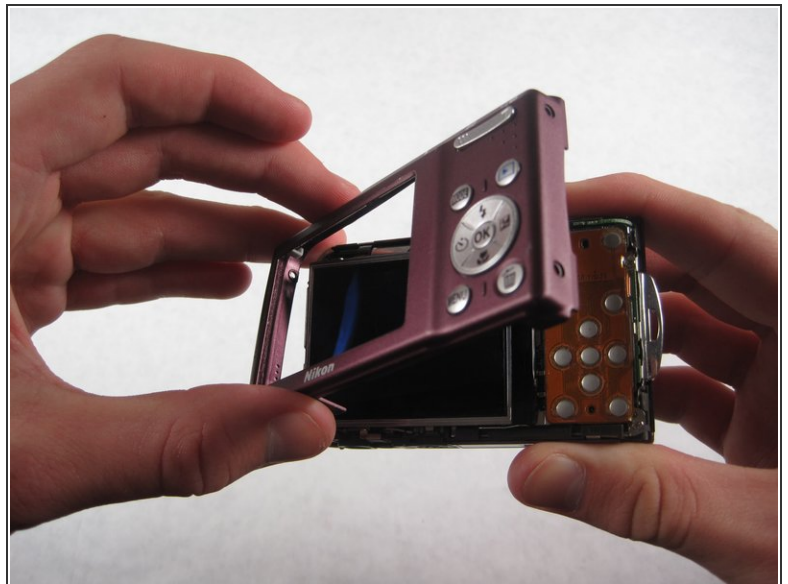
- Unscrew the three 4.05mm screws on the bottom of the camera below the lens.

Step 5



- Unscrew the two 4.05mm screws on the side next to the buttons.

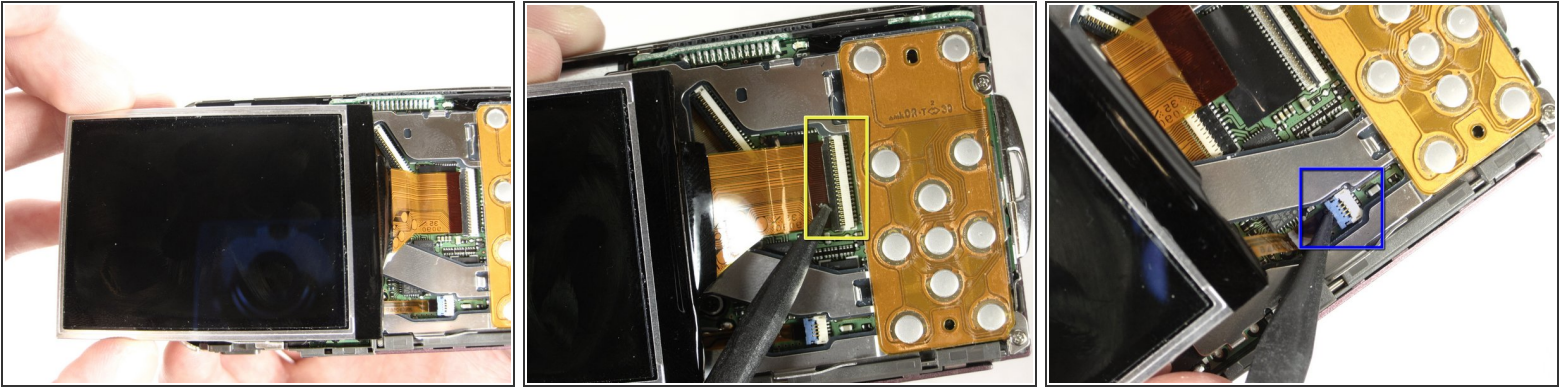
Step 6



- Gently wedge the flat end of the spudger between the back case and the wrist-strap mount.
- ⓘ The wrist-strap mount is the thin metal piece on the side of the camera. Your camera may have the wrist-strap attached, but you will not need to remove it to continue.
- Carefully pry the back case away from the camera and then gently lift it off.

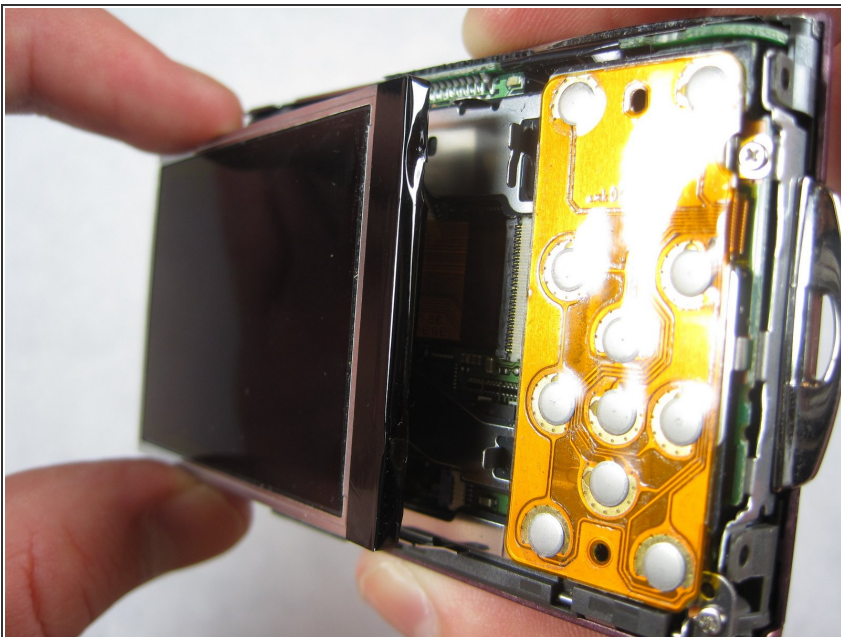
This document was generated on 2019-09-28 10:32:43 AM (MST).

Step 7 — LCD screen



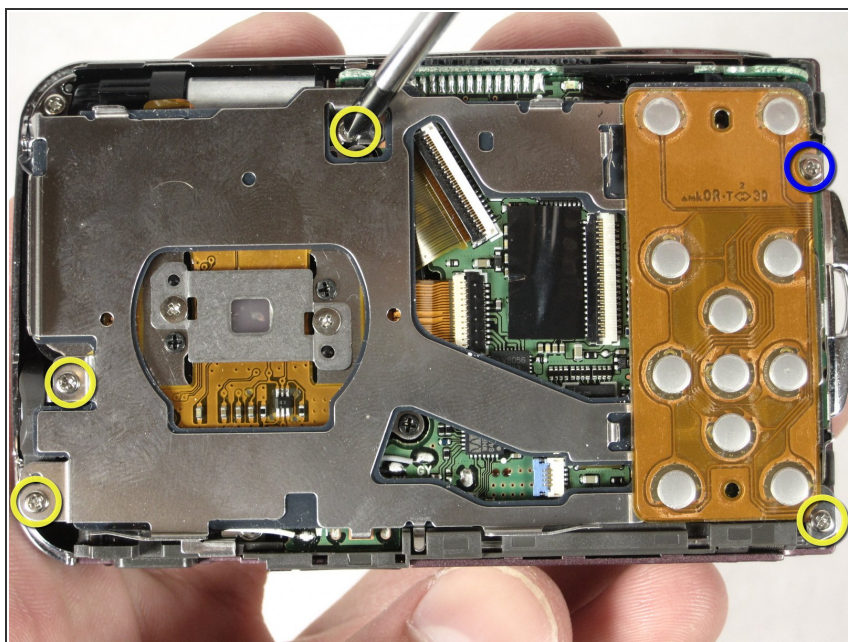
- ✦ Having removed the back case, the LCD screen should be sitting loosely on the camera, attached only by a wide ribbon and a narrow ribbon.
- i The ribbons are connected to and held in place by small plastic latches.
 - To remove the wide ribbon, gently pry the spudger underneath the black plastic latch where the ribbon connects and lift up. The ribbon should slide out easily.
 - Repeat the same process with the smaller ribbon, this time looking for a light blue latch.

Step 8



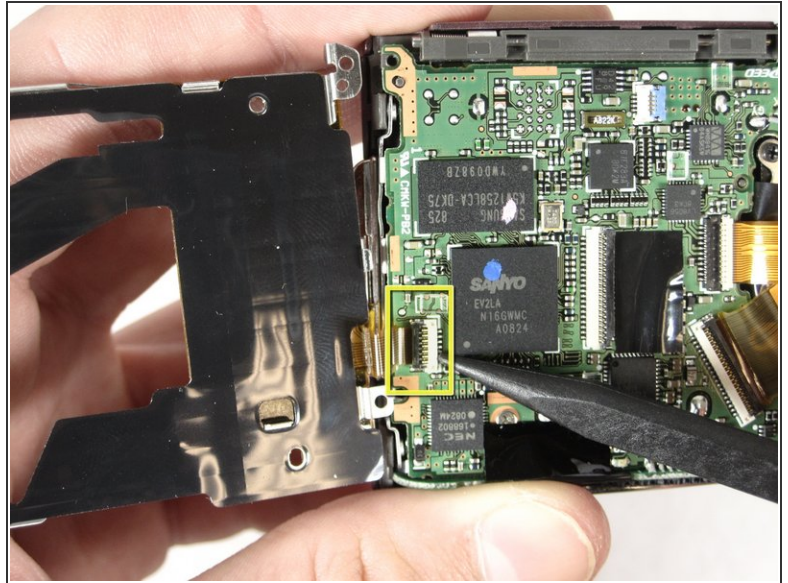
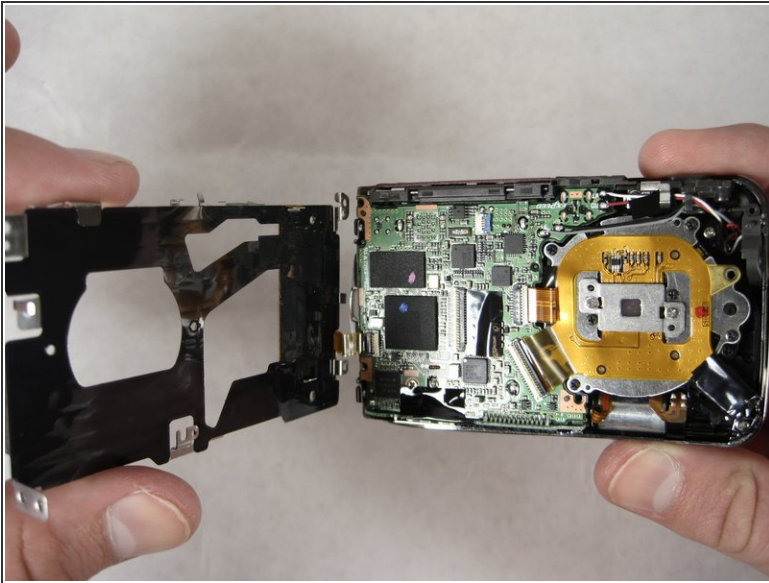
- Gently remove the LCD screen.

Step 9 — Circuit Board Cover



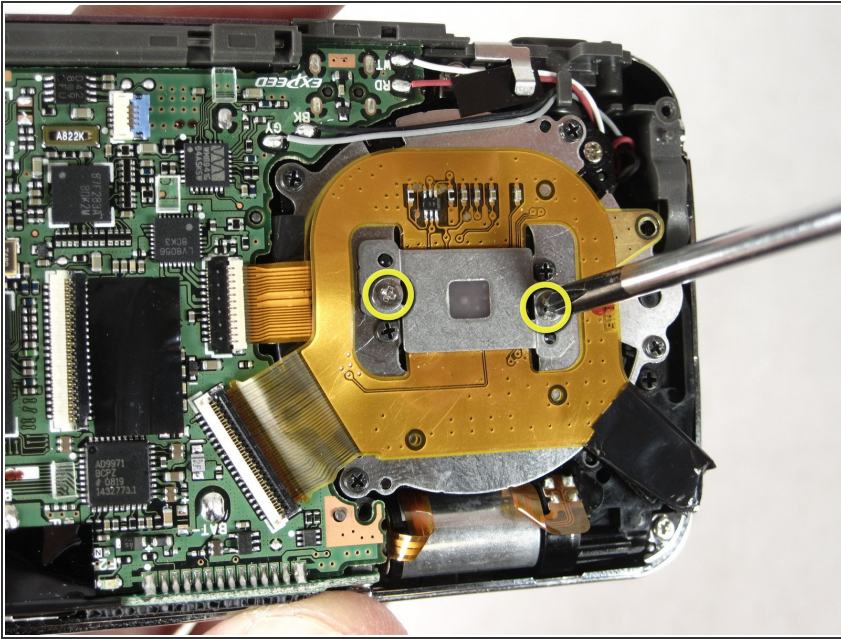
- After removing the LCD screen, unscrew the four 3.8mm screws that hold down the metal plate
- Unscrew the 2.5mm screw next to the wrist-strap mount.

Step 10



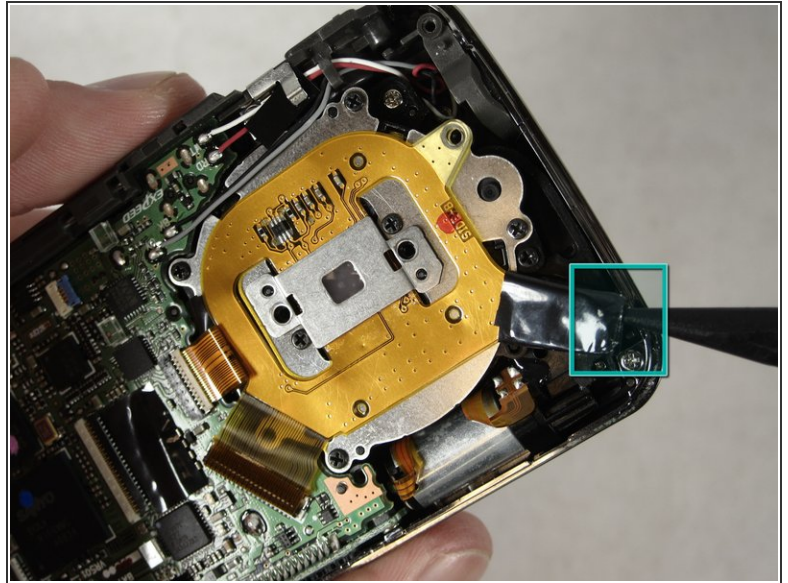
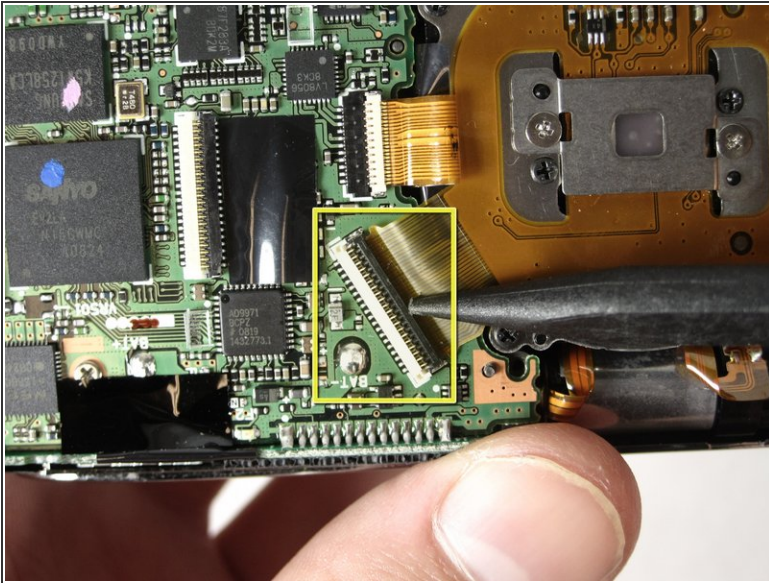
- Position the camera with the lens facing down and the shutter button facing you.
- Lift the metal plate away from the camera without removing it fully. There is a ribbon attaching the edge of the plate to the camera.
- ⓘ The ribbon is being held in place by a black latch.
- Carefully pry the spudger under the black latch and lift gently upward. The ribbon will slide out easily.
- With the ribbon unlatched, the entire metal plate should now be detached.

Step 11 — How to access a Nikon Coolpix S210 jammed lens



- Remove the two silver 3.1mm screws from the silver plate.

Step 12

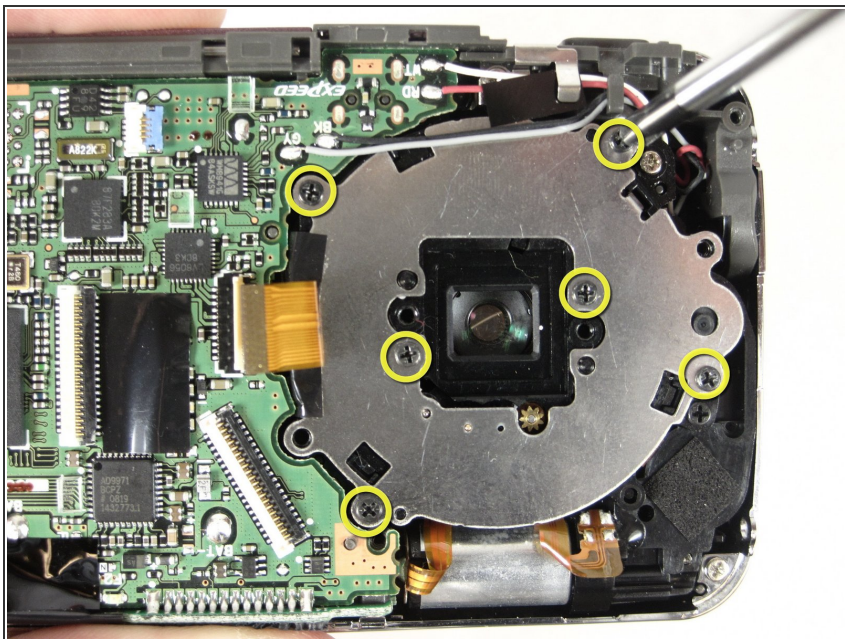


- i** There is a ribbon to the bottom left of the silver plate. It is being held in place by a black latch.

 - Pry the spudger under the black latch and lift gently. The ribbon will release easily.
- i** There is a loop of tape to the bottom right of the silver plate.

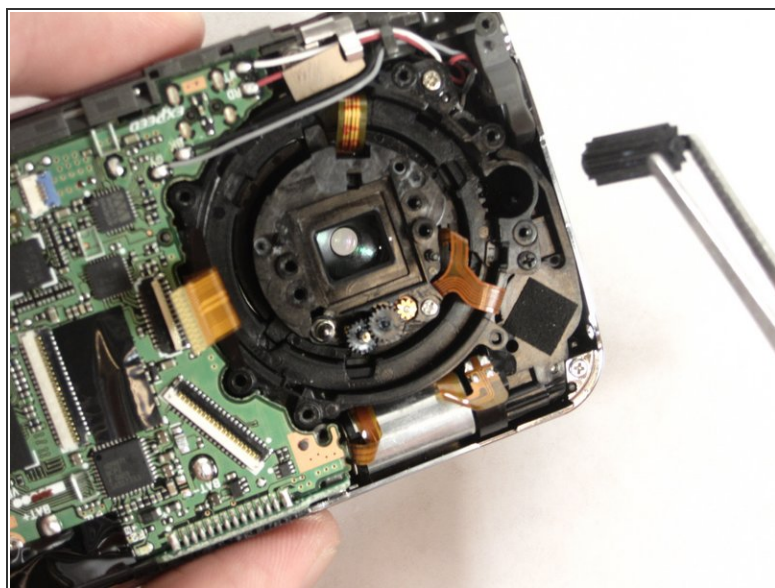
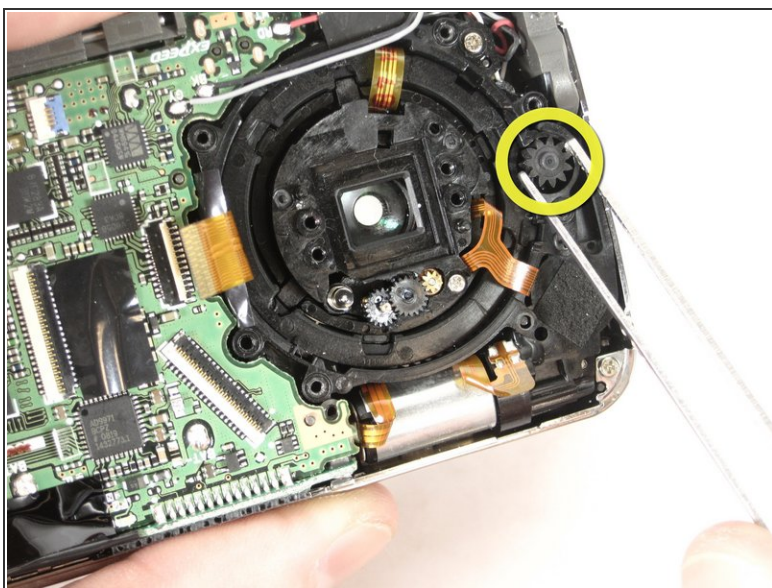
 - Slide the tip of the spudger inside the loop of tape and pry upward while removing the yellow plate with your other hand.

Step 13



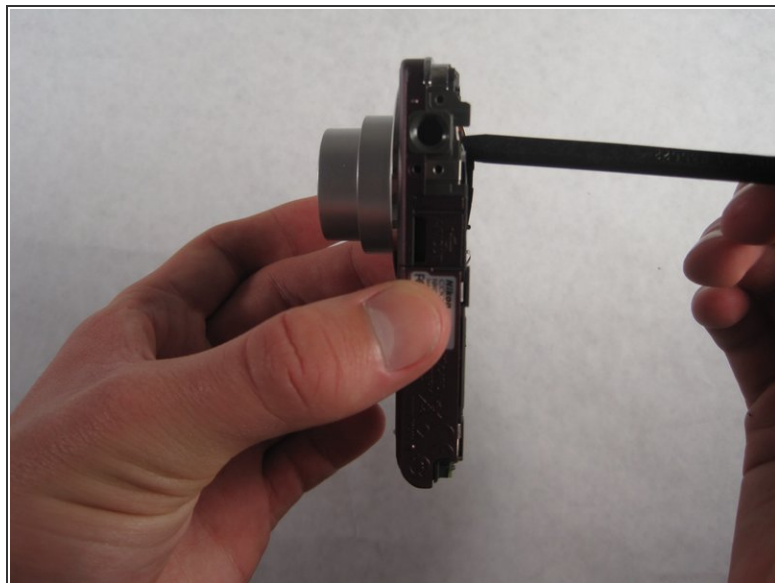
- Remove all six 3.5mm screws from the silver plate.
- Lift up on the silver plate to remove.
- **Note:** When reassembling, pay careful attention to the circled screw locations.

Step 14



- Using tweezers, remove the cylindrical gear from the camera.

Step 15



- Place the spudger on the outermost surface of the lens and push in. This will extend your camera lens.

To reassemble your device, follow these instructions in reverse order, paying careful attention to the locations of the different screws.