



How to apply new adhesive on the Apple Watch Series 1

This guide shows you how to apply new adhesive on the Apple Watch Series 1.

Written By: Tobias Isakeit



INTRODUCTION

Use this guide to apply new adhesive on the Apple Watch Series 1 after opening it up or having the Force Touch Sensor replaced.



TOOLS:

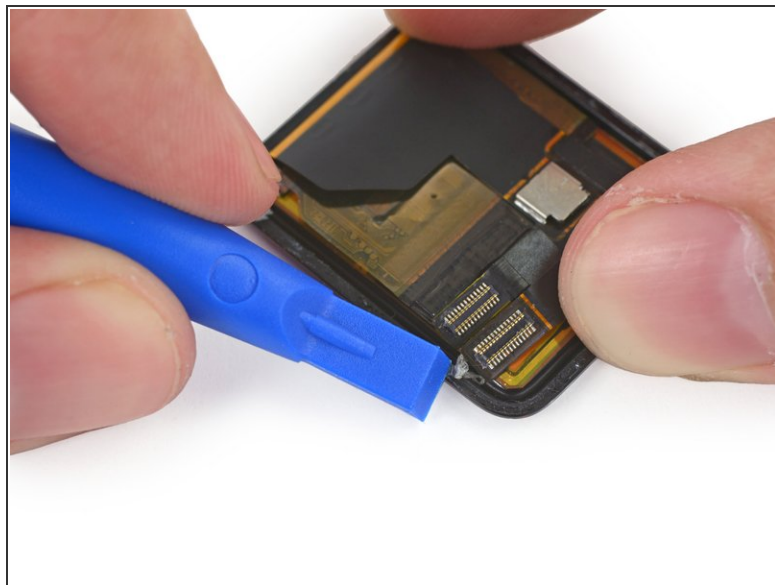
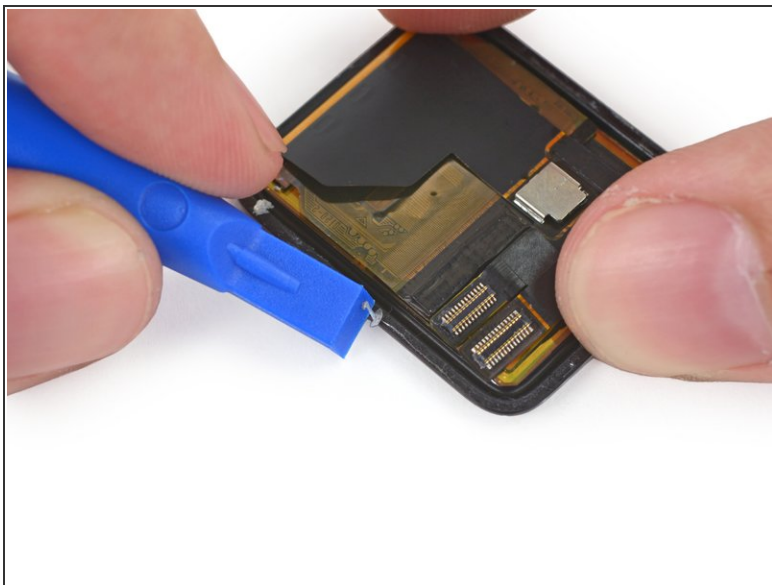
- [Tweezers](#) (1)
- [iFixit Opening Tools](#) (1)



PARTS:

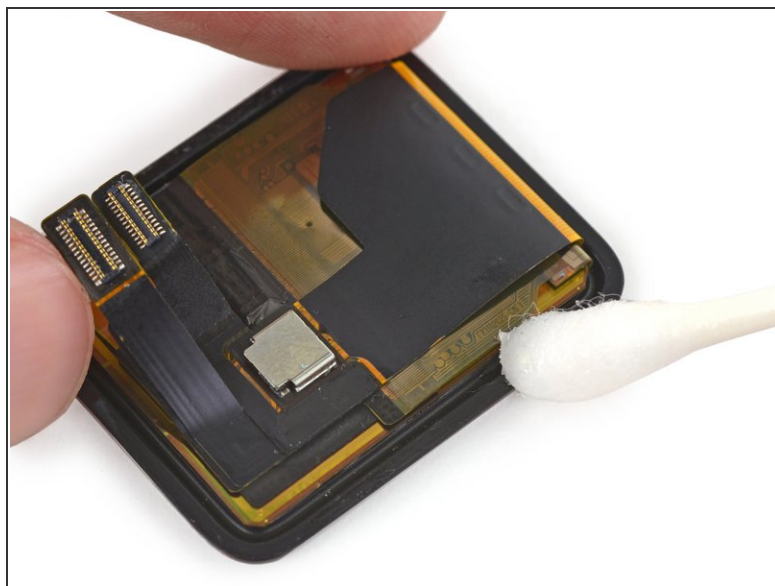
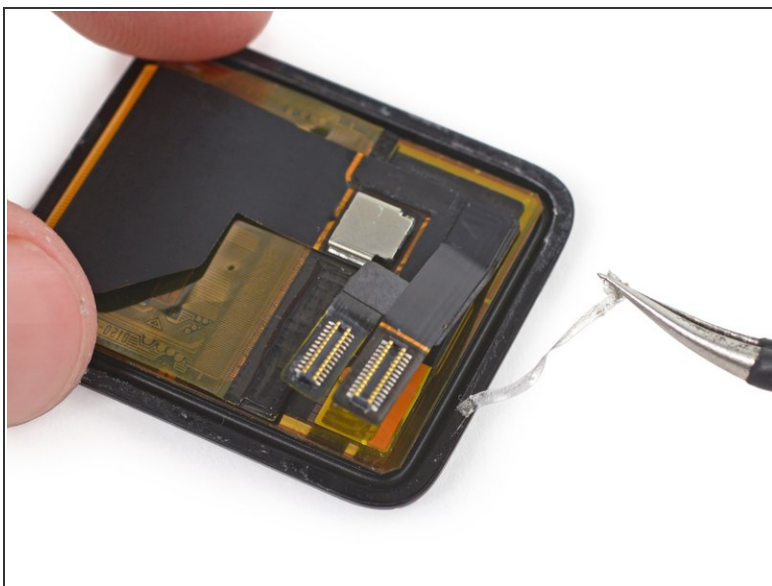
- [Apple Watch \(42 mm\) Adhesive Strips](#) (1)
- [Apple Watch \(38 mm\) Adhesive Strips](#) (1)

Step 1 — Adhesive



- Use a plastic opening tool to scrape adhesive off the back of the screen.

Step 2



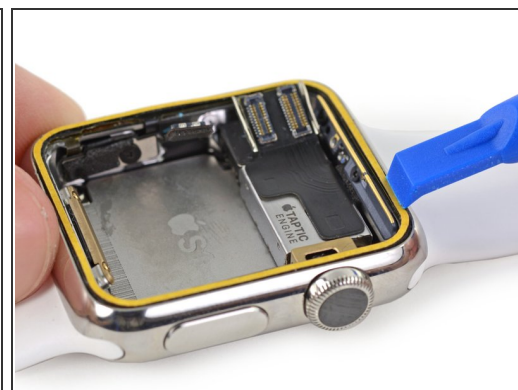
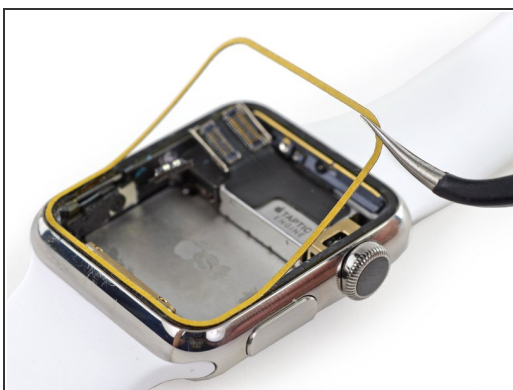
- You may be able to peel up the adhesive with tweezers.
- ❗ Once you have all of the pieces of adhesive removed, you may want to use an alcohol soaked q-tip to clean any residue off the back of the screen.

Step 3



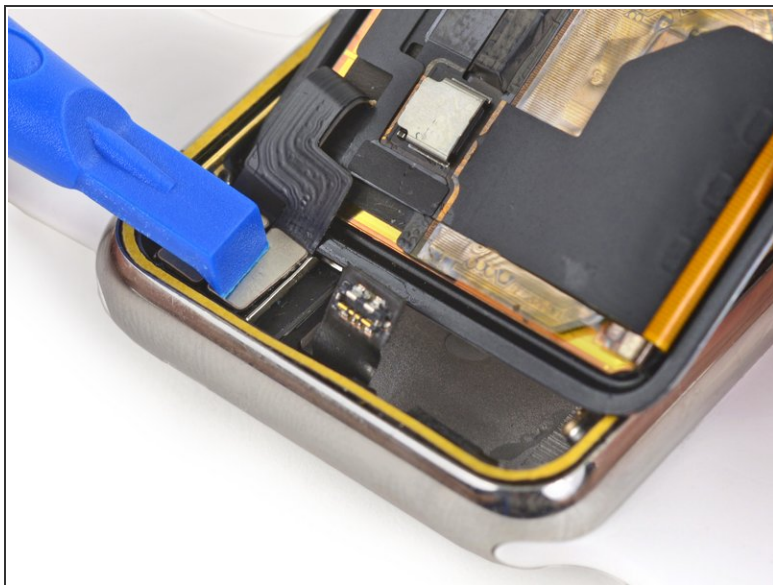
- Use tweezers to peel the outer ring off of one of the adhesive strip pads.
- Be sure to get both the double-sided adhesive and the brown backing paper.
- ⓘ Be very careful not to fold, bend, or stretch the adhesive tape, as this will make it too thick to seal the screen without a ridge between the screen and the case.

Step 4



- Lay the backed adhesive tape down on the Force Touch sensor, around the edge of the case where the screen rests.
- Start in a corner with the tape as close to the corner wall as possible.
- Press on the brown backing paper with a plastic opening tool to secure the adhesive around the entire perimeter.

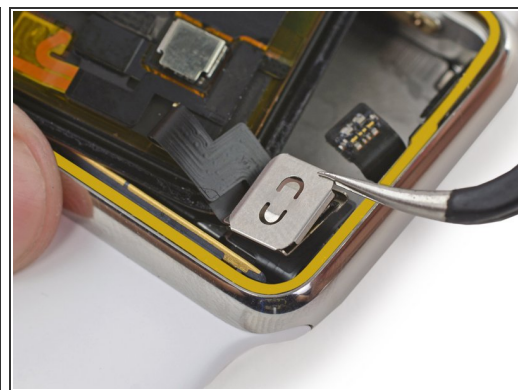
Step 5



- Use a plastic opening tool to reconnect the display data and digitizer cable connectors.

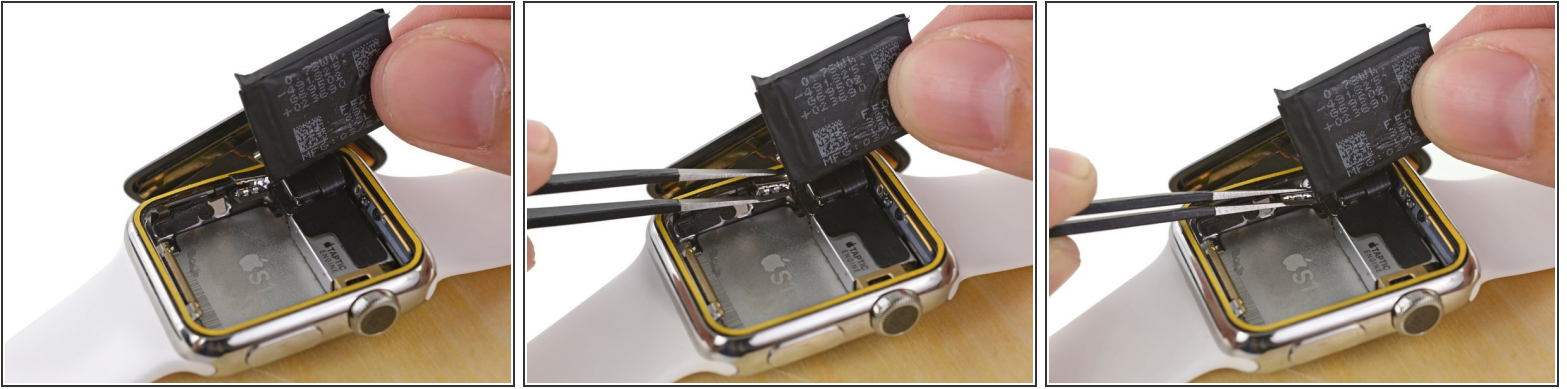
⚠ Be careful not to touch any of the contacts directly, as your finger oils may impede connectivity.

Step 6



- To reinstall the metal bracket, line up the single tab with the slot in the top of the lower half, and slide the bracket down.
- Snap the upper bracket in place.

Step 7



- Line the battery connector up with its mate on the cable inside the watch body.
- Use tweezers to press the two connectors together.

Step 8



- ⓘ If your replacement battery came with pre-installed adhesive, peel off the protective tab now, exposing the adhesive.
- Rotate the battery down into its slot, and press it into position.
- Press the battery down against the S1 to re-adhere it in place.
- ⓘ Now is the best time to test powering on your watch—if it doesn't turn on, double check all three connectors and try again.

Step 9



- Use tweezers to peel off the adhesive backing strip.
- Peel the backing strip up halfway, then snip it with scissors so you can peel the rest off without it snagging on the display.

Step 10



- Move the screen back to the right, folding the display data and digitizer cables neatly.
- Center the screen over the case and press it down firmly onto the adhesive.