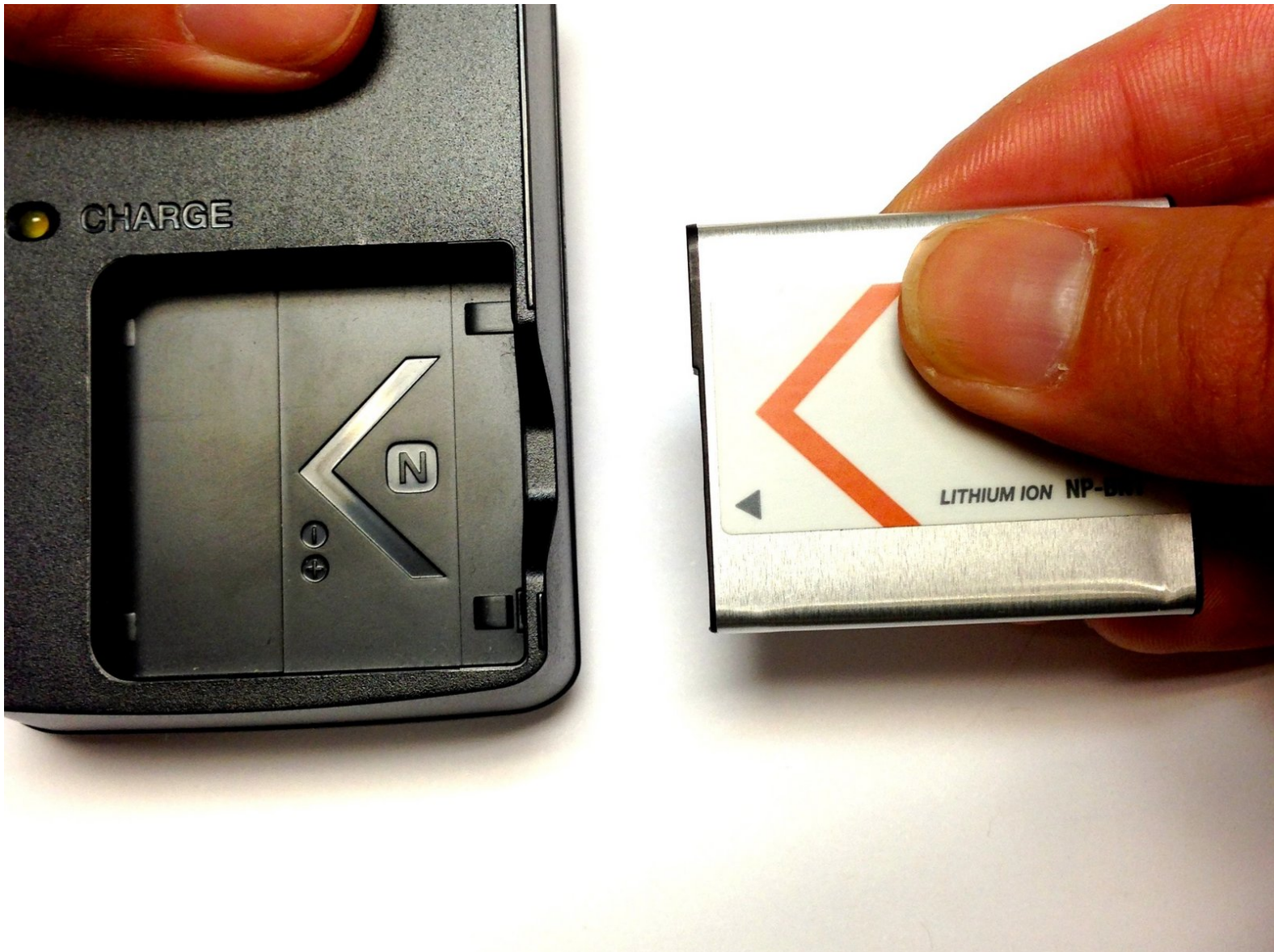




How to charge Canon PowerShot A4000 IS battery

How to charge your Canon PowerShot A4000 battery and reinsert it into your camera.

Written By: Ansley Gardner





PARTS:

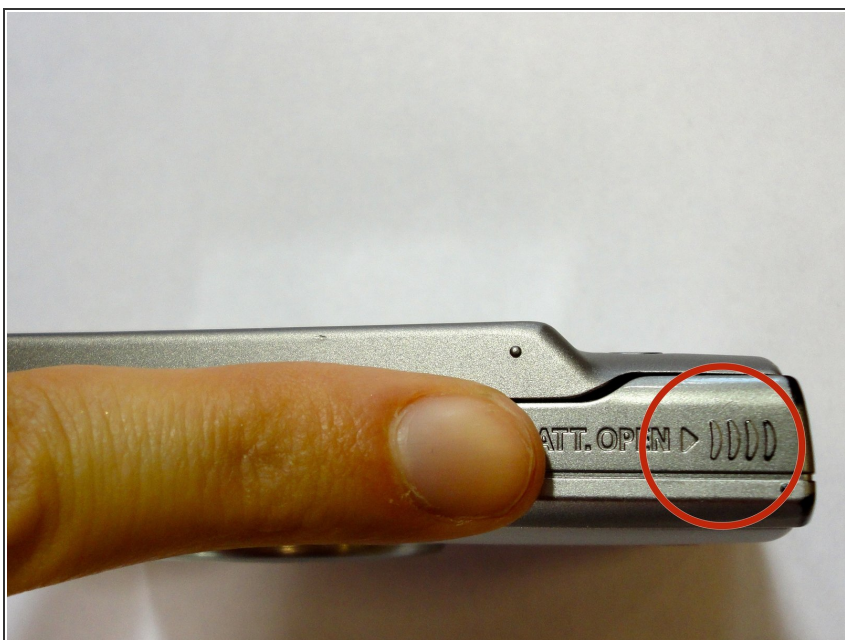
- [Canon PowerShot A4000 Camera Charger](#) (1)
-

Step 1 — Opening the Battery Compartment



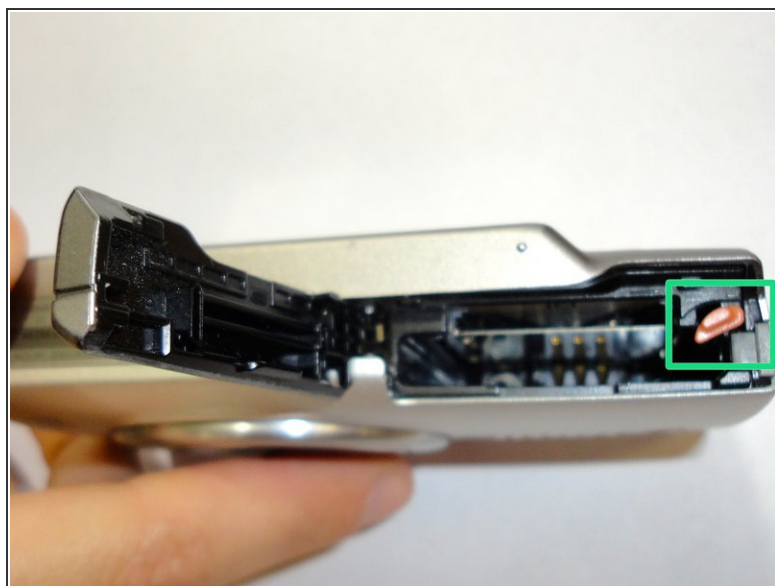
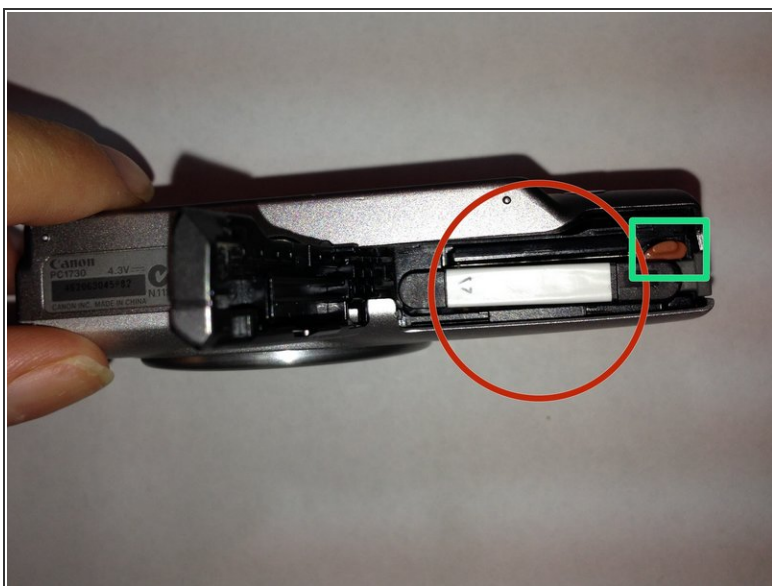
- The area highlighted in red is the door to the battery compartment. It is identified by the label CARD/BATT.OPEN and an arrow pointing outwards from the camera. This is showing the direction you are going to push to open the compartment.

Step 2



- Using your finger, apply pressure to the grooves at the top right corner of the camera that is highlighted in red. Slide the door to the battery compartment open.

Step 3 — Inside The Battery Compartment



- This is the open battery compartment. The battery has an arrow on it pointing in the direction the battery needs to be oriented in the camera.
- The green box is highlighting the switch used to remove the battery. Using your finger, press the red switch backwards, away from the lens, and the battery will be released.

Step 4 — Charging the Battery



- Use the [Battery Removal](#) guide to remove your camera battery. Once the battery is removed, insert it into the charger that came with your PowerShot A4000 camera.
- Make sure the arrows on the charger and camera match up or the battery will not charge properly.
- Once the battery is inserted into the charger, it is ready to be plugged into an outlet.
- A yellow light will come on once the battery begins charging. The light will turn green when the battery is fully charged.

Step 5 — Reinserting the Battery



- Once the battery is fully charged, use the guide on removing your camera battery found here: [Battery Removal](#), in reverse, to reinsert your battery.
- Make sure to line up the battery with the arrow side facing toward the lens side of the camera. When you press the battery down, the red switch should click back into place automatically, holding the battery in place.

To reassemble your device, follow these instructions in reverse order.