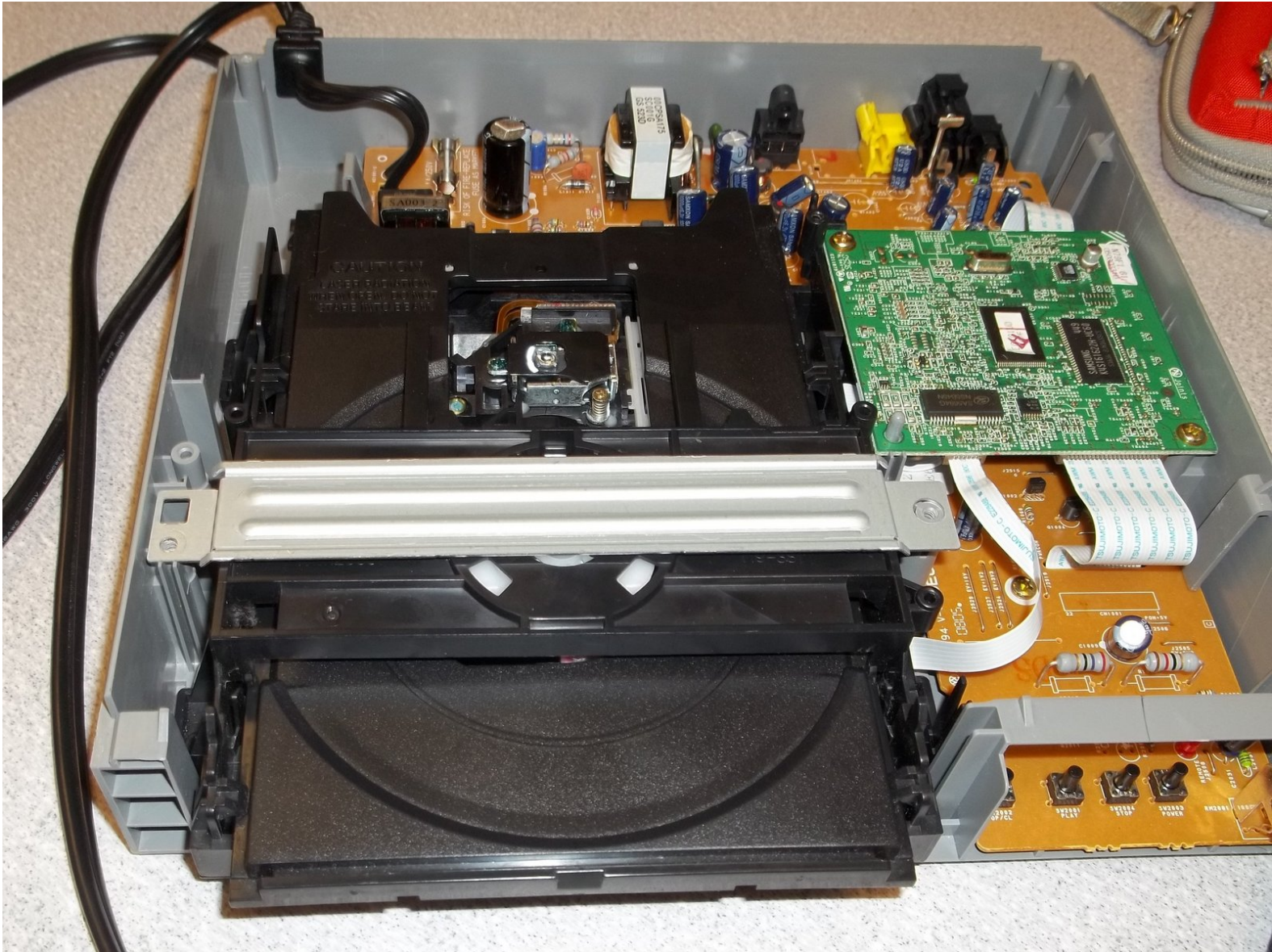




How to check Magnavox MWD200F fuses

Written By: Taryn





TOOLS:

- [Tweezers](#) (1)
-

Step 1 — How to remove Magnavox MWD200F cover



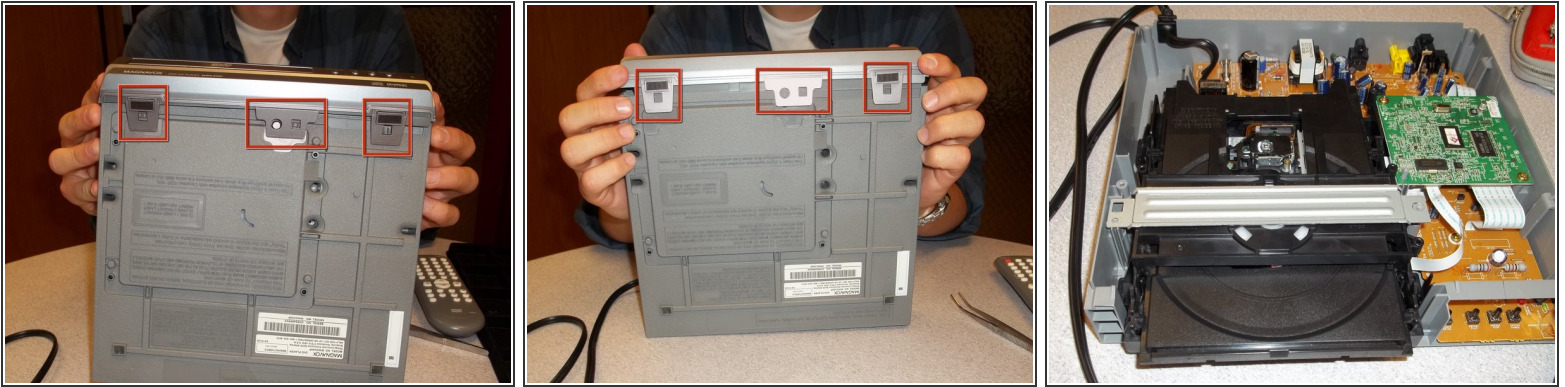
- Using a Philips screwdriver, remove the two screws on the top of the device, towards the back.

Step 2



- Remove the plastic cover by pulling up on the back and away from the faceplate.

Step 3



- Remove the faceplate by unclipping the latches on the bottom of the device.
- Once it's unlatched, pull the faceplate off.

Step 4 — How to check Magnavox MWD200F fuses



- Now that the device is open, you can check for any blown fuses that may need to be replaced.

To reassemble your device, follow these instructions in reverse order.