



# How to clean and reapply thermal paste on ATI Radeon X1900 XTX

The radeon X1900 XTX will build up dust over time. If you want to restore it to it's original working state, you should use this guide to clean all of the dust out of it.

Written By: Chris Green



---

## INTRODUCTION

Like all graphics cards, the Radeon X1900 XTX occasionally needs to be opened up and cleaned in order to function properly.

Once you remove the heat sink, you'll need to reapply thermal paste to the GPU die. Follow our [Applying Thermal Paste Guide](#) for detailed directions.

---

## TOOLS:

- [Q-Tips](#) (1)
  - [Phillips #0 Screwdriver](#) (1)
  - [Arctic Silver Thermal Paste](#) (1)
  - [Arctic Silver ArctiClean](#) (1)
-

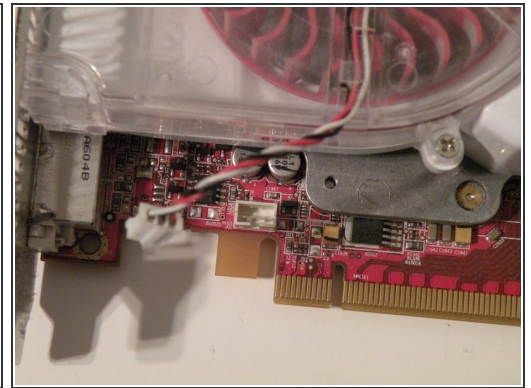
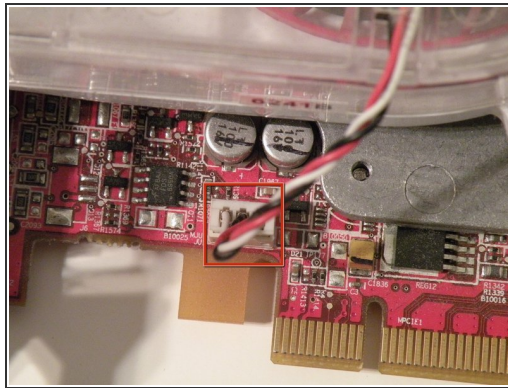
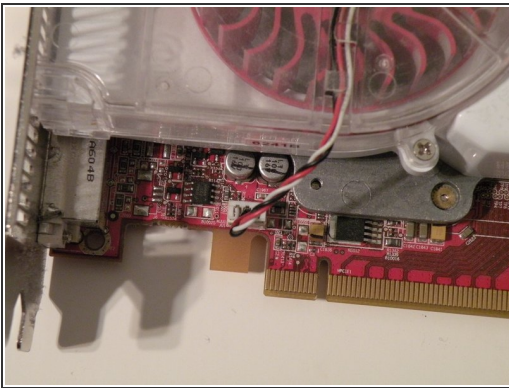


## Step 1 — How to clean and reapply thermal paste on ATI Radeon X1900 XTX



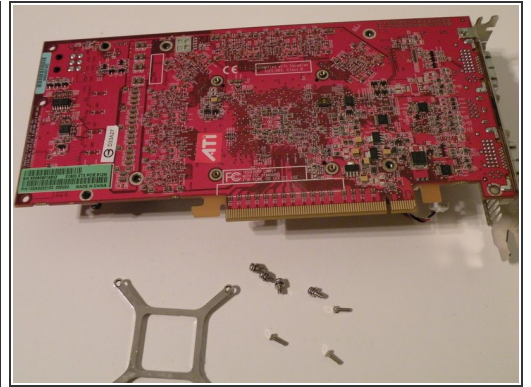
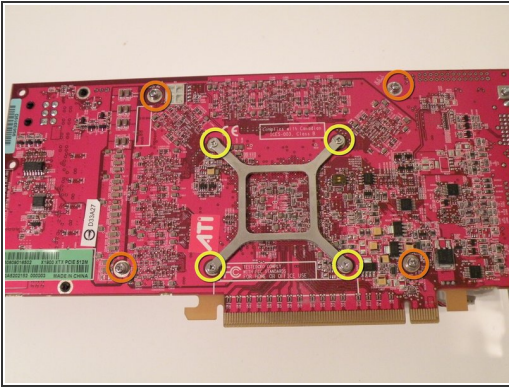
- Start by removing the card from the PC if you haven't already.

## Step 2



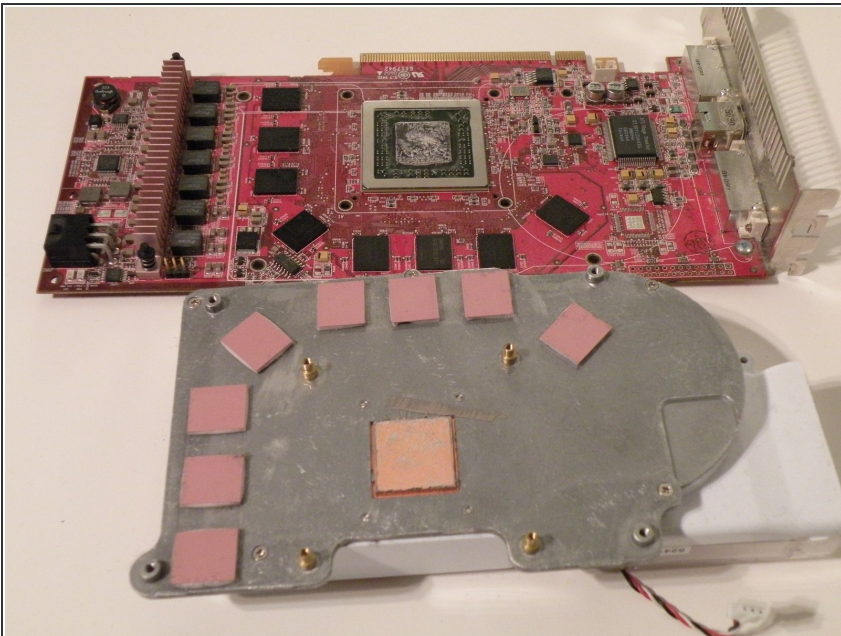
- The fan's power cable is located towards the bottom-left of the card.
  - Disconnect the cable from the card.
- ⚠ The cable and its connector on the X1900 are fragile. Be careful, and try not to use excessive force when removing it.

## Step 3



- Removing the heatsink from the card:
- The clamp is held on by four small Phillips screws. Remove them, then the clamp.
- Remove the four phillips screws surrounding the clamp.

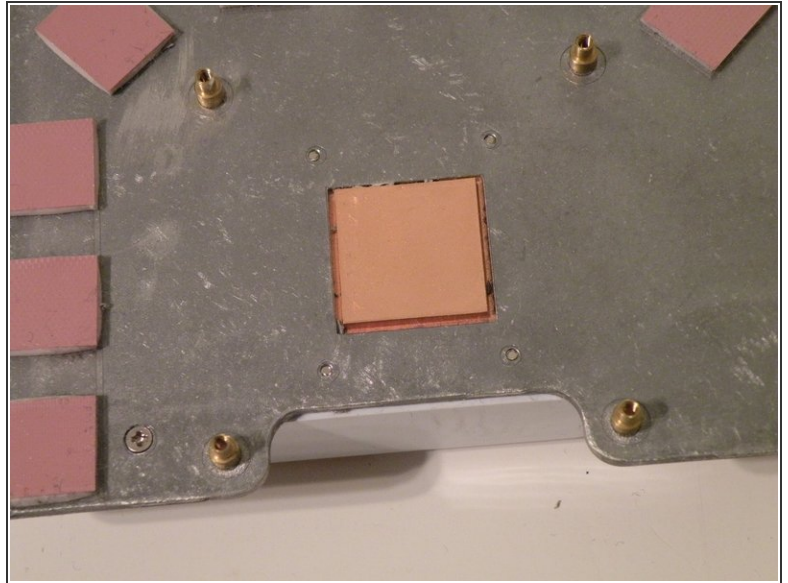
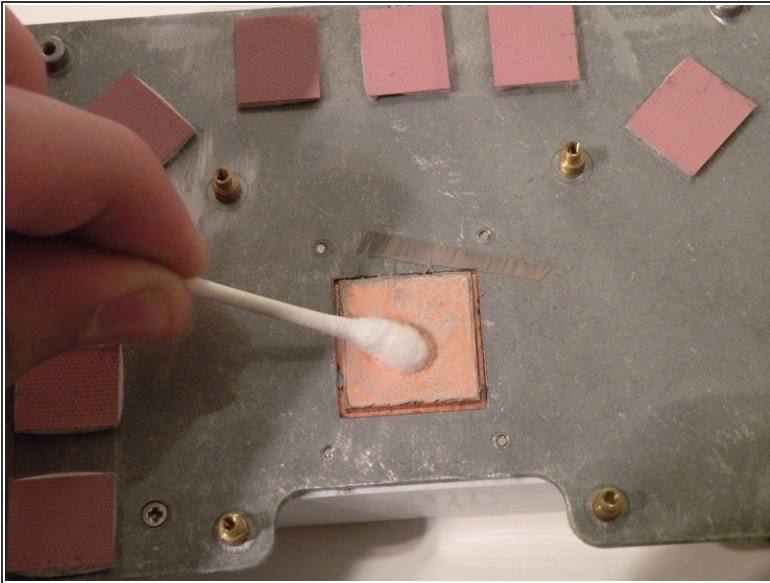
## Step 4



- Separate the heatsink and the card.

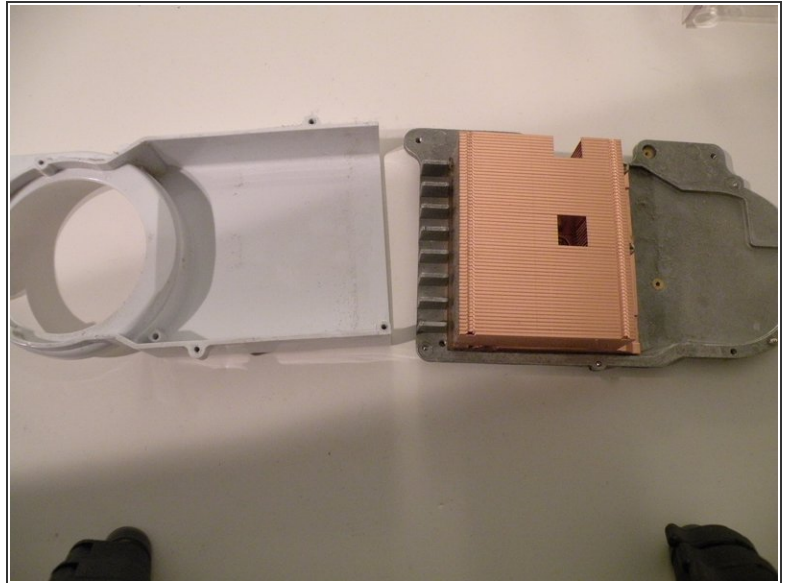
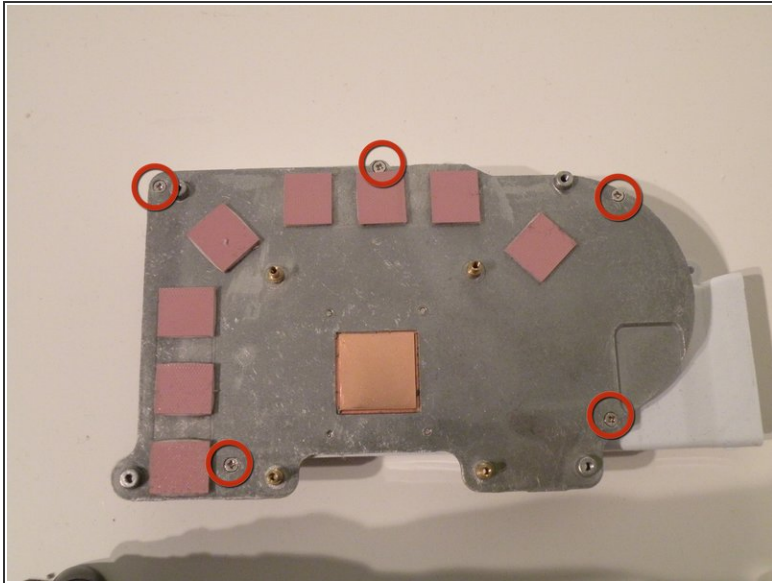


## Step 5



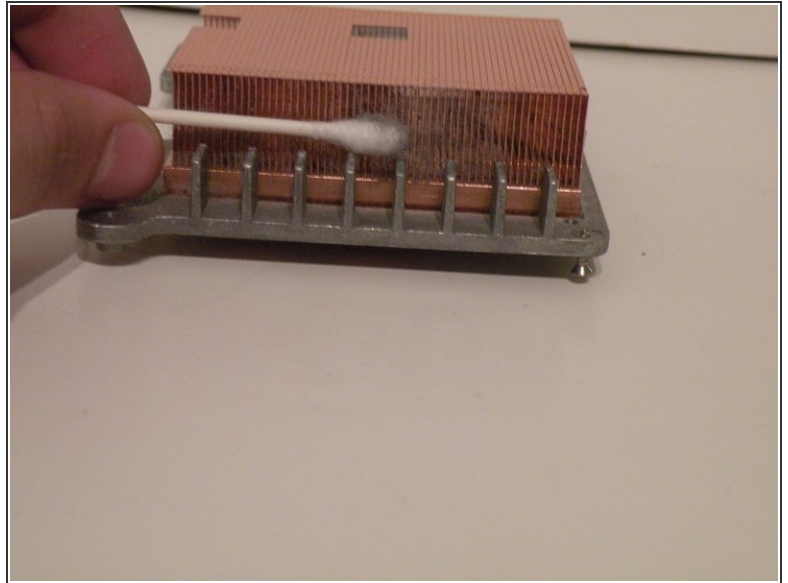
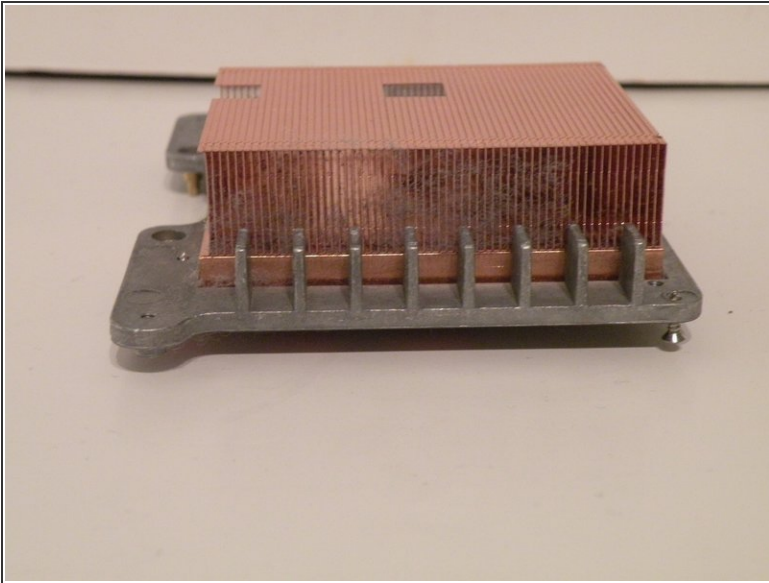
- Replacing Thermal Paste:
- Using a Q-tip/cotton swab and rubbing alcohol, clean the copper plate that protrudes from the bottom of the heatsink.

## Step 6



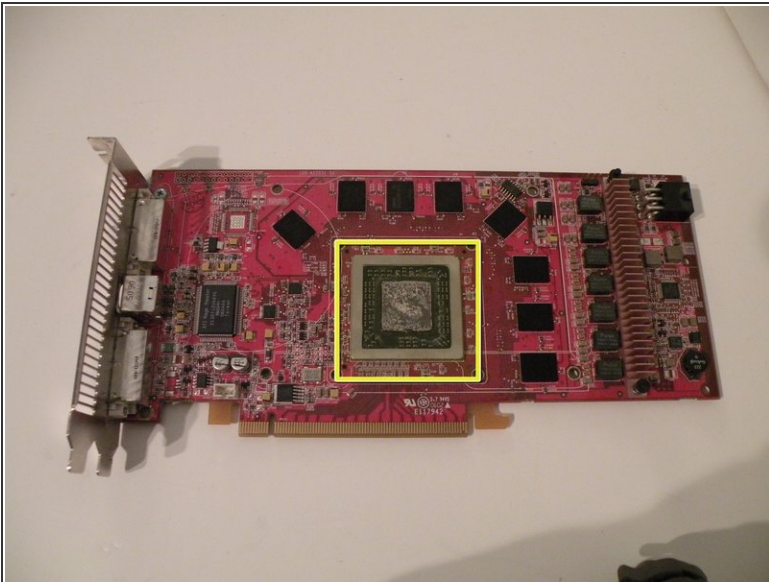
- Removing the heatsink's plastic cover:
- Remove these Phillips screws.
- Separate the plastic cover from the metal heat sink.

## Step 7



- Cleaning dust out of the heat sink:
- Using a cotton swab/q-tip, clean the edges of the heat sink. You can also use canned air if available.

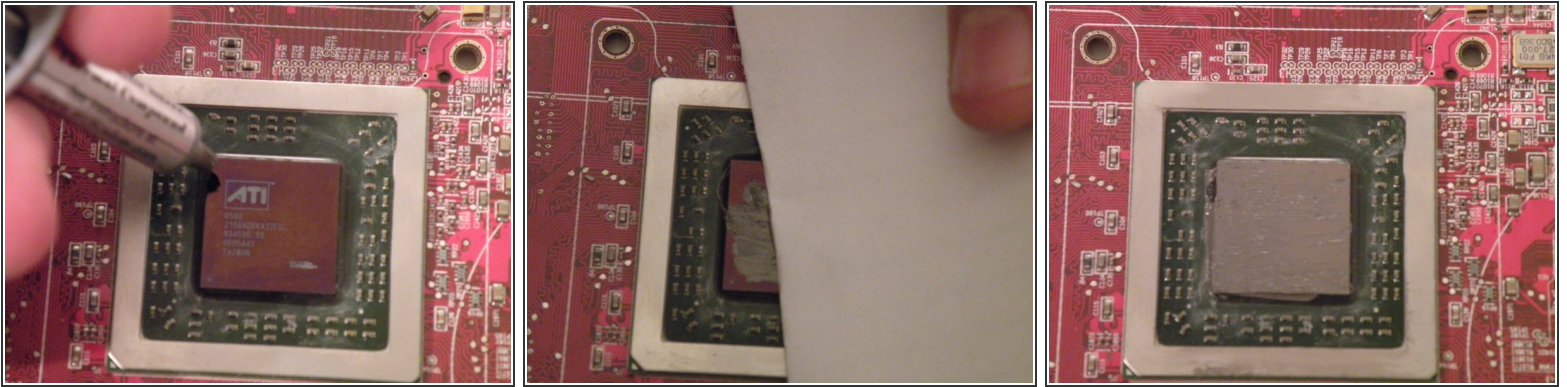
## Step 8



- Using the same method that you used to clean the copper plate, clean the surface of the GPU die.



## Step 9



- Re-Applying Thermal Paste:
- Apply a small glob of thermal paste to the corner of the die, (I recommend using [Arctic Silver 5](#)) and use an index card to spread a thin, even layer of it over the surface of the chip.
- For more detailed directions, follow our [Applying Thermal Paste Guide](#).

To reassemble your device, follow these instructions in reverse order.