



How to clean lens

Shows how to disassemble camera so that lens can be cleaned.

Written By: Stan





TOOLS:

- [Essential Electronics Toolkit](#) (1)
-

Step 1 — Remove battery.



- Insert wisdom here.

Step 2 — Remove cover on end of camera.



- Remove black screw on bottom corner near bottom left of picture viewing screen. Gently pry off end of camera, exposing 2 black screws. Remove both screws.

 If present, remove hand strap.

Step 3



- On hand strap anchor end, remove two black screws.

Step 4



- There are two black screws on the bottom of the camera right by the tripod mount. Remove the screw nearest to the back of the camera.

Step 5



- Open HDMI cover and remove single black screw.

Step 6



- Gently pry off back of camera.

Step 7



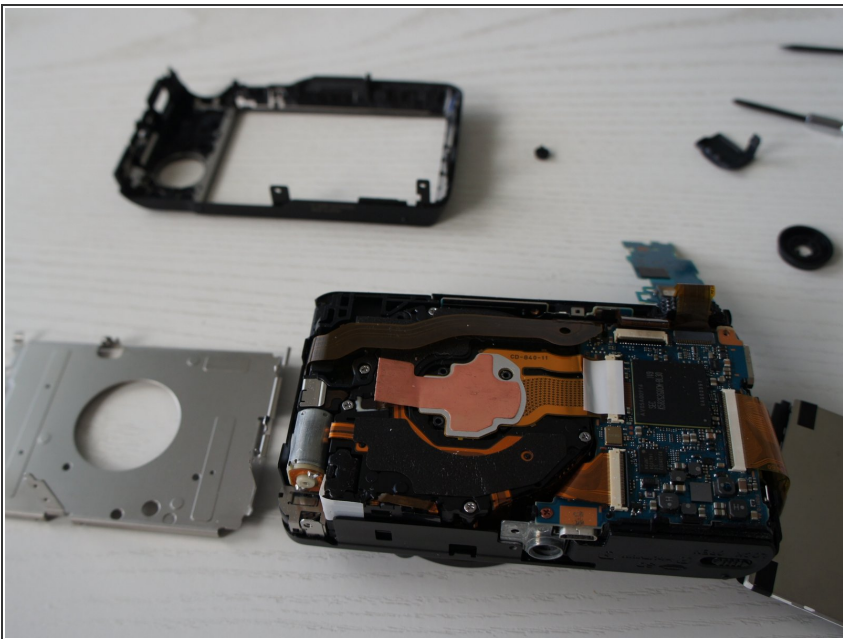
- Remove dial and centre button.

Step 8



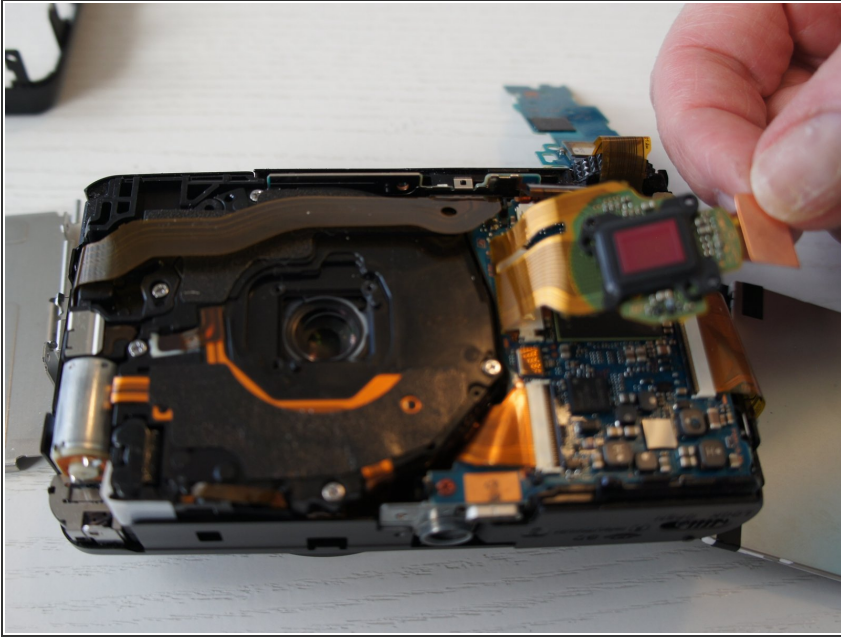
- Remove small circuit board.

Step 9



- Remove black screw in upper corner, and black screw from top.
- Remove metal cover.

Step 10



- Remove three silver screws.
- Gently lift copper tab to expose lens and CCD.
- Swab lens with 99% isopropyl rubbing alcohol (99% leaves very little residue when dry.)

To reassemble your device, follow these instructions in reverse order.