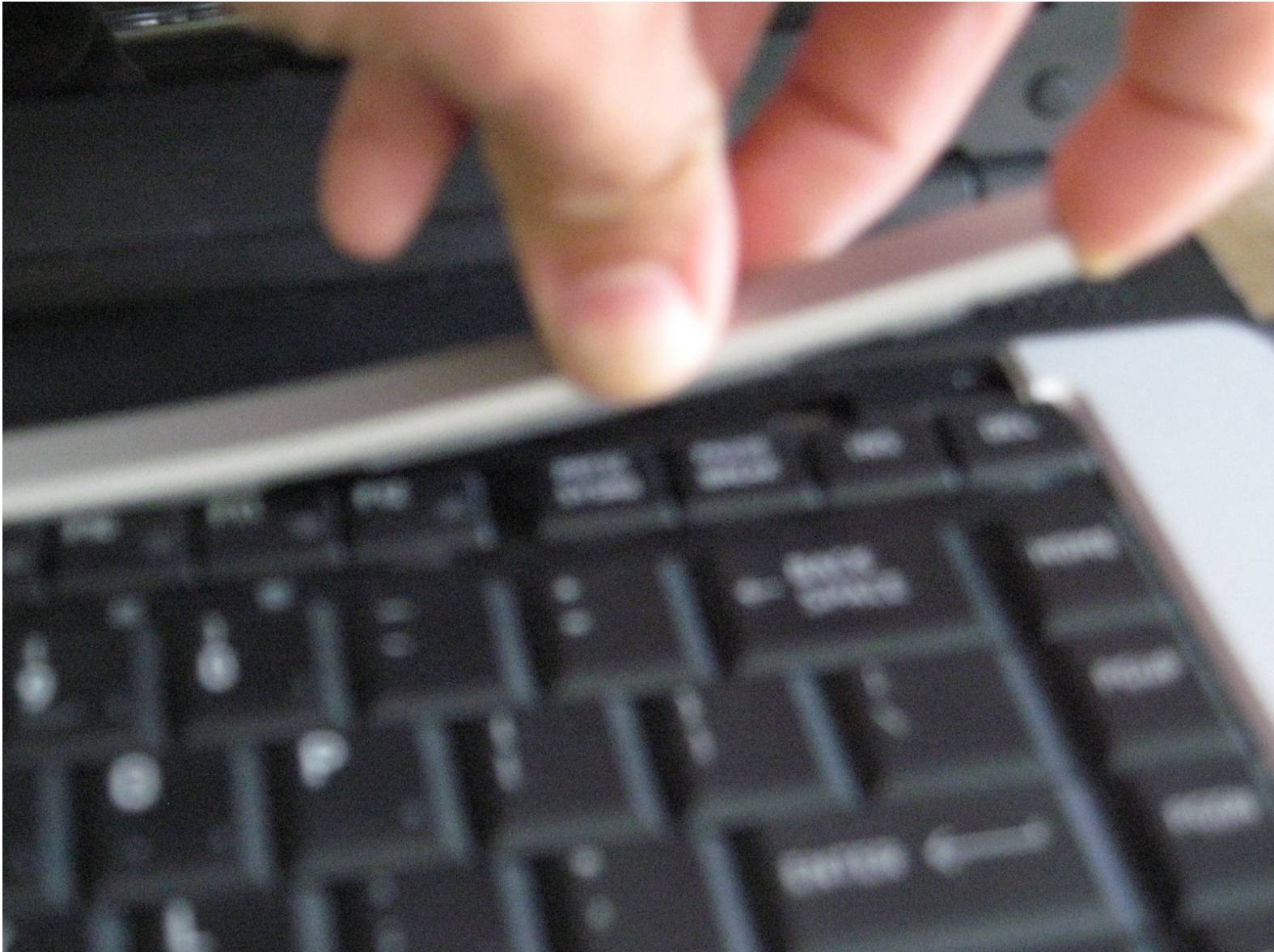




# How to cool down your wificard

Written By: G 2

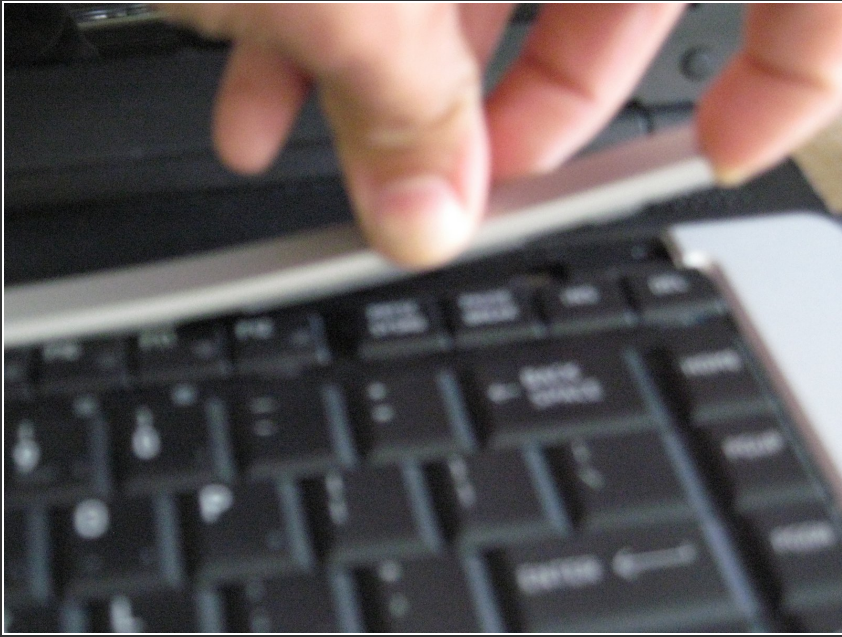




## TOOLS:

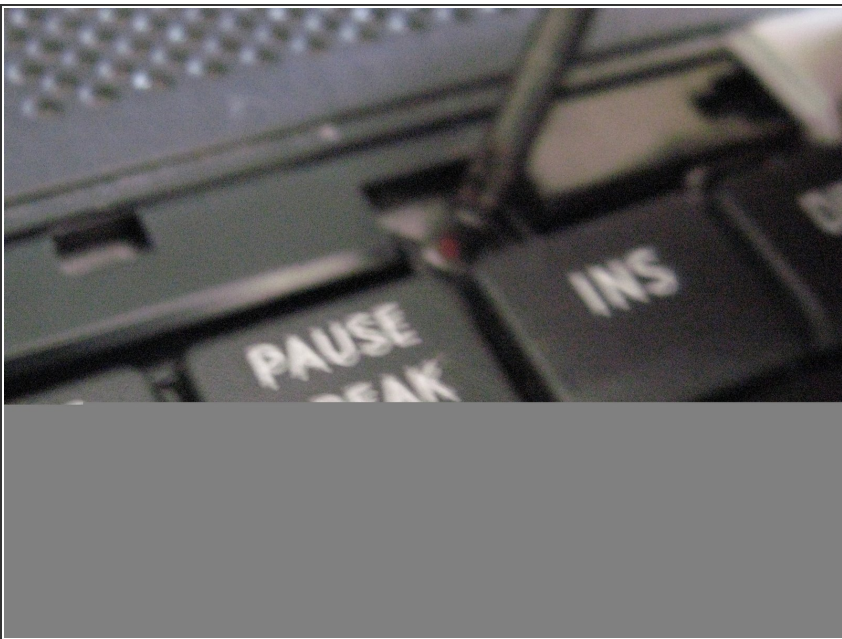
- [T6 Torx Screwdriver](#) (1)
  - [thermal compound](#) (1)
-

## Step 1 — How to cool down your wificard



- Carefully take off the top

## Step 2



- unscrew the keyboard



### Step 3



- Pull the keyboard out

### Step 4



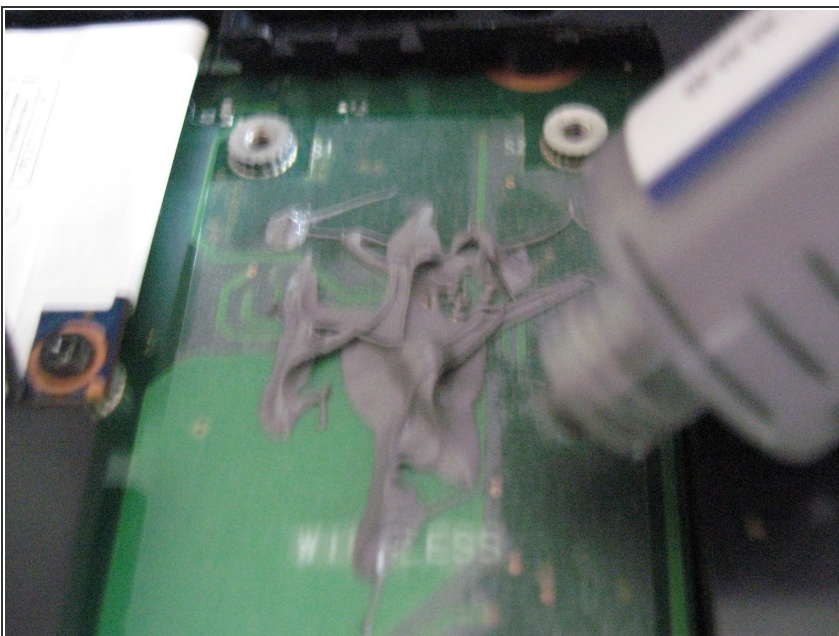
- Carefully unplug the Aux and Main off the WiFi card

## Step 5



- unscrew it

## Step 6



- Add a lot of **NON CONDUCTIVE** thermal compound



## Step 7



- screw the card back on

To reassemble your device, follow these instructions in reverse order.