



# How to create and install a Cisco EX90 console cable

This document will provide instruction of how to create an EX90 console cable and console into a unit. The information in this guide will also work with the Cisco EX60

Written By: eric





## TOOLS:

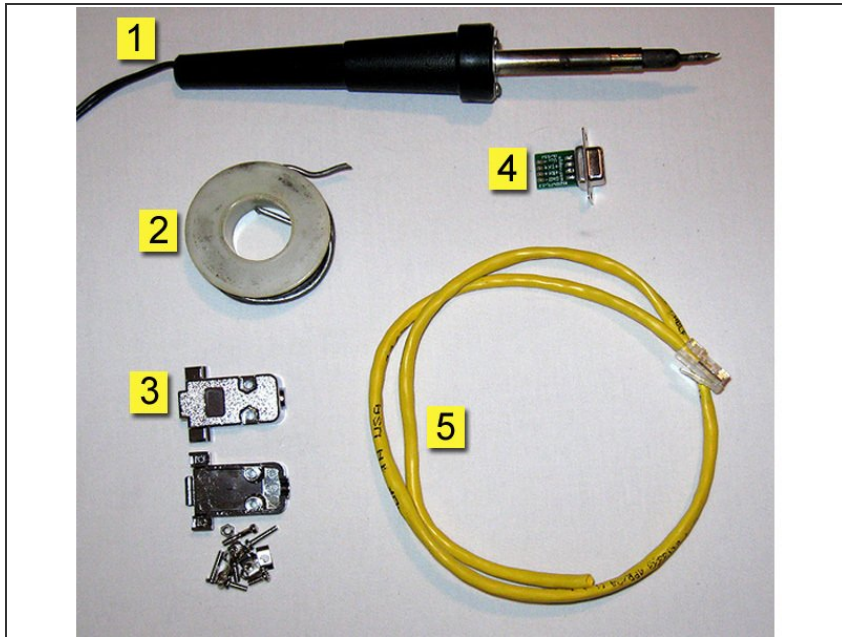
- [Wire Stripper](#) (1)
- [Solder](#) (1)
- [Soldering Iron](#) (1)



## PARTS:

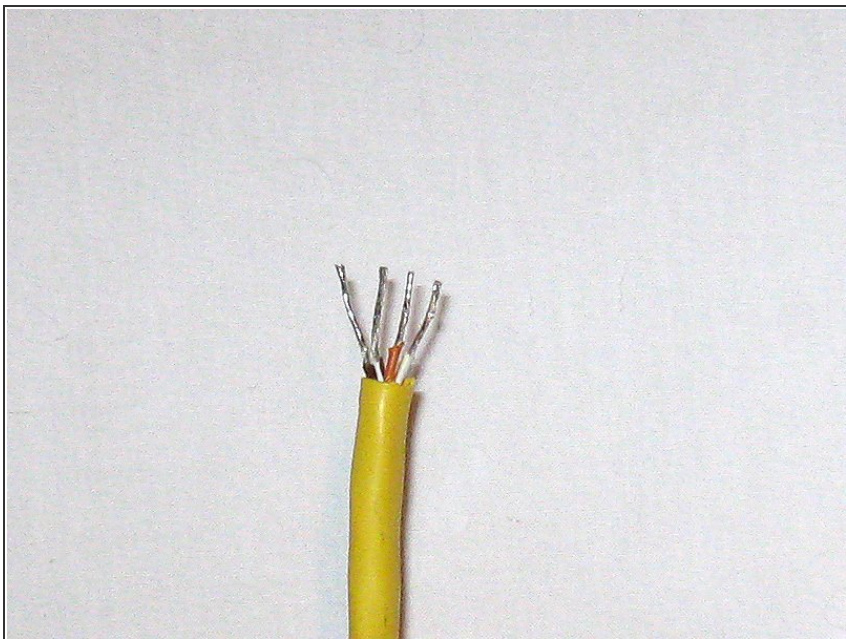
- [DB9 Enclosure](#) (1)
- [RS232 to TTL/CMOS converter](#) (1)
- [Cable with 8P8C \(RJ45\) on one end](#) (1)

## Step 1 — How to create and install a Cisco EX90 console cable



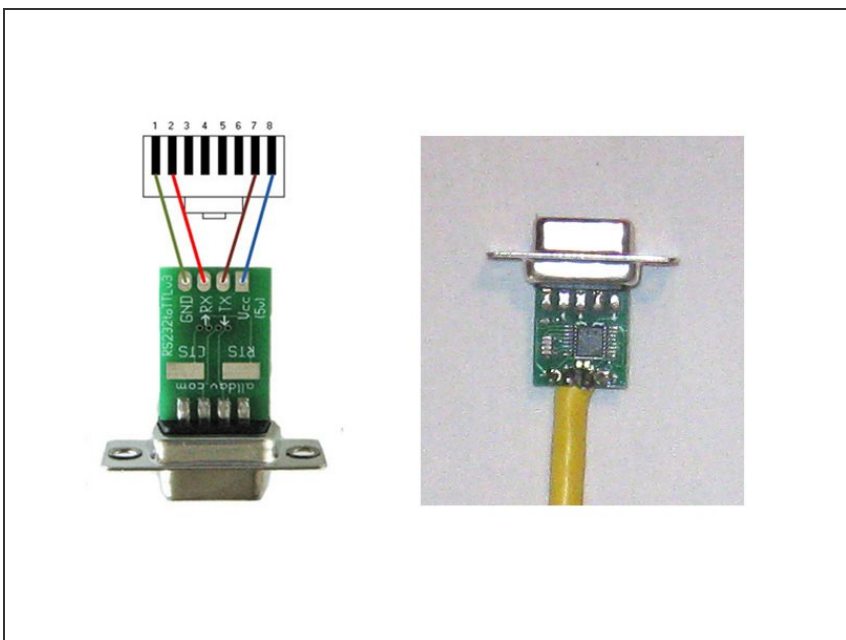
- **Gather the necessary tools**
  - 1--Soldering Iron
  - 2--Solder
  - 3--DB9 Enclosure. This [one](#) is being used here.
  - 4--RS232 to TTL/CMOS converter. [alldav.com](http://alldav.com) sells the one used here. Cisco does not recommend or endorse Alldav specifically.
  - 5--Cable w/RJ45 connector on one end Any type of cable with an 8P8C (RJ45) connector could be used as long as pins 1,2,7 & 8 are connected. A standard RJ45 cable is being used here.
- You will also need wire strippers and possibly a screwdriver (depending on which DB9 enclosure you are using).

## Step 2



- **Prep the cable.** Strip the sheathing from the wires that correspond to pins 1,2,7 & 8.

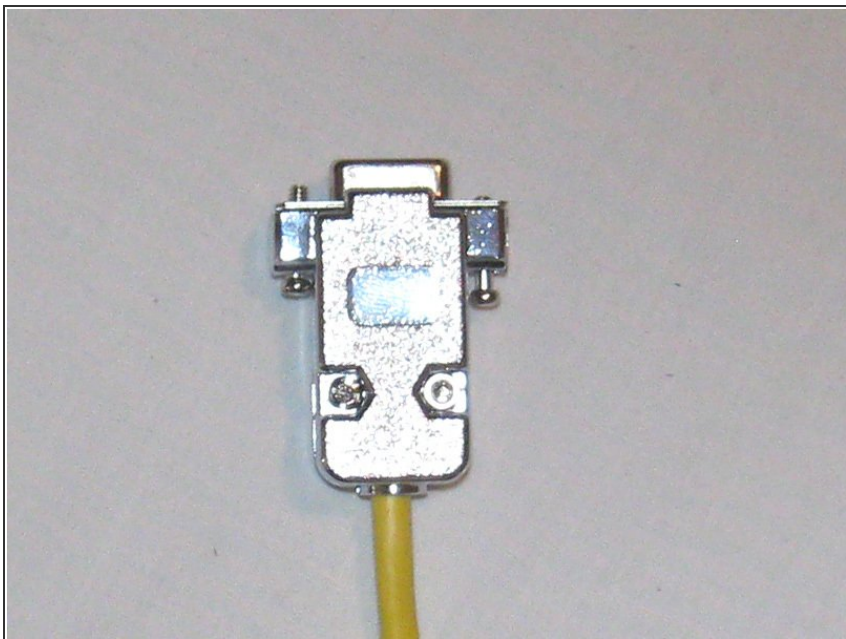
## Step 3



- **Connect the RS232 to TTL/CMOS converter.** Connect the RS232 to TTL/CMOS converter to the cable and solder the connections. **Note:** The colors used in the wiring diagram don't correspond to the color of the actual wires.

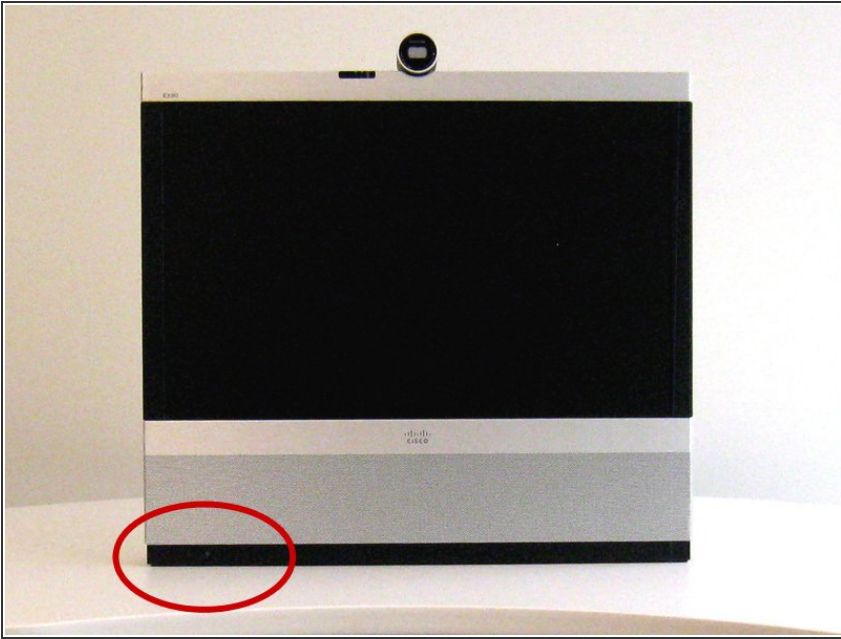


## Step 4



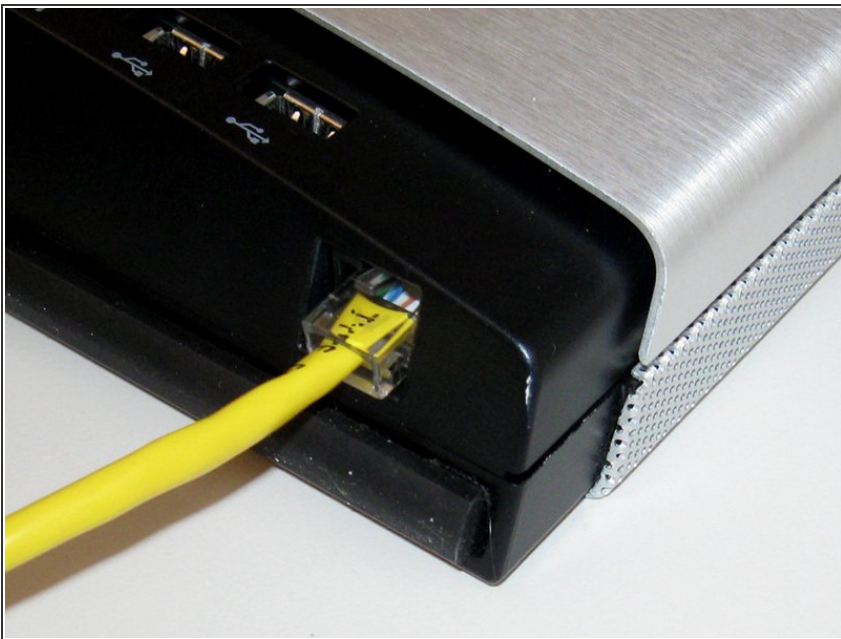
- **Install the Enclosure** The EX90 console is now complete. The subsequent steps will cover making a console connection.

## Step 5



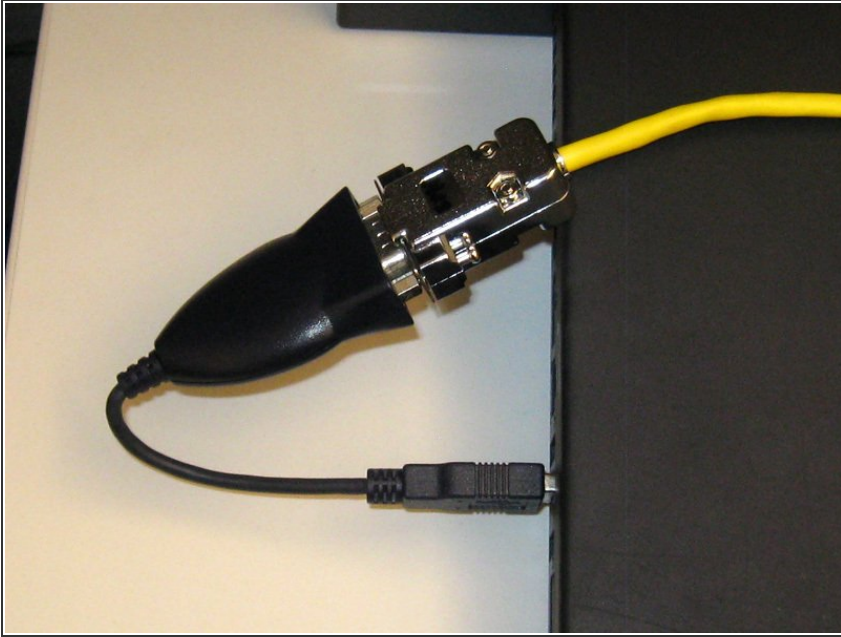
- **Make a Console Connection.** Locate the Console Port. The EX90 console port is an 8P8C (RJ45) connection and is located on the bottom left corner of the unit.

## Step 6



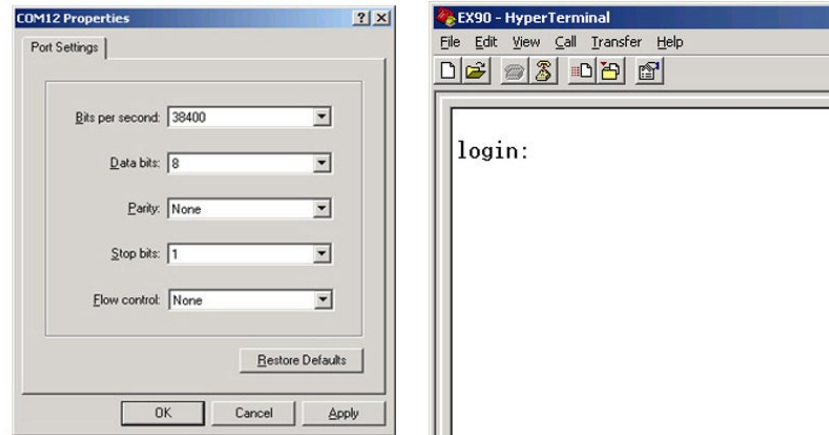
- **Connect to the Console Port.** Plug the 8P8C (RJ45) end into the console port. You'll have to lean the unit forward to plug the cable in. It might be a little awkward to do alone. If someone else is available, ask for their assistance. As a last resort, lay the unit down. Ensure you have something soft (like a towel) to lay the unit on.

## Step 7



- Connect the DB9 to a USB serial adapter and connect to a laptop/PC.

## Step 8



- **Configure a Terminal Emulator Session** Configure your terminal emulator with the following parameters:
  - Baud=38400
  - Data bits=8
  - Parity=none
  - Stop bits=1
  - Flow Control=none
- The example uses HyperTerminal for Windows; configuring your terminal emulator may vary slightly.
- You should now be at a login prompt when you connect with the terminal emulator.