



# How to find Xperia M2 Model, Serial, Identification Number, IMEI

Xperia M2 - Finding the Model, Serial, Identification Number, IMEI

Written By: ZFix



---

## INTRODUCTION

Because, for this model the battery / back cover is glued to the phone frame, you can't find there the sticker with the serial number, model name and other information for the phone.

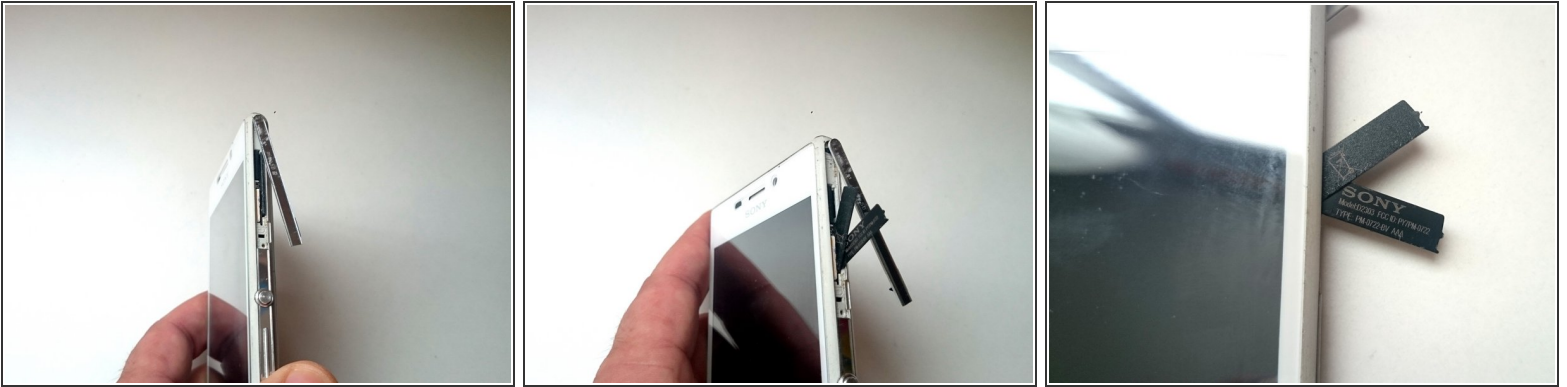
[video: <https://www.youtube.com/watch?v=CGYBeSJSdkg>]



### TOOLS:

- [SIM Card Eject Tool](#) (1)
-

## Step 1 — How to find Xperia M2 Model, Serial, Identification Number, IMEI



- Detach the cover for the micro SIM card and memory card slot.
- Place a fingernail or sharp object under the edge of the label trays and carefully then drag the two label trays outwards to view your IMEI number, model, etc.

To reassemble your device, follow these instructions in reverse order.