



How to fix Bad GPS and Cell Phone Signal for LG G2

How to Easily Boost Your GPS - Cell Phone Signal in 2 min.

Written By: bonetti



INTRODUCTION

Due to the many problems with cell phone signal and gps on LG G2, i will show you how to boost your gps and cell phone signal in 2 min.

Just watch the video below:

[video: <https://www.youtube.com/watch?v=dfS4LpfcLfg>]



TOOLS:

- [iFixit Opening Tools](#) (1)
 - [Utility Scissors](#) (1)
 - [Tweezers](#) (1)
-

Step 1 — How to fix Bad GPS and Cell Phone Signal for LG G2



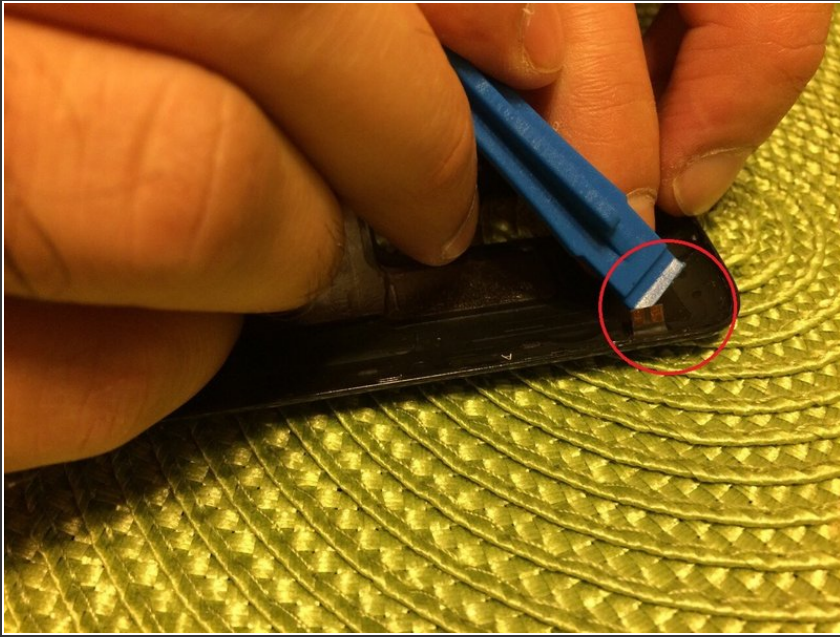
- Tools required.

Step 2



- Open the back panel and locate these three connectors.

Step 3



- Gently lift up all three connectors.

Step 4



- Cut a piece of thin cardboard.

Step 5



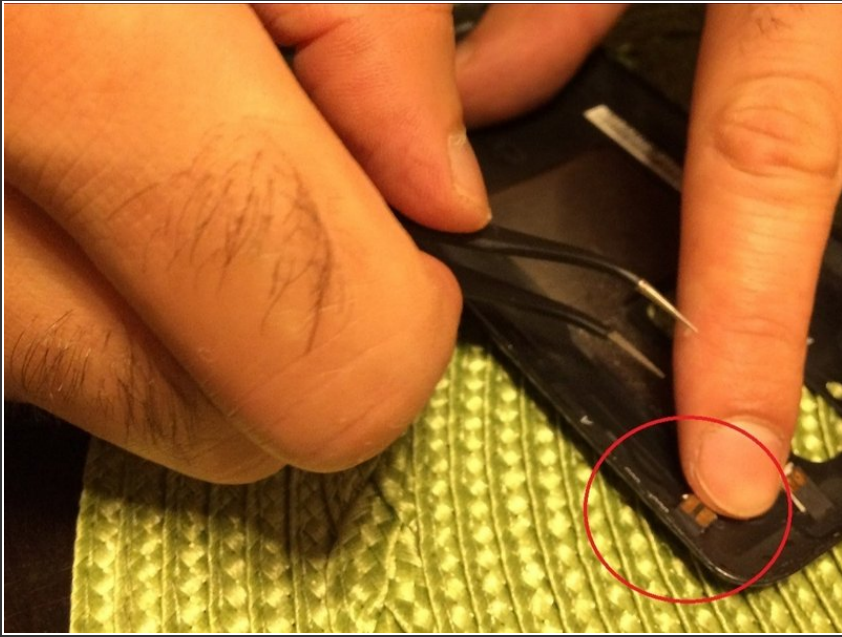
- Cut the pieces close to the size of the connectors.

Step 6



- Place the cardboard pieces under all three connectors.

Step 7



- Gently press down the connectors.

Step 8



- Close the back panel.

To reassemble your device, follow these instructions in reverse order.