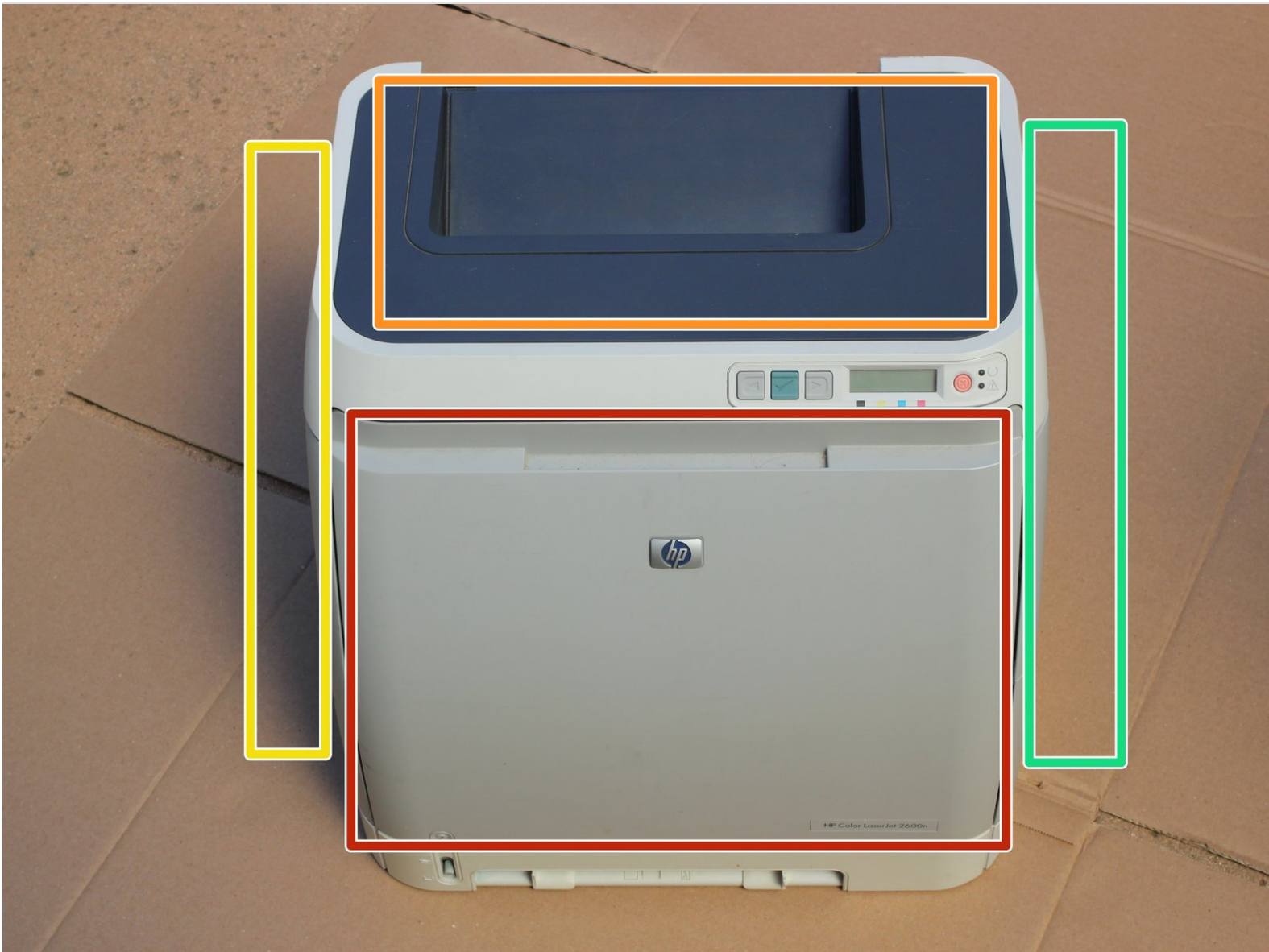




How to fix HP Color LaserJet 2600n Fading Color

Over time, this printer often begins to print magenta less vividly, particularly in the center of the page. This guide explains how to clean the scanning element so that it prints color vividly once again.

Written By: Jay Miley



INTRODUCTION

Over time, the laser toner leaks into the scanning element and can interfere with the printer's ability to produce consistent color. To repair this, we first must disassemble the printer to reach the scanning element, and then clean the optics so the printer produces color as it was meant to.

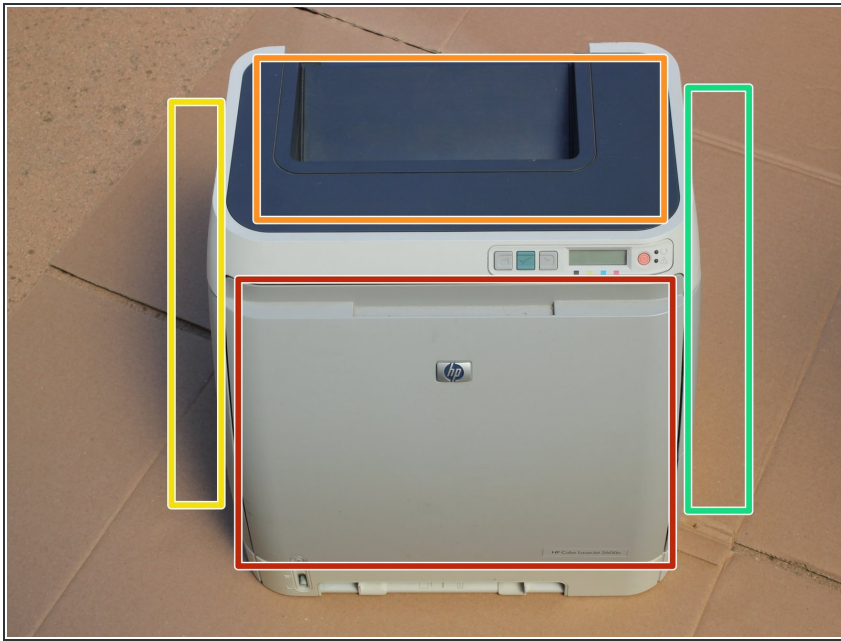
The first time I did this repair it was with guidance from the pdf attached to the first reply in [this thread](#)



TOOLS:

- [Phillips #1 Screwdriver](#) (1)
 - [Compressed Air](#) (1)
 - [Q-Tips](#) (1)
-

Step 1 — How to fix HP Color LaserJet 2600n Fading Color



- ❗ Before we begin, make sure to unplug the printer and any connected wires. To be extra safe, turn the power switch to 'off.'
- First, let's establish what part of the printer is what so that we can communicate clearly throughout the guide. The red square is the front and the orange square is the top. After those, we have left (yellow), and right (green). The back is opposite the front and the bottom is opposite the top.

Step 2



- ❗ Laser printers often have loose toner, a very fine and vibrant powder that will invade everything you don't want it to. I did my disassembly outside
- Open the front door and remove the toner cartridges.
- Set the cartridges aside for later. To keep them clean, place them in a bag or closed box.

Step 3



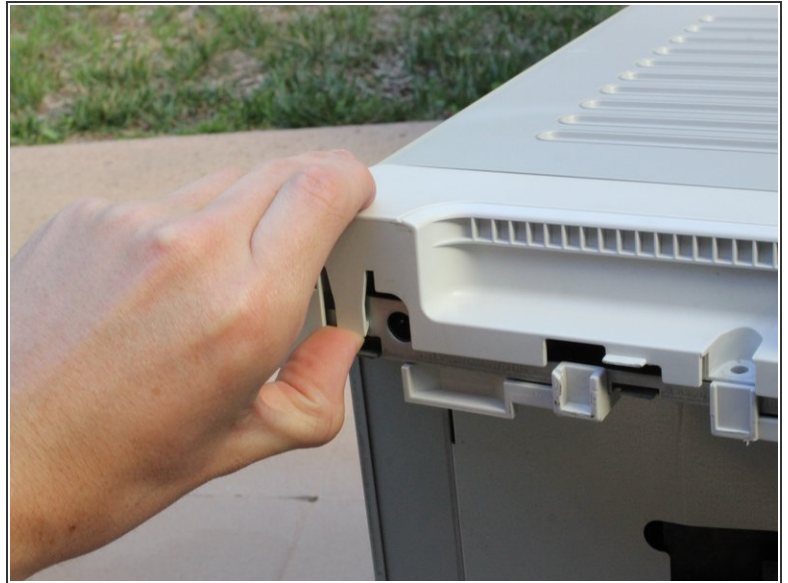
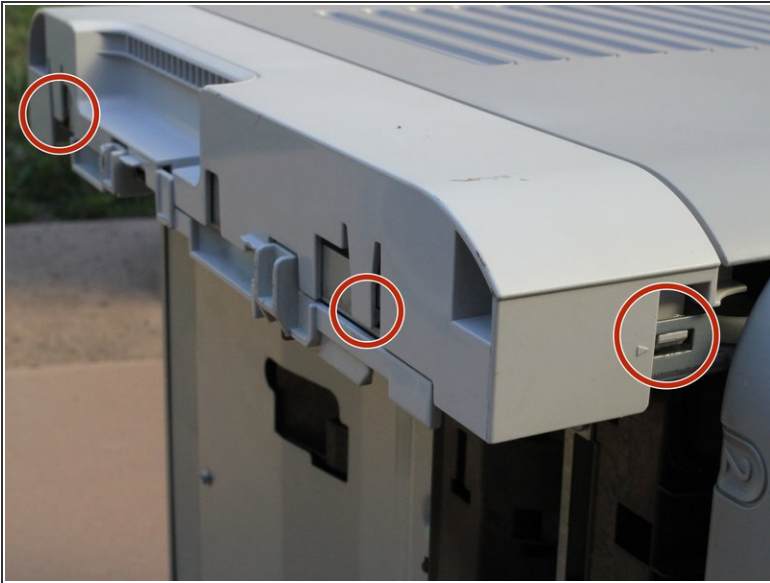
- Place the printer so that the right side is on the ground.
- Remove the paper tray from the bottom of the printer.

Step 4



- Remove the indicated Phillips M3 screw from the left side of the printer
- ⓘ In this photo, the paper tray is still in the printer. On your device, the tray should already be set aside.

Step 5



- Release the tabs as indicated in the example by lifting or pressing them as needed.
- ⓘ Some of the press tabs are hard to reach with a finger. If needed, gently press in the tab with a screwdriver until it releases.

Step 6



- Lift and remove the left base cover

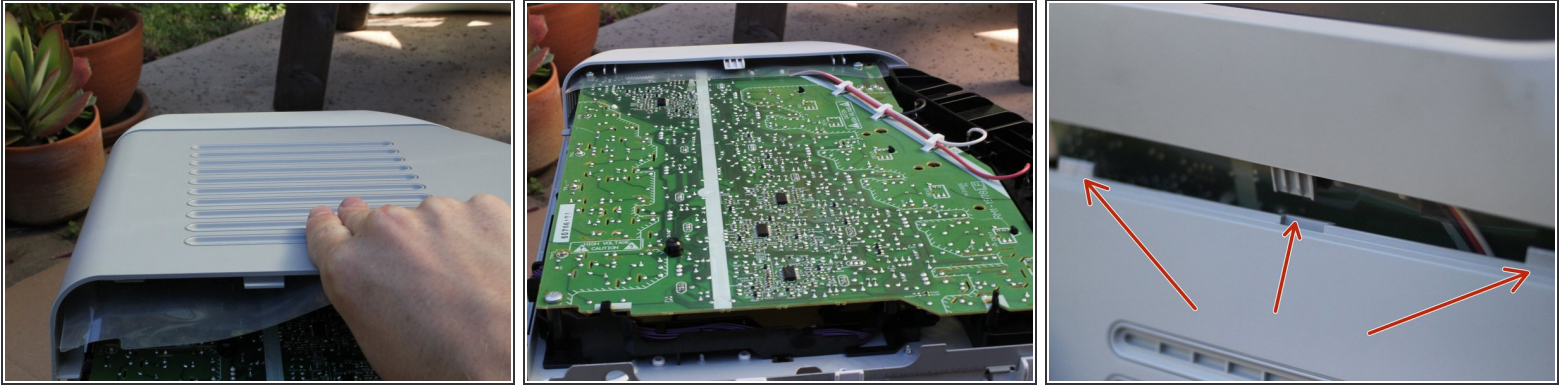
⚠ If it feels like something is holding the cover in place, there probably is. Go back and look for additional tabs, as I may have missed listing some of them. This applies to any item removal in this guide.

Step 7



- Release the tab fasteners on the left side cover

Step 8



- Lift and remove the left cover

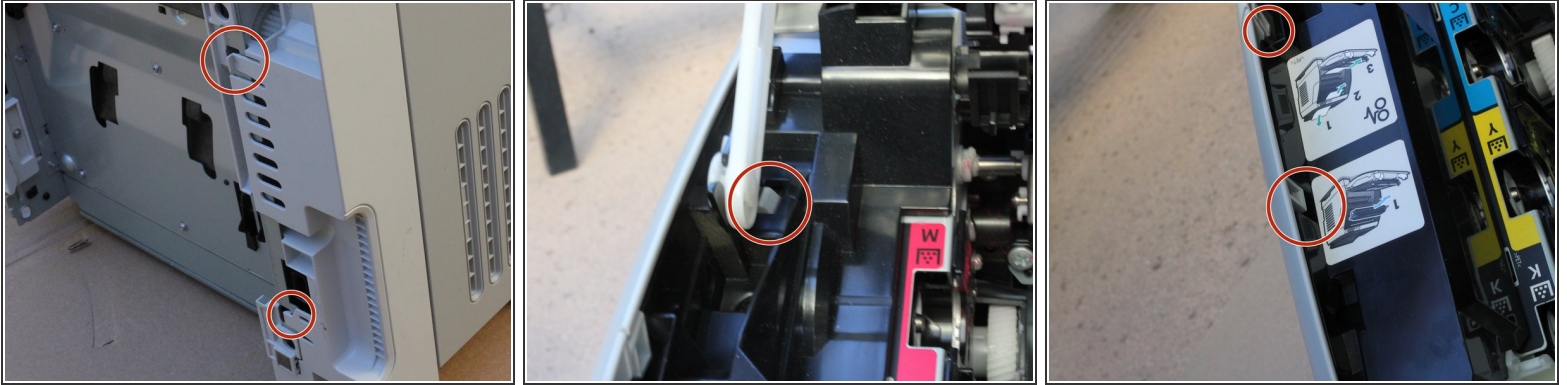
- ☒ If it feels like something is holding the cover in place, there probably is.
- ☒ When reassembling, you have to mate the three noted tabs/slots, even though they do not snap in place.

Step 9



- Rotate the device so it rests on its back.
- Unscrew and remove the two Phillips M3 screws as indicated from the right side covers.
- ⓘ Most of the screws in this printer are identical - the ones that are different will be noted as such.

Step 10



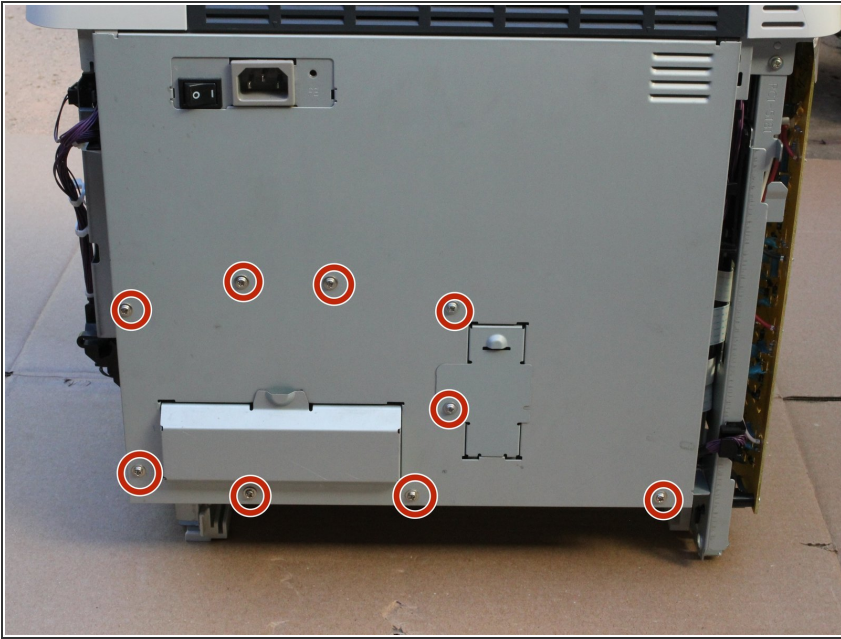
- Release tabs on the right base cover and right cover.
- Some of these tabs are inside the printer, so you will need to open the door and look along the right side.

Step 11



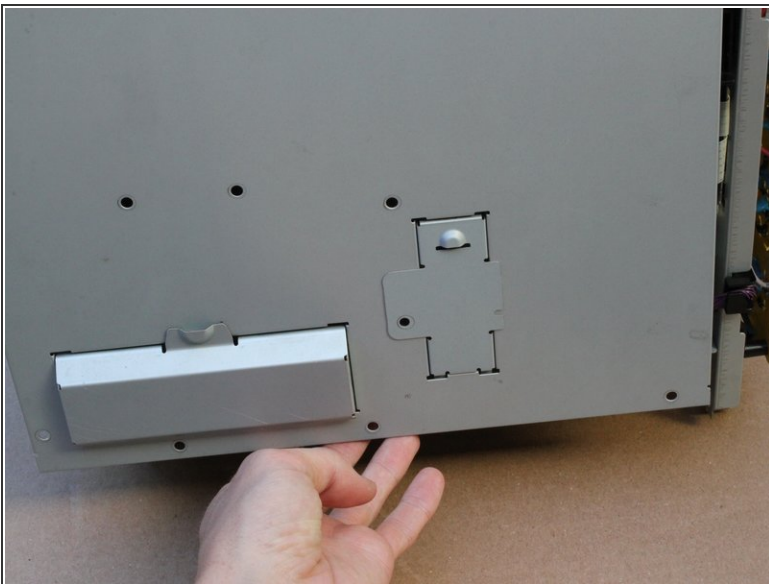
- Remove the right base cover and right cover from the printer.
- ☒ If it feels like something is holding the cover in place, there probably is.
- ☒ When reassembling, you have to mate the three noted tabs/slots, even though they do not snap in place.

Step 12



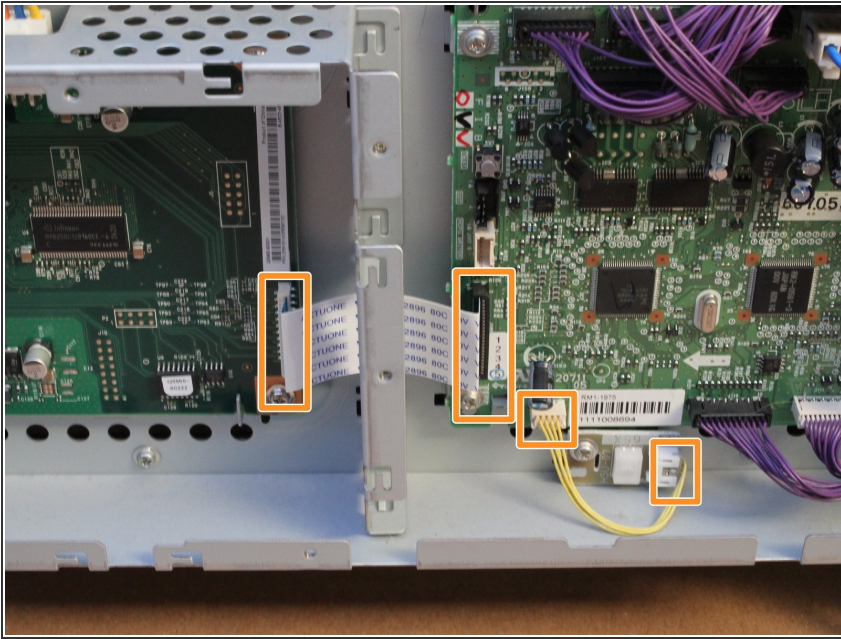
- Place the device right side up once again.
- Remove the nine indicated Phillips M3 screws from the back plate.

Step 13



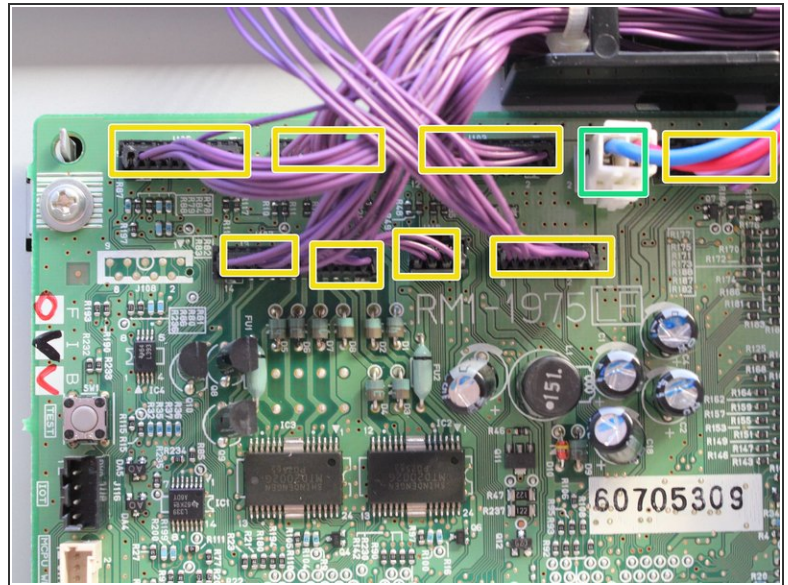
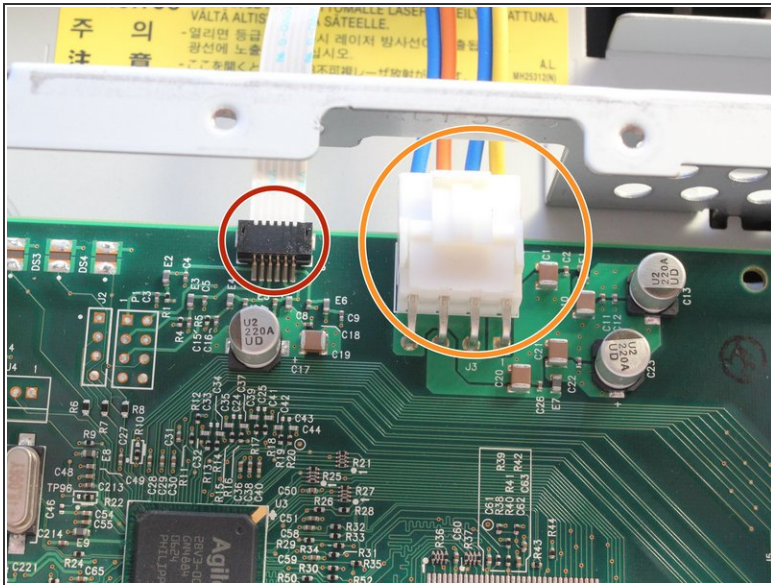
- With the screws removed, lift the back cover from the bottom and remove from the printer.

Step 14



i During the next two steps, do not unplug any of the connections in the example boxed in orange.

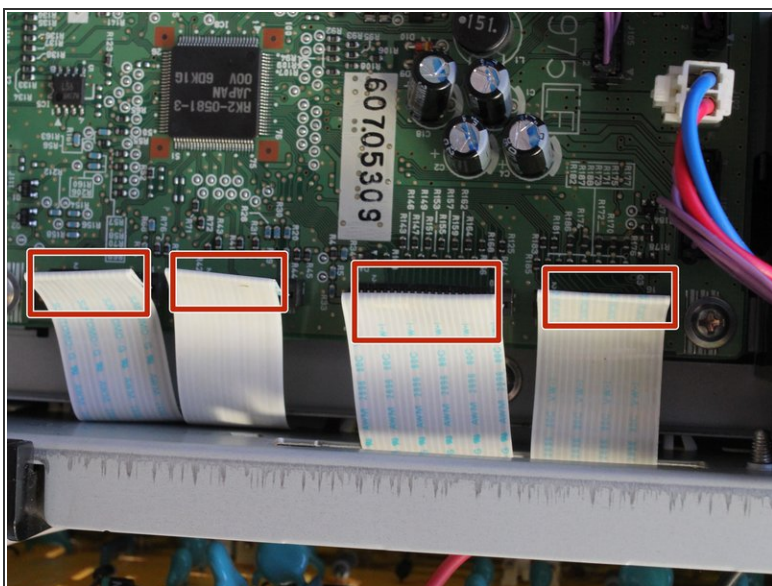
Step 15



⚠ Carefully and gently handle the wires and cables in the printer. They may break or bend, rendering your printer inoperable.

- Remove the ribbon cable by pulling directly along the cable.
- Remove the white connector by pressing down on the tab and pulling out.
- Pull the purple wire connectors directly out. You do not need to mark which cable goes where, as they are all unique sizes.
- Remove the white connector by pressing down on the tab and pulling out.

Step 16



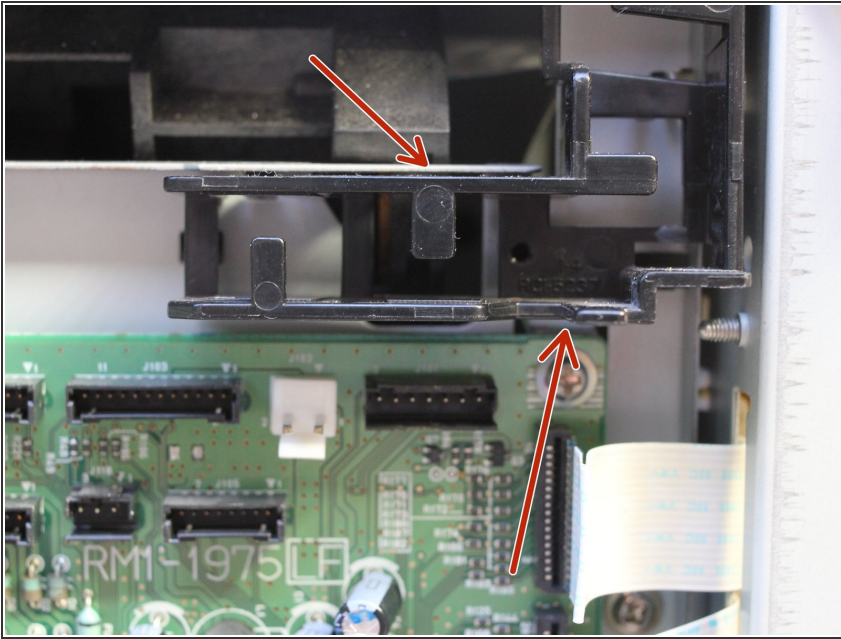
- Remove the four ribbon cables gently from the right edge of the circuit board assembly.
- Remove the final two wires by pulling them straight out.

Step 17



- Unwind the cables from the black harness on the top and right edges of the circuit board assembly.

Step 18



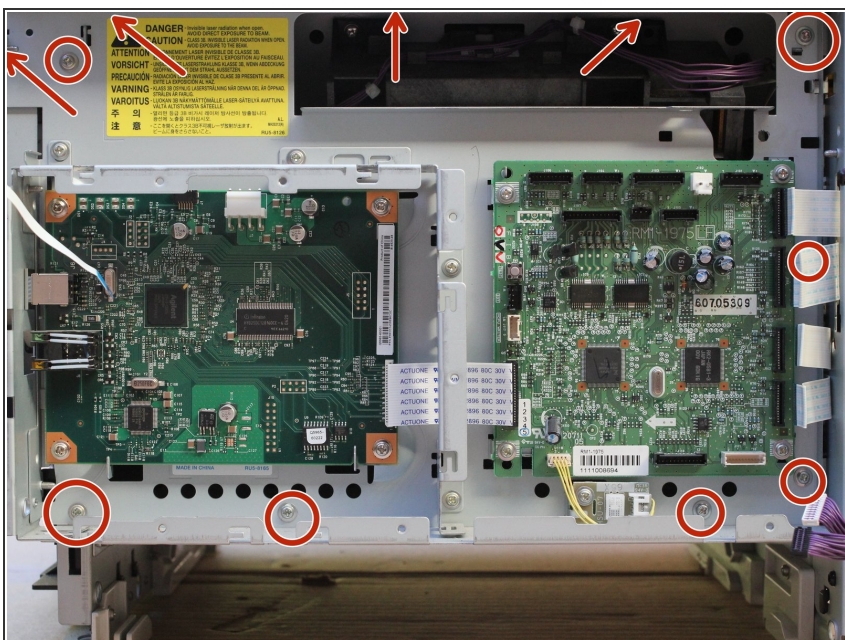
- Depress the indicated tabs and remove the corner wiring harness from the circuit board assembly.

Step 19



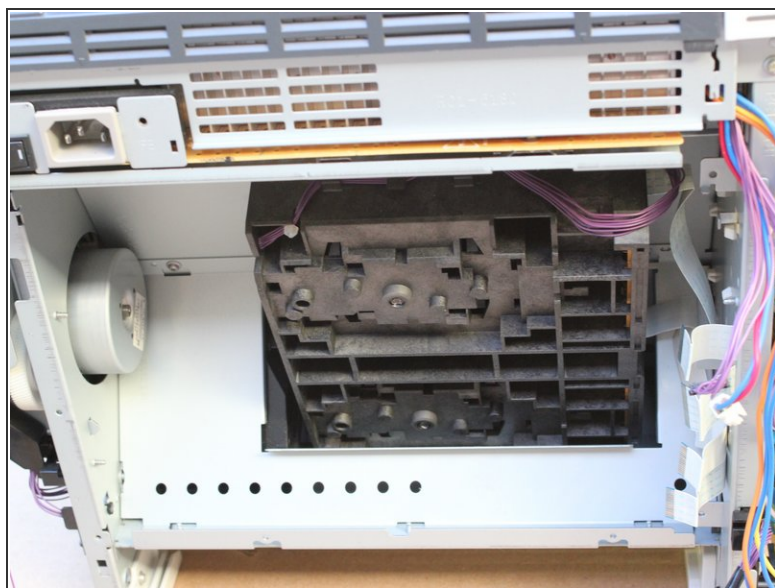
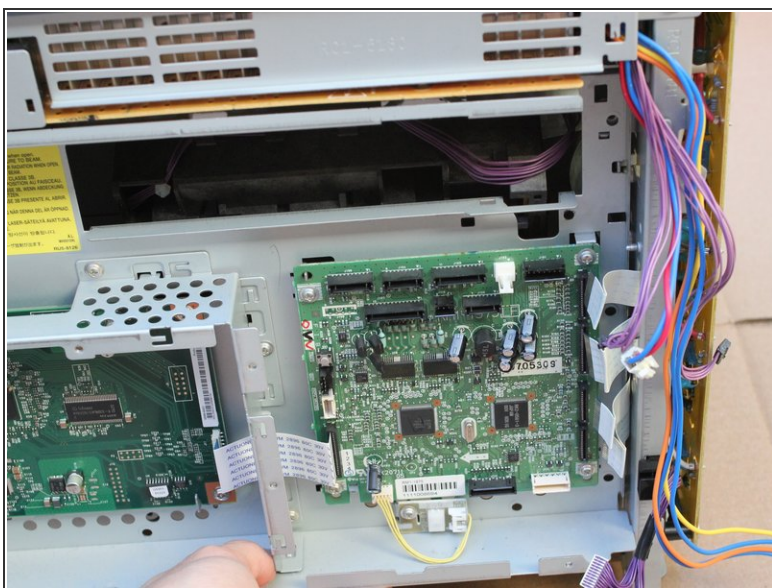
- Slide the top wiring harness to the left and remove it from the circuit board assembly.

Step 20



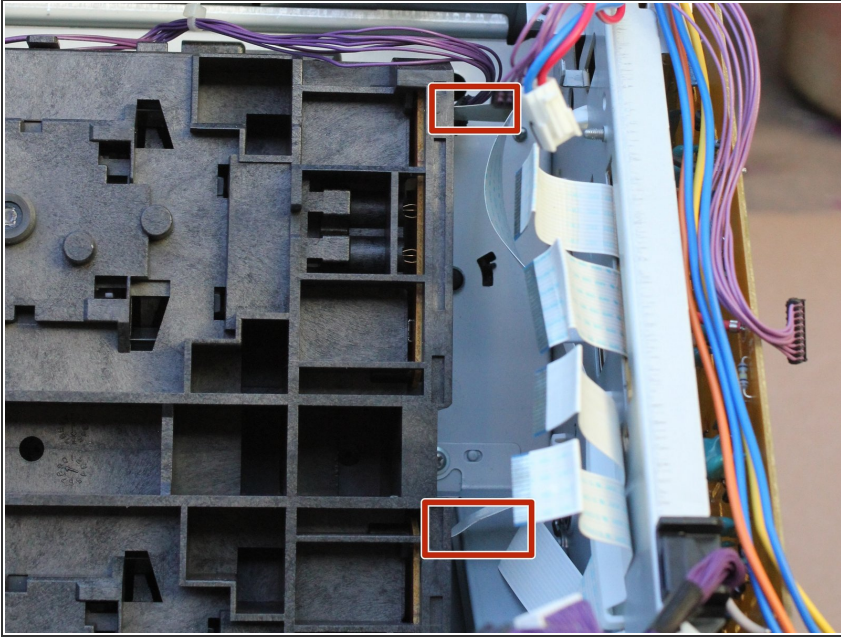
- Remove the eleven indicated Phillips M3 screws from the circuit board assembly.

Step 21



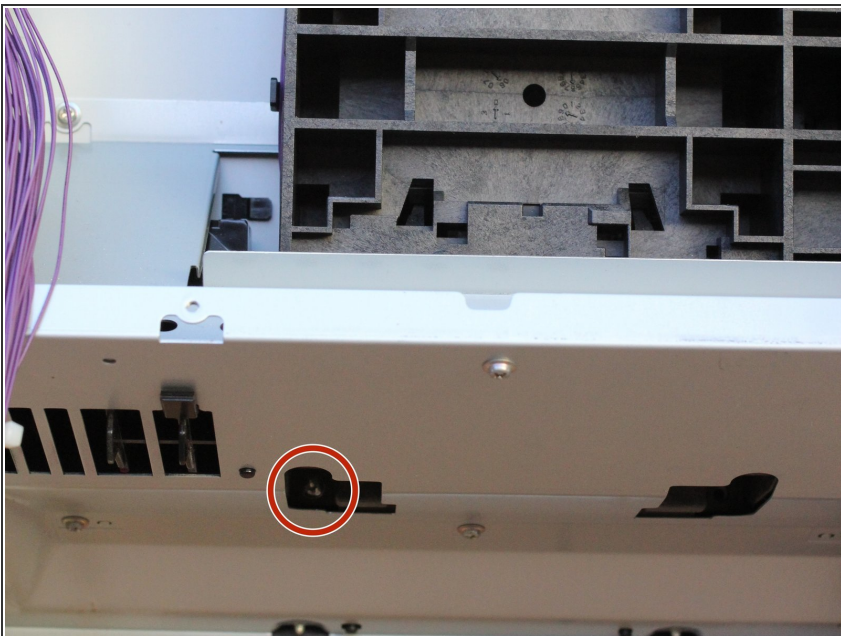
- Remove the circuit board assembly from the printer, being cautious of the wires and cables,

Step 22



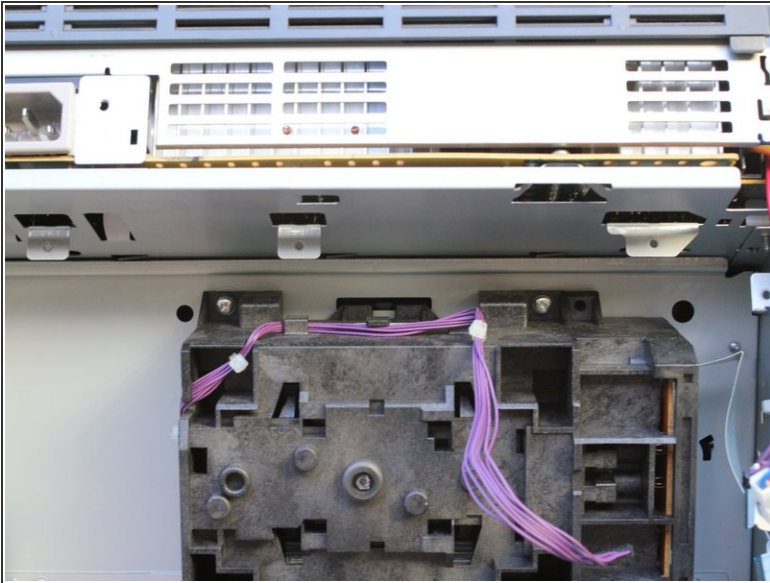
- Remove the two ribbon cables gently from the optical sub-assembly.
- ⓘ These ribbon cables are hard to replace. If you are having trouble, try asking someone with smaller hands! Be gentle, ribbon cables are not the most robust connectors.

Step 23



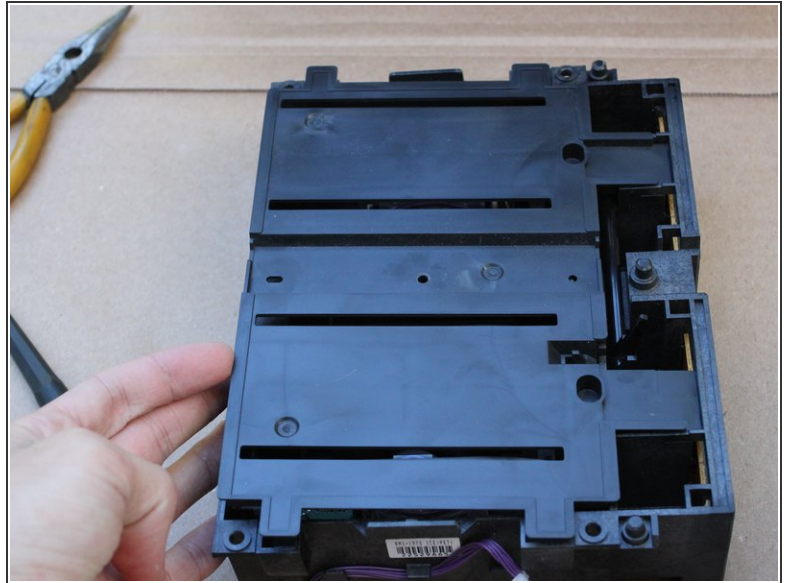
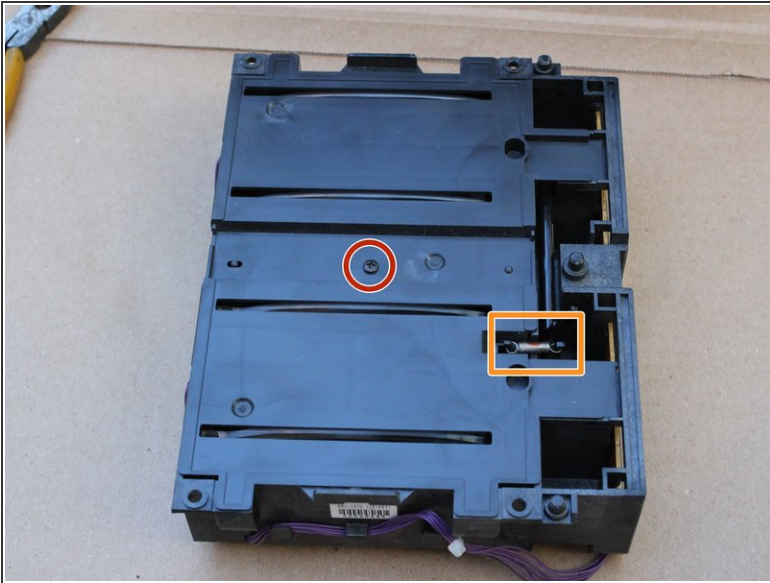
- Tilt the printer forward and remove the Phillips screw with a lock-washer from the bottom area of the printer.
- ⓘ The lock-washer is attached to the screw, so you do not need to worry about losing it.

Step 24



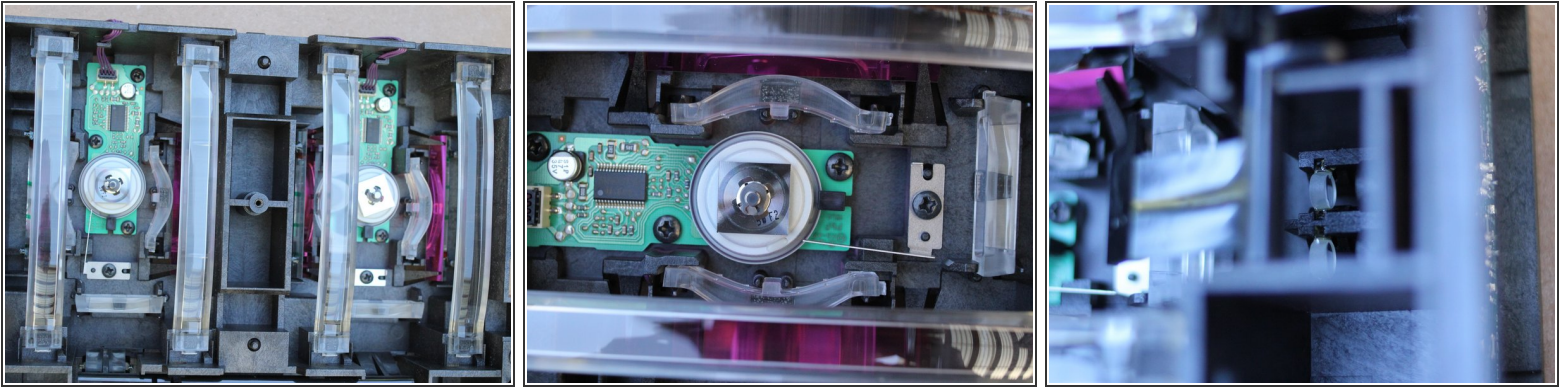
- Set the printer back down and remove two more Phillips screws with integrated lock-washers, which releases the optical sub-assembly.
- Remove the optical sub-assembly, this is what you need to repair.


Step 25





- Place the optical sub-assembly with the side that was facing you down.
- Remove the indicated black screw.
- Unhook and save the indicated spring.
- Remove the top plate from the optical sub-assembly.

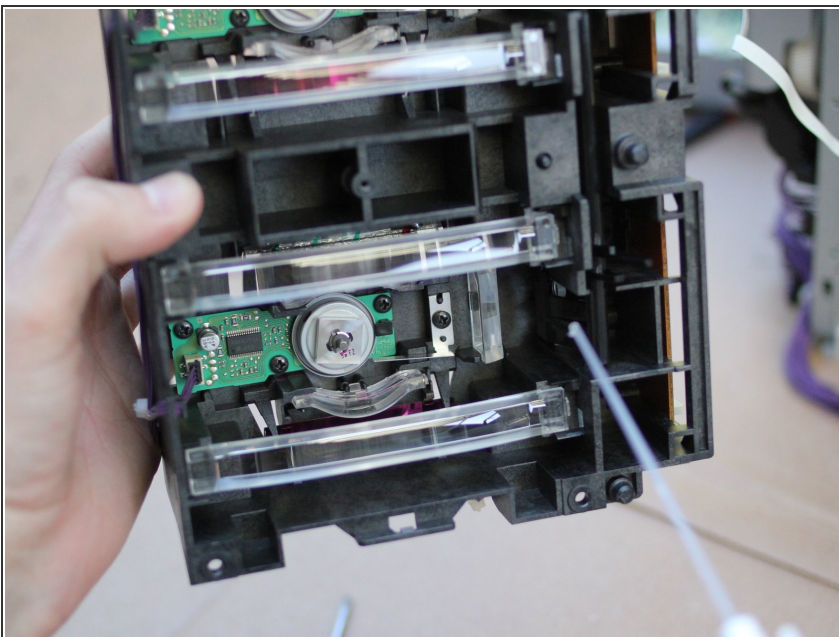
Step 26





 These are lenses, mirrors, and sensors used by the printer to determine how it is printing. Any damage will affect the quality of printing.

- Using a clean cotton swab or lens brush, GENTLY clean the visible sides of every clear or reflective surface you can find.
-  Do not scratch or rub the optics, use a brushing motion instead.
-  For more details on what you are doing and why, refer to the document mentioned in the introduction.

Step 27



- Finish with a light blast of compressed air on all of the surfaces you cleaned.
-  Your printer should now be fully functional! Except for the part where it is disassembled.
-  To reassemble your device, repeat these steps in reverse order.

To reassemble your device, follow these instructions in reverse order.