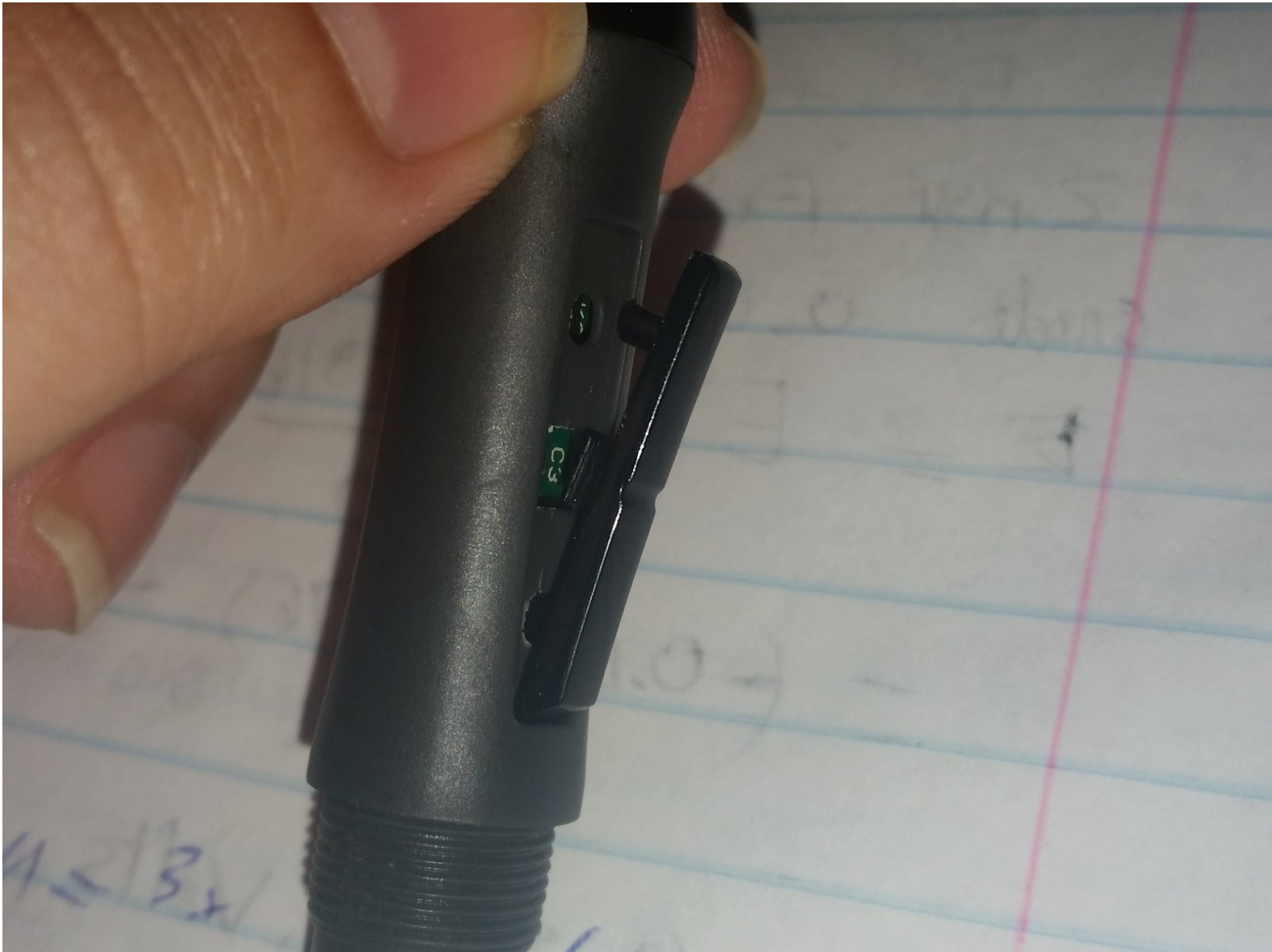




How to fix huion pen 420 Dropped-drawing while hovering

fix huion pen dropped- drawing when hovering

Written By: thlong123



INTRODUCTION

If you drop your huion pen and it starts drawing on its own while hovering, it could mean the inner was pushed in and the pen constantly on. This guide will help you adjust the inner as it supposed to be.

TOOLS:

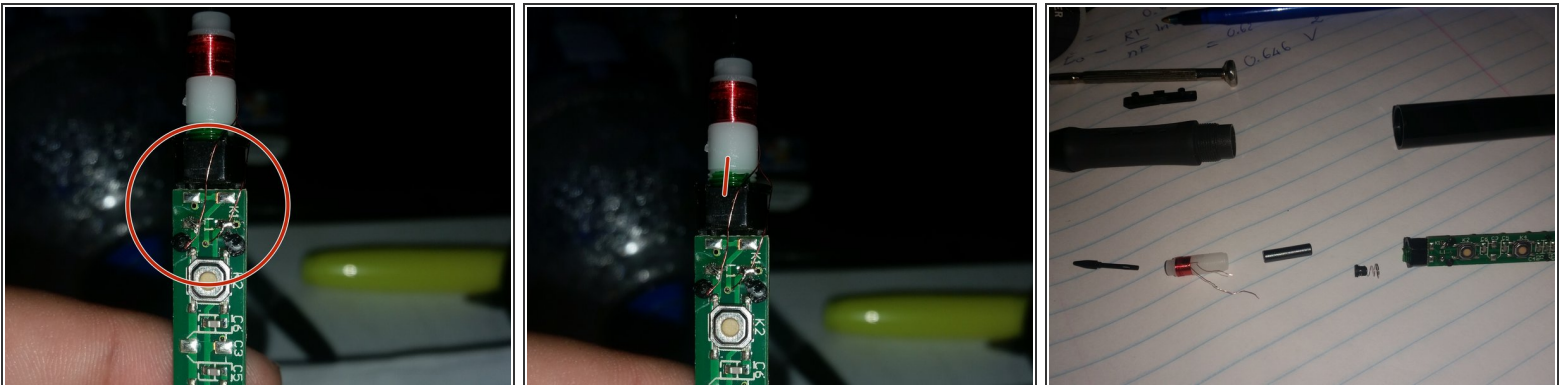
- [Soldering Iron](#) (1)
-

Step 1 — disassemble



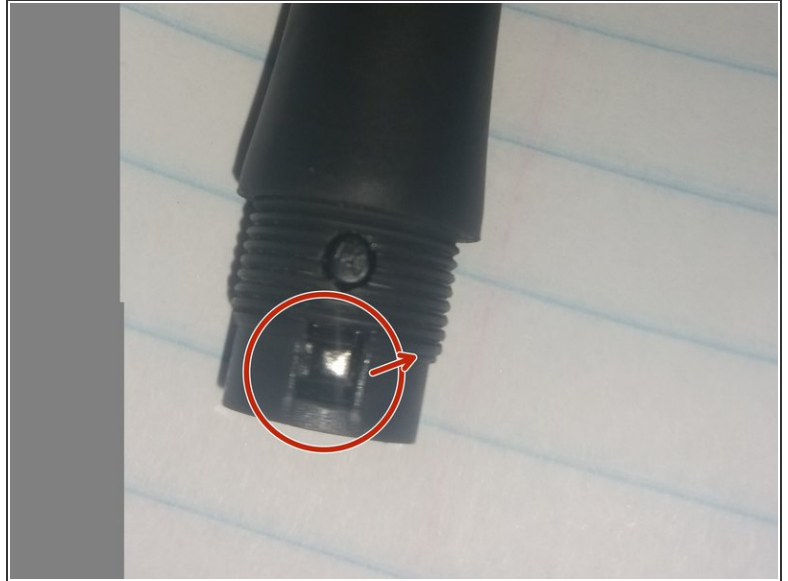
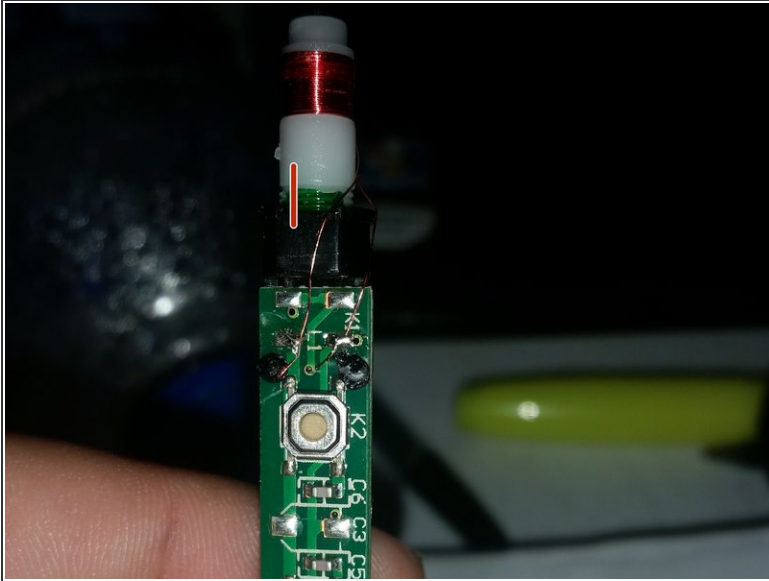
- Remove the buttons first. (use a flat screw driver or something similar) (pic 1)
 - Push the silver tab & black tab down and push upwards to remove the mainboard
 - twist the white cylinder to adjust the height offset of the nub
- i** if you want to fully dissassemble desolder the two copper leads and fully unscrew the while cylinder

Step 2



- Use a soldering iron to remove the wire (remember which one goes where.) (pic 1)
- Mark the white plastic and the black one (so you know when to stop when screw it back) (pic 2)
- Unscrew the white part. Just one or two turns to bring it back to the original position. If you would like to see what's inside, remember which way the spring goes when unscrew the whole thing. It's revrsed in this pic (pic 3)

Step 3 — Reassemble



- Put everything back together. Stop the white plastic at the mark. Put the tip on to see if the spring works (the tip moves freely; turn the white plastic back or forth to get a design pressure sensitivity).
- Remember to pull the metal up or else the pen won't have power. (pic 2)

To reassemble your device, follow these instructions in reverse order.