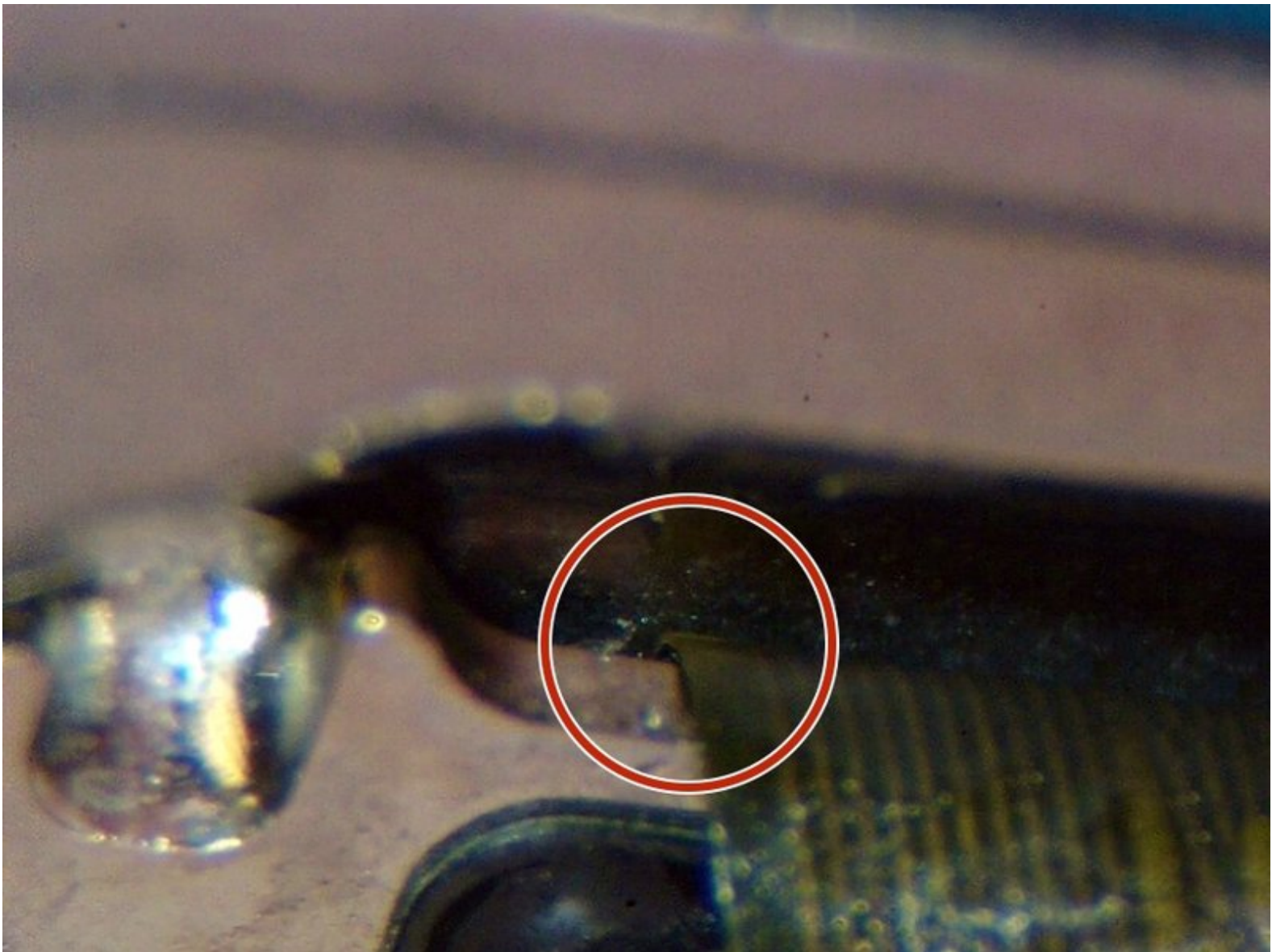




How to fix iPhone 6S/6S+ home button, when home button click does not work.

A walk through for how to fix a specific issue starting to show up with iPhone 6S and 6S+ home buttons. Issue: touch ID works, but the button won't click.

Written By: Jon



INTRODUCTION

There is yet another issue that is starting to be more common among the iPhone 6 and 6S variety phones. The home button no longer registers a click, but the touch ID still works.

Symptoms may include:

- Only registers click occasionally.
- Only works when the home button bracket is not attached to the LCD.
- Only works if the button is held or twisted a certain way.
- Will not register click at all.

3U tools should still be able to recognize the home button, and Touch ID should still work. If they do not, this guide will not fix those problems.



TOOLS:

- [P2 Pentalobe Screwdriver iPhone](#) (1)
- [Suction Handle](#) (1)
- [Spudger](#) (1)
- [Tweezers](#) (1)
- [Phillips #000 Screwdriver](#) (1)
- [iFixit Opening Tools](#) (1)
- [iOpener](#) (1)
- *Recommended, not required*
- [STEREO MICROSCOPE \(Optional\)](#) (1)
- [Soldering Iron](#) (1)



PARTS:

- [iPhone 6s and 6s Plus Home Button Gasket](#) (1)
- [iPhone 6s Plus Home Button Bracket](#) (1)
- [iPhone 6s Plus Display Assembly Adhesive](#) (1)
- [iPhone 6s Home Button Bracket](#) (1)
- [iPhone 6s Display Assembly Adhesive](#) (1)
- [Silicone Modified Conformal Coating](#) (1)
- [Microsoldering Jump Wire \(Insulated\)](#) (1)

Step 1 — Home Button Assembly



- Remove the two 1.9 mm Phillips screws securing the home button bracket.

Step 2



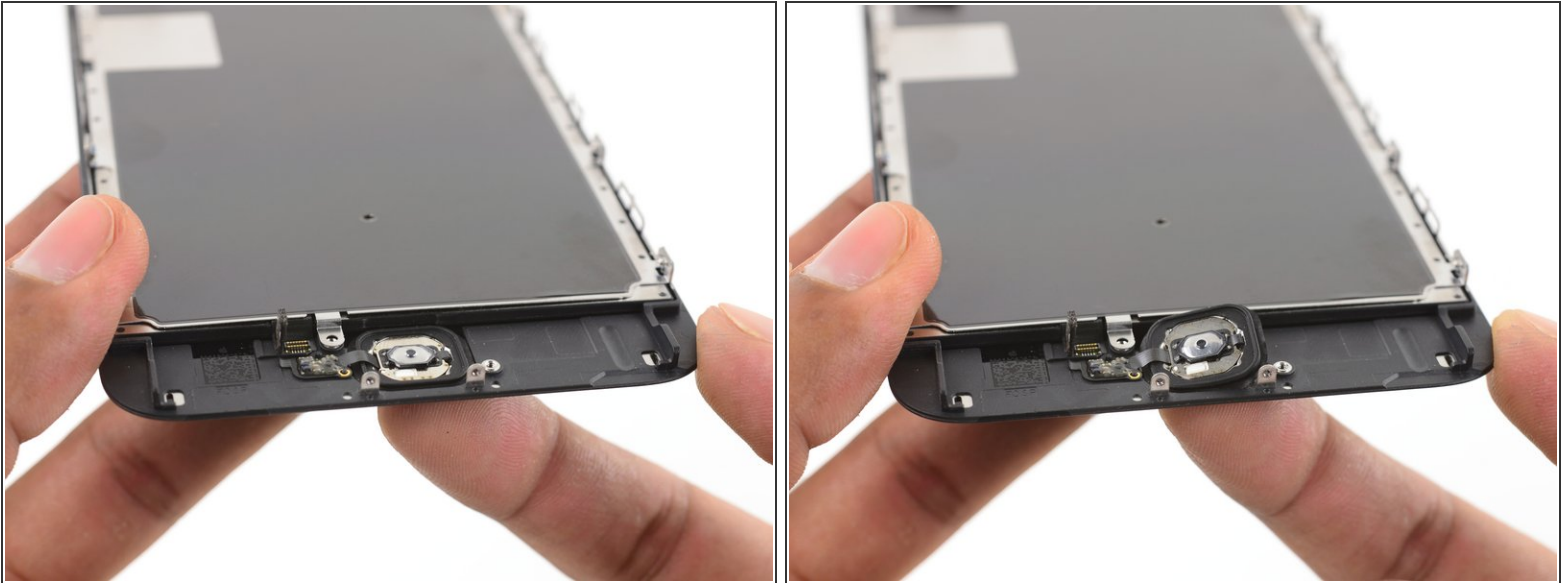
- Remove the home button bracket.


Step 3



- Use the pointed tip of a spudger to disconnect the home button cable from its connector on the display assembly.

Step 4



 The rubber gasket surrounding the home button is very thin and tears easily.

- Apply mild heat (with an [iOpener](#), heat gun, or hair dryer) to soften the adhesive securing the home button gasket.
- Using your fingertip, gently press up on the home button from the front side of the display assembly. Use firm, constant pressure to slowly separate the home button's rubber gasket from the front panel.

Step 5



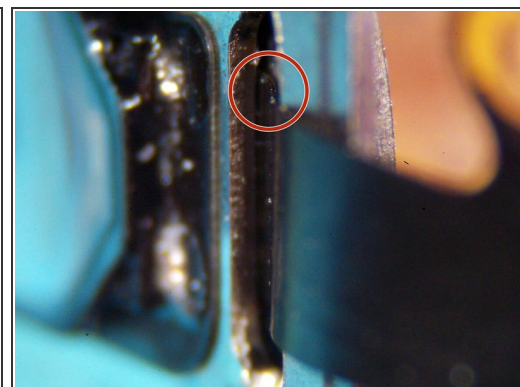
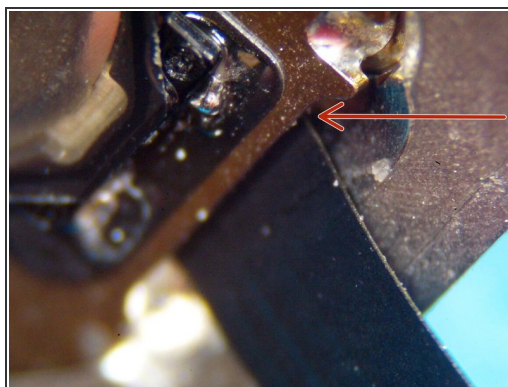
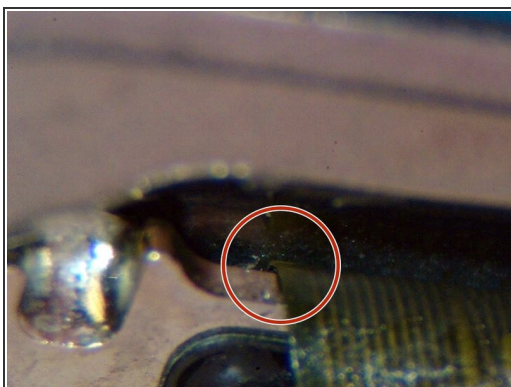
- Use the pointed end of a spudger to pry the lightly-adhered home button flex cable off the display assembly.

Step 6



- Remove the home button assembly.

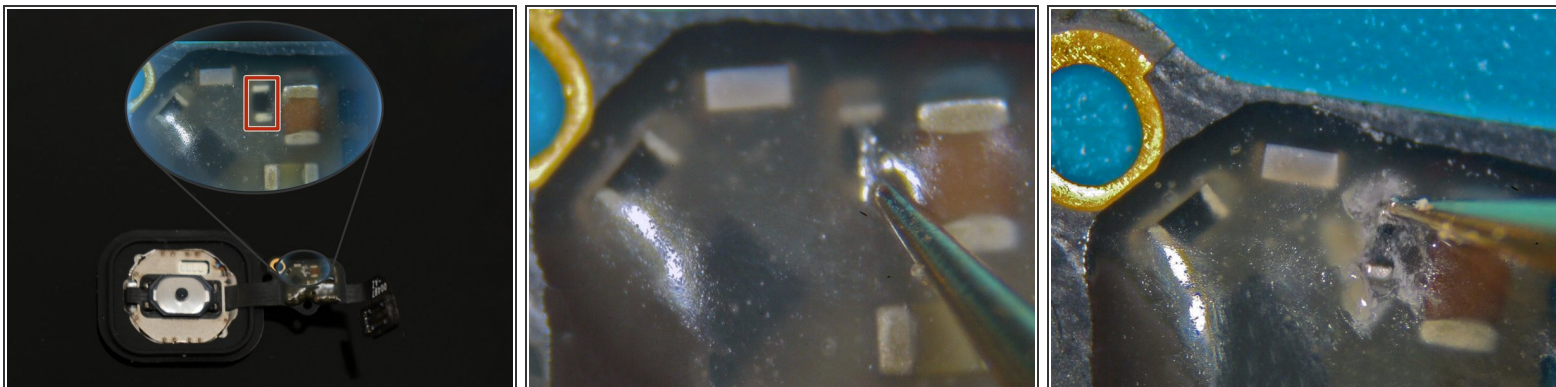
Step 7 — Finding the Cause



i Though this step isn't necessary, here are some images to help you see the cause of the issue

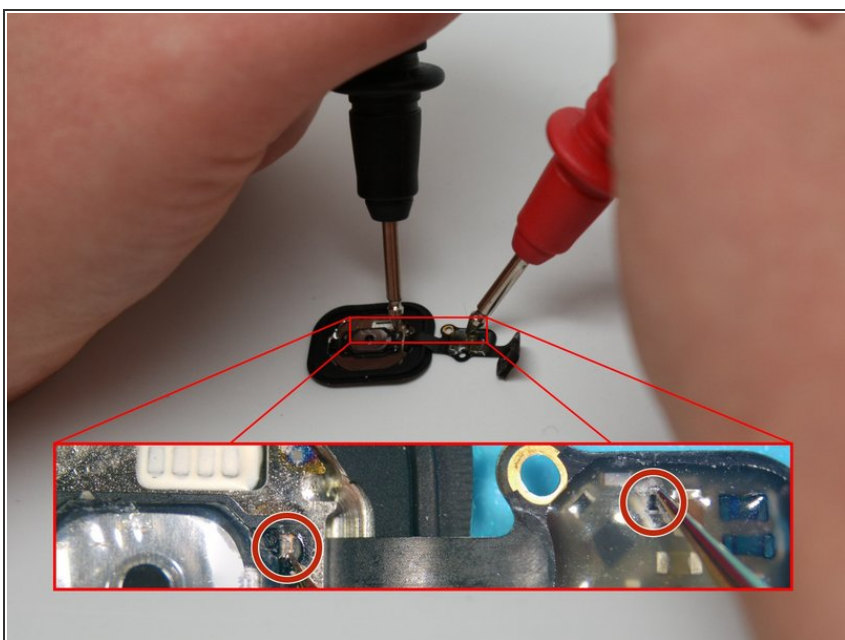
- Here you can see the micro-tear that happens just under the edge of the home button.

Step 8 — Locating the Component



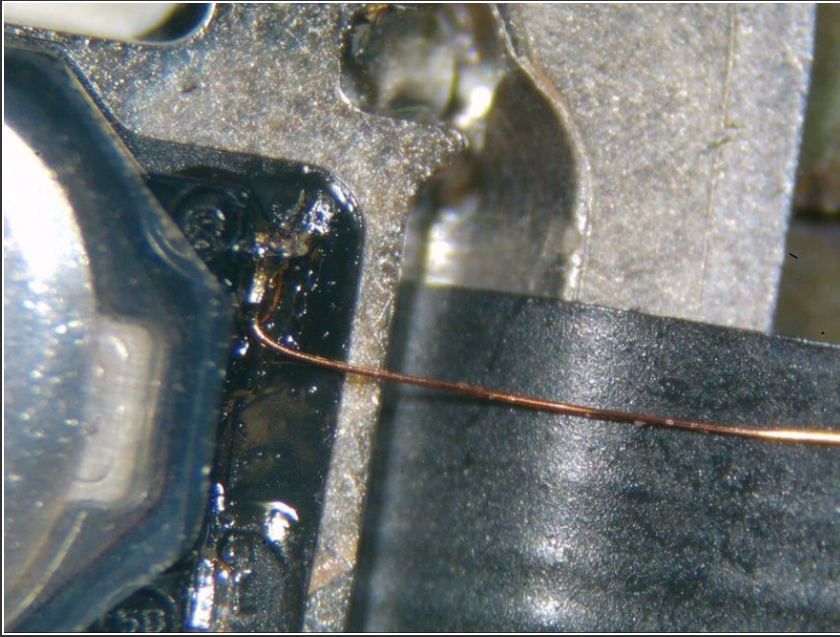
- Find the resistor tied to the home button and remove the protective layer around that resistor.

Step 9 — Verify the Issue



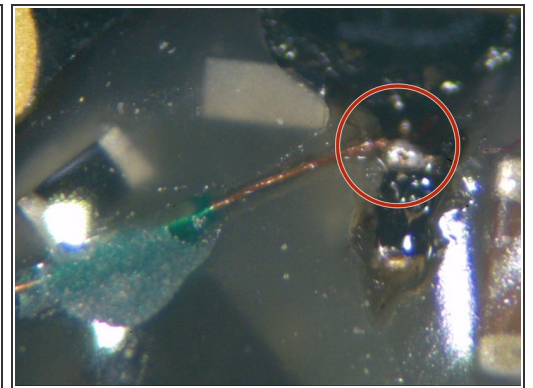
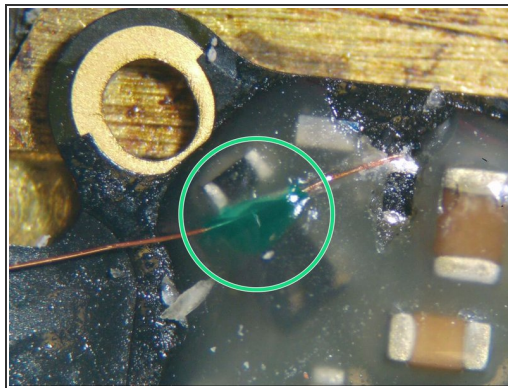
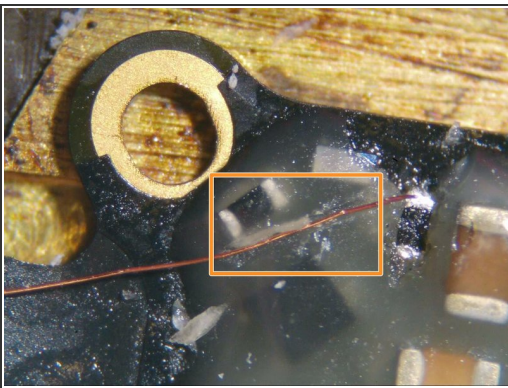
- Test continuity between top part of the resistor and the home button.
- ⓘ If you get constant continuity between these two points, you have another issue and this process will not fix your issue.

Step 10 — Soldering (Part 1)



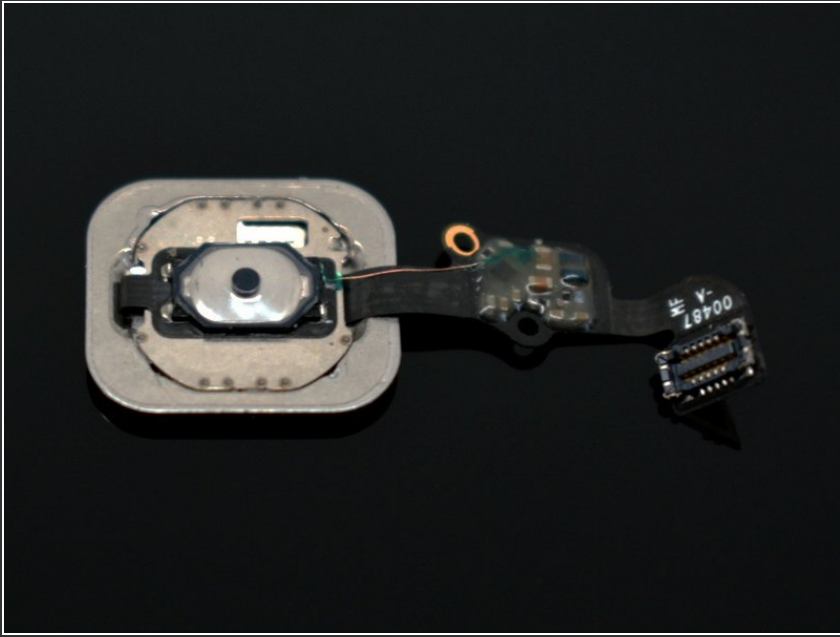
- ✦ Now that you have confirmed the issue, you can fix it by running an external trace between the two components you just tested.
- Solder your wire to the physical part of the home button first.

Step 11 — Soldering (Part 2)



- Guide the wire to the second component
- It is easier to keep the wire in place if you cut part of the glue out in a line. That way you can insert the wire into the cutout to prevent it from moving
- Add some glue or UV resin to keep the wire in place.
- Solder the wire to the top end of the component.

Step 12 — Glue and Assemble



- Add some UV Curing Glue to the solder points.
- ⓘ To be safe, you can place some Kapton tape over the top of the new trace to keep it from moving. Be careful as this new trace is fragile where it isn't glued.
- ★ Follow steps 1-6 in reverse order to re-assemble the device.

After testing the home button and confirming that the repair worked, you can re-assemble your device.