



How to fix the PSP E1000 psp e1000 WHITE SCREEN

Repairing PSP E1000 psp e1000 - WHITE SCREEN

Written By: ZFix



INTRODUCTION

Full video:

This process requires a rework station.

[video: <https://www.youtube.com/watch?v=ILYbv2DBako>]

This is common problem with PSP E1000 caused by [bad solder joints](#). This can be fixed with a bit of preheating.



TOOLS:

- [Pro Tech Toolkit](#) (1)

Step 1 — How to fix the PSP E1000 psp e1000 WHITE SCREEN



- Let's start dismantling.

Step 2



- start by removing the top part and then *gently* "fold" it down to the bottom

Step 3



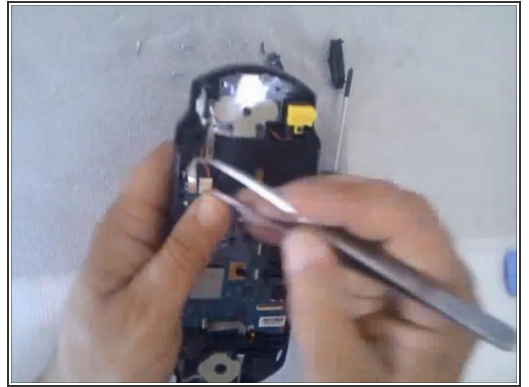
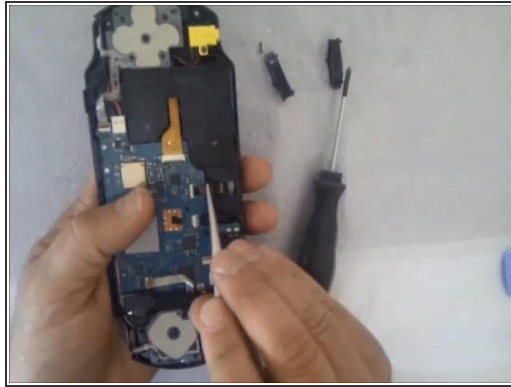
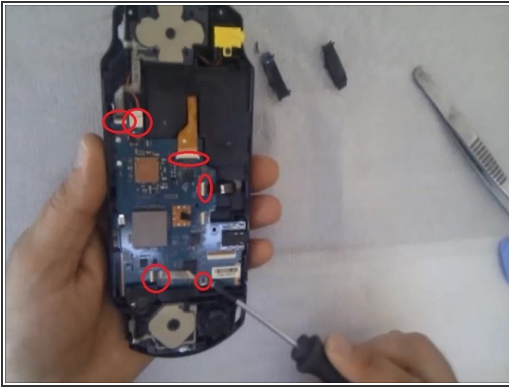
- Disassembling the screen.

Step 4



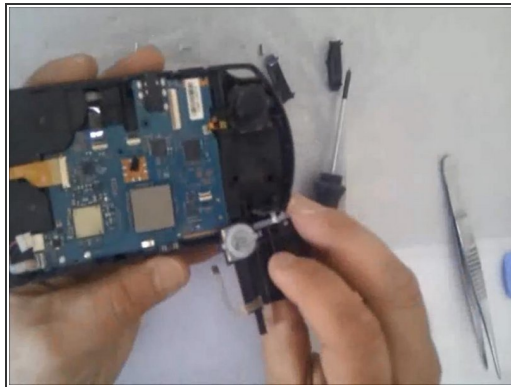
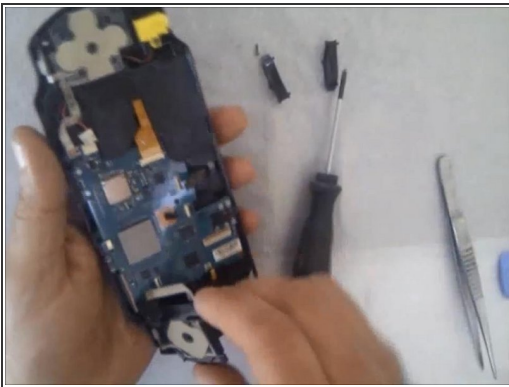
- Remove this screw.

Step 5



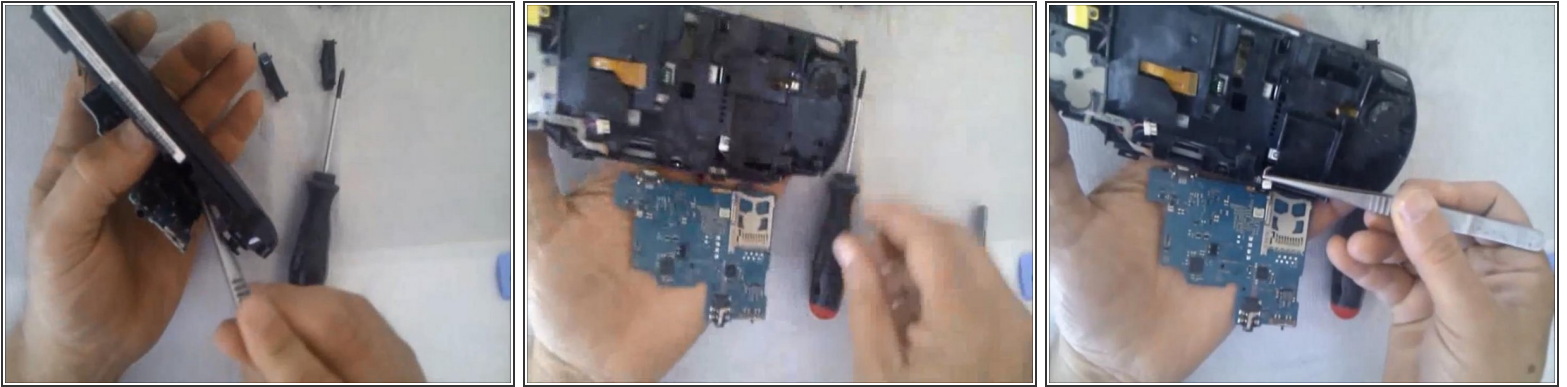
- Insert wisdom here.

Step 6



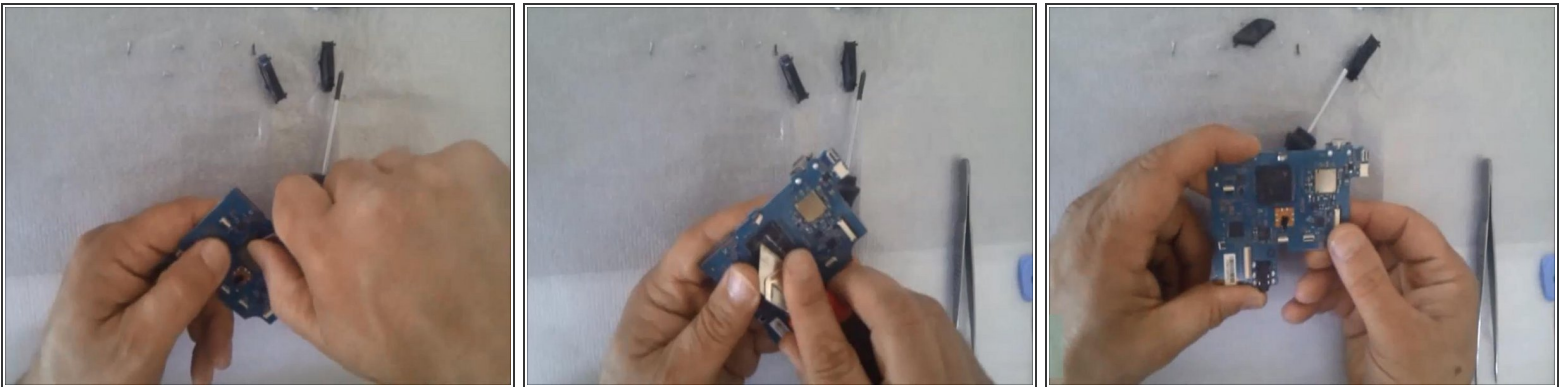
- Insert wisdom here.

Step 7



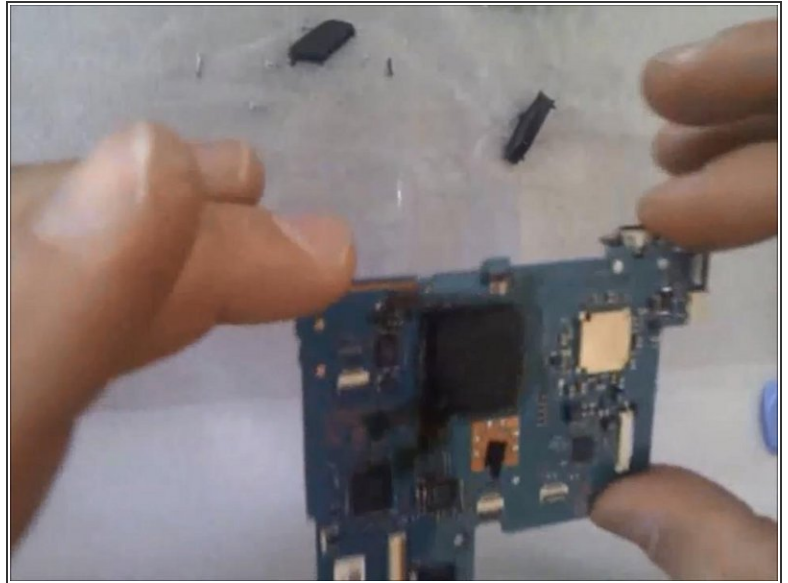
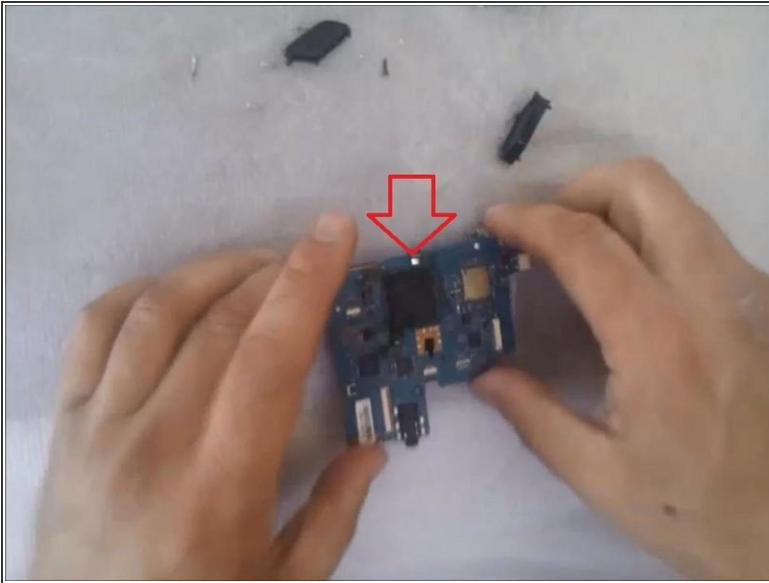
- **Carefully disconnect the battery connector!**

Step 8



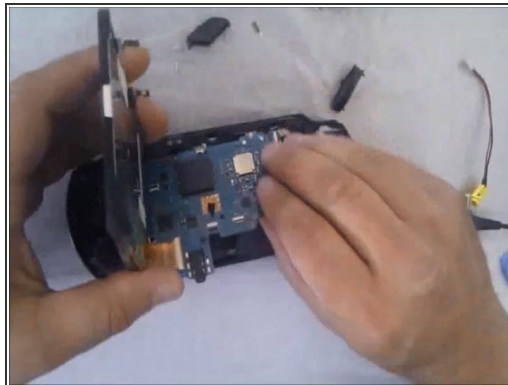
- **Remove the thermal tape.**

Step 9



- You must resolder main processor with Rework Station (this is special equipment).

Step 10



- Cleaning and assembling.

To reassemble your device, follow these instructions in reverse order.