



How to flash Lenovo IdeaTab A1000L

Flashing the default firmware on a A1000L

Written By: Filip Velickovski

Smart Phone Flash Tool (Runtime Trace Mode)

File Action Options Window Help

Download Read back Memory Test

Format Firmware -> Upgrade Download Stop DA DL All With Check Sum

Download Agent		Download Agent	
Scatter-loading File		Scatter-loading	
Authentication File		Auth File	
Certification File		Cert File	
Nand Ubi File		Nand Ubi File	

name	region address	begin address	end address	location

0%

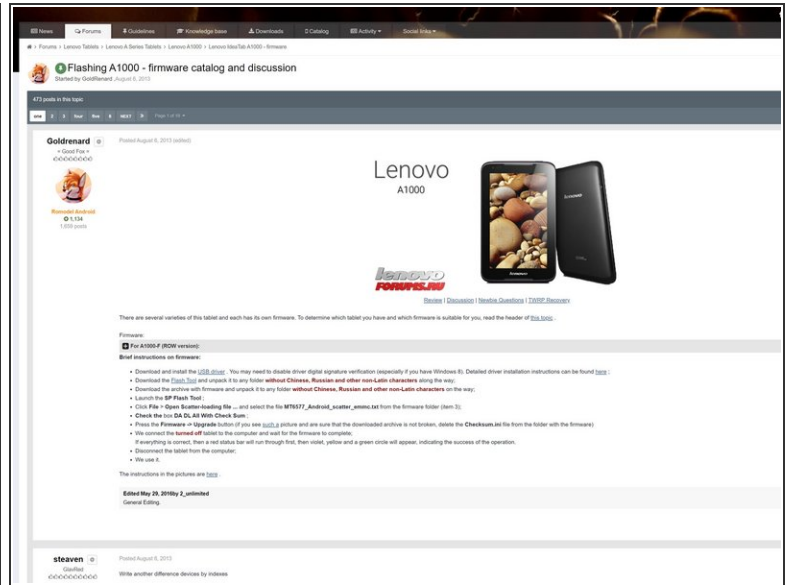
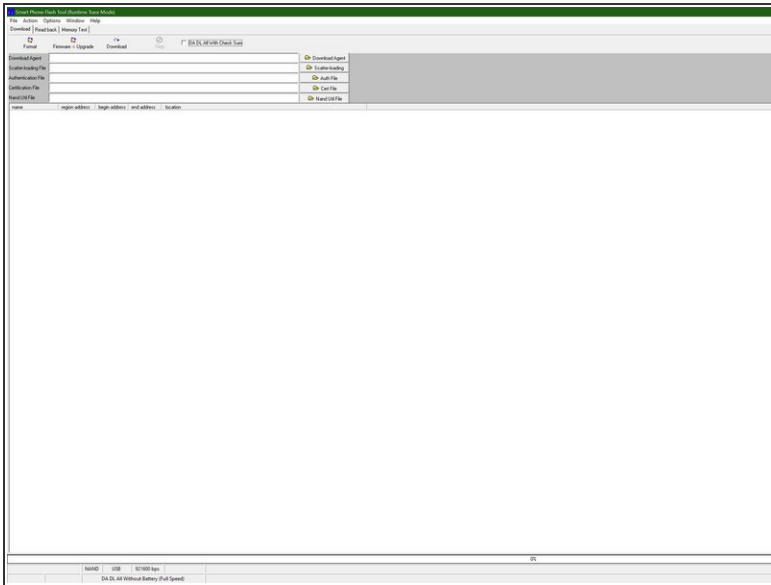
NAND	USB	921600 bps	
DA DL All Without Battery (Full Speed)			



TOOLS:

- [USB-A to USB-mini](#) (1)
- [PC](#) (1)
- [internet conection](#) (1)

Step 1 — Welcome

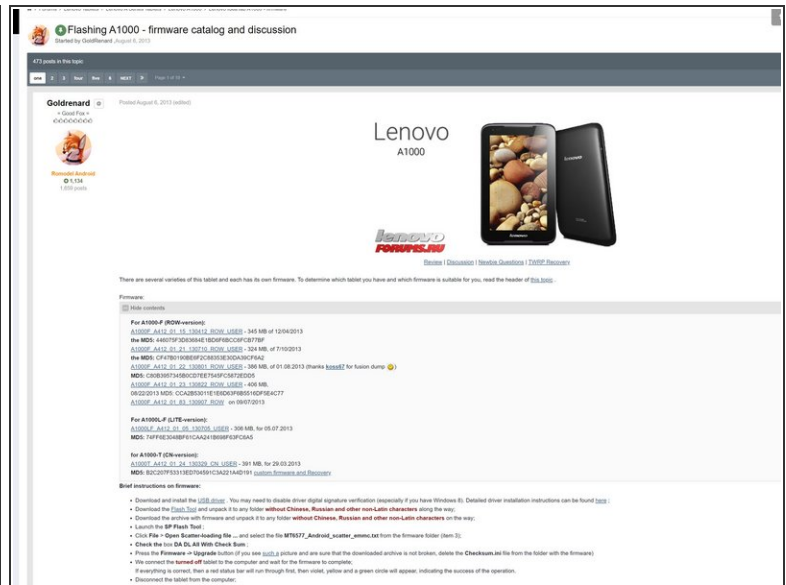
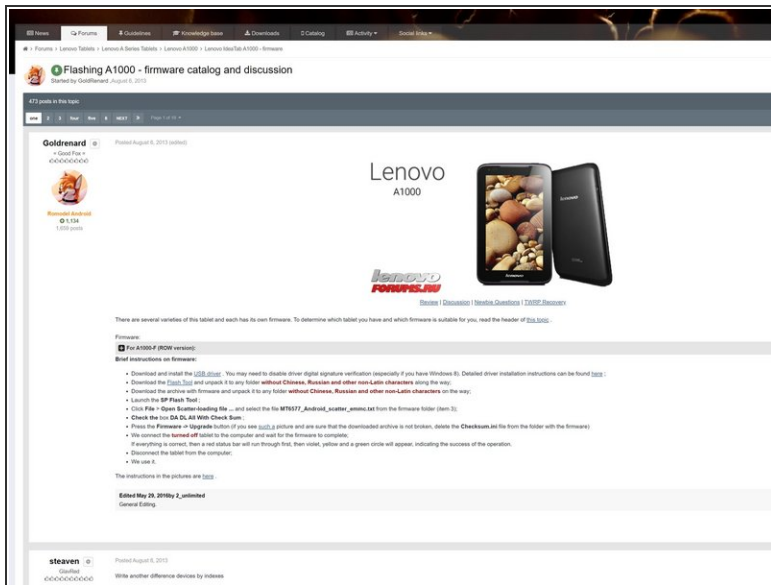


- Requirements:
- A internet conection
- A charged A1000
- A usb data cable
- And most importantly a windows pc



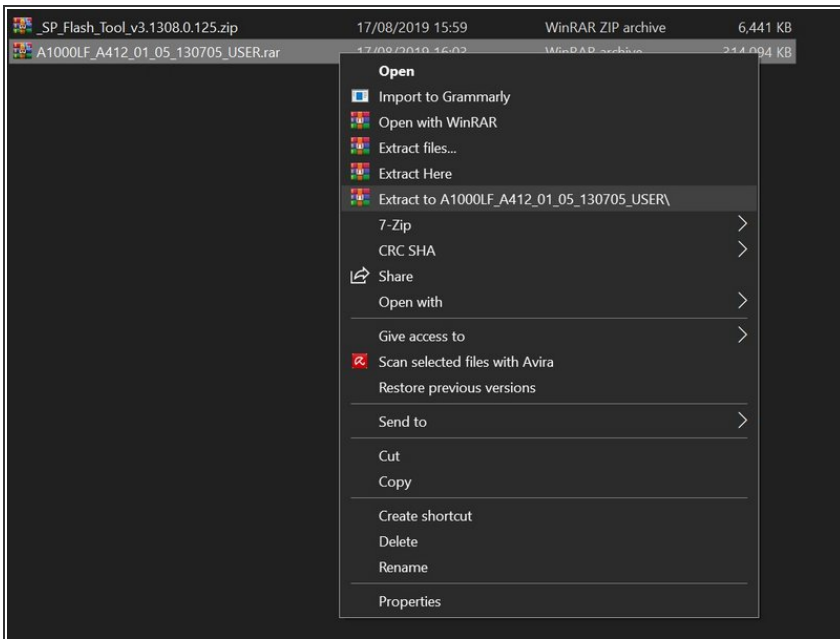
Warning: don't do this if your tablet is already working or you modified the boot loader ,you can brick your tablet .

Step 2 — Finding Firmware.



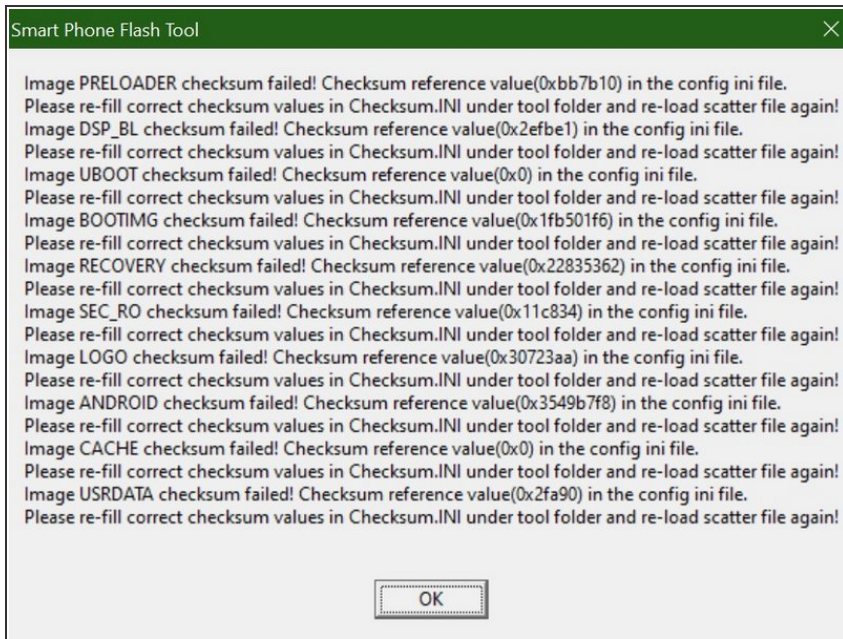
- Go to <http://lenovo-forums.ru/topic/1855-%D0%B...>
- And translate the page. It should be like this <--
- Find your model number on the list of firmware and download it.
- Download the flash tool <http://lenovo-forums.ru/Files/OS/Tablets...>
- And the usb driver <http://lenovo-forums.ru/Files/OS/A390/MT...>
- Install the driver.


Step 3 — Unpacking the firmware



- Unzip the firmware and the flashtool in any folder only with latin characters.

Step 4 — Flashing the firmware



 **YOU CAN BRICK YOUR TABLET ON THIS STEP!** I am not responsible for any bricking of a tablet.

- open Flash_tool.exe. and select File > Open Scatter-loading file ... and select the file MT6577_Android_scatter_emmc.txt from the firmware folder
- Check the box DA DL All With Check Sum and Press the Firmware -> Upgrade button
- If this <-- happens check the firmware and delete checksum.ini from the firmware and try again
- Plug in your tablet turned off
- First wait if you get a green circle after flashing you have a successfully flashed tablet.

Congratulations you have a working tablet