

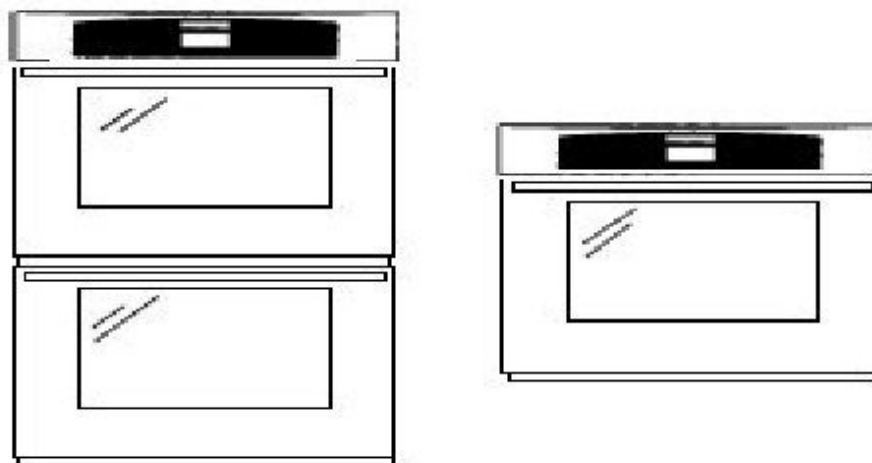


How to get the lower oven of a Thermador 272US to operate

This guide is a simple way to get the completely dead lower oven of a Thermador 272US to work again.

Written By: RichB89600

Thermador Built-In Ovens



Models:
C302/C272
C301/C271

INTRODUCTION

Randomly, mostly after a power outage, the Thermador 272US will not recognize the lower (of 2) oven(s) at all. Basically, it acts as though there is only one oven.

Many other helpful guides suggest that the thermal switch, atop the lower oven, needs to be reset. I'd try this first.

But, if that doesn't work (and it doesn't for me), then you might have to replace the relay board. I'm guessing that is in the thousands-of-dollars range.

I found that the relay board has unsealed, open-to-dust-and-heat miniature relays. Whenever (and it happens too often) the lower oven seems dead, air cleaning and "flicking" those relays brings the dead lower oven back to life.



TOOLS:

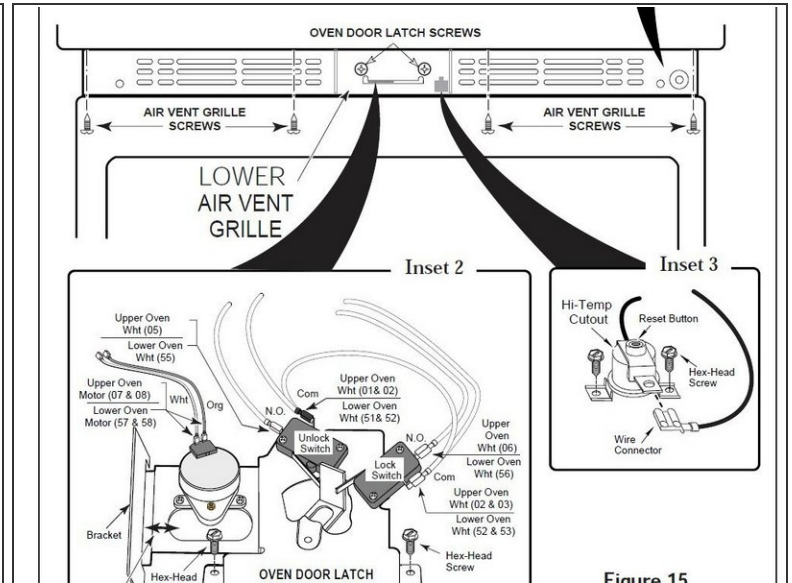
- [Phillips #1 Screwdriver](#) (1)
 - [Can of compressed air cleaner](#) (1)
-

Step 1 — TURN OFF AC AT THE CIRCUIT BREAKER



- TURN OFF POWER AT CIRCUIT BREAKER! You do NOT want to light yourself up!

Step 2 — Before you try this fix, try resetting the thermal cutoff



- A lot of sites suggest that it may be the thermal cutoff that has disconnected your lower oven. Attached is a link to a PDF of a different Thermador oven, but the thermal cutoff is located in exactly the same place. The thermal cutoff typically cuts out after self-clean of the bottom oven (don't do that!)
- [Check pages 48-49 of this link for location of thermal cutoff reset](#)

Step 3 — Begin to remove the control/display panel



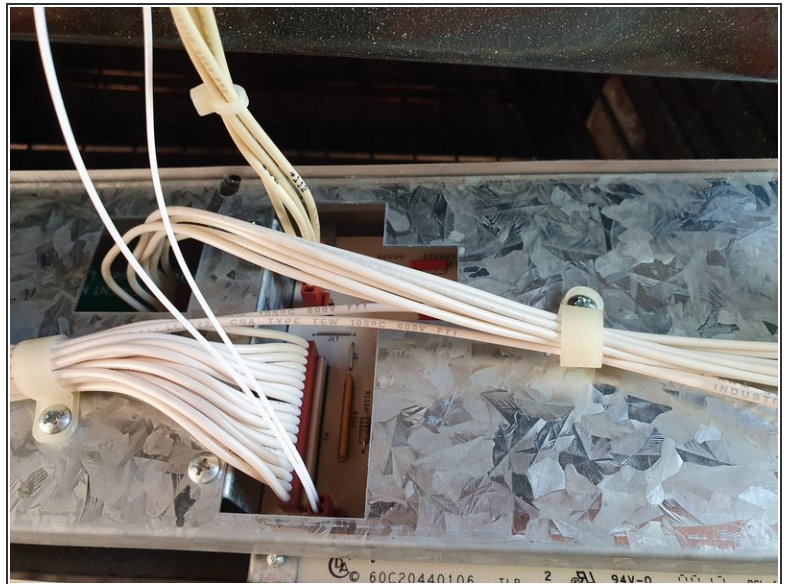
- You are going to remove the control and display panel. To do so, open the upper oven door. Looking up at the bottom of the control/display panel, find 4 black sheet metal screws and one silver one (in the center).

Step 4 — Remove the 4 black sheet metal screws



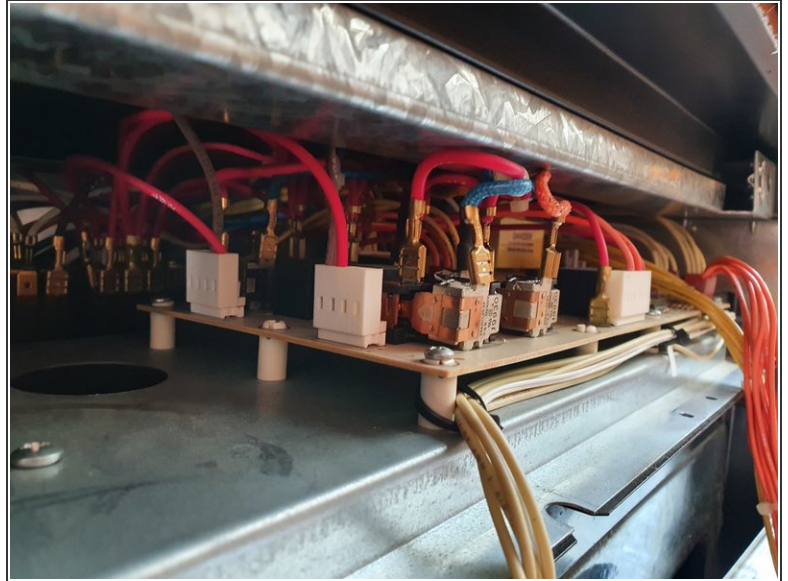
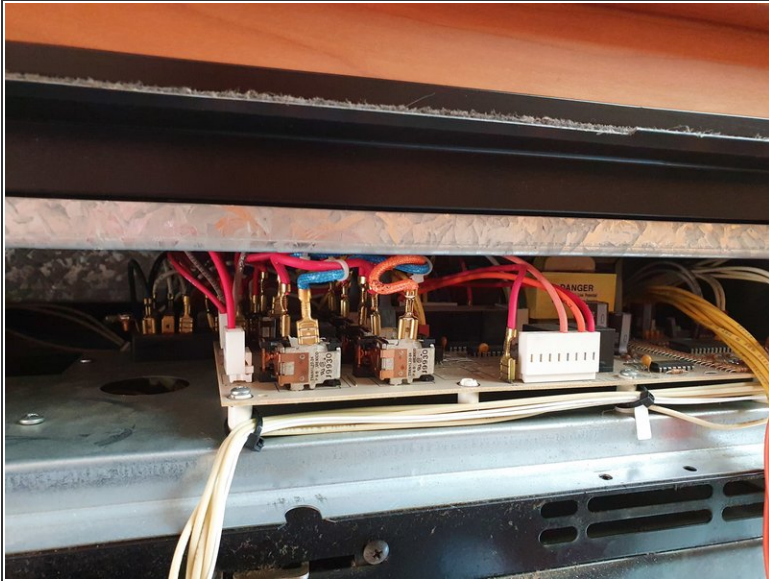
- Remove **ONLY** the 4 black sheet metal screws with a phillips head screwdriver. Don't unscrew the silver one in the middle.

Step 5 — Detach the control/display panel (leaving wires intact)



- Pull (gently, but not too gently) the stainless steel control/display panel toward the front, and slightly up. In addition to the 4 black screws you removed, it is held by 2 compression posts, one on each side. If you pull hard enough (but not too hard), the control/display panel will come out, held only by wire harnesses.

Step 6 — Find the relay/control board



- You will see behind where the control/display panel was, a board with small, uncovered relays. (Why they're uncovered and susceptible to dust on a multi-thousand \$ range is a mystery!!)

Step 7 — Air clean/tweak the relays on the relay board



- Carefully hanging the control/display board (or having someone else hold it), spray air onto as many of the little relays as you can. (Some are pretty far back). Also, with your fingers, try to flip the relays a few times. They are pretty close and have short movement. Don't push too hard or you may bend the contacts.
- --- Be careful not to disconnect the wire harnesses from their connectors to the relay/control board ---

Step 8 — (Optionally) Test your fix



- At this point, with the control/display board hanging, I turn the circuit breaker back on just to test. Be careful here though. Open the bottom oven door. If the light goes on (and you'll hear a relay), then you've fixed it. But, **GO BACK AND TURN OFF THE CIRCUIT BREAKER** for safe reassembly.
- --- Be careful not to let the wire harnesses unplug themselves from their connectors on the relay board. ---

Step 9 — Reassemble the Oven



- Line up the control/display panel with the pins and push gently toward the body of the oven and it should "snap" into place.
- Replace the 4 black screws in the bottom of the control/display panel.

Step 10 — Why does this work?



- So, presumably you've fixed this. I can't really explain WHY you've fixed this, because the Thermador service manual doesn't indicate these relays would be relevant, but, "if it works, don't fix it"

When you are done, presumably your lower oven will once again work.