



How to install Ubuntu on the HP Stream 13

A quick guide on how to get Ubuntu on your Stream 13. This guide will assume you've already made a bootable USB drive.

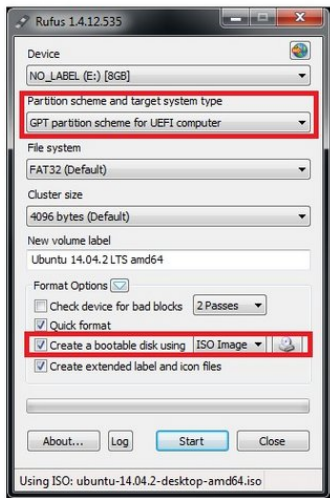
Written By: Kevin Fessler



INTRODUCTION

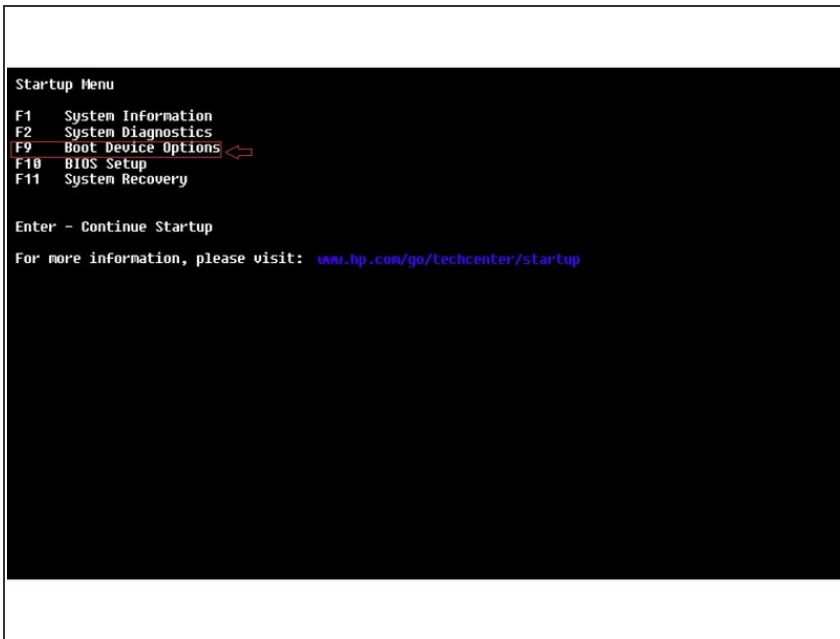
Here we will quickly go through the process of installing Ubuntu on this computer. It's a quick and easy process that shouldn't take you more than 20 minutes to complete!

Step 1 — Create a bootable USB drive



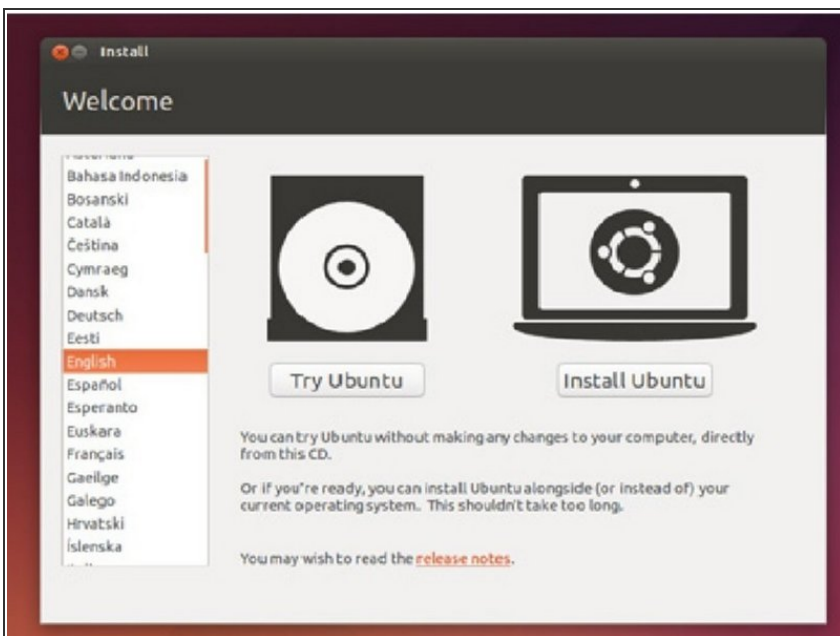
- Make sure that you make your drive UEFI compliant, otherwise you will have to turn on "Legacy boot" in the BIOS.
- **Rufus** is a good tool to make a quick USB drive. Pick up the freeware tool here: <https://rufus.akeo.ie/>

Step 2 — Reboot your computer and access BIOS



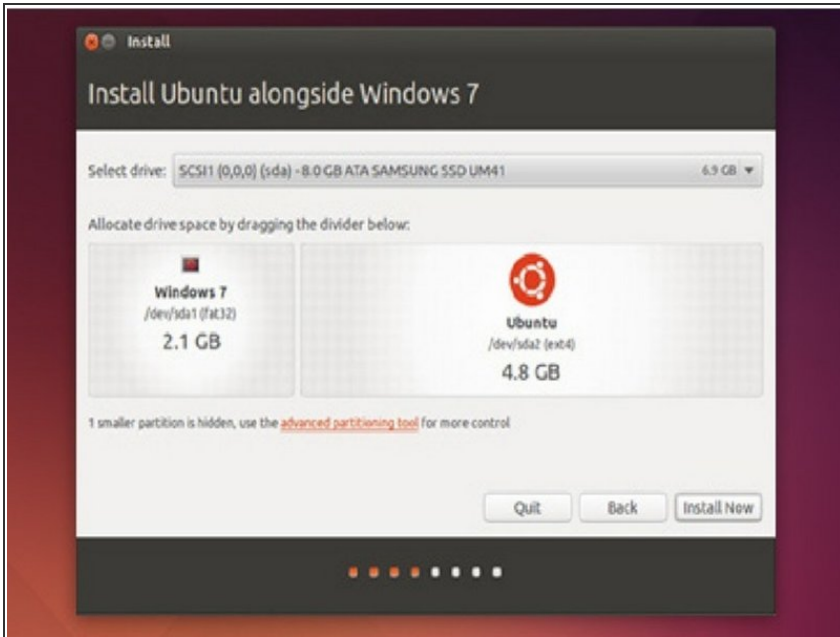
- Here is where the tapping begins! Tap repeatedly on the **ESC** key. If you start seeing the Windows logo you didn't tap fast enough, turn off your computer and try again.
- You should "Startup Menu" press on F9 to get to the *Boot Device Options*. From there, select your flash drive using the arrow keys and press **Enter**.

Step 3



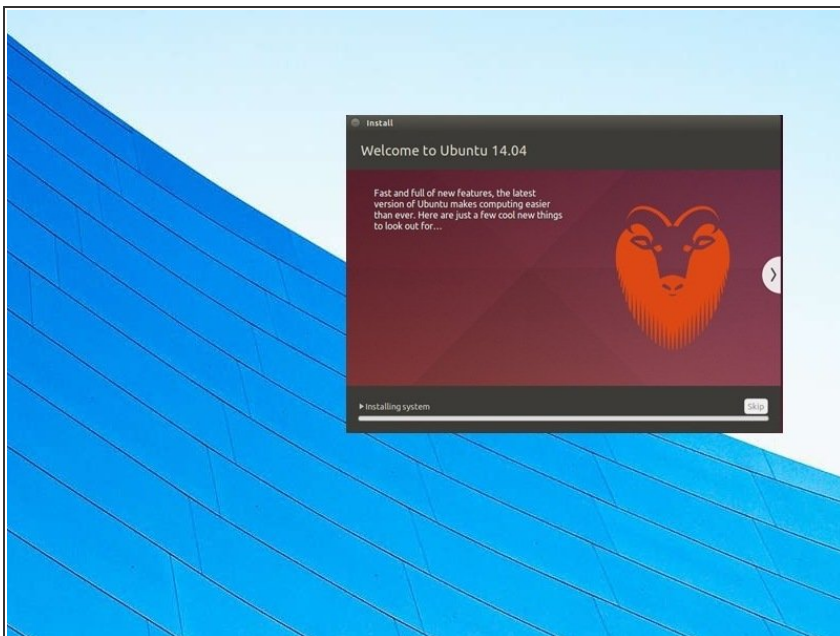
- Wait for Ubuntu to load. When you get to this screen press install Ubuntu.
- It's been known on this laptop for Ubuntu to periodically flash until it finds the right display input. If your trackpad is responsive try restarting the computer.

Step 4



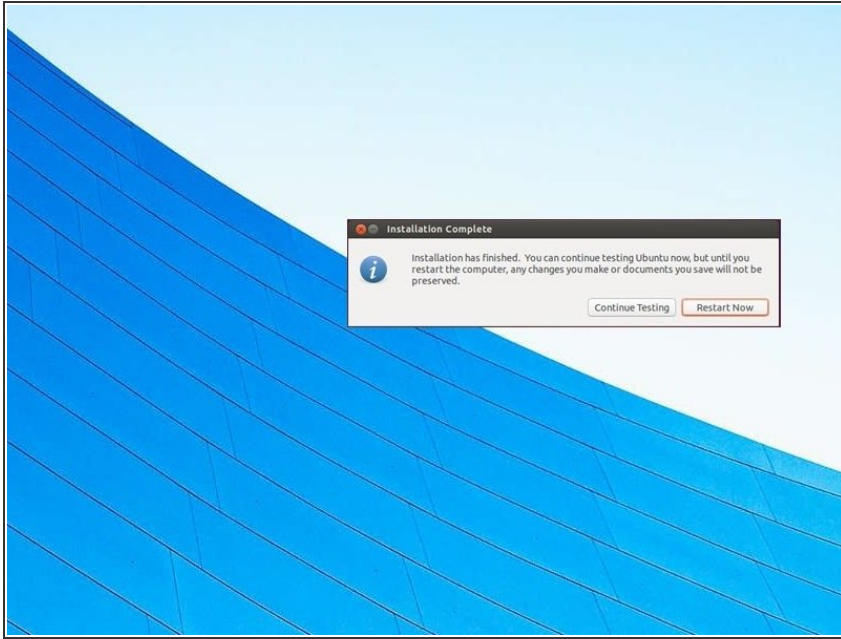
- Move the slider until you find the right amount of space you want to give Ubuntu. Plan for about a 5-6 GB installation at the minimum.

Step 5 — Wait



- Wait until Ubuntu has finished installing and copying new files.
- Do not remove the USB drive at this time.

Step 6 — Restart and Enjoy!



- Once all the files have finished copying, you're free to restart your computer.
- Unplug the USB installer drive only *after* your computer restarts or when the computer tells you that you can. Files may still be accessed up until that time.

To reassemble your device, follow these instructions in reverse order.