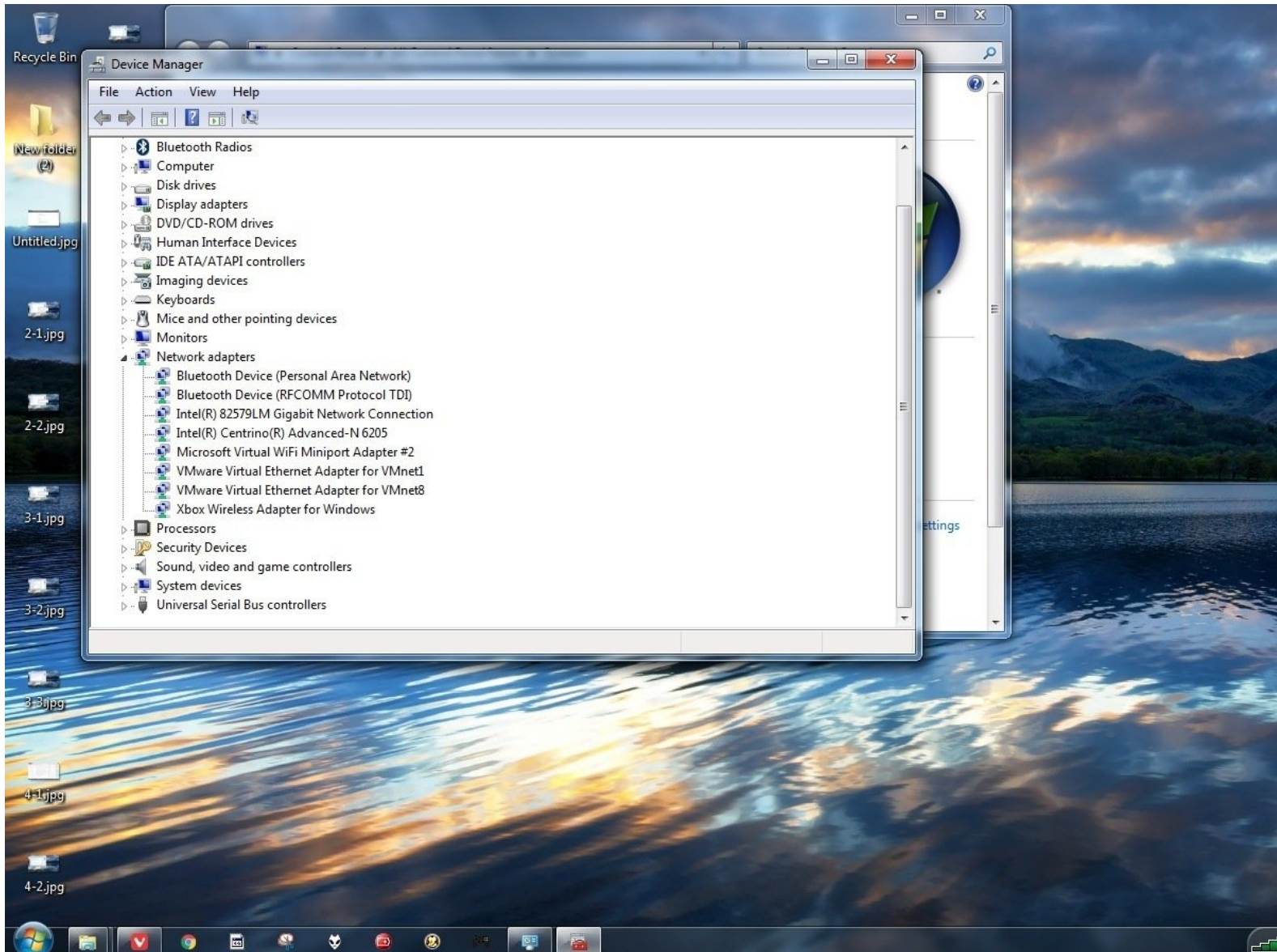




How to install the Xbox One Model 1713 Wireless Receiver in Windows 8.x

If you are trying to use an Xbox Wireless Receiver in Windows 8.x, installation issues are common.
This guide will show you how to fix the issue.

Written By: Nick



INTRODUCTION

If you purchased a Xbox Wireless Receiver for Windows and are wondering how to use it in Windows 8.x, this guide will show you how to install the drivers. Since Microsoft is pushing Windows 10 as hard as they need to (despite many users not wanting it or preferring to wait), problems like this will come up.

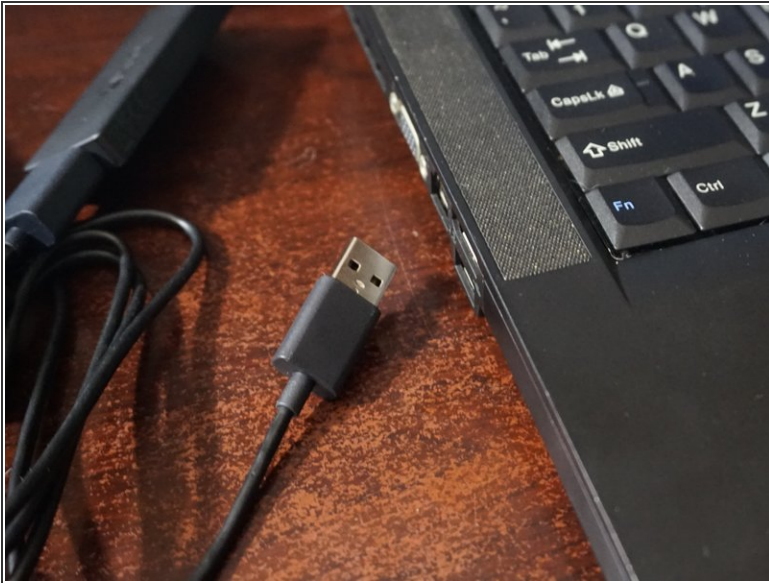
Since Microsoft wants to make this as hard as possible on Windows 7/8.x users, this guide will show you how to manually install the driver and get it working. ***IMPORTANT: While the screenshots show Windows 7, I will not be assisting with Windows 7 driver installs after 1/14/2020.***

****WARNING: WINDOWS 7 IS END OF LIFE AS OF 1/14/2020. I WILL NOT SUPPORT WINDOWS 7 USERS. This procedure will work, but it is entirely unsupported by the guide author going forward.***

Guide notes

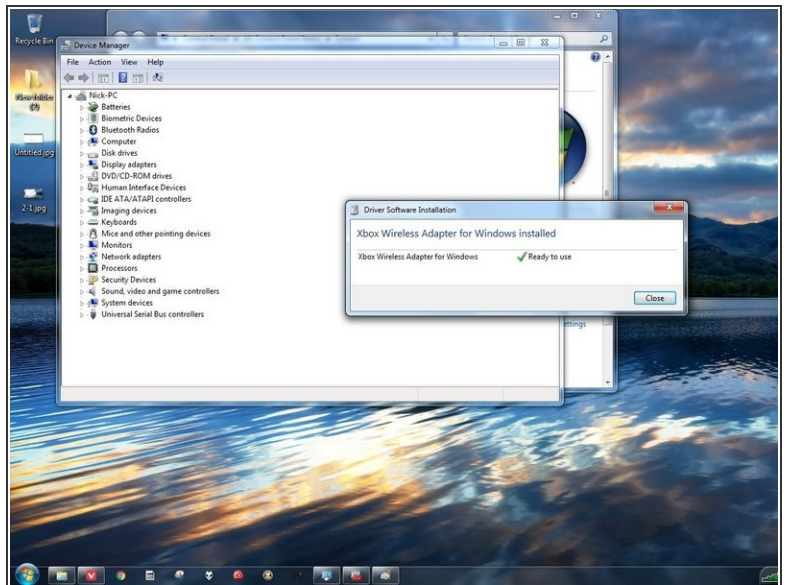
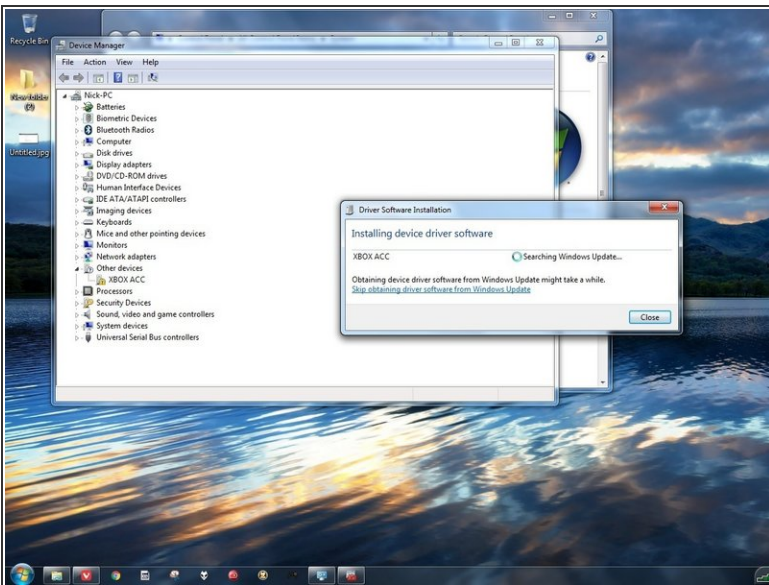
- In most cases, the receiver will pick up the driver correctly, but needs encouragement. However, I have included manual installation instructions for situations where this does not happen.
- ***Windows 10 users: Refer to the [Windows 10 guide](#).***

Step 1 — Plug the receiver in



- Plug your Xbox Wireless Receiver into your PC. ***Before going further into this guide, see if the driver installs automatically.*** If it does not, continue reading this guide.

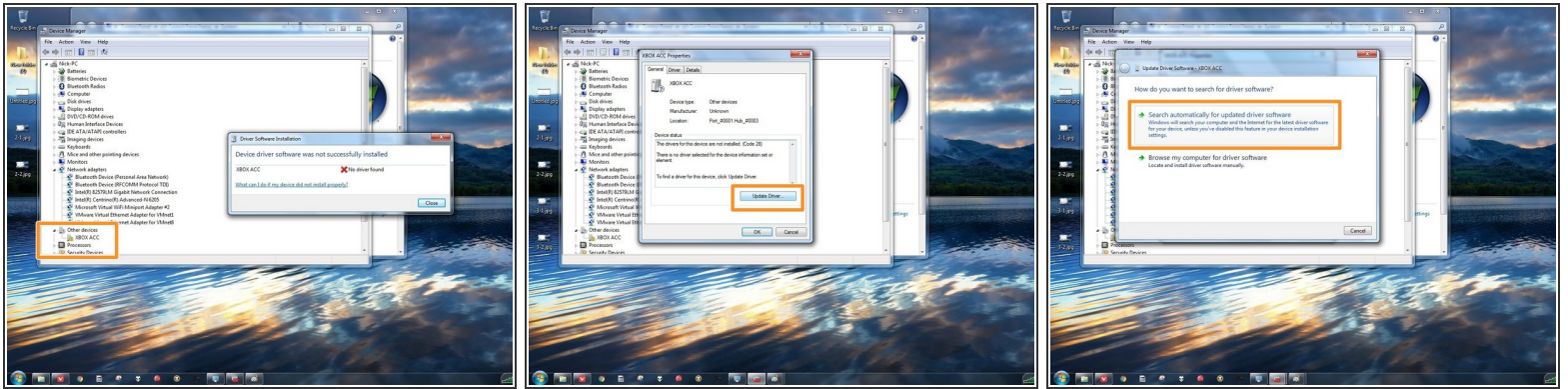
Step 2 — Driver installation (Windows Update)



⚠ Try this method first. Microsoft has pulled the driver from the public Update catalog.

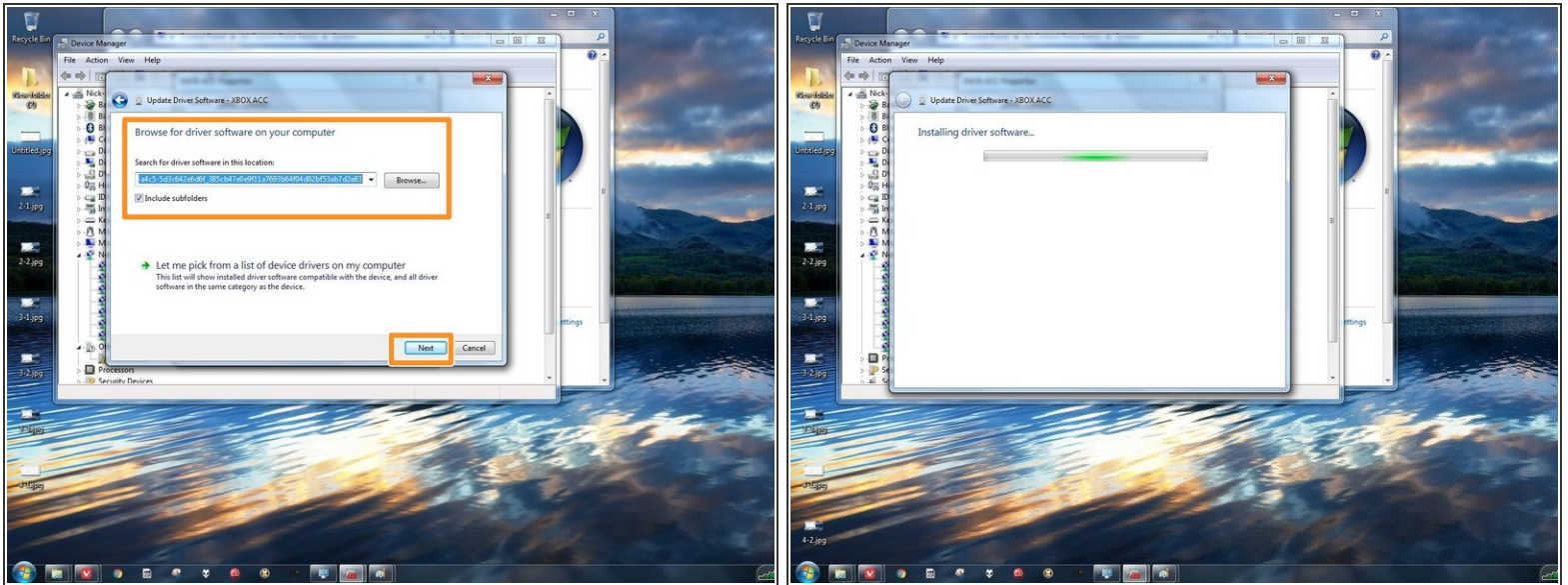
- Before opening Device Manager, see if it installs automatically. If this does not work, the driver will need to be installed manually.

Step 3 — Driver installation (Device Manager automatic driver search)



- Open Device Manager. The best method varies by version of Windows.
- **Windows 7:** To open Device Manager in Windows 7: Open the start menu and right click **Computer**. Select **Manage** and locate Device Manager.
- **Windows 8.x:** Right click the Windows logo in the taskbar. Select **Device Manager**.
- Double click **XBOX ACC** and verify you get a **Code 28** error. Click **Update Driver** and try **Search automatically for updated driver software**.

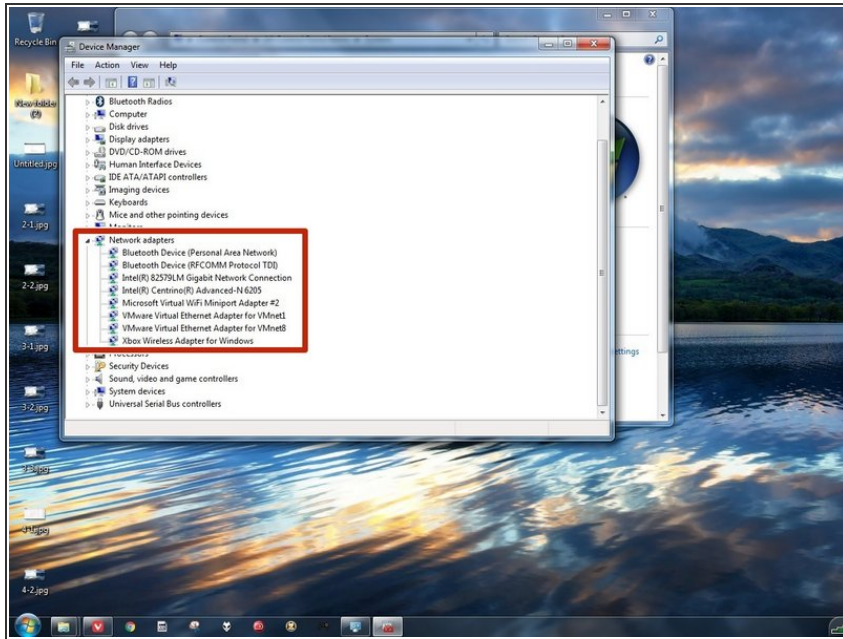
Step 4 — Driver installation (Manual loading)



⚠ Refer to the guide comments for Windows 7/8.x 32-bit .cab files.

- If the automatic installation does not work, download the driver from a [Microsoft Update Catalog backup \(64-bit only\)](#). Use this file as-is or unzip it with [7Zip](#).
- Select **Browse my computer for driver software**.
- Locate the folder where the driver is downloaded, and select **Copy address as text**. Paste the location into the box under **Search for drivers in this location**. Click **Next**.

Step 5 — Driver installation (Verification)



- To verify the driver was installed correctly, check under **Network Adapters**. If the driver was installed correctly, it will show up here.

To reassemble your device, follow these instructions in reverse order.