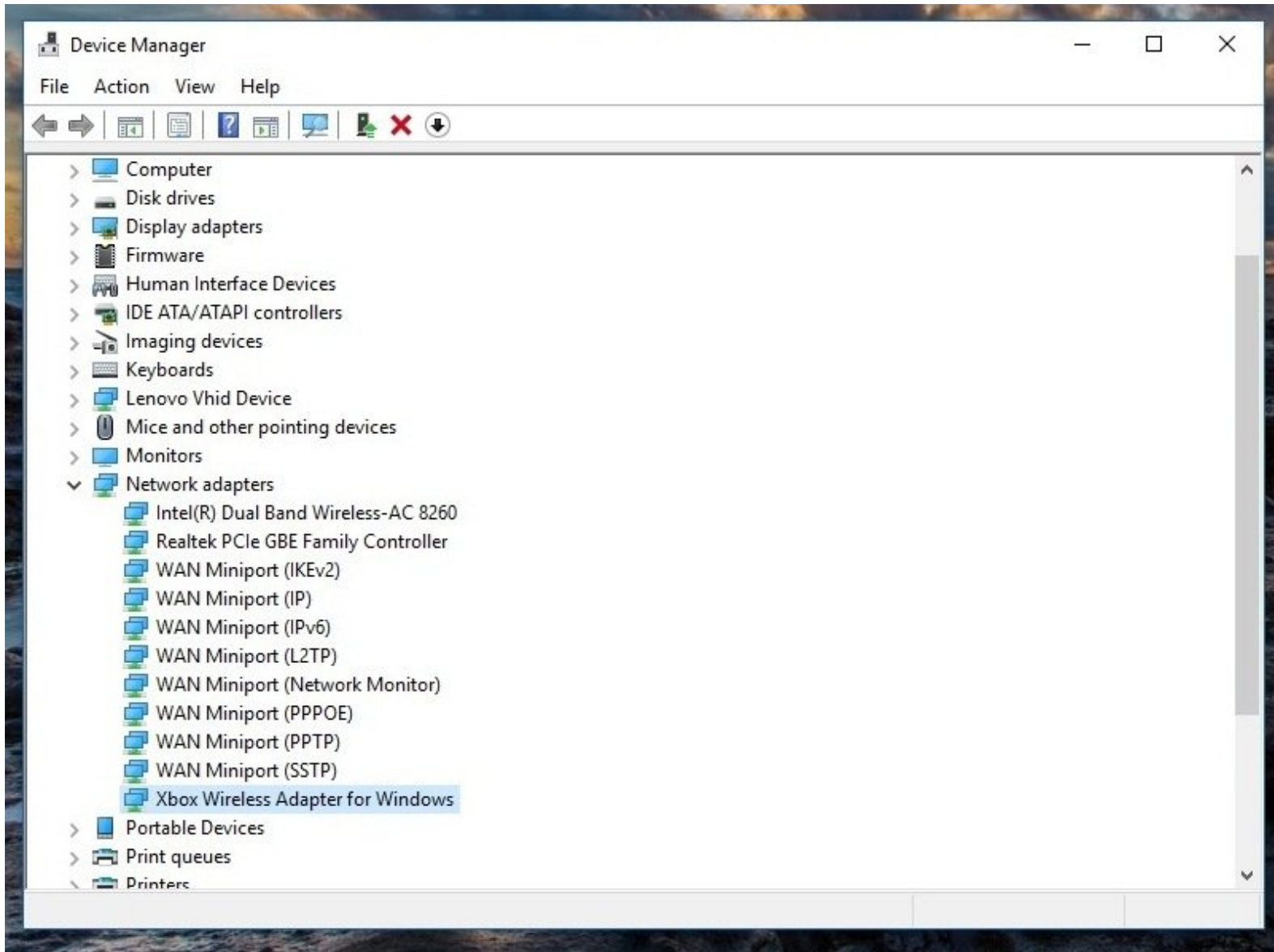




# How to install the Xbox One Wireless Receiver in Windows 10

If you are having problems installing your receiver in Windows 10, this guide will show you how to make it work by installing the drivers manually.

Written By: Nick



# INTRODUCTION

If you purchased an original Xbox Wireless Receiver for Windows and are wondering how to use it in Windows 10, this guide will show you how to install the driver manually if it is not picked up automatically.

While these issues are less common in Windows 10 than 7/8.x, it is still known to happen.

## Guide notes

- In most cases, Windows 10 will not have these problems. When it does, manual intervention is required. This improved support comes from native Xbox compatibility being a major feature for Windows 10.
- Windows 7/8.x users: Refer to the Windows 7/8.x guide. These steps are intended for Windows 10.
- I do not know how to trigger the initial installation window manually. This is not shown since this laptop was used for testing after I uninstalled the driver before making the guide.

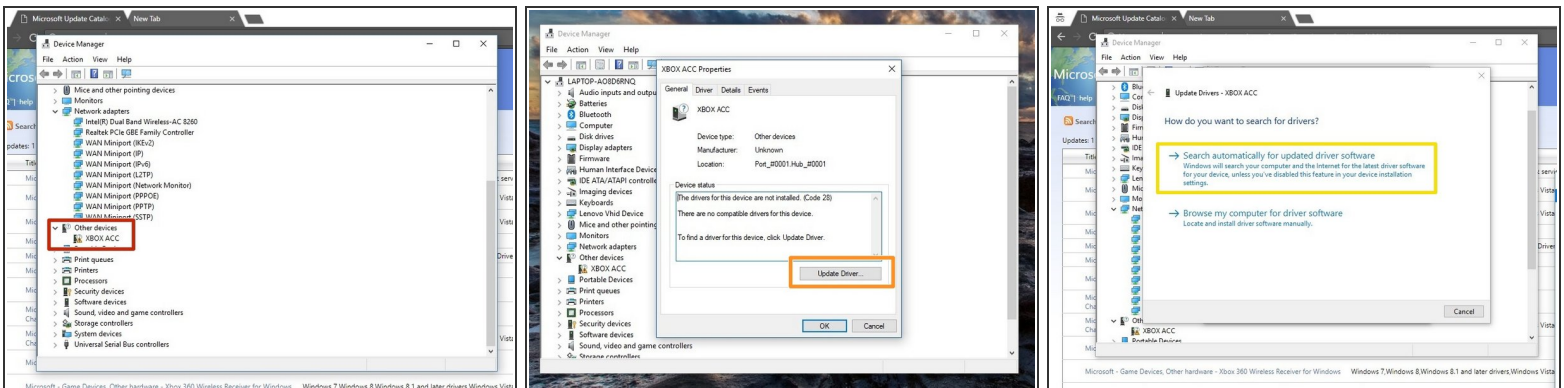
## Step 1 — Plug the receiver in



**⚠ If you are using the Model 1790 (Slim) Xbox One wireless receiver, you must use the following driver: Xbox - Net - 7/11/2017 12:00:00 AM - 1.0.46.1.**

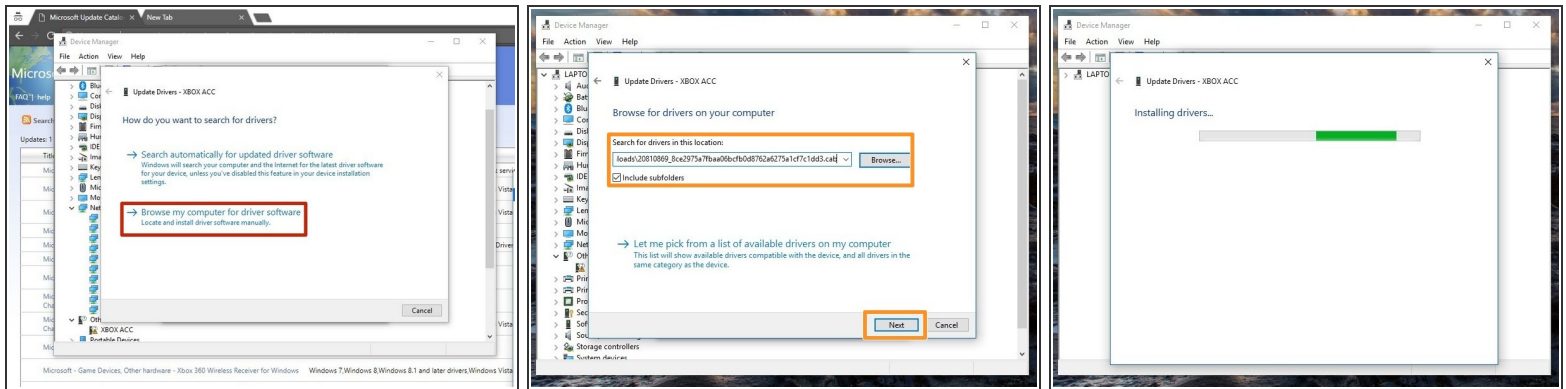
- Plug your Xbox Wireless Receiver into your PC. If the installation works, no work is needed. Proceed to Step 2 if installation fails.

## Step 2 — Driver installation (Automatic)



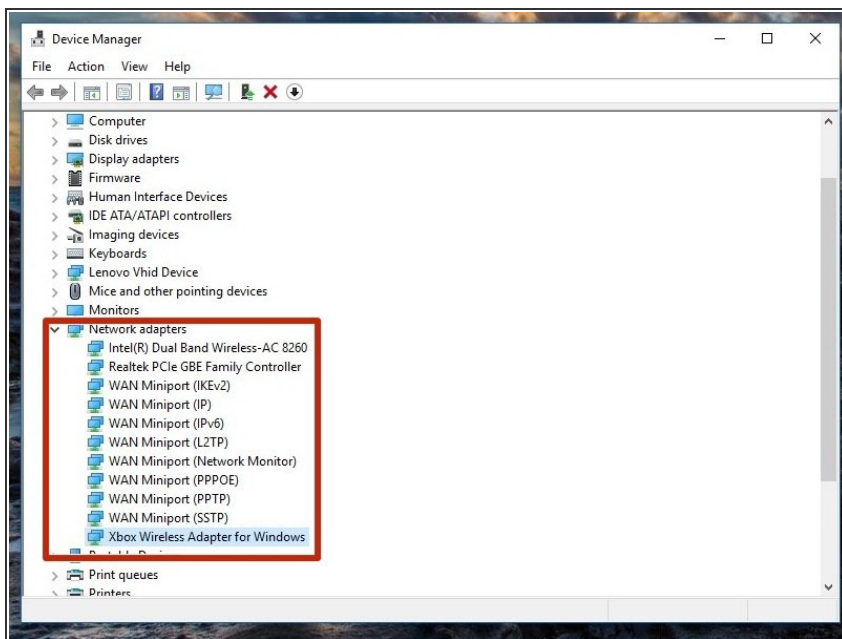
- Open Device Manager. Right click the Start Menu and select **Device Manager**.
- Locate **Other Devices**. Without a driver installed, the receiver will be found here.
- Double click **XBOX ACC** and check for **Code 28**. Click **Update Driver** and you will see a window with two options.
- Before manually installing the driver, select **Search automatically for updated driver software**. Install the driver manually if this fails.

## Step 3 — Driver installation (Manual)



- **Note: Search Xbox Wireless if the link does not work.** Download the driver from the [Microsoft Update Catalog](#). Select the following driver: **Microsoft driver update for Xbox Wireless Adapter for Windows (18.31.1.34)**. Unzip the file with [7Zip](#).
- Select **Browse my computer for driver software**.
- Locate the folder where the driver is located and select **Copy address as text**. Paste the location into the search box. **Click Next**.

## Step 4 — Verify the driver installation



- To verify the driver was installed correctly, check under **Network Adapters**. If the driver was installed correctly, it will show up here.

