



How to open a Jura Impressa S95's cover

Opening the top cover on a a Jura Impressa S95

Written By: VauWeh



INTRODUCTION

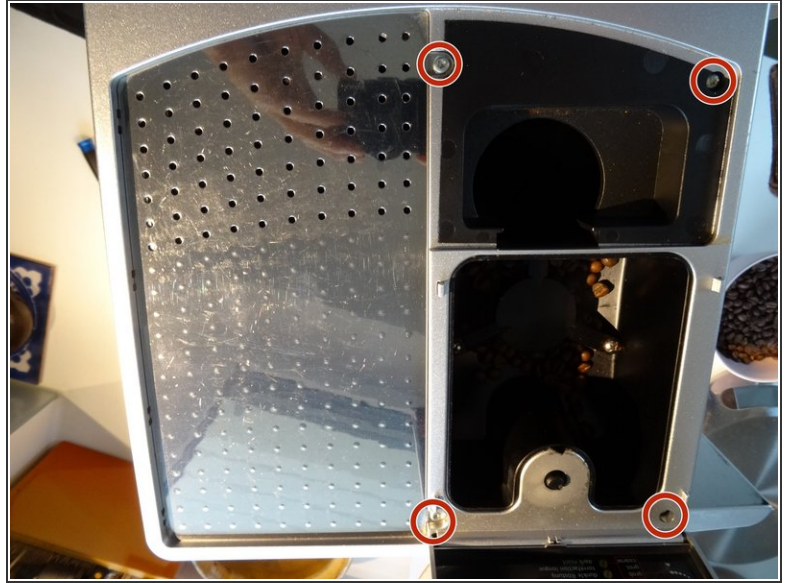
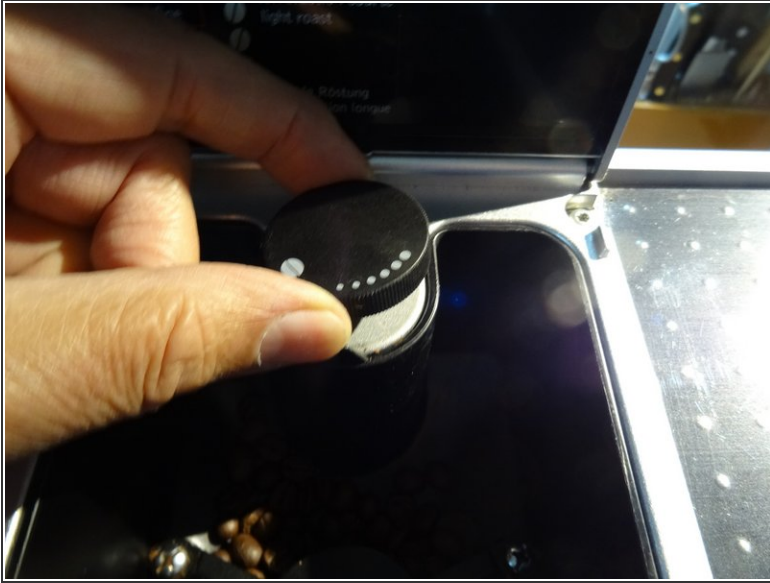
To get inside the machine, you must remove the top cover first.



TOOLS:

- [T15 Torx Screwdriver](#) (1)
-

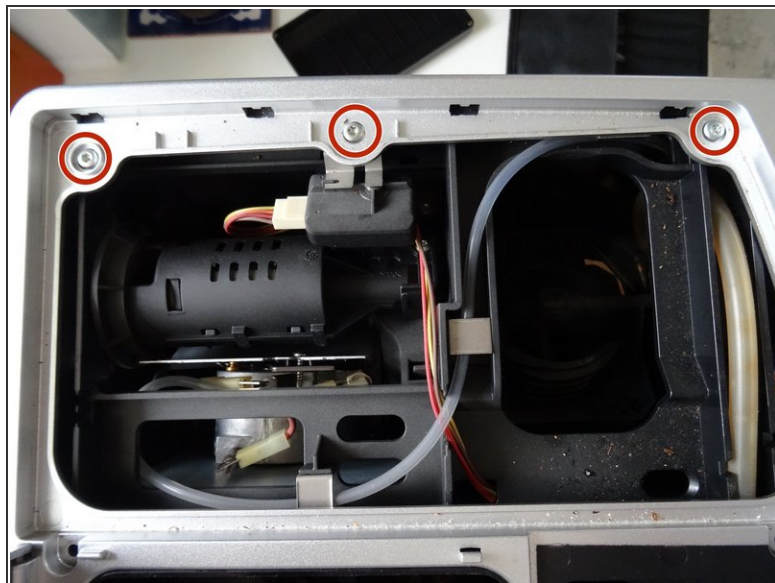
Step 1 — How to open a Jura Impressa S95's cover



 Always remove the power cord from the wall outlet.

- Lift out the coffee tray
- Remove the lid sealing the coffee bean container
- Remove all of the coffee beans you can possibly remove.
- Pull the adjuster of the coffee bean grinder straight up
- Remove the four T15 Torx screws

Step 2



- Remove the cup heat plate.
 - ⓘ It can be opened like a book.
- Below the cup heat plate there are three more T15 Torx screws. Remove them.

Step 3



- The top cover is now free. Lift ´er up and set ´er aside.

To re-assembly your device, follow these steps in reverse order.