



How to open a bObsweep Robotic Vacuum for Repair

The step-by-step guide to opening a bObsweep for any internal repair.

Written By: Tatiana



INTRODUCTION

This guide outlines the first steps necessary for internal repairs, such as: wheel, main board, sensor, and motor replacements. By the end of this, you will know how to disassemble bObsweep's cover completely.



TOOLS:

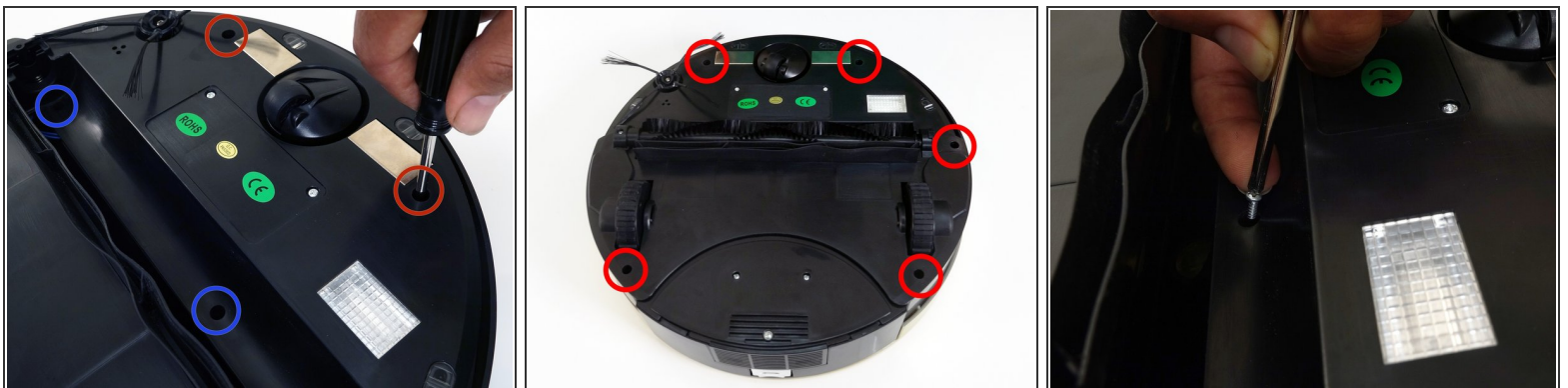
- [Phillips #2 Screwdriver](#) (1)
-

Step 1 — bObsweep's cover



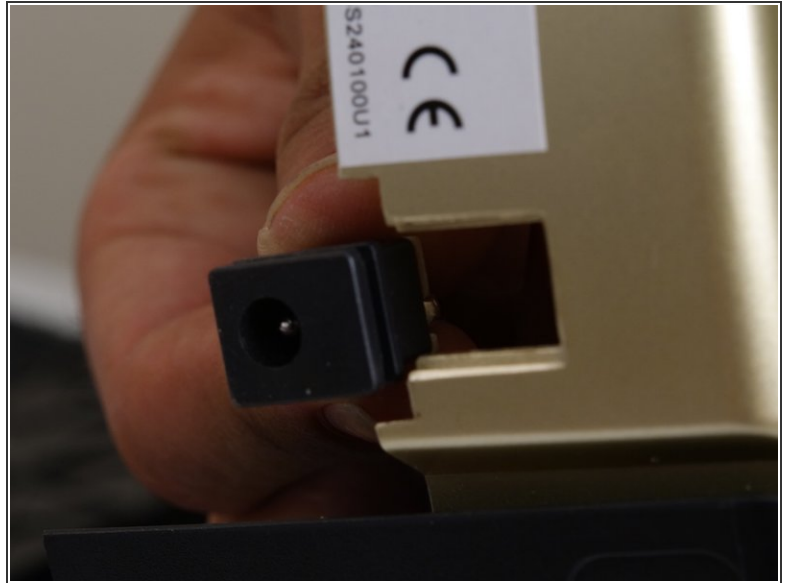
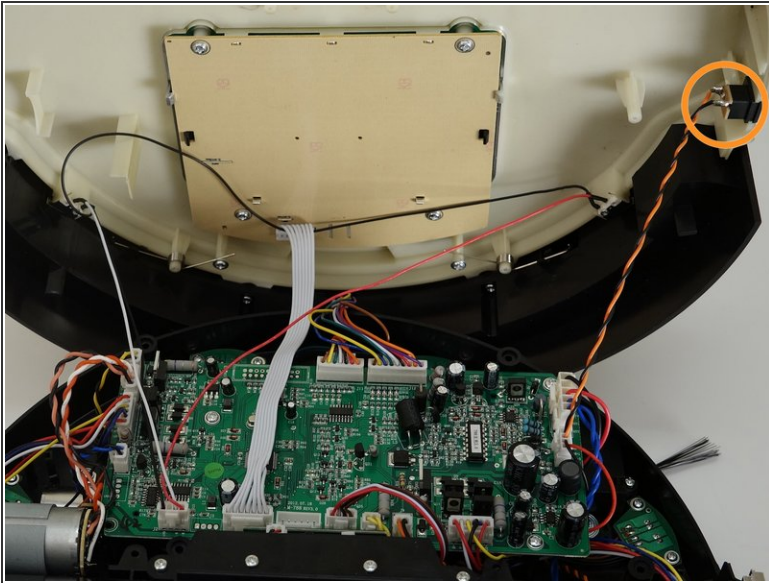
- Flip Bob over and remove the 7 screws around which hold the cover together.
 - Remove the main brush. Unscrew the holder, and lift the brush out. Reminder: Keep this screw separate from the others so you can use it later to reinstall.
- ⓘ Depending on your model, there may be only 6 screws installed on bObsweep.

Step 2



- There are two screw holes inside the brush compartment: one in the centre, one on the left end. Remove both and keep aside for reassembly.
- There are five more screws around bObsweep's edges. Two are installed at the top and bottom, and one on the right end of the main brush.

Step 3



- Flip bOb back over so you can see the screen. Lift the cover up to reveal bObsweep's main board.
- Detach the power inlet from the cover. Grip and slide it out.

Step 4



- Remove three circuit plugs from the motherboard. Pinch the small white tab on the side of each circuit plug and pull straight up to release each from the motherboard.
 - 1. On the bottom left corner: a small connector with red, black and white wires.
 - 2. One thick white wire that attaches on the right side of the previous connector.
 - 3. On the top edge of bOb's motherboard: a wide multicoloured connector.
- Place the cover aside and begin your repair.

To reassemble your bObsweep, follow these instructions in reverse order.