



How to remove FHX-720bt head unit in a 1999-2007 Chevrolet Silverado

This guide will show you how to remove your FHX-720bt head unit to access the back panel and fix any electrical issues or add upgrades.

Written By: Justin Reiner



INTRODUCTION

Before starting this guide there are some things you should be aware of; First make sure your vehicle is parked on a level surface with the parking brake on. This is needed for one step so you can safely put the vehicle in 1st gear so the shifter is out of the way. For this tutorial the only tools needed are 1/4" ratchet, 16mm wrench, and 7 mm wrench .



TOOLS:

- [1 4" socket wrench](#) (1)
 - [5/16" Wrench](#) (1)
 - [7mm Socket](#) (1)
 - [Socket Wrench](#) (1)
-

Step 1 — How to remove FHX-720bt head unit in a 1999-2007 Chevrolet Silverado



- Locate the hood latch in your vehicle located on the drivers side under the dash to the left of the parking brake pedal.
- Pull the latch to release hood.

Step 2



- Locate the hood release latch in between the grille and hood, directly above the emblem.
- Lift up on the latch then raise the hood.

Step 3




- Locate your battery. It's in the front of the engine compartment, on the drivers side.
- Remove the negative terminal with 5/16" socket or by using a 5/16" wrench.

 BE CAREFUL. DO NOT CROSS POSITIVE AND NEGATIVE WIRES.

Step 4



 Make sure the vehicle is on a flat surface, then use the parking brake.

- Shift vehicle into 1st gear so the shifter will be out of the way for the next step.

Step 5



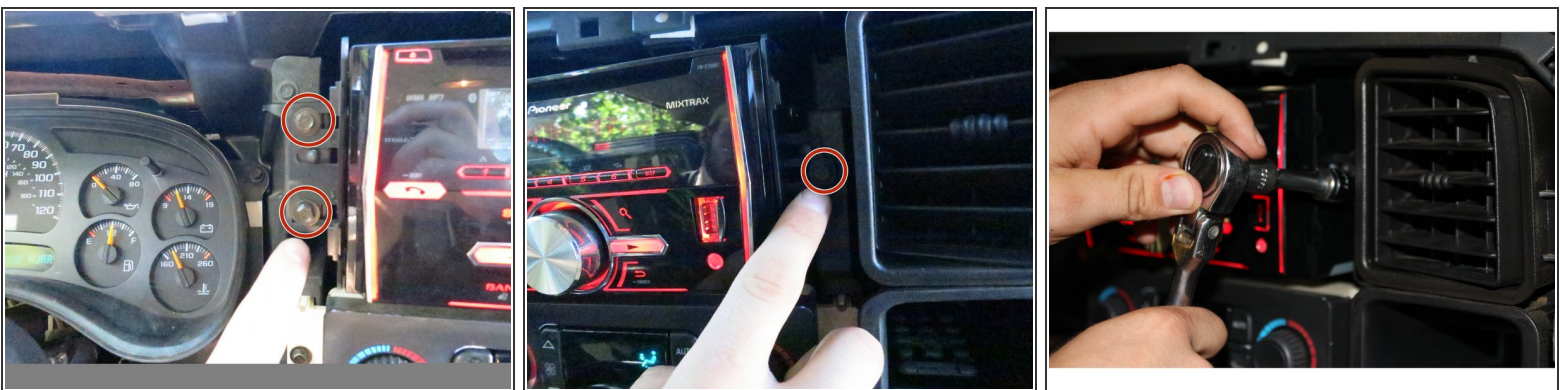
- Firmly grasp the dash trim and pull it towards you.
- Once it is removed from its clips, pull up and the trim will come out the rest of the way.
- Set the trim aside; you are ready for the next step.

Step 6



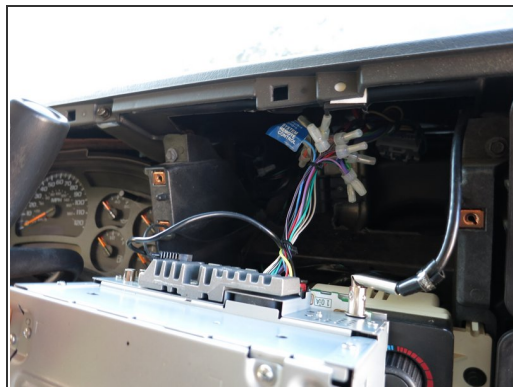
- Remove the face plate from the head unit.
- To do this, pull out on both the left and right sides to release the face plate from its clips.
- After being released from the clips, set the face plate aside and continue to the next step.

Step 7



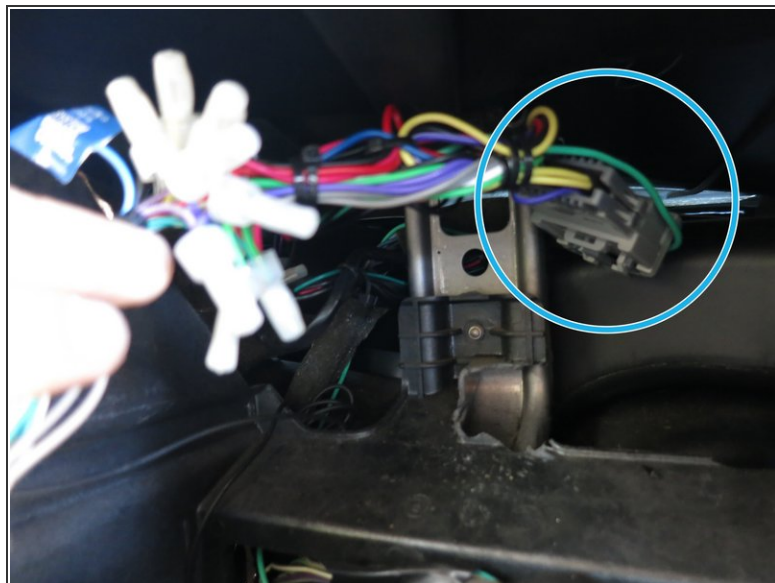
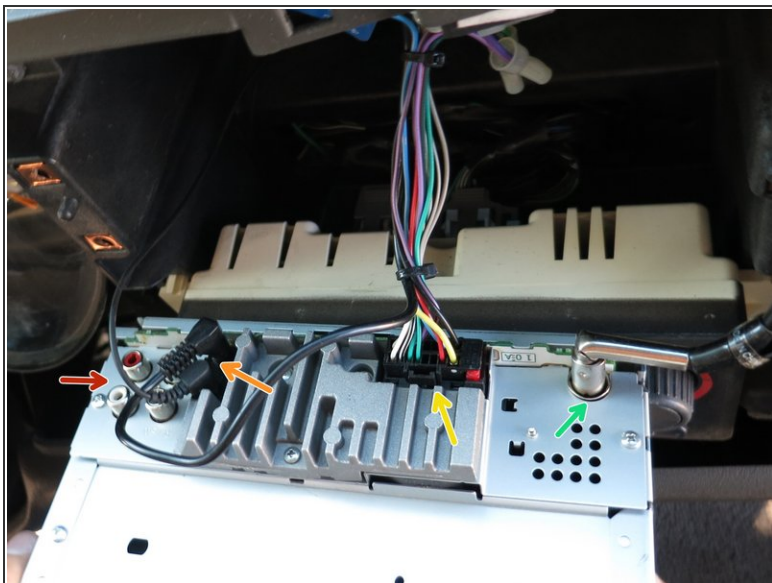
- Remove three bolts using a 7mm socket, two on the left and one on the right.

Step 8



- Now that the bolts are removed; You can gently pull the head unit out.
- You can now access the back of the head unit.

Step 9



- This is the back panel of the head unit and assorted wiring connections that you can now access for upgrades, replacements, or fixes.
- Listed below are the wires coming connected to the head unit. The colors correspond to the same color of the wire.
- RCA inputs
- Microphone input/wire
- Power/audio/assorted control wire harness
- Antenna input/wire
- Harness disconnect

To reassemble your device, follow these instructions in reverse order.