



How to repair Nova Waffle iron (waffle maker)

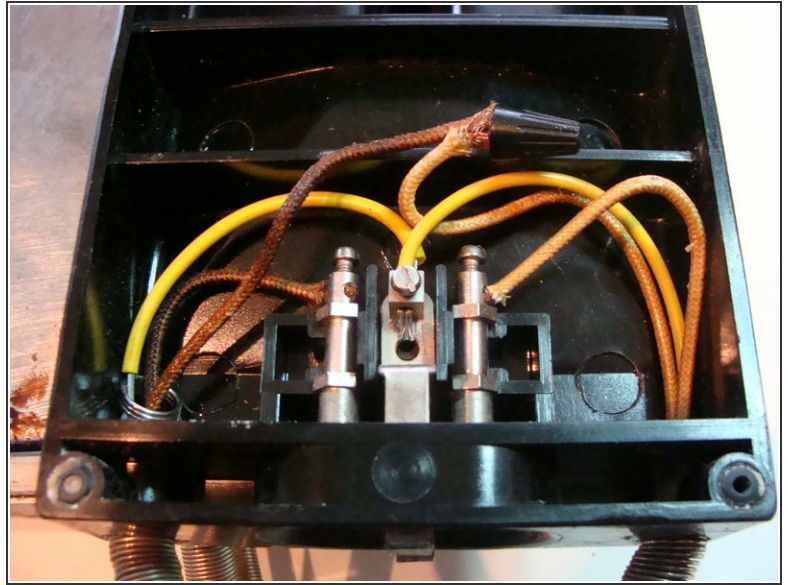
How to repair grandma's Nova waffle maker.

Written By: Pierre

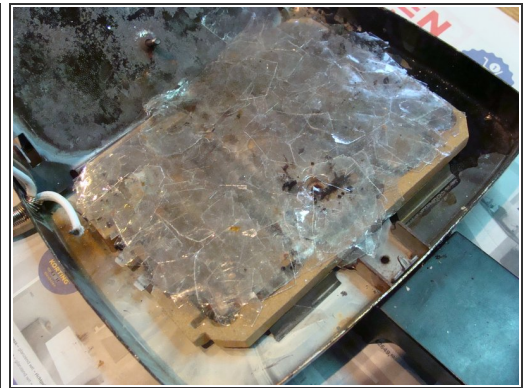
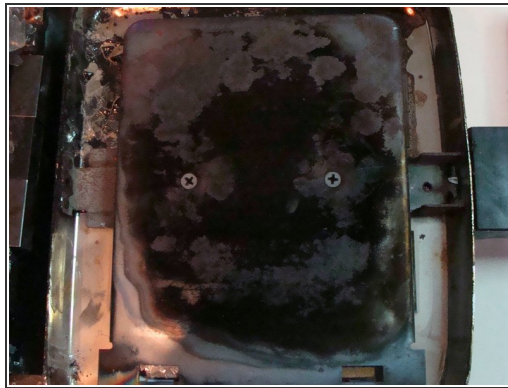
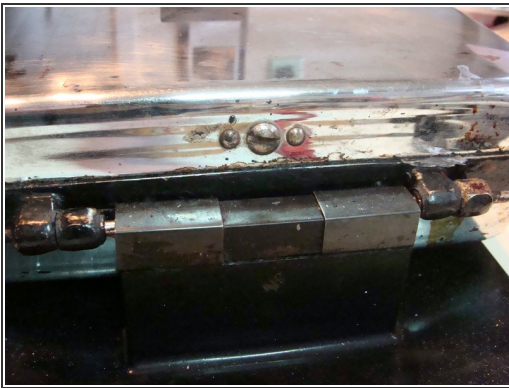


INTRODUCTION

Make the very best waffles with grandma's waffle iron.

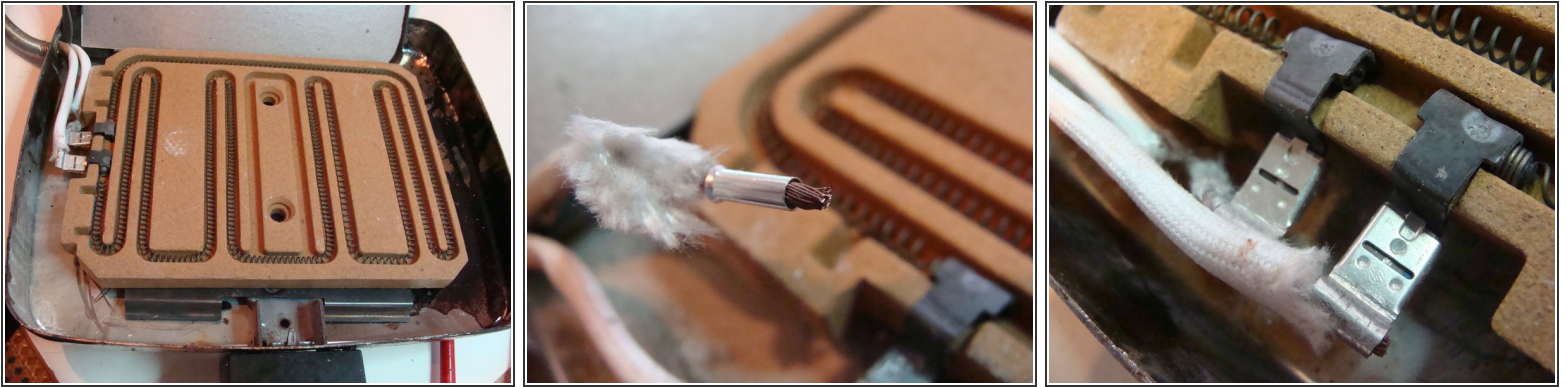
Step 1 — Check the electrical connections in the contact box.

- Open this box to check the connections.

Step 2 — Open one side of the device.

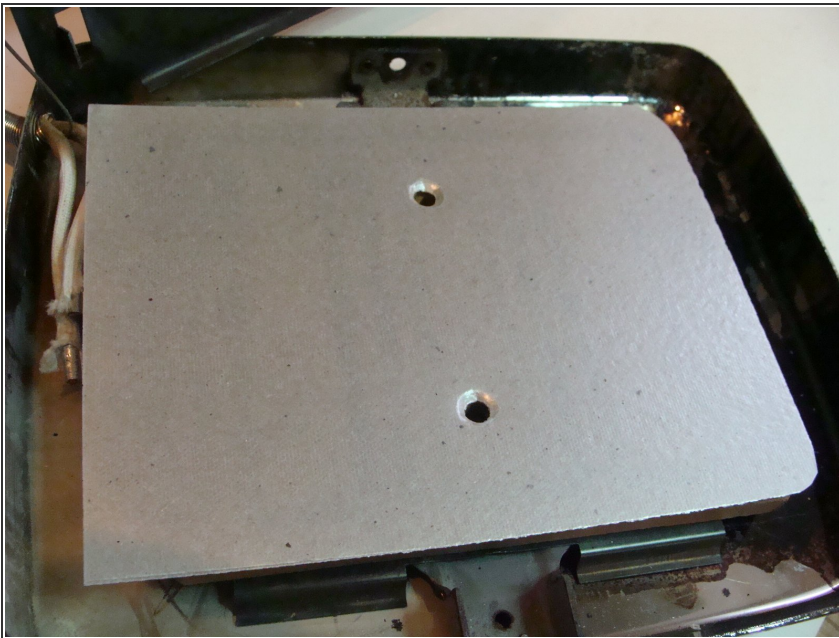
- Open one side of the device.
- Remove the protective plate.
- Remove the old mica flakes.

Step 3 — New clamps



- Place new cable ends and cable shoes.

Step 4 — Mica



- Cut new mica sheets to size. These form an electrical insulator and at the same time a heat conductor with the protective plate.
- Fit the protective plate and fit this side back onto the waffle iron.
- Repeat these steps on the other side of the waffle maker.

Step 5 — Assemble the whole.



- Reinstall the device in reverse order.
- Now getting started ... baking waffles in grandmother's way !! Tasty.

To reassemble the device, follow these instructions in reverse order.