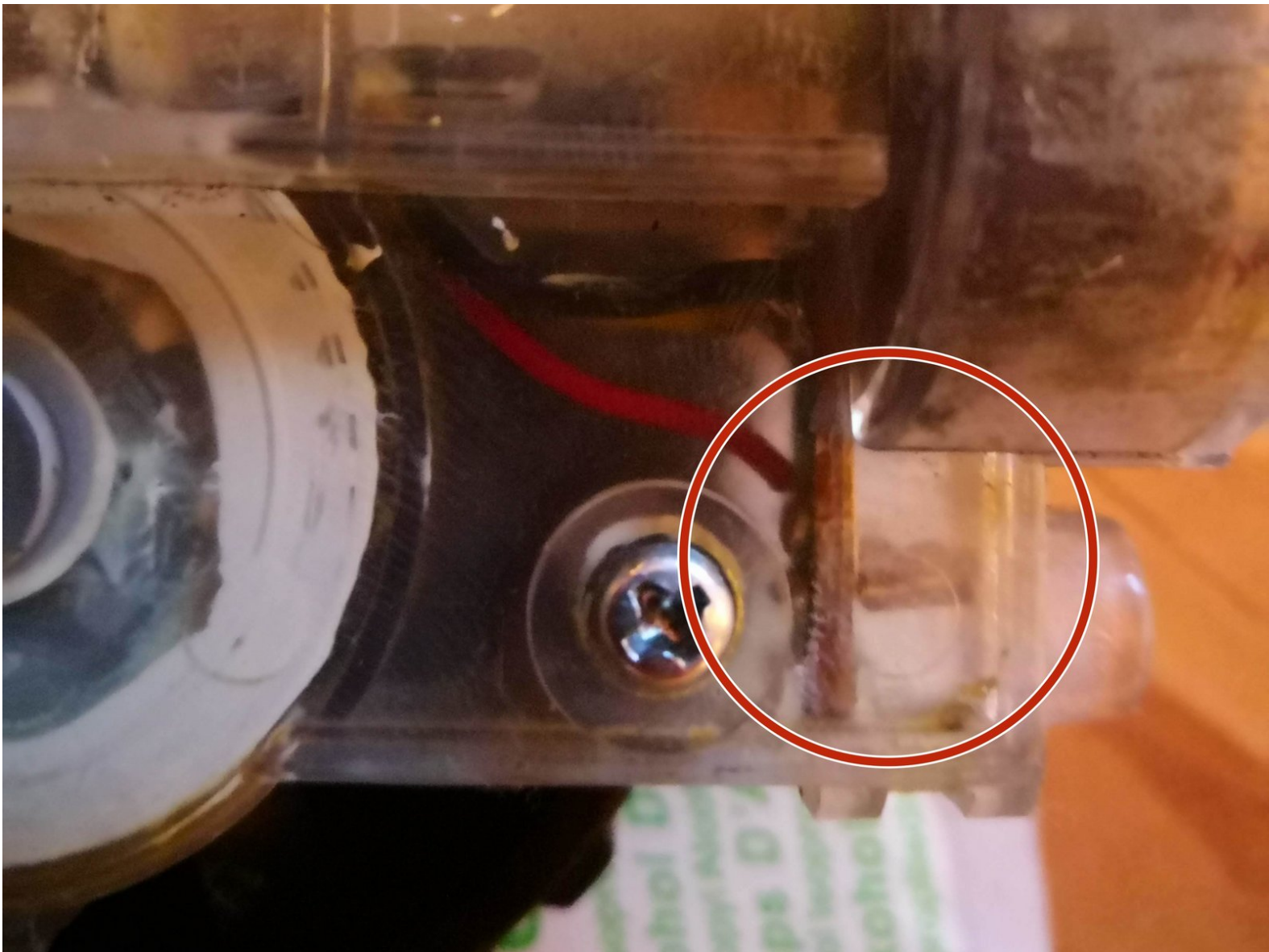




How to repair bObsweep wheel encoder

If you are getting error 00 (left) or error 01 (right) but in the diagnostic mode the wheel turn freely, then maybe you need to repair the encoder

Written By: Erwin



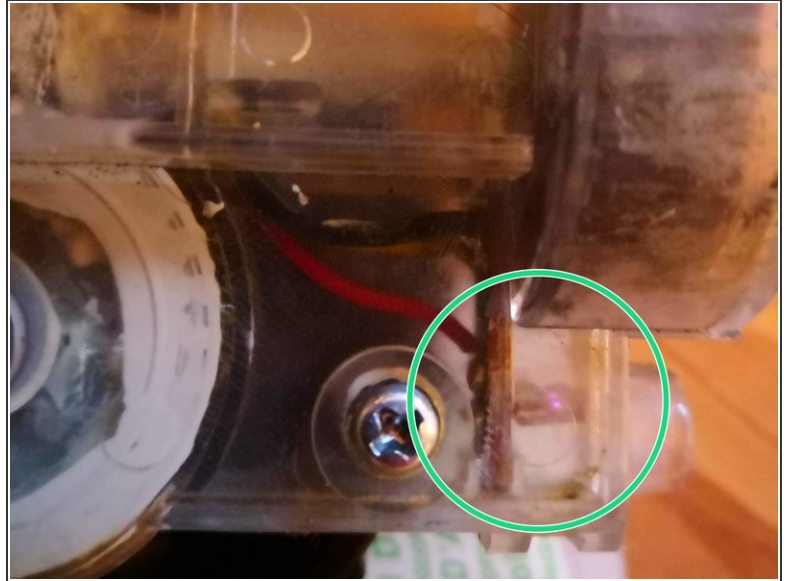
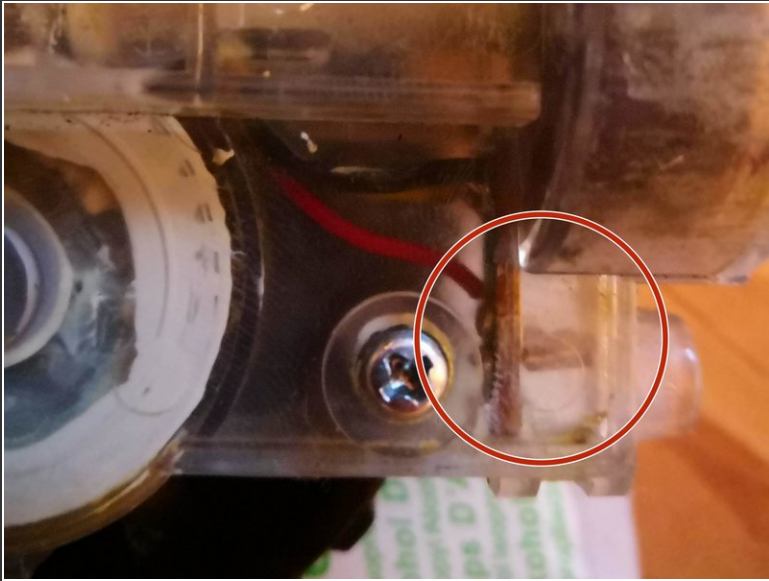
**TOOLS:**

- [Soldering Iron](#) (1)

**PARTS:**

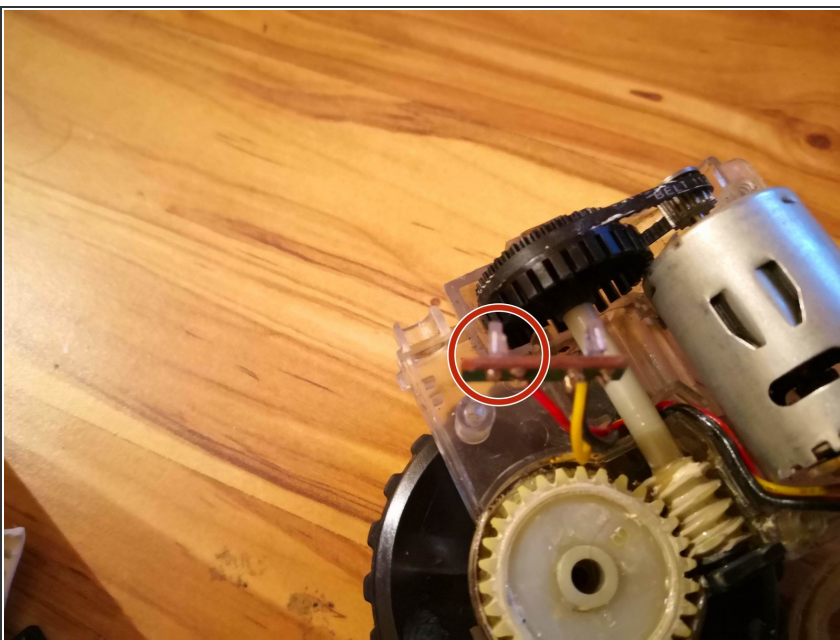
- [IR LED](#) (1)

Step 1 — Disassembly and check



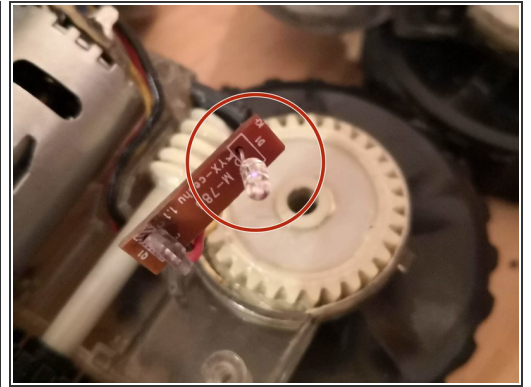
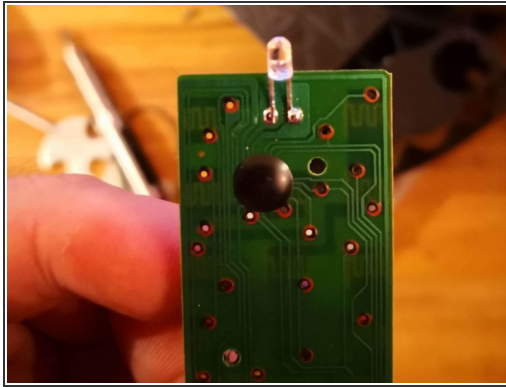
- Open the vacuum following another guide like: [bObsweep Robotic Vacuum Cleaner Left or Right Wheel Replacement](#)
- Using your phone camera, see if the infrared LED is emitting light. The vacuum keep the LEDs in the wheel powered at all times while is powered on

Step 2 — Remove the old led



- Open the wheel assembly
- Desolder the led. The led is in the side with only one connection (red in the image)

Step 3 — Replace



- I am going to use a small led from a cheap remote
- The positive led go to the side of the red wire

To reassemble your device, follow these instructions in reverse order.