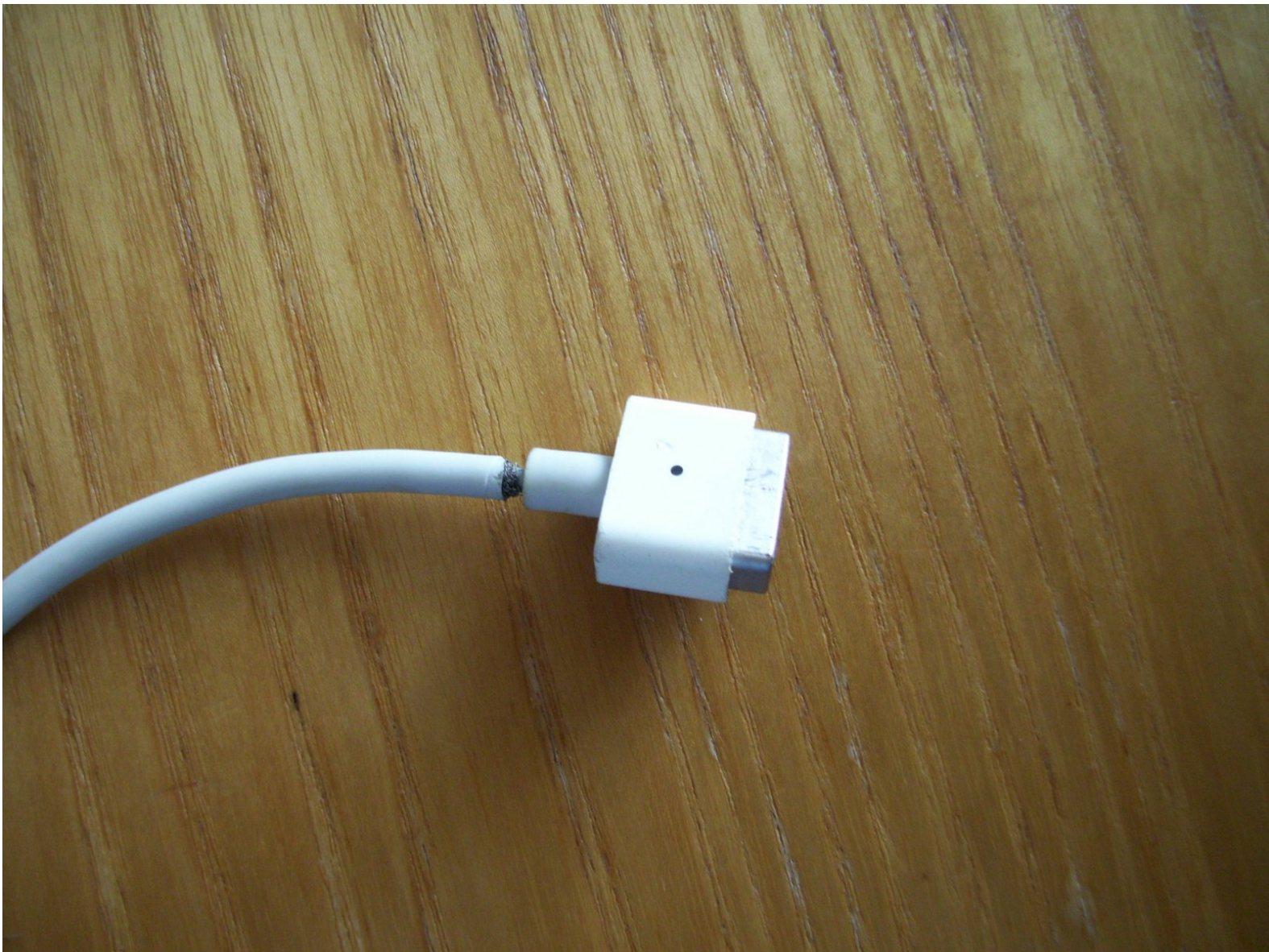




How to repair the MagSafe Magnetic End

This guide shows a short step by step process of repairing a broken MagSafe charger at the magnetic end. It won't be pretty, but it will work.

Written By: 040304



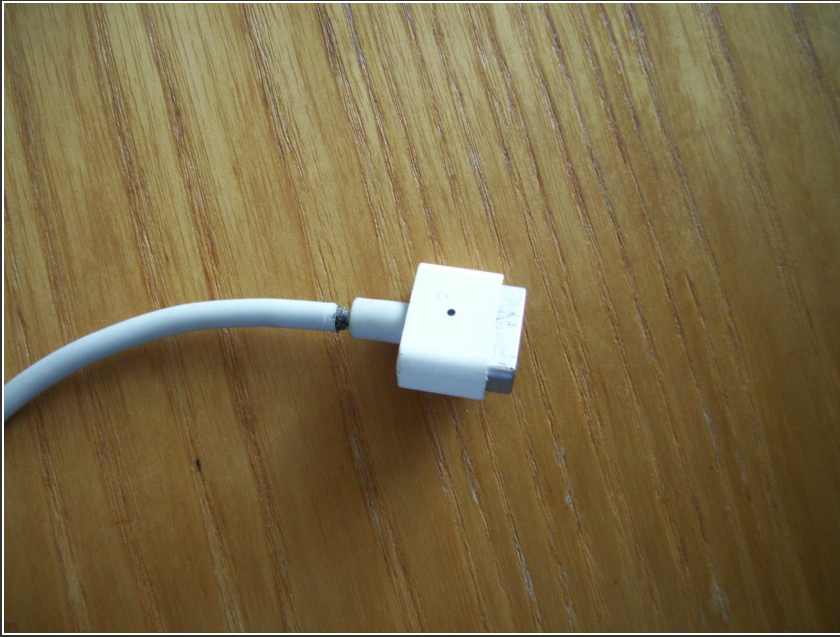
INTRODUCTION

As you can see by the photos, I took a broken and otherwise useless magsafe end and made a splice. After a resolder, the LED shows the computer charging.

TOOLS:

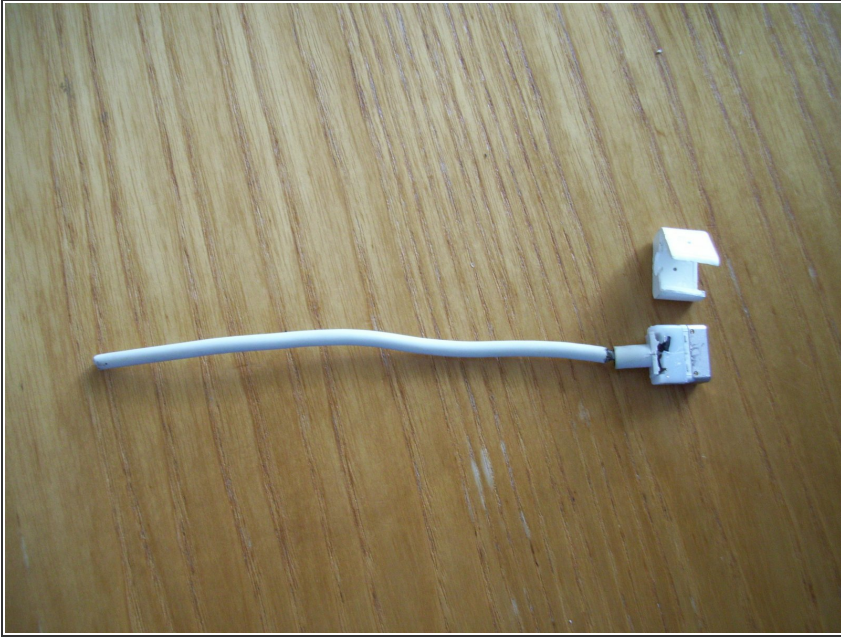
- [Large Needle Nose Pliers](#) (1)
 - [iFixit Tech Knife](#) (1)
 - [Soldering Iron](#) (1)
 - [Sugru Moldable Rubber \(3 Pack\)](#) (1)
-

Step 1 — How to repair the MagSafe Magnetic End



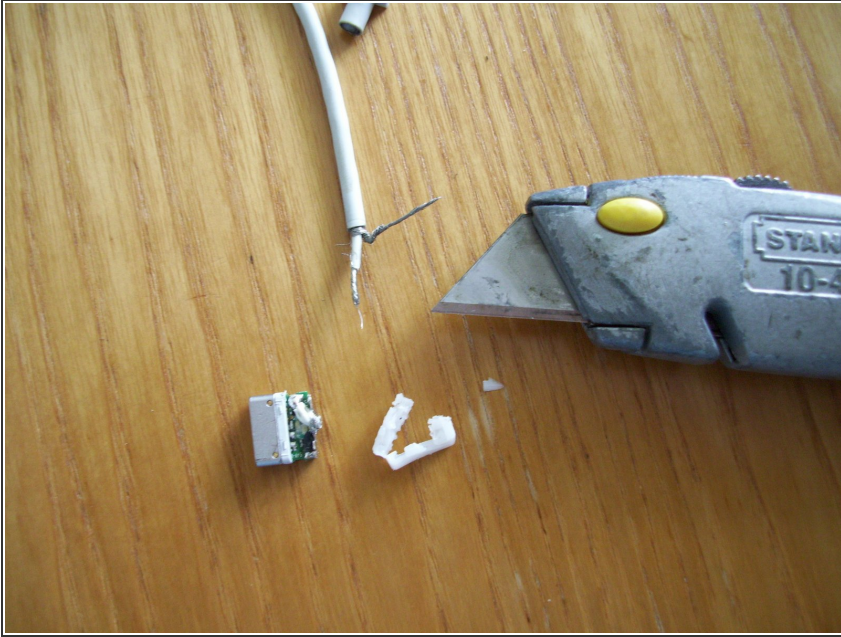
- This is a hyper extended end of a magsafe. It is no longer working due to the wire having pulled apart.

Step 2



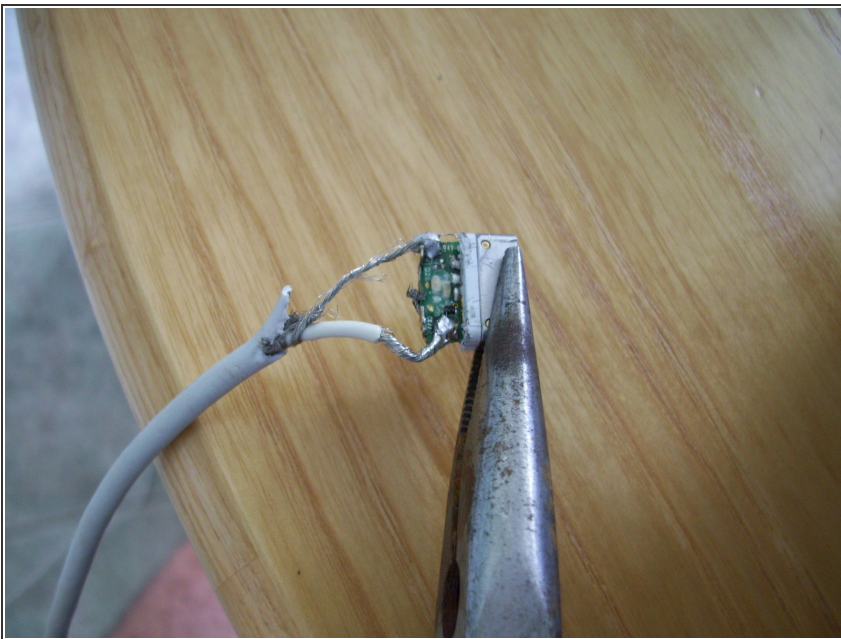
- Use wire cutters to cut the wire of the magsafe some distance back from the magnetic end. I cut about 4 inches back. You can get much closer like maybe an inch, as you will see in the next step.

Step 3



- I used a utility knife to cut the nice white cover off the tiny printed circuit board. There is a molded plastic cover similar to hot glue which had to be stripped off the PCB.

Step 4



- 1.) Take the good end of the existing wire and strip it.
- 2.) The interior wire, which is coated in white should be soldered on a square metal plate about one eighth inch square. This plate is opposite a small chip for reference.
- 3.) The braided wire coats the white interior wire, and is wrapped around it in two different directions. This wire should be peeled off and then twisted together.
- 4.) Then solder it in place opposite the chip and the other wire.

Step 5



- Plug in wall outlet and install on computer to test.

⚠ At this point there are still exposed live wires carrying DC voltage. To eliminate risk of shock or shorting, cover the bare wires in [electrical tape](#), [heat shrink tubing](#), or [Sugru](#).

To reassemble your device, follow these instructions in reverse order.