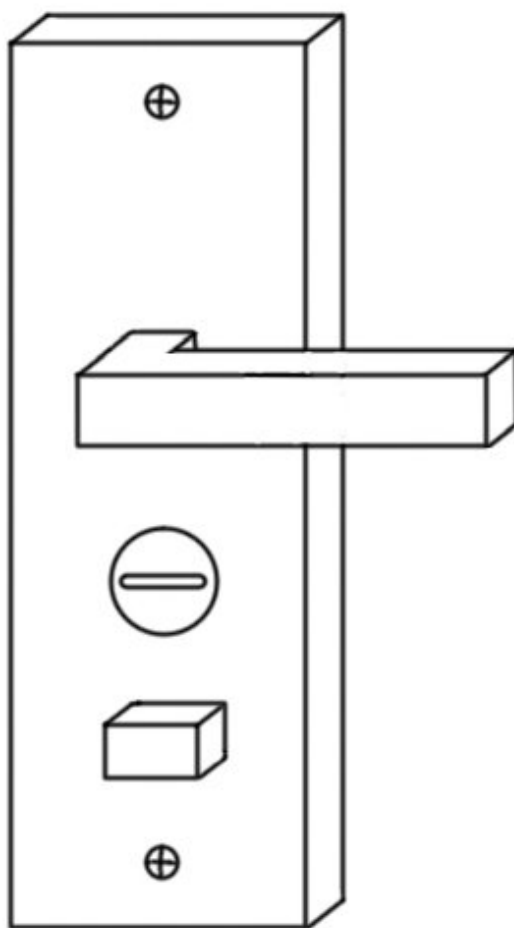




# How to replace the door knob

Replacing the safety door know by yourself

Written By: Z.Heng



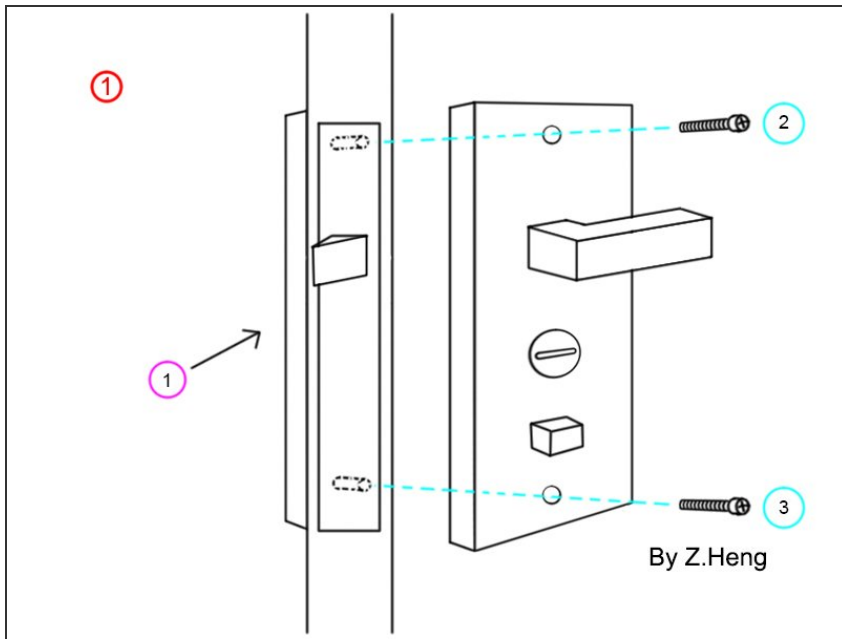
By Z.Heng



## TOOLS:

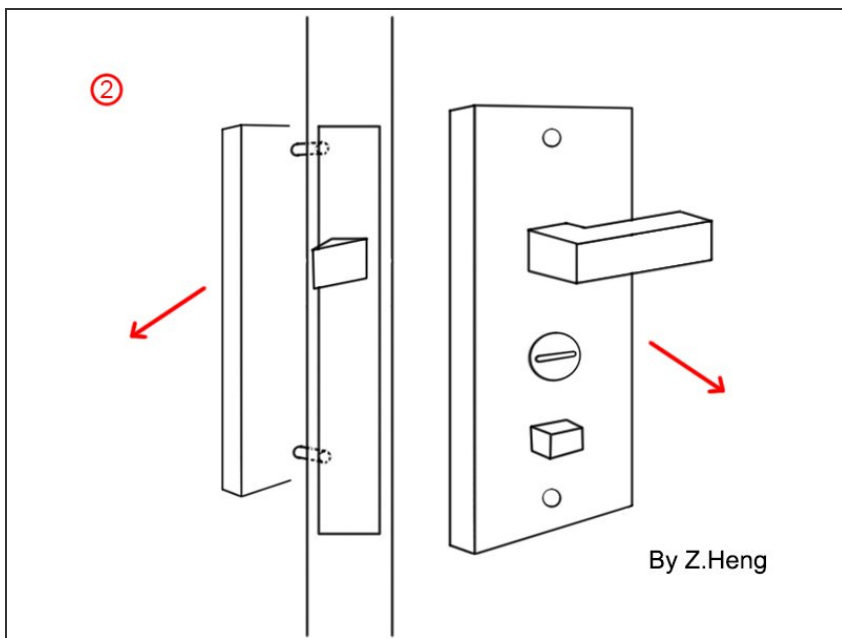
- [New Item](#) (1)
  - [New Item](#) (1)
-

## Step 1 — Remove the screw holding the handle



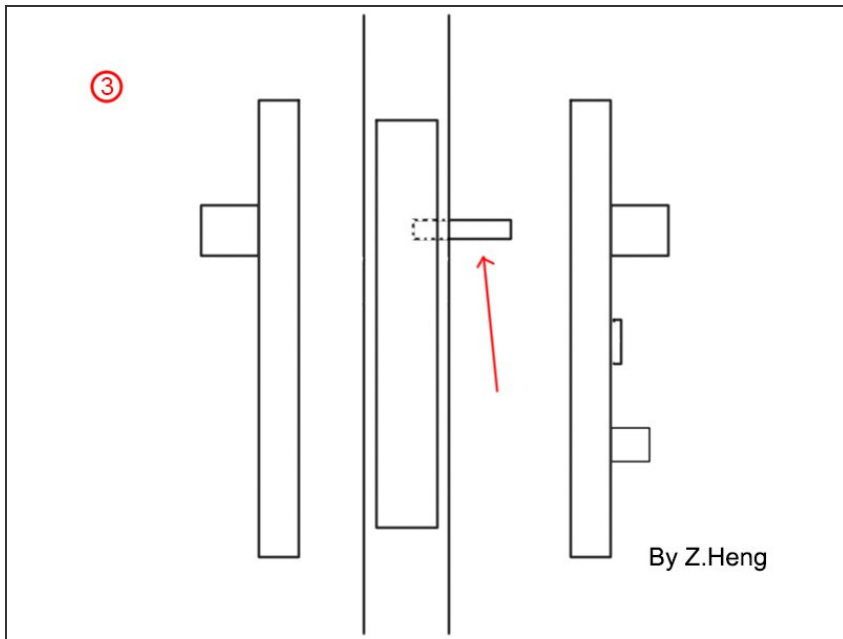
- It is advisable to work with two people, one holding the outer handle on the outside and the other unloading the screw on the other side.
- Remove the two screws.


## Step 2 — Remove the handle



- Use pry bar carefully pry around, you can remove both sides of the door handle.
- ⚠ There is usually a plastic washer between the handle and the door, taking care not to damage it.
- ⚠ There will be a metal square shaft connected between the handle. Be careful not to lose it when removing the inside handle because the shaft is inside and outside.

### Step 3 — Pay attention to the square shaft



 Pay attention to the installation direction of this square shaft. Do not knock it off when removing the handle.

Reversing the steps to know how to install the knob. It's easier than you thought, isn't it?