



How to restring an Acoustic Guitar

The guide will help you to replace the old strings on your acoustic guitar to a new set of strings.

Written By: Brian Yoon



INTRODUCTION

Do you have an acoustic guitar that needs to be restrung? Follow the steps to restring your instrument and make it sound brand new again.



TOOLS:

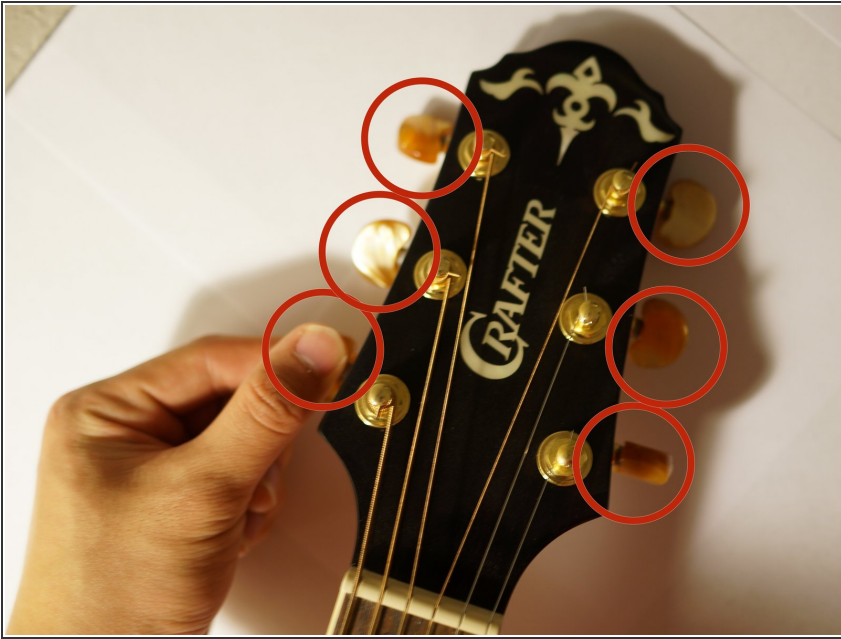
- [Clipper](#) (1)
- [Guitar Tuner](#) (1)



PARTS:

- [Light gauge acoustic guitar strings](#) (1)

Step 1 — Strings



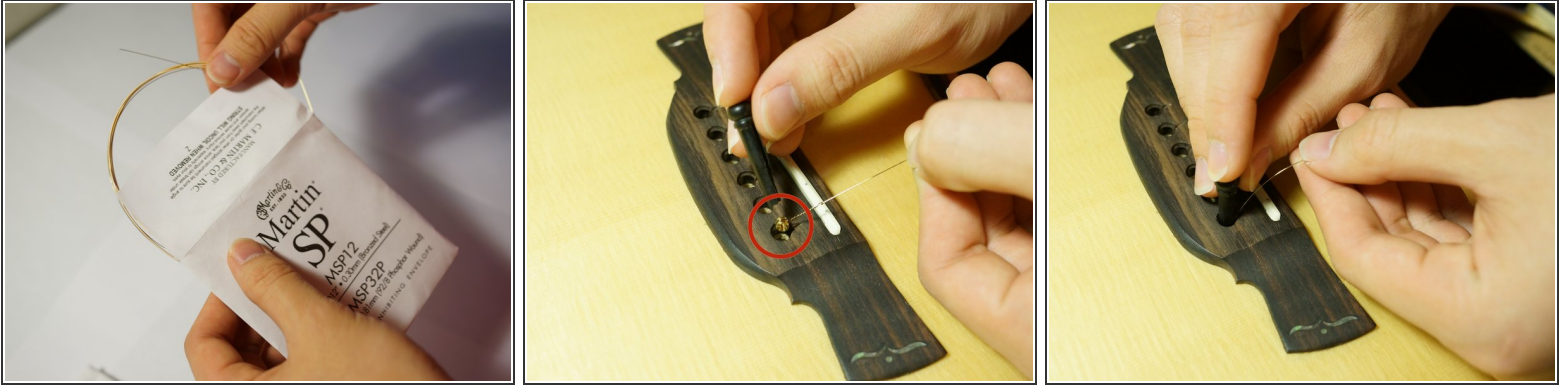
- Twist the 6 knobs in appropriate directions to unstring the guitar.
- ⓘ There are six strings on a guitar. From the thickest string to thinnest, or left to right, the strings are named E(low), A, D, G, B, and E(high) strings.
- In order to unstring the strings, turn the knobs for E(low), A, and D strings in clockwise direction and turn the knobs for G, B, E(high) strings in counter clockwise direction.

Step 2



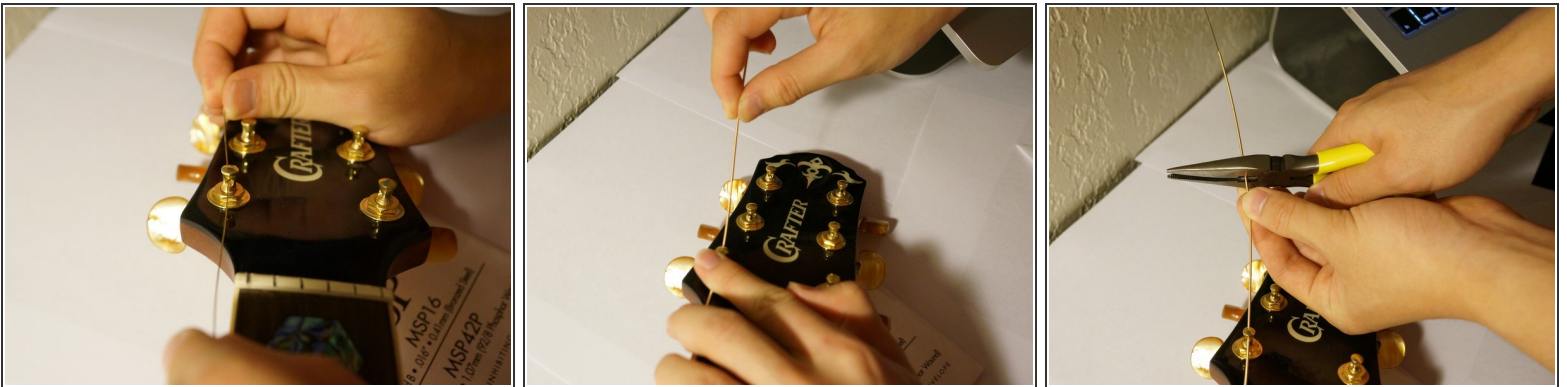
- Carefully remove the pins from the bridge and remove the old strings.

Step 3



- Take the new strings out of the package.
- Pin the strings onto the bridge, into the pinholes from left to right in the following order; E(low)-A-D-G-B-E(high).
- ⓘ Refer to the cover of guitar strings package to distinguish the strings.

Step 4



- Insert the end of each string into the head machine.
- Leave about 1 to 2 inches of string from the head machine and cut it using a clipper.
- ⓘ Repeat the process for all six strings.

Step 5



- Guide the string through the pin hole, so that about 1/3 of an inch of excess string comes out from behind the pin.
- Turn the knobs in a counterclockwise direction for E(low), A, D strings.
- Turn the knobs in a clockwise direction for G, B, E(high) strings.

Step 6



- Clip the tuner on the head of the guitar and turn it on.
 - Tune each string by plucking the string and checking the letter musical note indicated on the tuner.
- ⓘ From left to right, the appropriate musical notes of the strings are, E-A-D-G-B-E

To reassemble your device, follow these instructions in reverse order.