



# How to restring and tune a Paloma Shahi Baaja

I will instruct you on how to restring and tune the 2 melody strings on a Paloma shahi baaja.

Written By: Eric Ivy



## INTRODUCTION

The melody strings are the most important strings on the shahi baaja. This guide will show how to repair or replace a worn out melody string and then tune it properly.

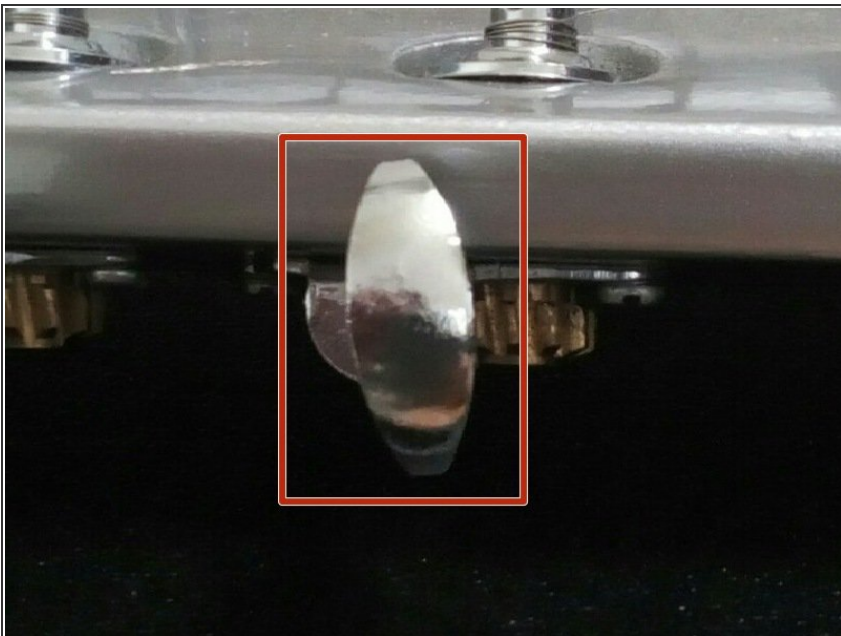
There are 15 tuning pegs on this instrument. This guide will focus on the two strings that the melody notes are played on. These strings are tuned with the tuning pegs that are seen all the way to the left.

## Step 1 — How to restring and tune a Paloma Shahi Baaja



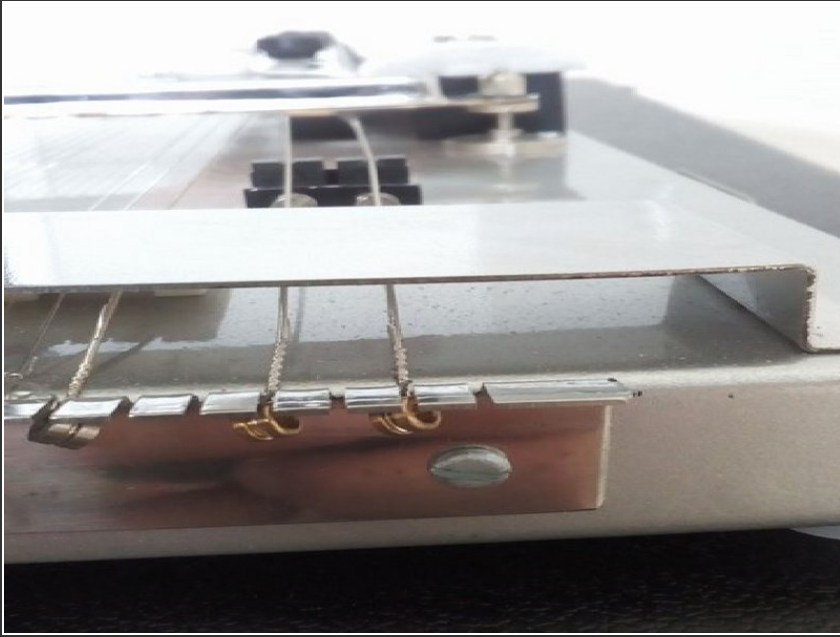
- Both melody strings can be tuned by using the same process. Once one string has been tuned, simply repeat these steps to tune the other string.

## Step 2



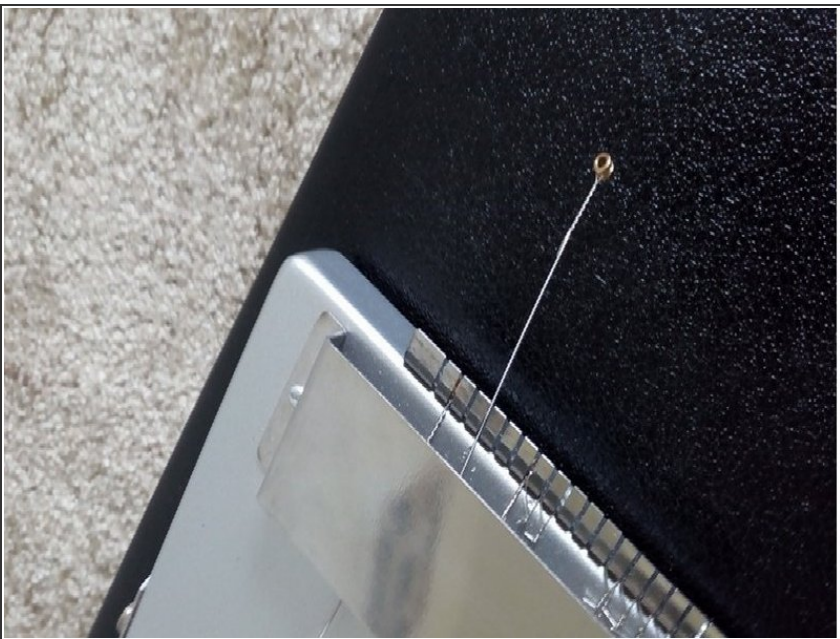
- Carefully, turn the tuning peg counterclockwise to tighten the string. Tightening the string will raise the pitch of the note.
- If the pitch gets too high, turn the tuning peg slowly clockwise to loosen the string. Loosening the string will lower the pitch of the note.

### Step 3



- Locate the ends of the strings. These can be found at the base of the instrument where there are metal circles that hold the strings in place.
- Slowly, start turning the tuning peg clockwise to loosen the string.

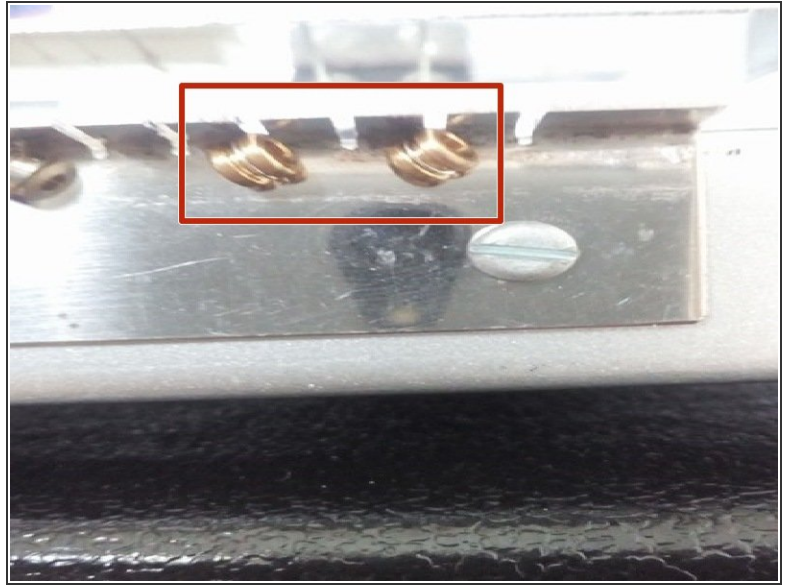
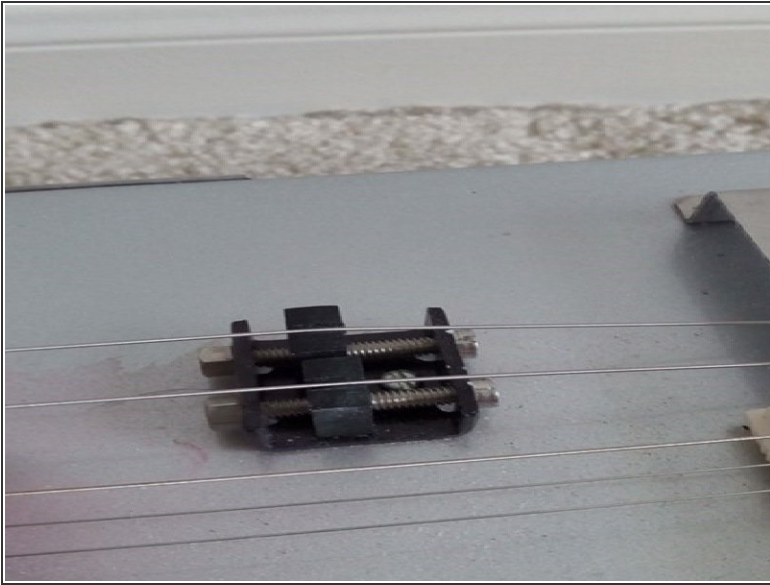
### Step 4



- Once the string has been completely loosened, pull it through the slit of the back piece.
- ⓘ Pay careful attention to how the string comes out.

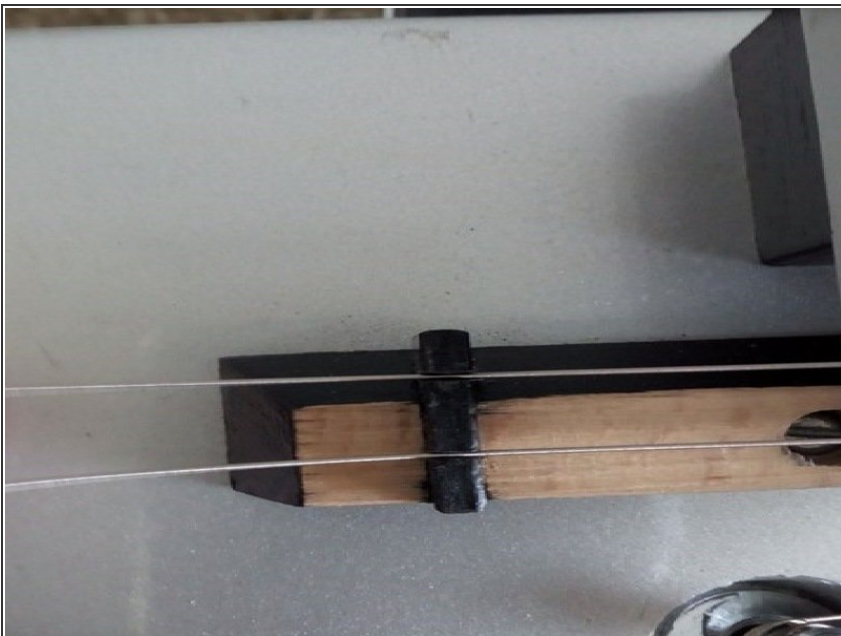


## Step 5



- Take the new string and run it back underneath the metal bridge cover, just as it was removed in the previous step.
- Make sure the string lays within the notch of the bridge.

## Step 6



- ① Once the string is pulled closer to the tuning peg, it will pass over another bridge piece. This is called the nut.
- Make sure that the string fits into the corresponding notch of the nut.

## Step 7



- Run the string through the tuner hole until half an inch of the string is protruding on the other side of the peg.

## Step 8



- Start to turn the tuning peg counter clockwise, keeping the half inch piece of string on top of the string

which is being wound around the tuning peg.

- ⓘ This will stop the string from jumping over the tuner, making a tighter string.
- ⓘ Make sure that the string is laying on top of the tuner as seen in the picture.
- ⓘ Make sure that the string is still resting in both of the bridge notches (steps 5 & 6) as you tighten it.

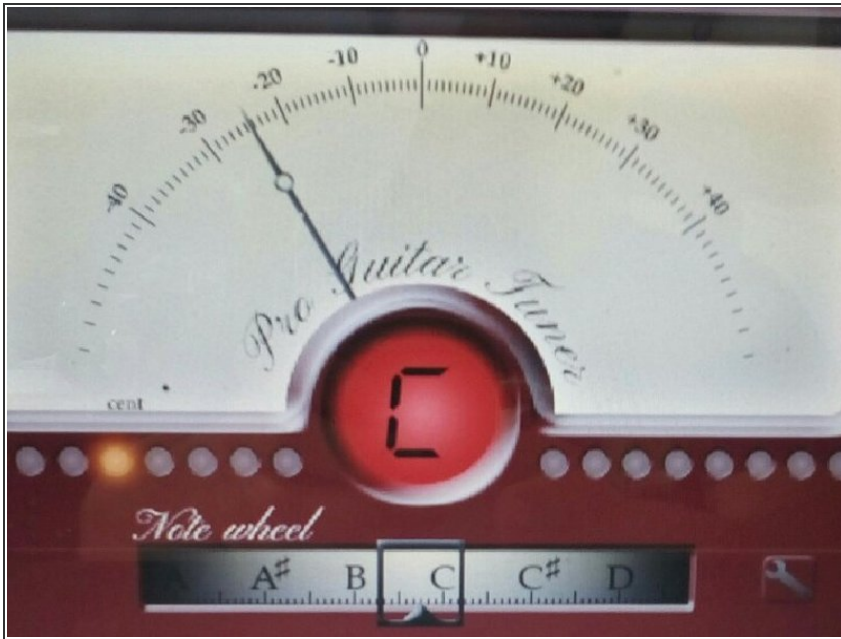
## Step 9



- Tuning- The strings should be laying over the top of the tuning pegs as seen in picture 2.
- ⓘ You may use a guitar tuner to tune your strings.

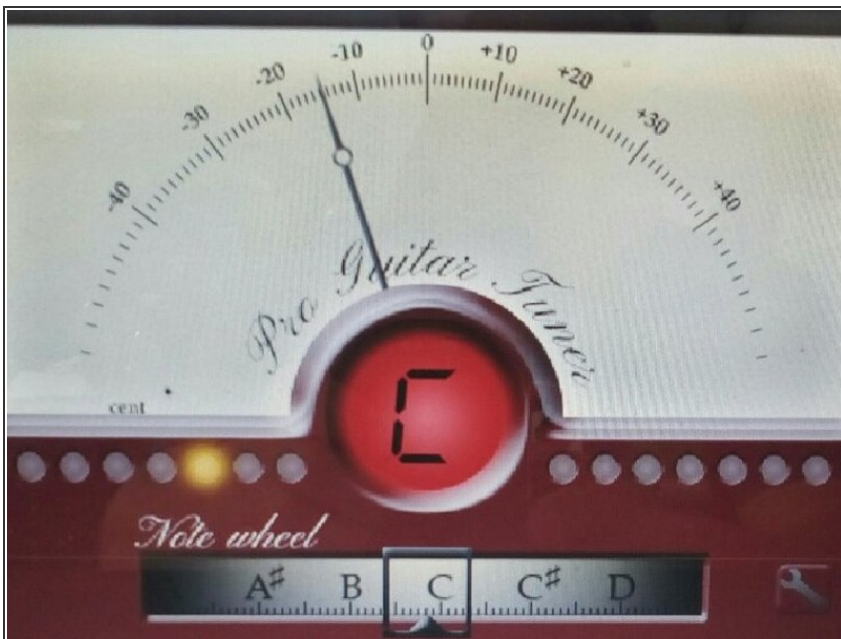


## Step 10 — Tuning a Flat String



- Pluck the string to play a note.
- ① The picture shows what a tuner would look like if the string played a C note that is flat.
- ① Everything that falls to the left of the zero is flat. Everything that falls to the right of the zero is sharp.
- Turn the tuning peg counterclockwise to raise the pitch of the string.
- Continue to raise the pitch as necessary. If your string becomes too sharp, proceed to Step 12.

## Step 11



- Pluck the note again to re-evaluate the pitch.
- ① The picture shows that the pitch is still flat, but not as flat as the picture in Step 10.
- Tighten the string until the needle on the tuner either reaches the zero or passes it.



## Step 12 — Tuning a Sharp String



- ① The picture to the right shows a pitch that is sharp.
- Turn the tuning peg clockwise to loosen the string.

## Step 13



- Continue to tighten or loosen the string until the needle falls exactly on the zero mark.

## Step 14



- To tune the other melody string, simply repeat this process.

Follow the steps, and your shahi baaja will be in tune.