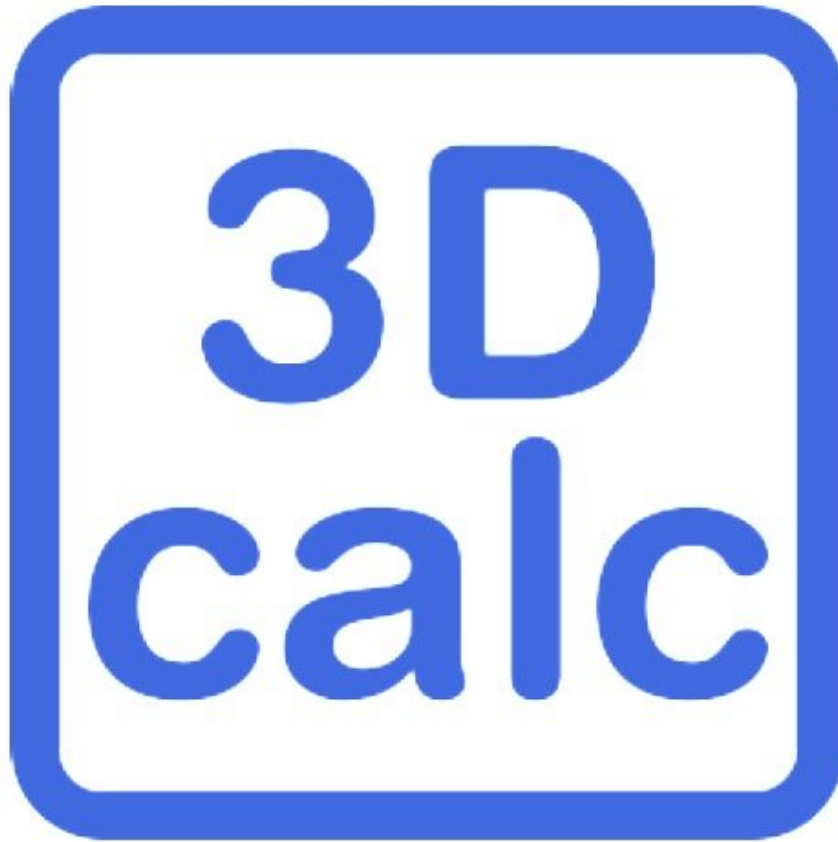




How to set up and use 3DCALC Software

This guide will help you to set up a 3DCALC Software - Unique application for calculations of total 3D printing costs for makers.

Written By: custom.3d.services



INTRODUCTION

3DCALC Software

is a unique application for calculations of total 3D printing costs for makers. This guide will help you to set up everything in a few easy steps.

TOOLS:

- [Microsoft windows 7 \(or later\)](#) (1)
 - [wkhtmltopdf tool to render HTML into PDF](#) (1)
 - [3DCalc Software](#) (1)
-

Step 1 — Getting Started



- Start with downloading of the application demo (you can convert it to full version in Step number 2)
- [Download App Here](#)

 Before starting to use software please read our disclaimer: [Disclaimer](#)

Step 2 — How to get a full version

The screenshot shows the 3DPrintCalc website's 'Buy a Coffee' page. The top navigation bar includes 'Log in', 'Explore', 'Features', 'Gold', 'Blog', and a 'Start a Page' button. The main section is titled 'Buy a Coffee for 3DPrintCalc' and features a quantity selector (1), a price of €3 each (total: €3), and input fields for 'Your message' and 'Your name (optional)'. There is a 'Private message' checkbox and a disclaimer about terms and privacy policy. A red 'Support Now' button is at the bottom, with a yellow arrow pointing to it. To the right is a Ko-fi widget. Further right is the PayPal payment interface, which includes a 'Log In' button, a 'Pay with debit or credit card' option, and a 'PayPal is a safer, faster way to pay' message.

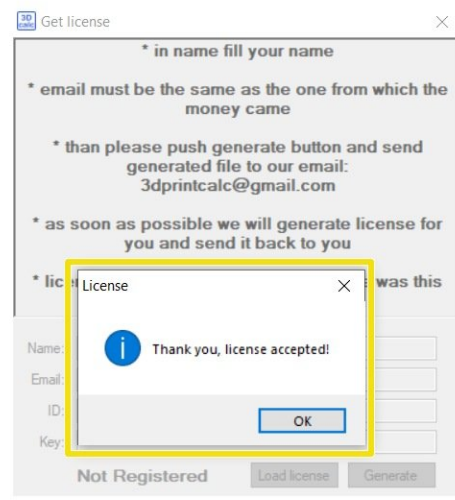
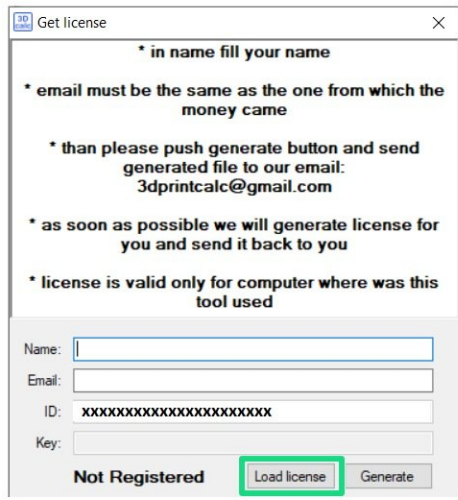
- The full version of the app will be given to everybody who will buy a "coffee" to developers - visit <https://www.ko-fi.com/3dprintcalc> website
 - Fill your email (Will be used for software registration and for access to download repository)
 - Fill your name
 - Click on the button - you will be redirected to payment method selection
 - You can select between PayPal or Card payment
- ⚠ Double-check your email address!

Step 3 — Licencing First Step

The image shows two screenshots. The left screenshot is the main '3D print price calculation' window. It has a menu bar with 'Menu' and 'Invoice texts'. The 'GET LICENSE' button is highlighted in the top right. The window is divided into several sections: 'Customer detail' (Customer, Description), 'General print details' (Printer, Filament, Length, Printing time, Resolution), 'Preparation' (Model preparation, Slicing, Material change, Transfer and Start, Total), 'Post-processing' (Job removal, Support removal, Additional work, Total), 'Costs' (Filament, Electricity, Printer depreciation, Preparation, Post-processing, Consumables, Subtotal, Including failures, Suggested price, Including discount), and 'Product image'. The right screenshot is a 'Get license' dialog box. It contains instructions: '* in name fill your name', '* email must be the same as the one from which the money came', '* than please push generate button and send generated file to our email: 3dprintcalc@gmail.com', '* as soon as possible we will generate license for you and send it back to you', and '* license is valid only for computer where was this tool used'. It has input fields for Name, Email, ID (pre-filled with 'xxxxxxxxxxxxxxxxxxxxxxxx'), and Key. At the bottom, there are buttons for 'Not Registered', 'Load license', and 'Generate' (highlighted with a yellow box).

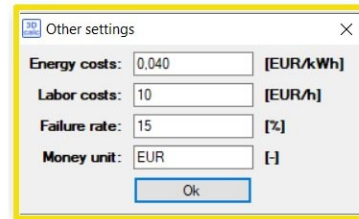
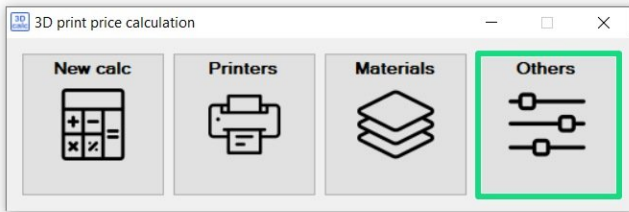
- After you proceed the payment you will get an email with access to download repository
- ❗ It usually takes a few hours until an email is delivered.
- Open application (3DPC.exe) and click on button
- Fill your Name (same as in Step 1 —Downloading of application)
- Fill your Email (same as in Step 1 —Downloading of application)
- Click on button
- File *license.xml* will be generated. Send it via email to **3dprintcalc@gmail.com**

Step 4 — Licencing Second Step



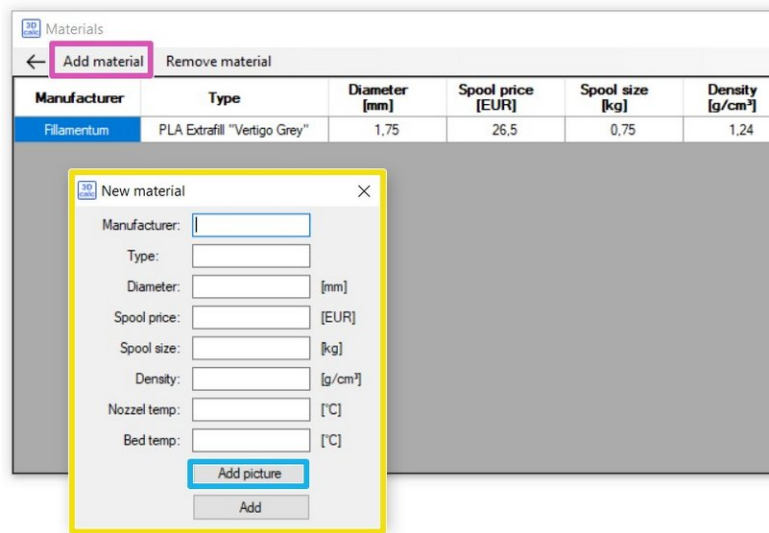
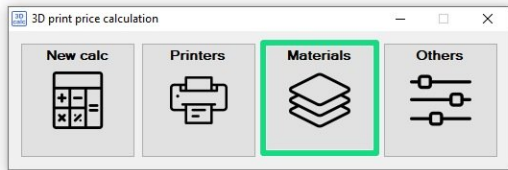
- After you will get authorized license save it and then load it by clicking on the button
- If your license is accepted, a notification will pop up
- ⚠ Note that license is hardware locked (It is usable only on the computer when was licensing proceeded).
- ℹ License migration between computers is viable if needed - don't hesitate contact support


Step 5 — Set application to your needs: Others tab



- Firstly click on *Others* setting
- Fill all the setting:
 - **Energy costs:** *The estimated electric consumption of 3D printer*
 - **Labor costs:** *Stands for all time-consuming activities of the 3D printing process (except printing time itself), such as CAD operations, Slicing, Support removal, etc.. Will be shown in detail later*
 - **Failure rate:** *The estimated average failure rate of 3D printing process*
 - **Money unit:** *Your preferable currency*
- ① You can change all these settings anytime later

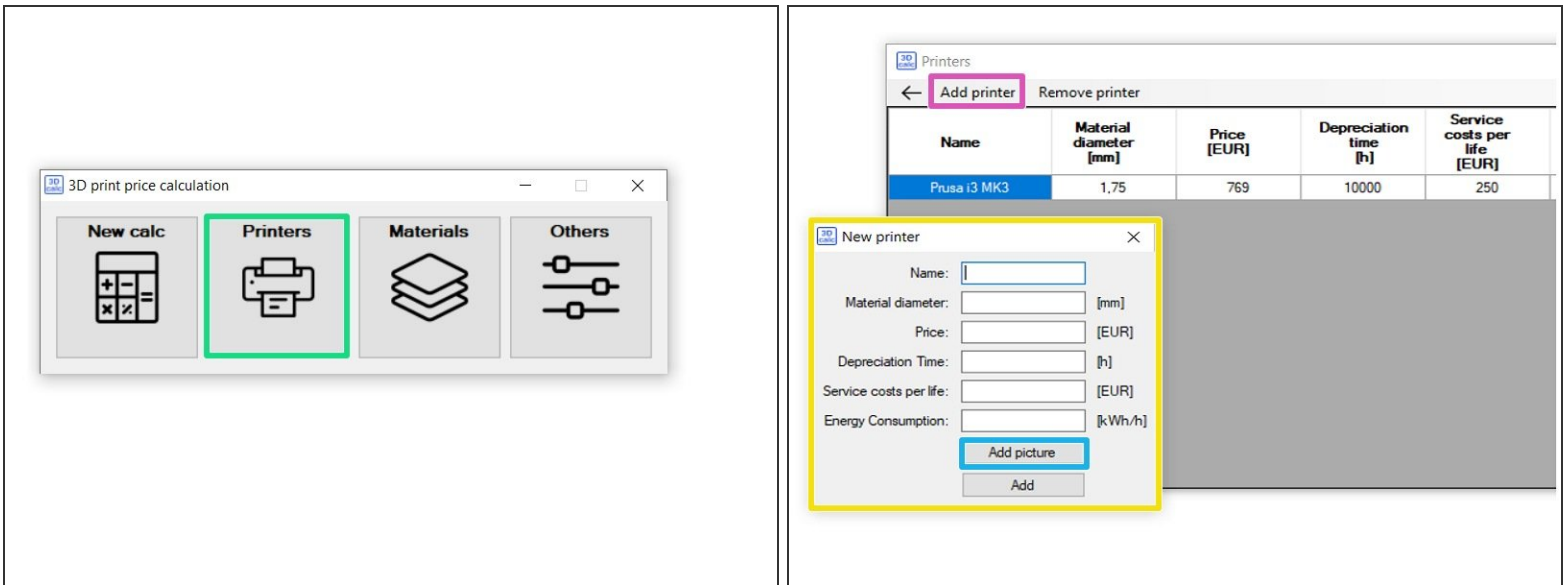
Step 6 — Set application to your needs: Materials tab



 **Materials** Tab is a library of your fillaments

- Firstly click on *Materials* setting
- Click for *Add material*
- Fill all the setting:
 - **Manufacturer:** *Name of filament manufacturer / brand name*
 - **Type:** *Type and color of filament*
 - ... rest of settings are self-explanatory
- You can also add a picture of a filament/spool (It can be used in an invoice later). Recommended resolution is 360/360 px

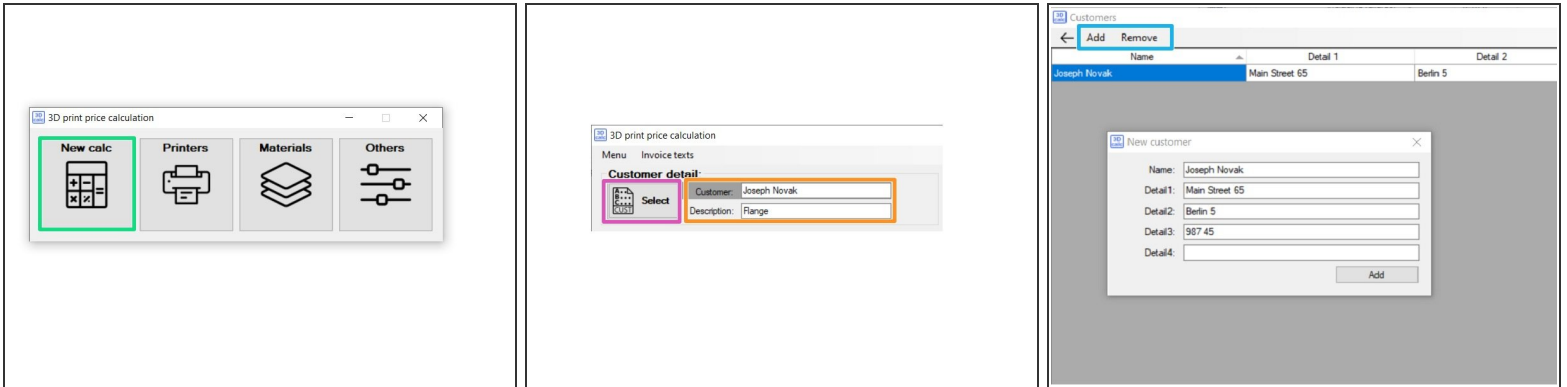
Step 7 — Set application to your needs: Printers tab



i *Printers* Tab is a library of your printers

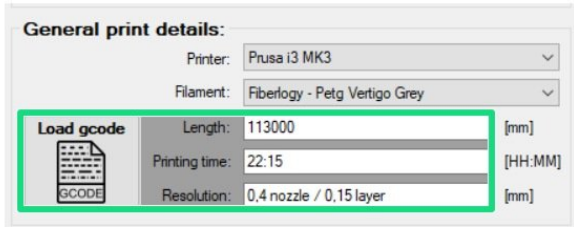
- Click on *Printers* setting
- Click for *Add printer*
- Fill all the setting:
- You can also add a picture of a printer (It can be used in an invoice later). Recommended resolution is 360/360 px



Step 8 — Creating a New Calc: Customer detail and Invoice texts



- Click on *New calc*
- In *Customer details* tab fill Customer initials and Description of printed model
- You can also keep your Customers details in your address book (click on *Load* button)
- In your adress book you manage your customers simply via *Add* and *Remove* buttons

Step 9 — Creating a New Calc: General print details



- Select **Printer** from your list as well as **Filament**
 - Fill all details: **Length** of used filament, **Printing time** spent and you can also fill your printing **Resolution** (nozzle dia, speed/quality/detail/draft print setting)
-  You can also **Load gcode** of your sliced model and mentioned information will be filled automatically
-  **Load gcode** is a new version and was tested mainly with PrusaSlicer. If a system can't load gcode details from your Slicer let us know and we will do our best to make it compatible

Step 10 — Creating a New Calc: Preparation

Preparation:

| | | |
|-------------------------------------|---------------------------------|-------|
| Model preparation (Fixing, CAD...): | <input type="text" value="47"/> | [min] |
| Slicing (Supports, Parameters...): | <input type="text" value="5"/> | [min] |
| Material change: | <input type="text" value="10"/> | [min] |
| Transfer and Start: | <input type="text" value="2"/> | [min] |
| Total: | <input type="text" value="64"/> | [min] |

- In this section, you can include all your time-consuming activities you make during print preparation. Each row is a self-explanatory

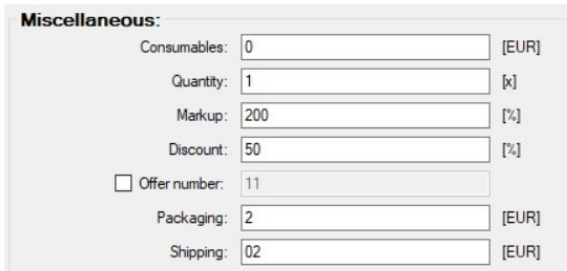
Step 11 — Creating a New Calc: Post processing

Post-processing:

| | | |
|------------------|---------------------------------|-------|
| Job removal: | <input type="text" value="5"/> | [min] |
| Support removal: | <input type="text" value="15"/> | [min] |
| Additional work: | <input type="text" value="0"/> | [min] |
| Total: | <input type="text" value="20"/> | [min] |

- In this section, you can include all your time-consuming activities you make during post processing. Each row is a self-explanatory

Step 12 — Creating a New Calc: Miscellaneous

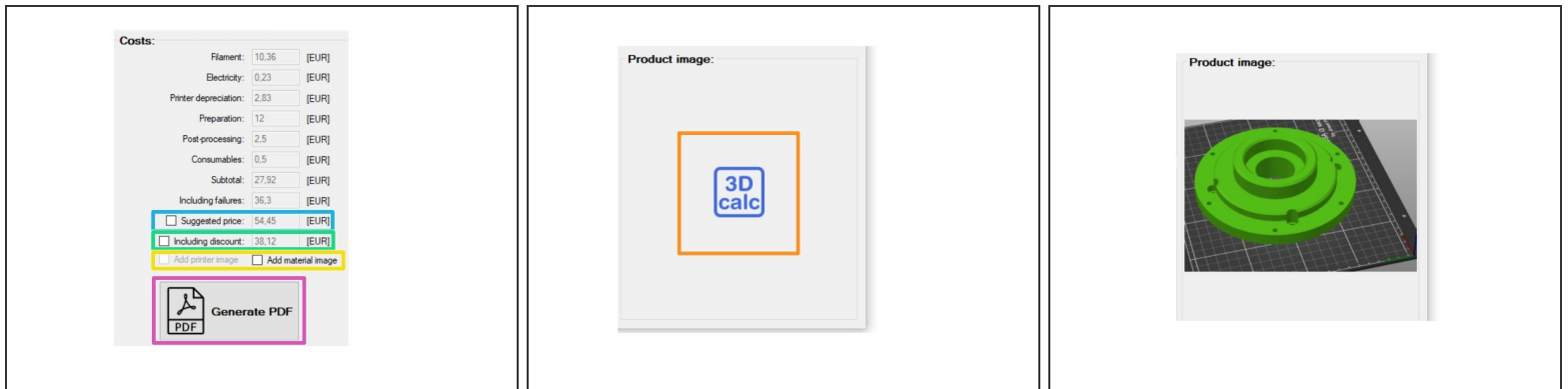


Miscellaneous:

| | | |
|--|-----|-------|
| Consumables: | 0 | [EUR] |
| Quantity: | 1 | [x] |
| Markup: | 200 | [%] |
| Discount: | 50 | [%] |
| <input type="checkbox"/> Offer number: | 11 | |
| Packaging: | 2 | [EUR] |
| Shipping: | 02 | [EUR] |

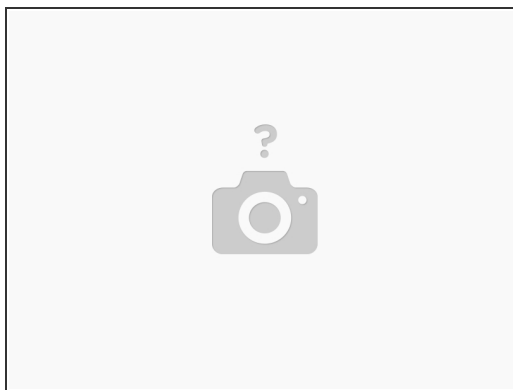
- **Consumables:** Price of consumables used during the printing process (glues, cleaners, sanding stuff...)
- **Quantity:** If you are printing more than 1 piece, costs evaluated in **Preparation** section will be divided by the number of printed pieces.. (e.g. time needed to prepare the model for printing is spread equally to all printed copies)
- **Markup:** Multiplies the calculated costs. (e.g. If calculated costs are 37 EUR and Markup is set to 200% total price will be 74 EUR) Default 100%
- **Discount:** Discount for your customer. (0% stands for no discount, 100% for maximum discount e.g. total price is 0) Default 0%
- **Offer number:** You can use this information in an invoice. You can write your own, use default (automatically numbered) or do not use it at all
- **Packaging and Shipping:** You can include costs for packaging and shipping


Step 13 — Costs overview and an invoice generation



- You can check calculated costs for each category
- By checking the box you can retype calculated value
- By checking the box you can retype calculated value
- You can add material or printer image in your invoice (as mentioned in previous steps)
- We recommend to also add a **Product image** , click on the logo and select your picture
- This is it! Click the button and you are done :)

Step 14 — Support & Bug fixes



 This software is still a beta, so if you figure something out, just let us know.

To reassemble your device, follow these instructions in reverse order.