



Hp 15-f305dx Wifi Card Replacement

This guide illustrates the replacement of the wifi card for a HP 15-f305dx laptop.

Written By: Garrett Peal






TOOLS:

- [Phillips #00 Screwdriver](#) (1)
- [plastic/non conductive tweezers \(optional\)](#) (1)

Step 1 — Battery



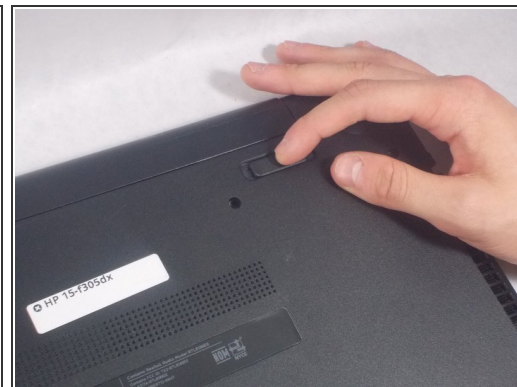
 Turn off the computer. If you are unsure whether the computer is off or in Hibernation, turn the computer on, and then shut it down through the operating system.

Step 2



- Turn the computer upside down on a flat surface.

Step 3



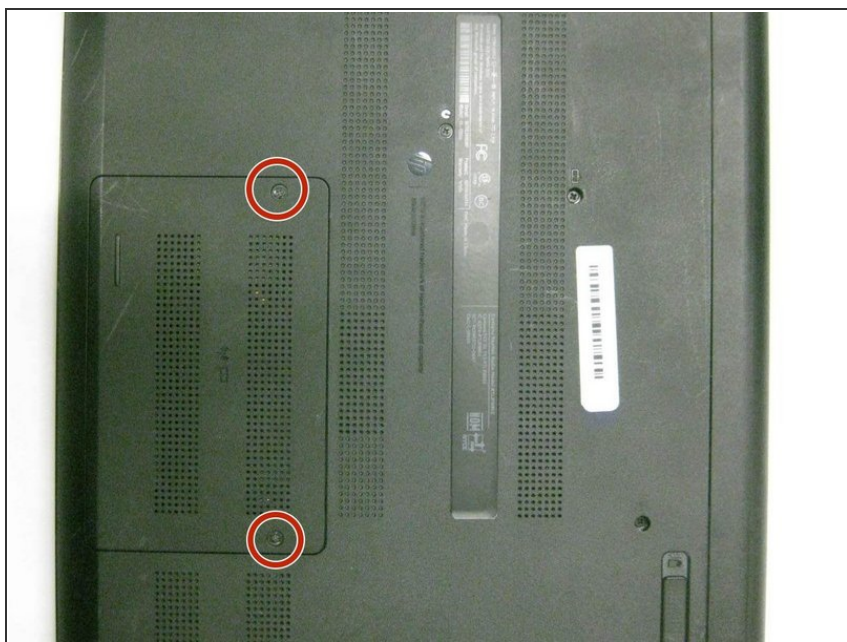
- Firmly slide the release latch to unlock the battery and slide the battery release latch to release the battery.

Step 4



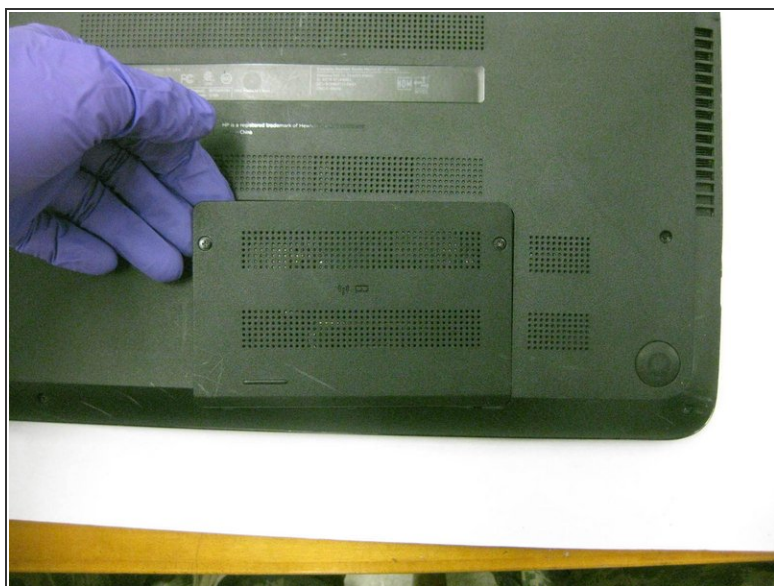
- Lift the battery from the middle and then pivot it outward to remove it from the comp.

Step 5 — Wifi Card



- Unscrew two 5mm Phillips #00 screws on the back service cover.

Step 6



- Remove the service panel.

Step 7



- Remove a single 5 mm Phillips #00 screw holding the wifi card in place.

Step 8



- Remove the black and white cable connections by prying the connections up with a spudger.
- ① They should "pop" off of the card.

Step 9



- Using your fingers, gently remove the wifi card from the laptop by sliding it outward from its port.

To reassemble your device, follow these instructions in reverse order.