



# Huawei Ascend G610 Display Assembly Replacement

Complete replacement of the assembled frame and touch screen display.

Written By: Smilzo



# INTRODUCTION

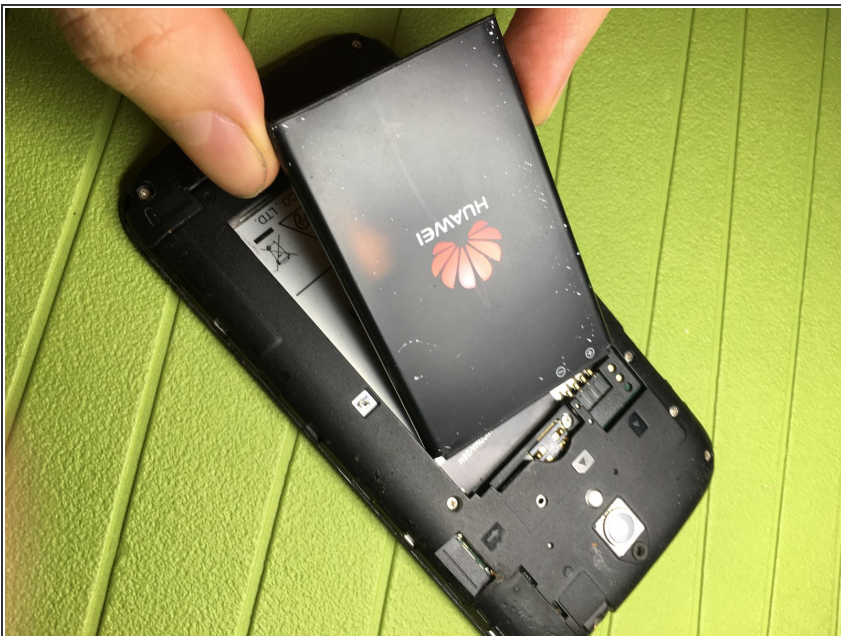
Complete replacement of the assembled frame and touch screen display.

## Step 1 — Display Assembly



- Remove the back cover.

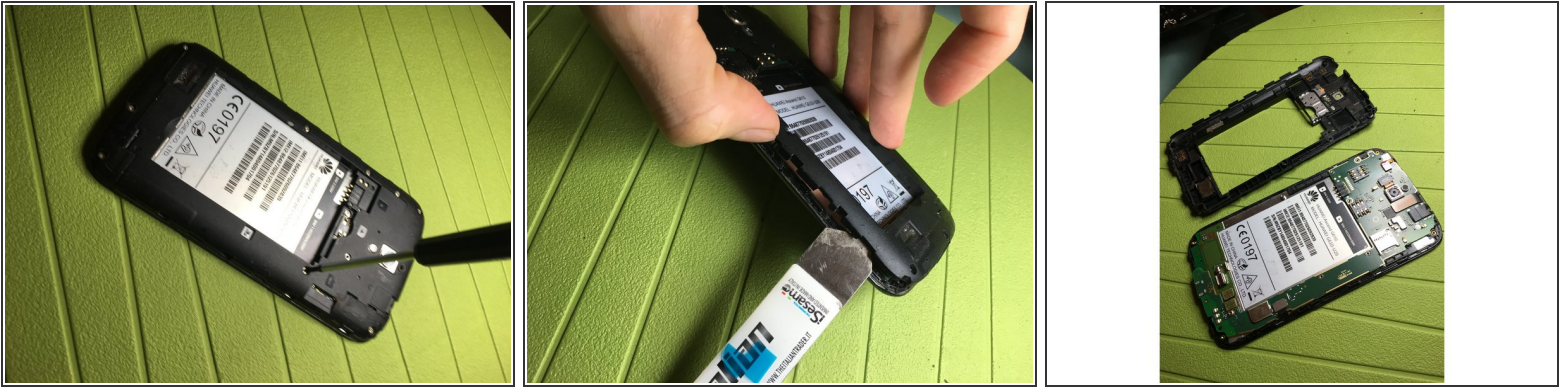
## Step 2



- Remove the battery.



## Step 3



- With the help of a cross-head screwdriver, remove the 9 side screws that secure the back cover.
- Note: 1 of these screws is covered by an adhesive label.
- Remove the central screw next to the SIM card slot. Note: it's the shortest screw.

## Step 4



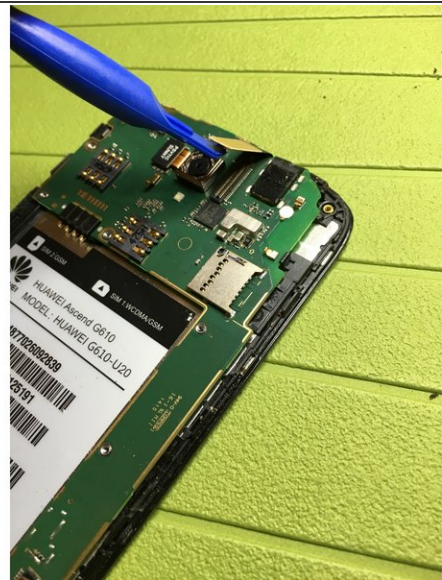
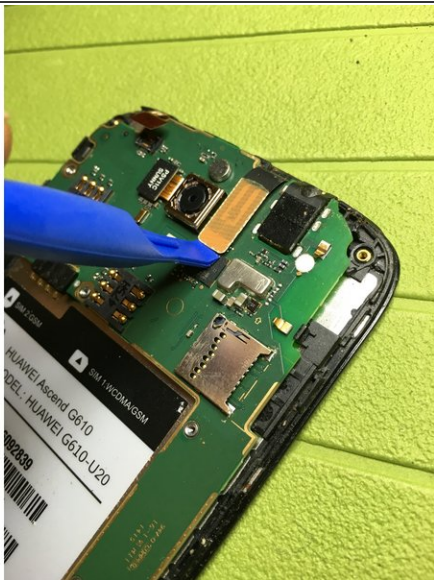
- Disconnect the display connector.

## Step 5



- Disconnect the ambient light sensor.

## Step 6



- Unplug the touch screen connector.



## Step 7



- Unplug the connector that joins the two boards.

## Step 8



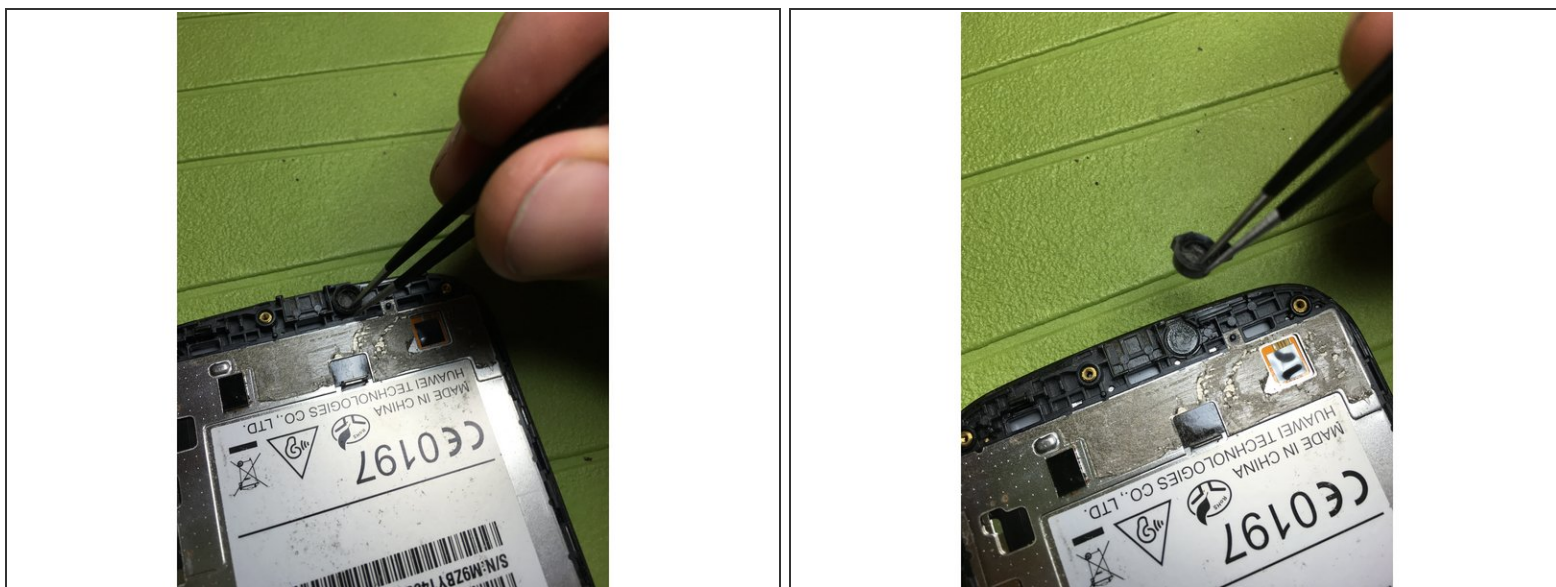
- Unplug the main motherboard that is secured at 3 points.

## Step 9



- With the help of a heater, heat the board attached with double-sided adhesive tape.
- With a thin tool, gently pry underneath the adhesive until it is fully detached.

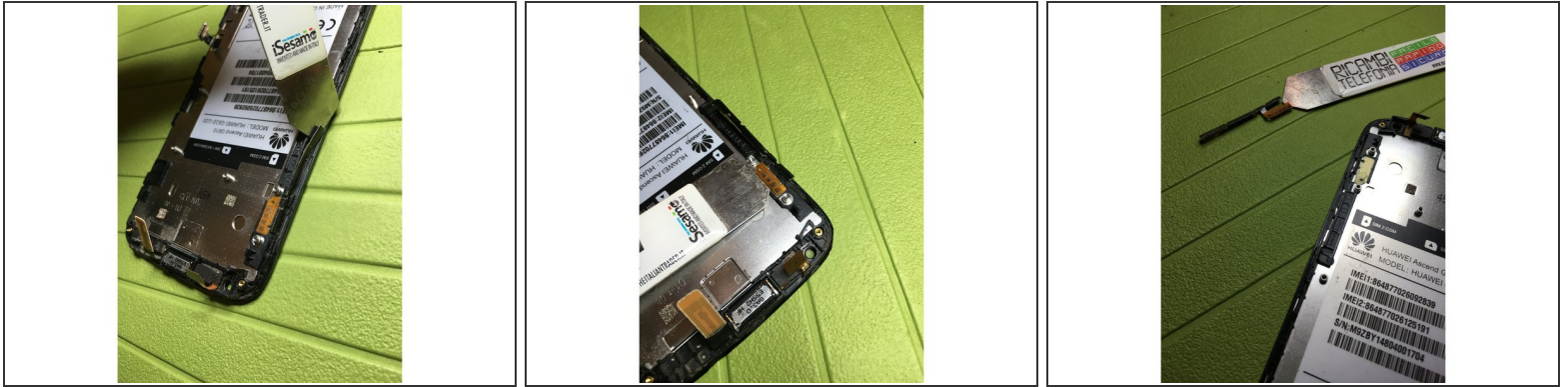
## Step 10



- Remove the housed microphone.



## Step 11



- Using the phone for leverage, remove the flat volume keys and turn off the device.

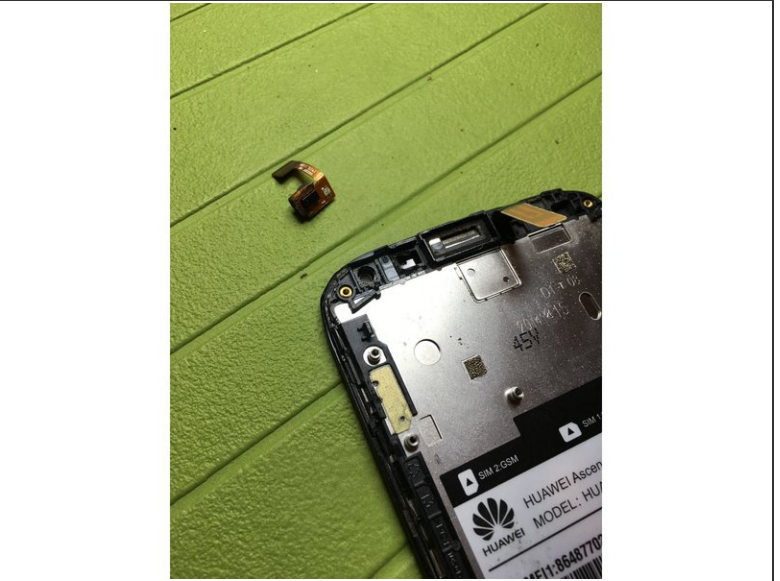
## Step 12



- Remove the speaker.

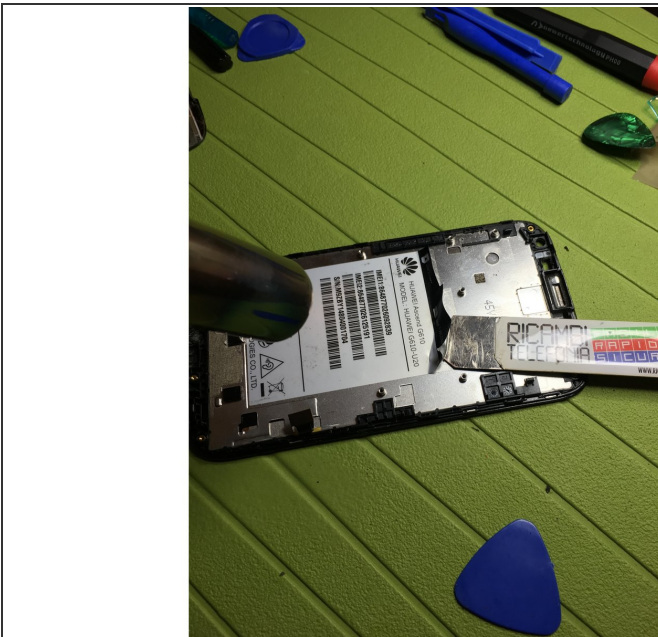


## Step 13



- Remove the ambient light sensor.

## Step 14



- Remove the unique adhesive label on the phone.

## Step 15



- Now, reassemble the pieces on the new display assembly with the frame and touch screen by reversing the steps of this guide.

To reassemble the device, follow these instructions in reverse order.