



# Huawei Ascend G7 Display Assembly Replacement

Written By: Andrea Murinu



# INTRODUCTION

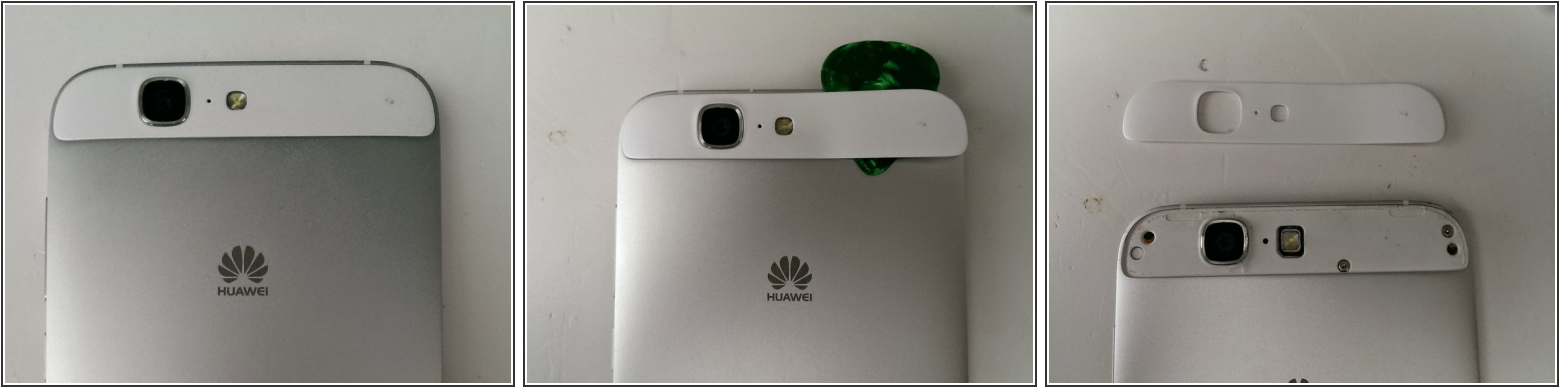
Huawei Ascend G7 is not difficult to take apart, but some parts are glued and need attention



## TOOLS:

- [iFixit Opening Tools](#) (1)
  - [Tweezers](#) (1)
  - [Phillips #1 Screwdriver](#) (1)
-

## Step 1 — Remove upper frame casing



- Under the top frame there are 3 screws. The frame is glued. Heat without exaggerating the frame and lever to disengage.

## Step 2 — Remove the 3 screws



- Remove the 3 screws

### Step 3 — Removing lower frame casing



- Under the Lower frame there are three screws. The frame is glued. Heat without exaggerating the frame and lever to disengage.
- This is the same as removing as removing the upper frame casing

### Step 4 — Removing the screws of the lower casing



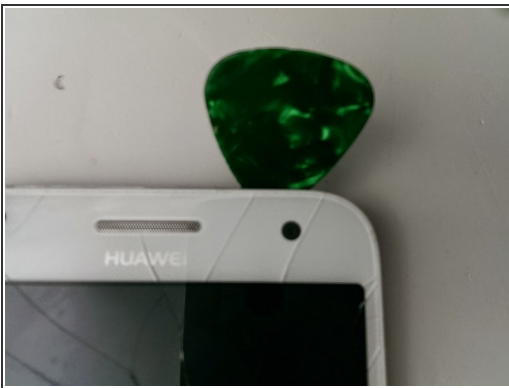
- Removing the 3 screws

## Step 5 — Remove the sim and sd card



- Remove the door of Sim
- Remove the cover of the SD Card.

## Step 6 — Removing the bottom



- Use a prying tool to pry the display away from the back case.
- ⓘ Be careful not to lose the volume buttons and the power button.

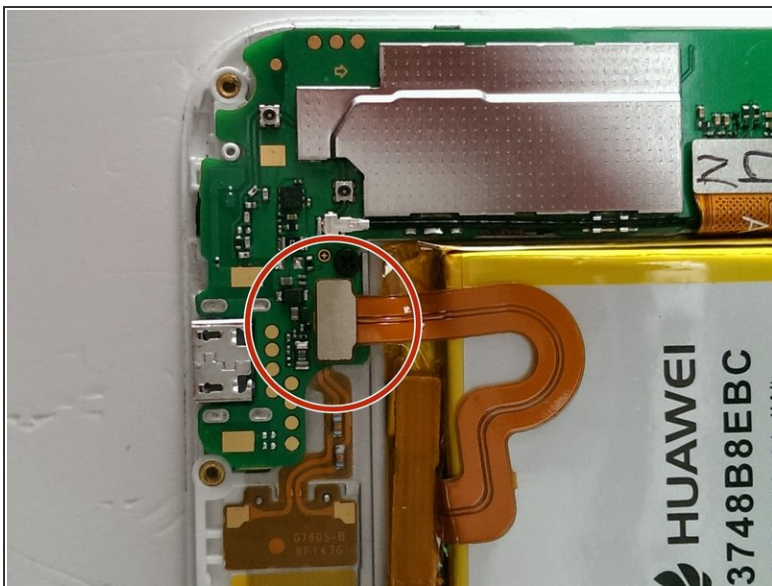


## Step 7



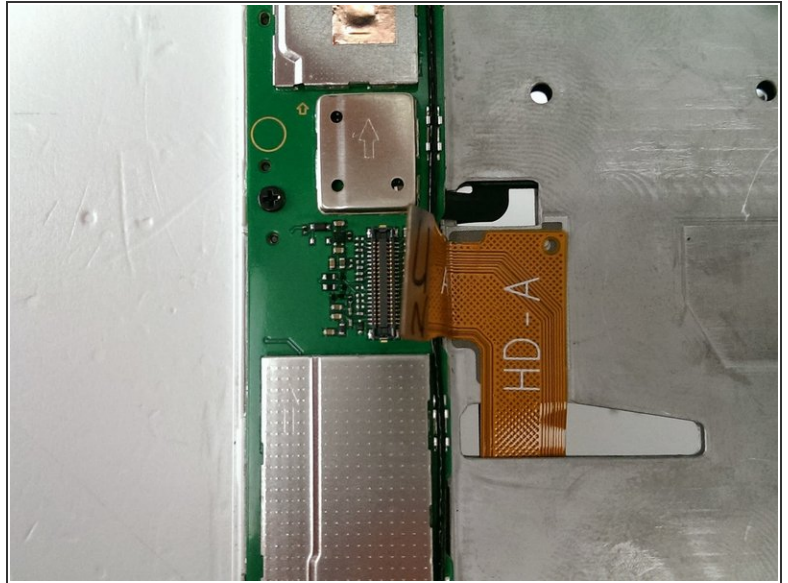
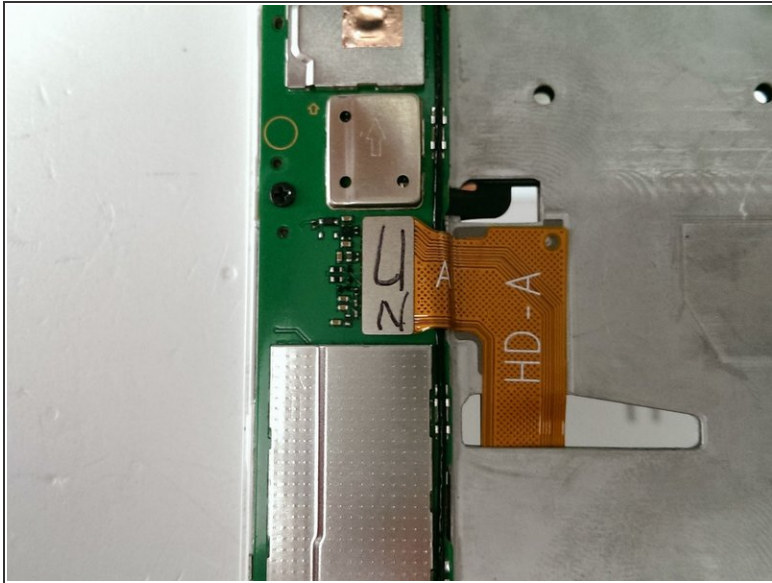
- The disassembled smartphone with the aluminum back removed

## Step 8 — Removal Of Battery



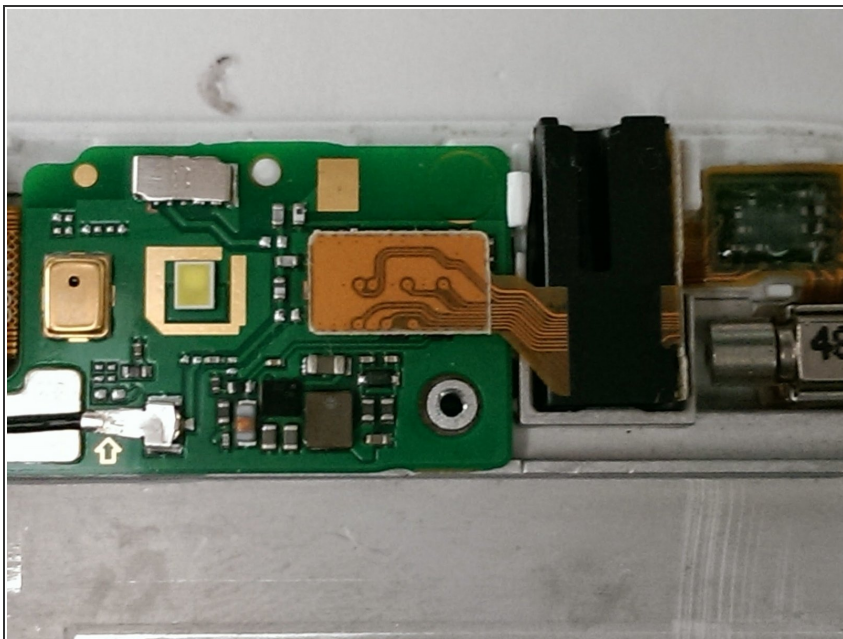
- Disconnect the battery connector.
- If The battery is stuck, remove it very carefully.

## Step 9 — Disconnect video connector



- Disconnect the video connector gently.

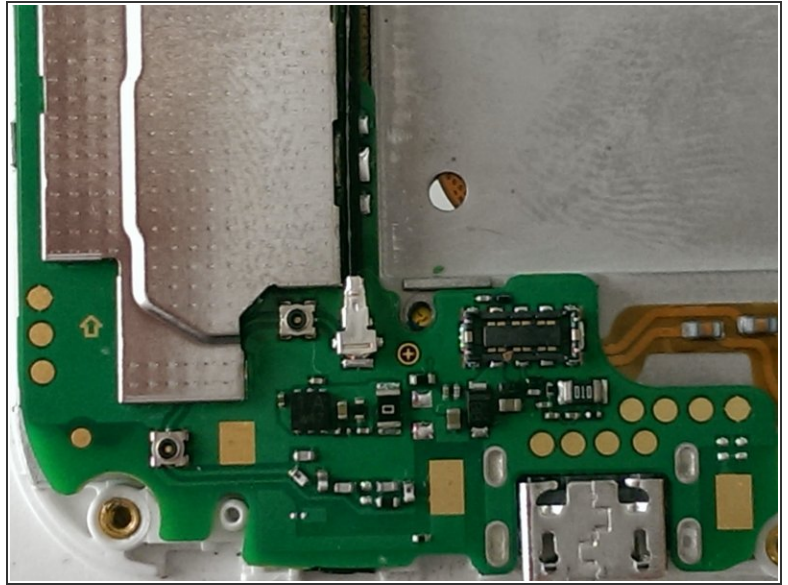
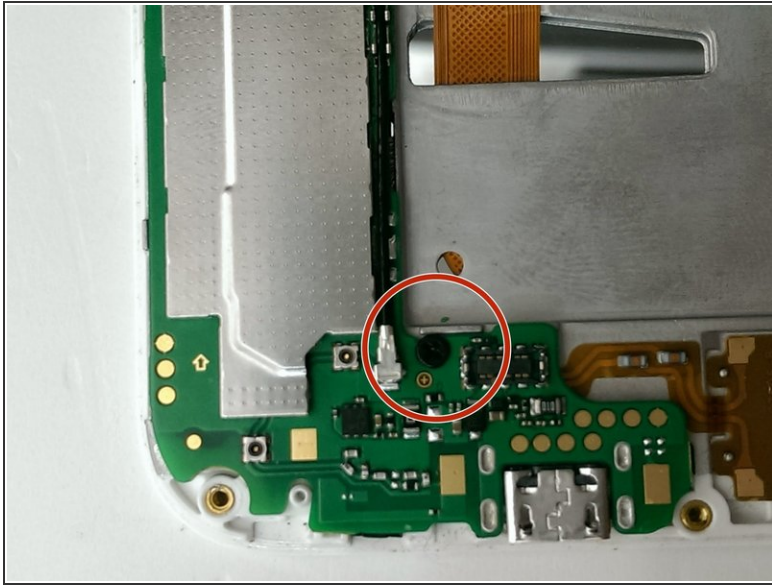
## Step 10 — Headphone Connector



- Gently unplug the headphone connector.

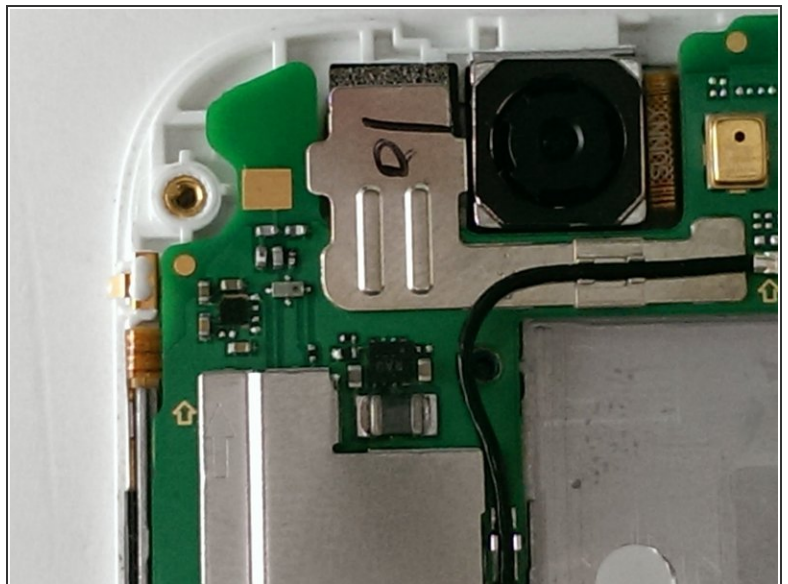
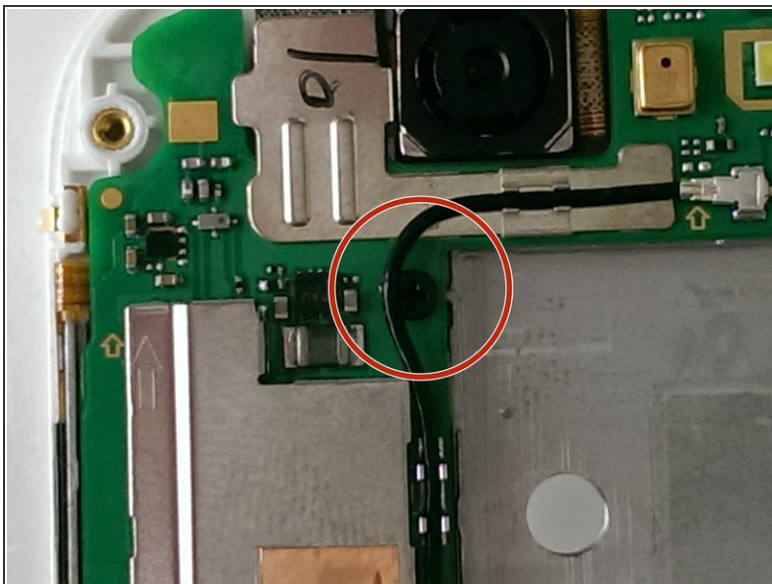


## Step 11 — Remove screw



- Remove the screw at the bottom.

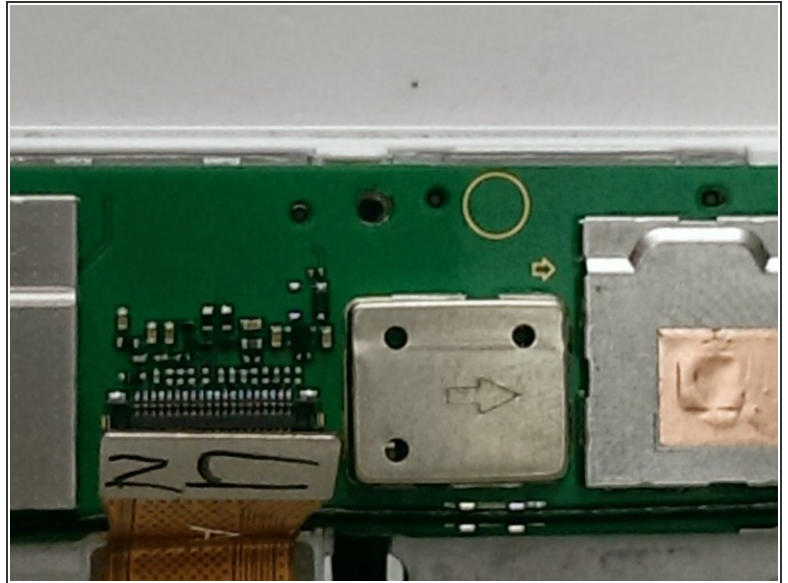
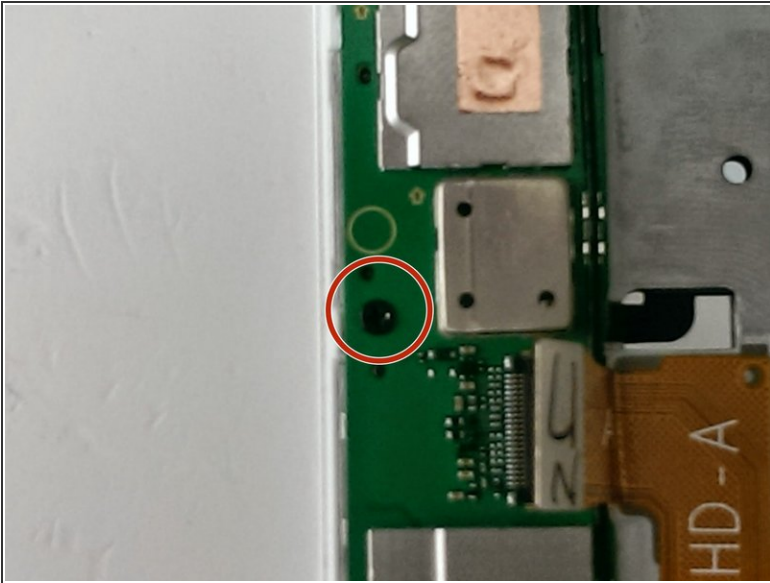
## Step 12 — Remove the screw



- Remove screw from the top

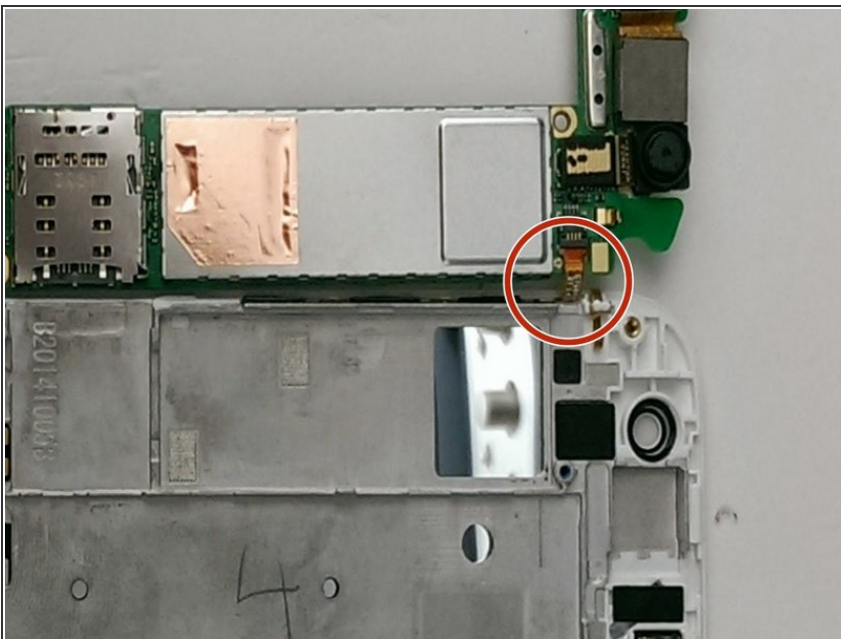


## Step 13 — Remove the screw



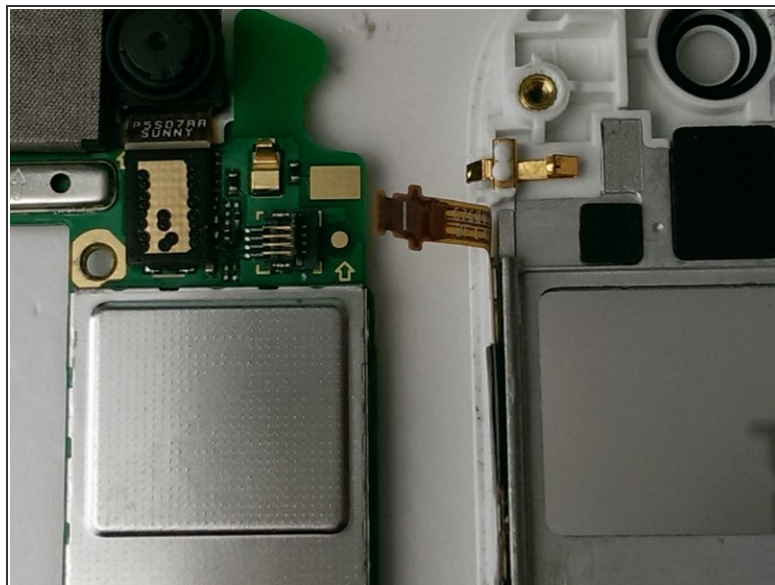
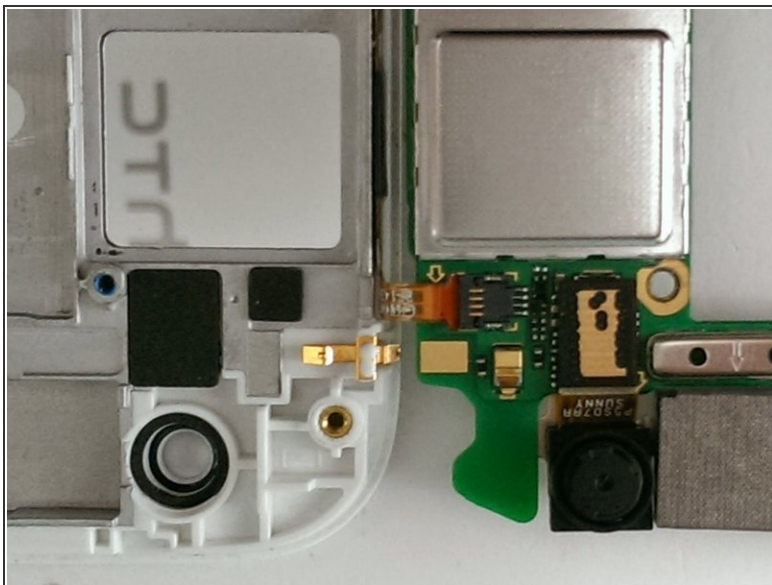
- Remove the screw next to the video connector.
- You're almost to the finish line! Just 3 more steps to go.

## Step 14 — Mainboard



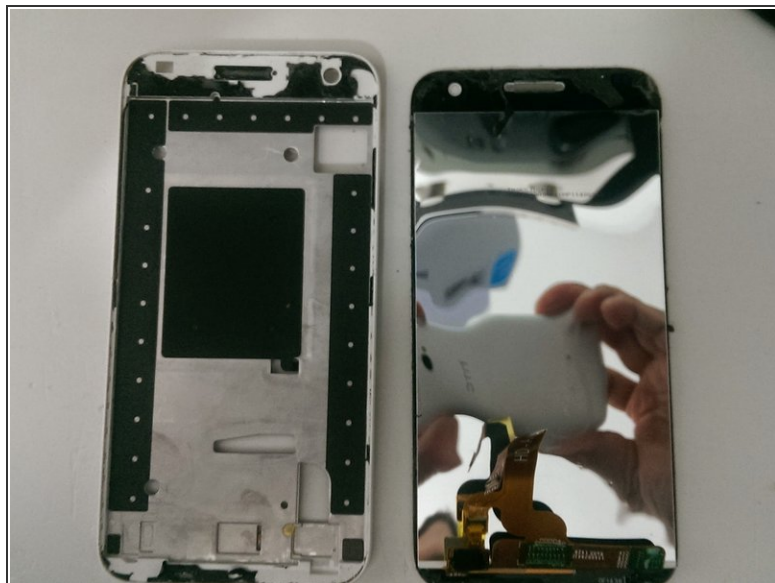
- Gently rotate outside the motherboard, making sure not to break the little indicated connector

## Step 15 — Connector



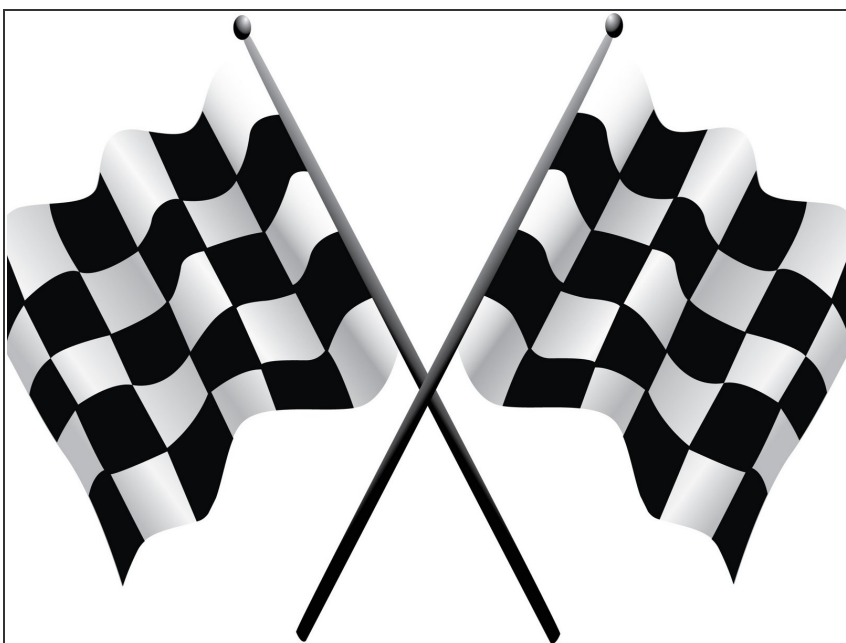
- If your new display assembly comes with this ribbon cable already installed, disconnect the old one now.
- ☒ If not, separate this part from the old display and transfer it to the new one.

## Step 16 — Removal of the display and the touch screen



- Heat the front.
- Using a plastic tool to separate the lock display / touch screen from the main body.

## Step 17



- You have completed the repair.



To reassemble your device, follow these instructions in reverse order.