



Huawei Ascend P6-U06 Battery Replacement

Replace the Huawei Ascend P6-U06 battery.

Written By: Chase Hemming



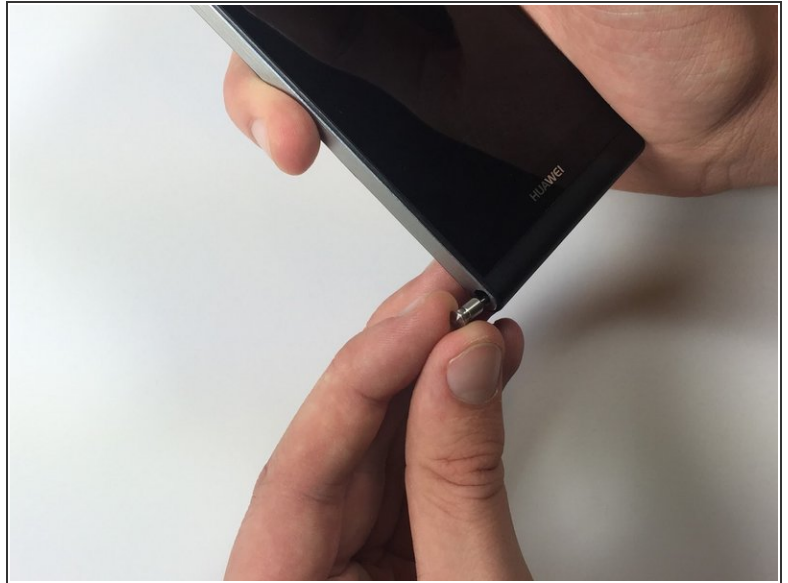
INTRODUCTION

Replace your dying battery to bring the power back to your Phone.

TOOLS:

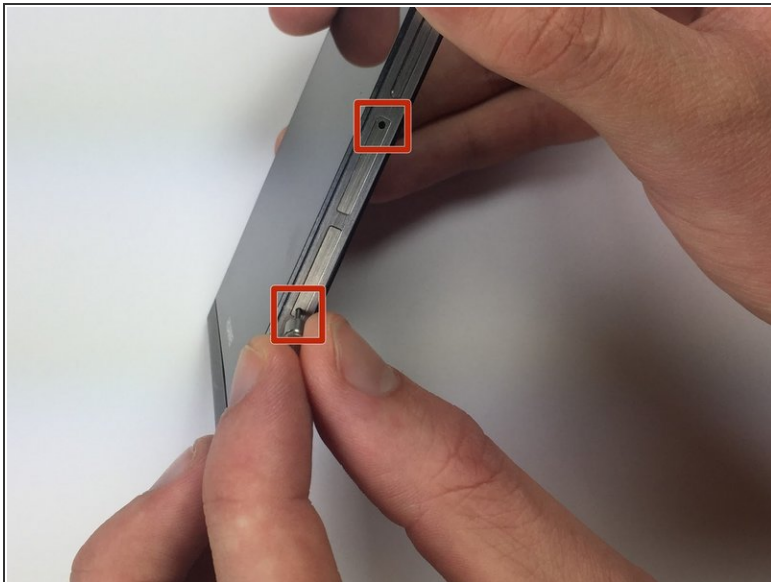
- [Phillips #000 Screwdriver](#) (1)
 - [iFixit Opening Tools](#) (1)
 - [Spudger](#) (1)
-

Step 1 — SIM Card



- Pull and twist the pin near the bottom left-side of the phone to remove it from the headphone jack.

Step 2



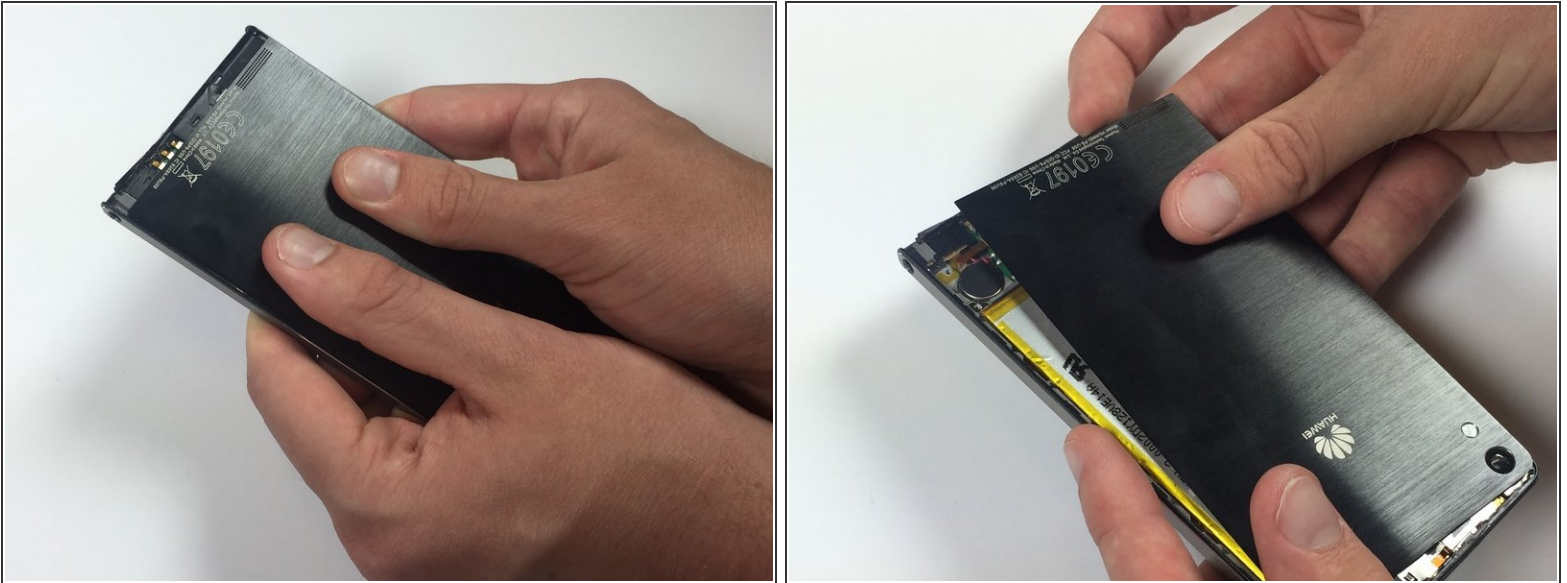
- Insert the pin into the SIM card opening located on the right-side of the phone.
- Gently push in until the SIM card clicks, and then pull the pin and SIM card out.
- Repeat this process for the additional SIM card.

Step 3 — Back Panel



- Firmly push down on the black plastic covering at the bottom of the phone, and pull down.
- ⓘ You may need a sharp thin object to get underneath the plastic.

Step 4



- Rotate the phone 180 degrees so that the bottom of the phone is now facing up.
- Firmly push up on the back panel with your thumbs.
- Lift up the back panel from the top right corner and gently pull it away from the phone.

Step 5 — Battery



- Remove the following screws securing the logic board to the main frame:
 - Five 2mm Phillips #000 screws
 - Two 2.5mm Phillips #000 screws

Step 6



- Push down the yellow plastic lining at the top of the battery and remove the two 2.5mm Phillips #000 screws.

Step 7



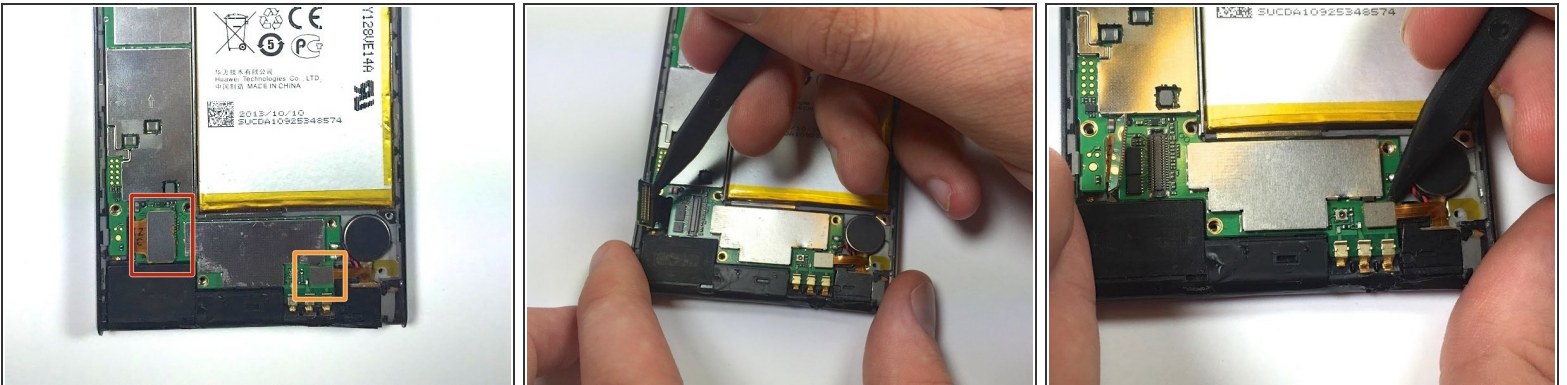
- Use the flat end of a spudger to gently snap open the first clip located on the the right arm of the retaining plate.
- Use the flat end of a spudger to gently snap the second clip located on the left arm of the retaining plate.
- Use the flat end of a spudger to gently lift the upper retaining plate from the phone.

Step 8



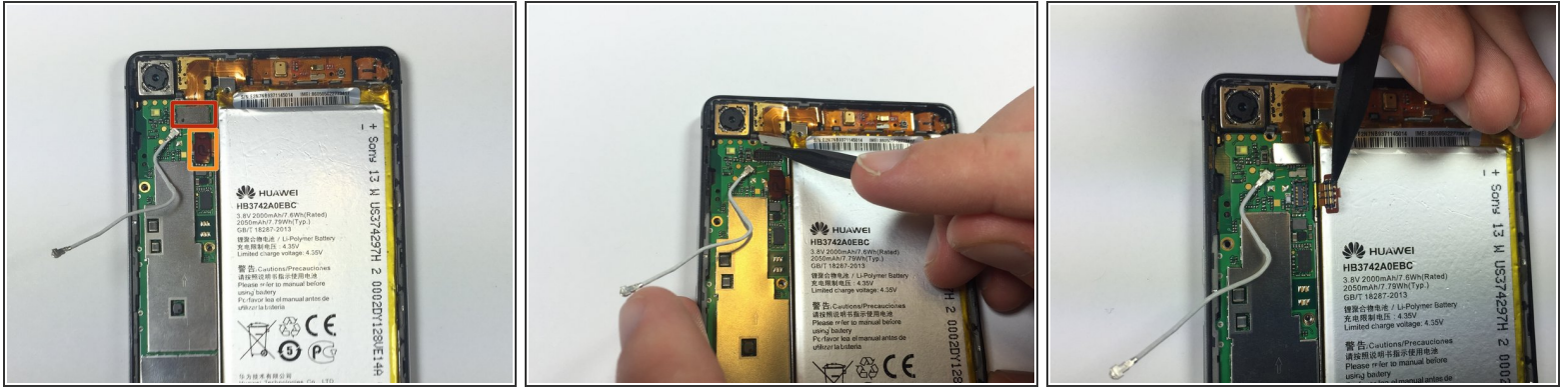
- Use the pointy end of a spudger to pry the antenna connector off of its socket.
- ☑ Upon reassembly, you will hear a "click" that indicates the pin has been properly reconnected.

Step 9



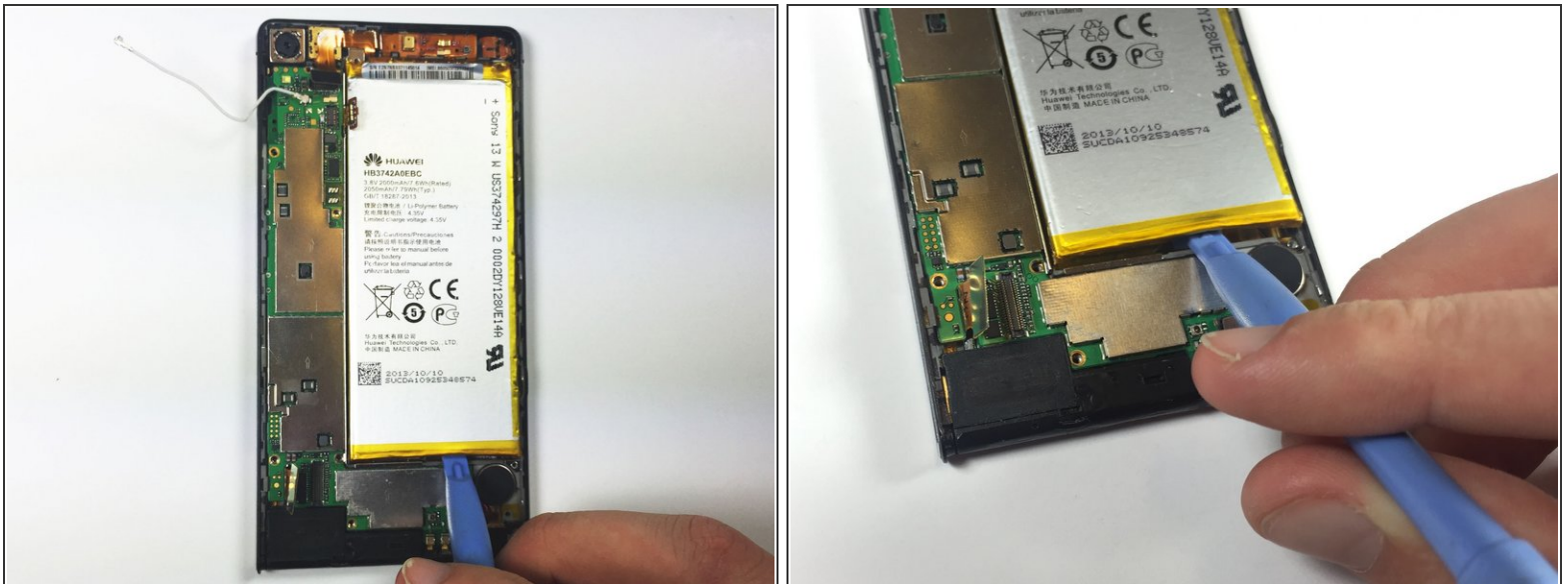
- Use the pointy end of a spudger to gently pry the following connectors out of their sockets:
 - silver LCD cable connector
 - silver Headphone jack cable connector

Step 10



- Use the pointy end of a spudger to gently pry the following connectors out of their sockets.
 - Sliver Micro-USB cable connector
 - Copper battery cable connector

Step 11



⚠ Be careful not to bend, puncture, or crush the battery, even if it is being replaced. The battery can potentially release toxic and flammable chemicals.

- Use a plastic opening tool to gently lift up the battery from the bottom end.
- i** You may need to loosen the adhesive under the battery with slow sawing motions.

To reassemble your device, follow these instructions in reverse order.