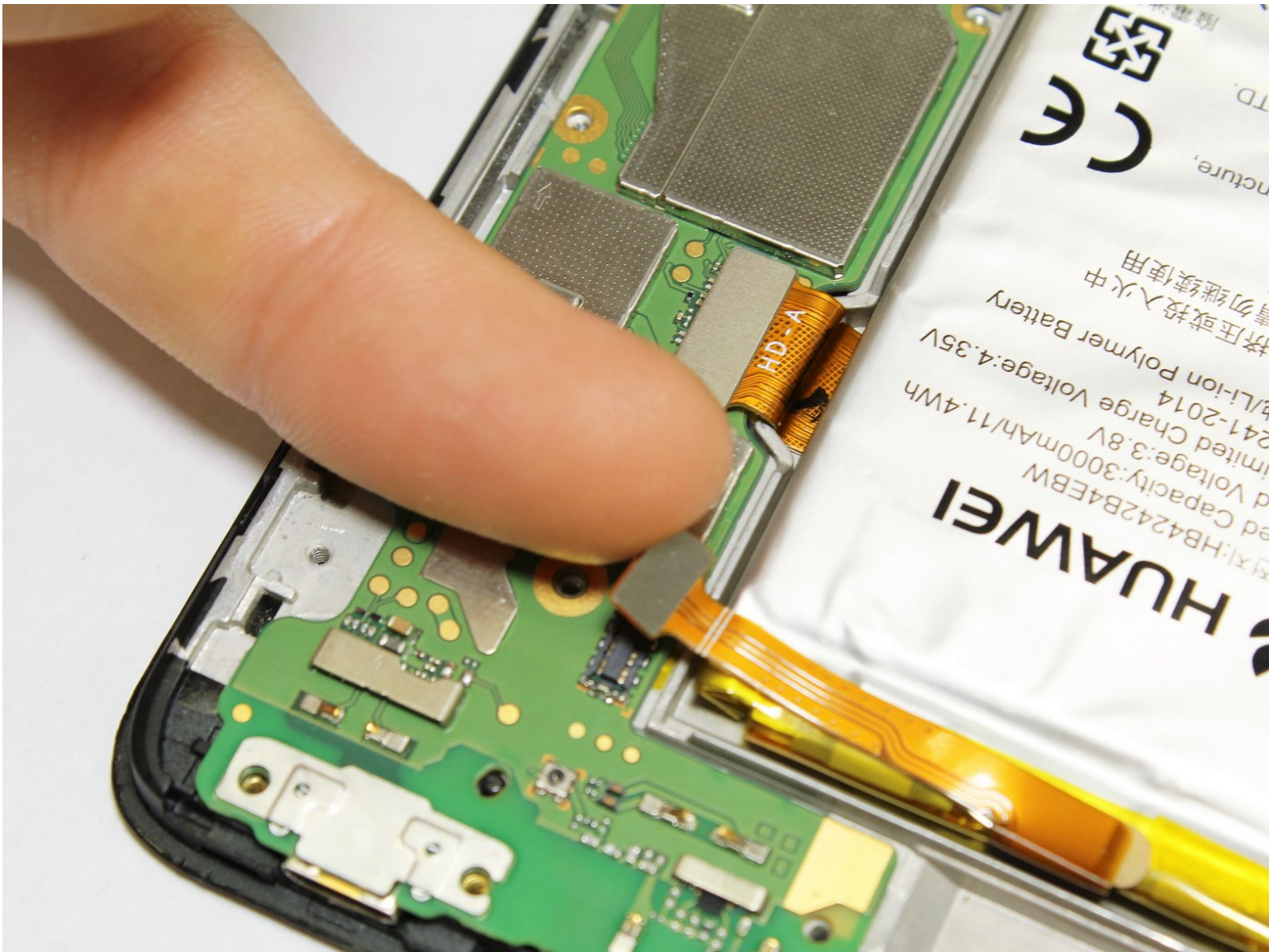




Huawei Ascend XT Battery Replacement

This guide will accomplish the replacement of the Huawei Ascend XT Battery.

Written By: Jimmy Shields



INTRODUCTION

In this guide, you will be shown how to disassemble the phone and remove the faulty battery so that you can replace it with a new one. You must have a new battery ready to complete this guide. Be sure to use only the parts shown in the guide, and follow the directions carefully as to not damage the device. The device must be shut off before starting this guide.

The following tools will be needed for this replacement:

- Spudger
- Opening tool
- 0.8 SIM Eject Bit
- Bit Driver
- Phillips head bit



TOOLS:

- [Spudger](#) (1)
 - [iFixit Opening Tools](#) (1)
 - [SIM Card Eject Tool](#) (1)
-

Step 1 — Battery



- Use the 0.8 Sim driver bit to remove the SIM tray by inserting it into the hole on the side of the device.
- Once the hole is pressed in firm, the SIM tray will pop out. This allows you to grab it, and extract it from the device.

Step 2



- Make a thumbs-up and use it to grip the plastic opening tool with the flat end pointing in the direction of your thumb.
- Place the flat end of the opening tool slightly inside the charging port and place your thumb on the back of the phone.
- Press into the phone with your thumb while pulling the opening tool back with your fist to begin prying the back off.

Step 3



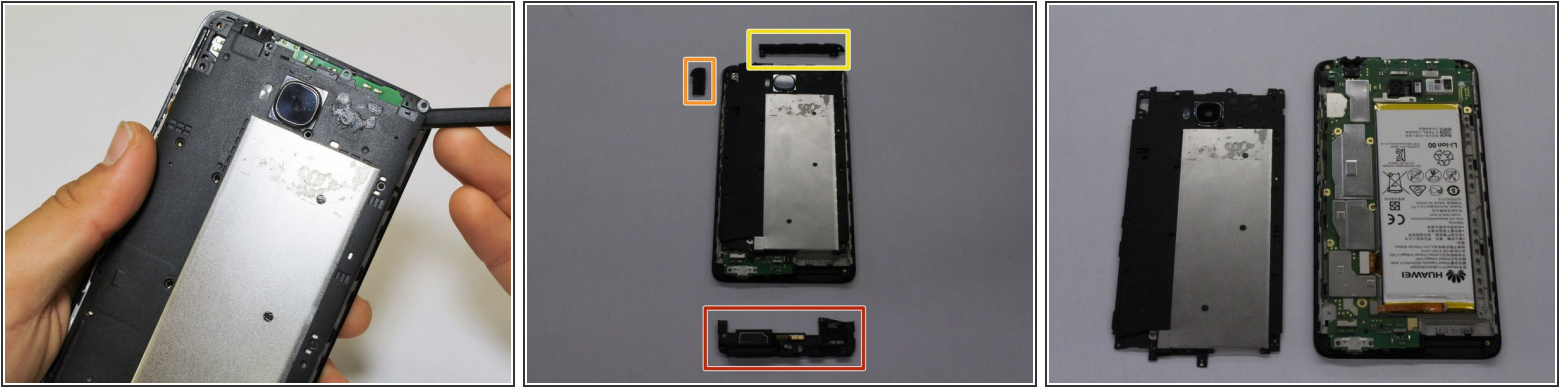
- Slide the flat end of the spudger along the edge of the device, prying off the back cover.
- Carefully remove the back cover. This may be difficult due to glue on the inside.

Step 4



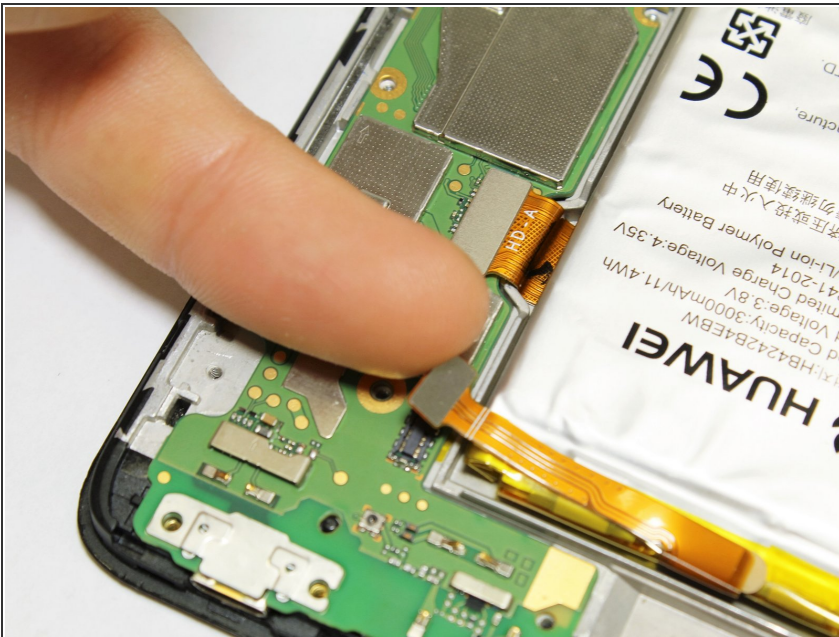
- Use the Phillips head bit to remove 20 screws.

Step 5



- Carefully pull off the speaker assembly.
- Carefully pull off the antenna assembly.
- Carefully pull off the top left tab.
- Carefully remove the back plate assembly.

Step 6



- Carefully disconnect battery ribbon wire from lower left corner of circuit board.

Step 7



- Use the spudger to pry lithium battery away from battery compartment.
- Insert new battery and connect.

To reassemble your device, follow these instructions in reverse order.