



Huawei Ascend Y300 Rear Facing Camera Replacement

This guide will show you how to replace the rear facing camera in (#) easy steps that anyone can perform.

Written By: Julie Vasquez





TOOLS:

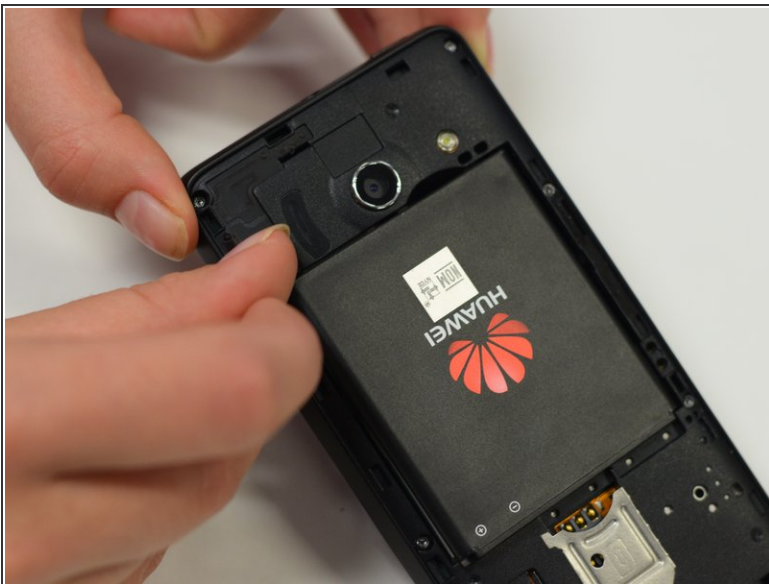
- [64 Bit Driver Kit](#) (1)
 - [iFixit Opening Tools](#) (1)
-

Step 1 — Rear Facing Camera



- Place the phone screen down on a flat surface. Underneath the camera there will be a indentation, place your thumb or pointer finger on the indentation and pull gently up towards you. The back of the phone should pop off easily.

Step 2



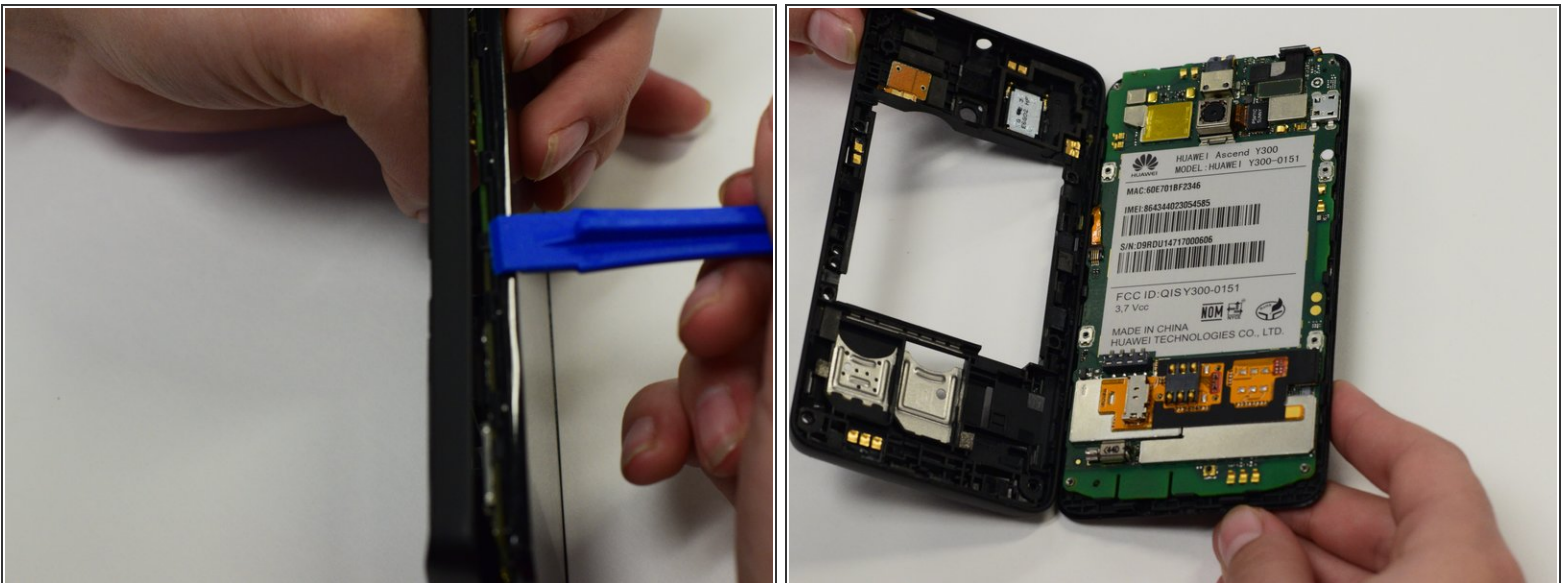
- Underneath the back of the phone you will find the battery. The battery is located in the middle of the phone's inner backing. By the battery you will find a similar indentation; place your thumb in the indentation and lift the battery towards you. The battery will come right out.

Step 3



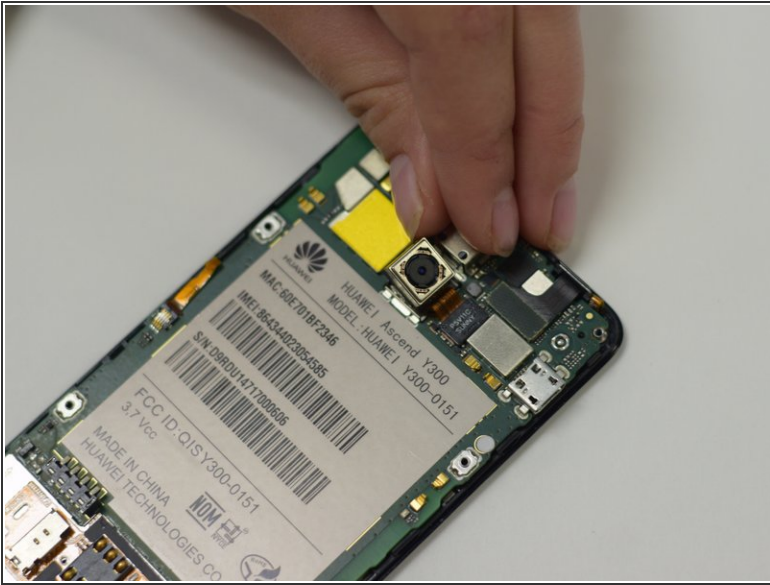
- Along the edges of the phone you will find 8 screws, to remove these screws use a screwdriver(T5 if you are using the screwdriver found in the ifixit 54 bit driver kit)
- Take the screws out by twisting left and set them in a spot where you will not lose them.

Step 4



- Use the blue plastic opening tool by sliding it along the edges of the phone to pull back the frame.

Step 5



- After removing the phone's frame, you will see the camera placed in a metallic cube, to remove the cube lift the edge gently and pull to the left.

⚠ You will notice the cube is attached to a copper ribbon, do not separate the cube from the ribbon!! it is attached.

Step 6



- CONGRATULATIONS!!! you have successfully completed this guide, please share this guide with your friends
- Yay! Party time don't forget the bean dip

To reassemble your device, follow these instructions in reverse order.