



Huawei Honor 10 Battery Replacement

This guide shows you how to remove and replace a worn-out or dead battery in your Huawei Honor 10.

Written By: Dominik Schnabelrauch



INTRODUCTION

Use this guide to replace a worn-out or dead battery in your Honor 10.

If your battery is swollen, [take appropriate precautions](#). For your safety, **discharge your battery below 25%** before disassembling your phone. This reduces the risk of a dangerous thermal event if the battery is accidentally damaged during the repair.

Although it's possible to remove the battery without removing the loudspeaker unit and the interconnect flex cable, we recommend doing so to make the removal procedure easier and to prevent damage to the interconnect flex cable.

You'll need **replacement adhesive** to reattach components when reassembling the device.



TOOLS:

- [iOpener](#) (1)
- [iFixit Opening Picks set of 6](#) (1)
- [Suction Handle](#) (1)
- [Tweezers](#) (1)
- [Spudger](#) (1)
- [Phillips #00 Screwdriver](#) (1)



PARTS:

- [Huawei P20/Honor 10 Replacement Battery](#) (1)

Step 1 — Rear Glass



- Before you begin, switch off your phone.
- Apply a [heated iOpener](#) to a long edge of the phone to loosen the adhesive beneath the rear glass. Apply the iOpener for at least two minutes.

Step 2



- ⓘ If the phone's rear glass is cracked, the suction cup may not stick. Try [lifting it with strong tape](#), or superglue the suction cup in place and allow it to cure so you can proceed.
- Press a suction cup onto the back cover.
 - Lift the back cover's right edge with your suction cup, opening a slight gap between the back cover and the frame.
 - Insert the tip of an opening pick in the gap you created and slide it to the bottom right corner.

Step 3



ⓘ [Apply more heat](#) if the adhesive becomes hard to cut. During the removal process, the back cover is under tension all the time and is likely to break if the adhesive isn't softened enough.

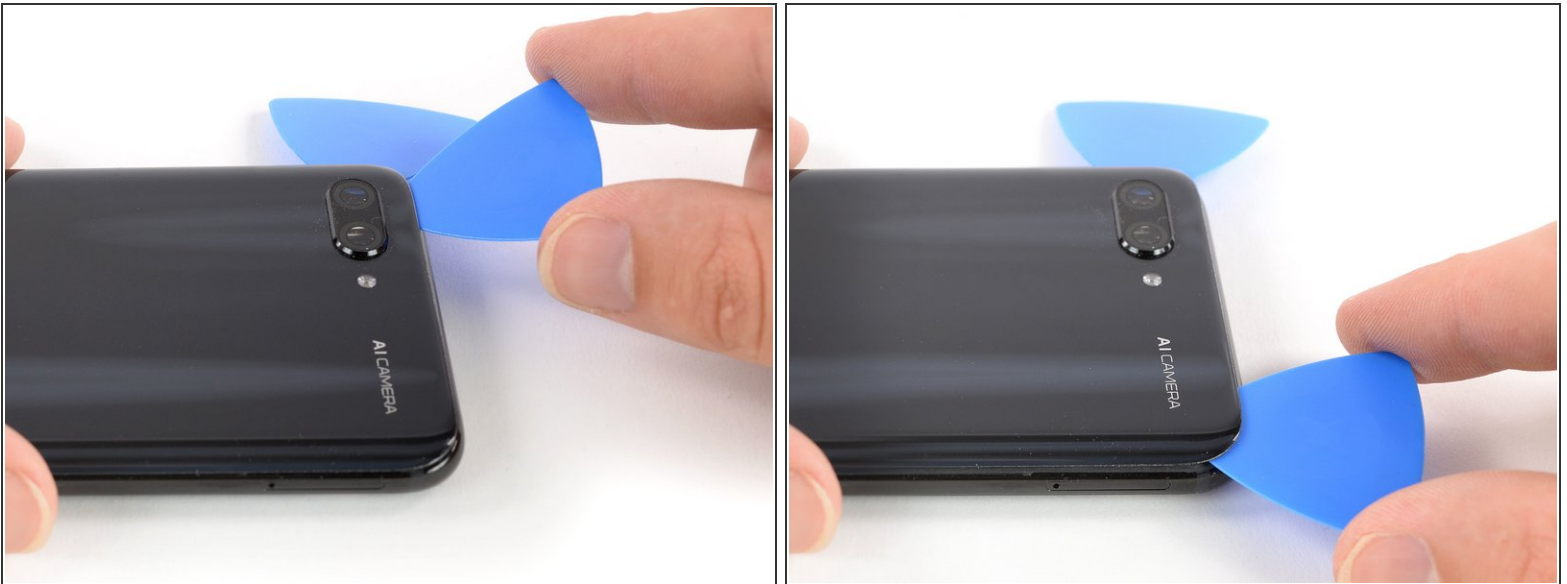
- Insert a second opening pick at the bottom right corner of the rear glass.
- Slide the opening pick along the bottom edge of the rear glass to cut the adhesive and leave it in the bottom left corner.

Step 4



- Insert a third opening pick at the bottom left corner of the rear glass.
- Slide the opening pick along the left edge of the rear glass to cut the adhesive.
- Leave the opening pick at the top left corner of the rear glass.

Step 5



- Insert a fourth opening pick at the top left corner of the rear glass.
- Slide the opening along the top edge of the rear glass and cut the remaining adhesive with it.

Step 6



- Carefully lift the rear glass of the Huawei Honor 10 and remove it.

Step 7 — Battery disconnect



- Use a pair of tweezers to carefully peel the black foil off the loudspeaker and daughterboard cover.
- Remove the foil completely.

Step 8



- Remove the three Phillips #00 screws (2.9 mm length) that secure the metal bracket on top of the battery, interconnect, and display flex cable.

Step 9



- Use a pair of tweezers to remove the metal shield that covers the connectors of the interconnect cable, the battery and the display flex cable.

Step 10



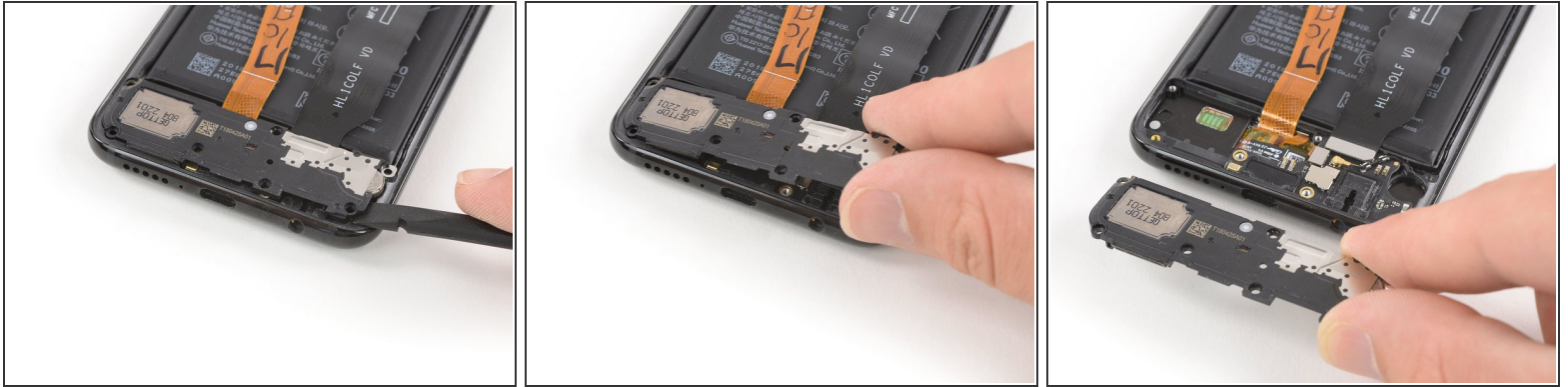
- Use a spudger to pry up and disconnect the battery flex cable.

Step 11 — Loudspeaker Unit



- Remove the seven Phillips screws securing the loudspeaker unit:
 - Three silver 2.9 mm long screws
 - Four black 3.4 mm long screws

Step 12



i There's a little bit of adhesive under the loudspeaker. It's possible to remove the loudspeaker without heating the adhesive but if you're having a hard time removing it, you can [use an iOpener](#) to soften the adhesive.

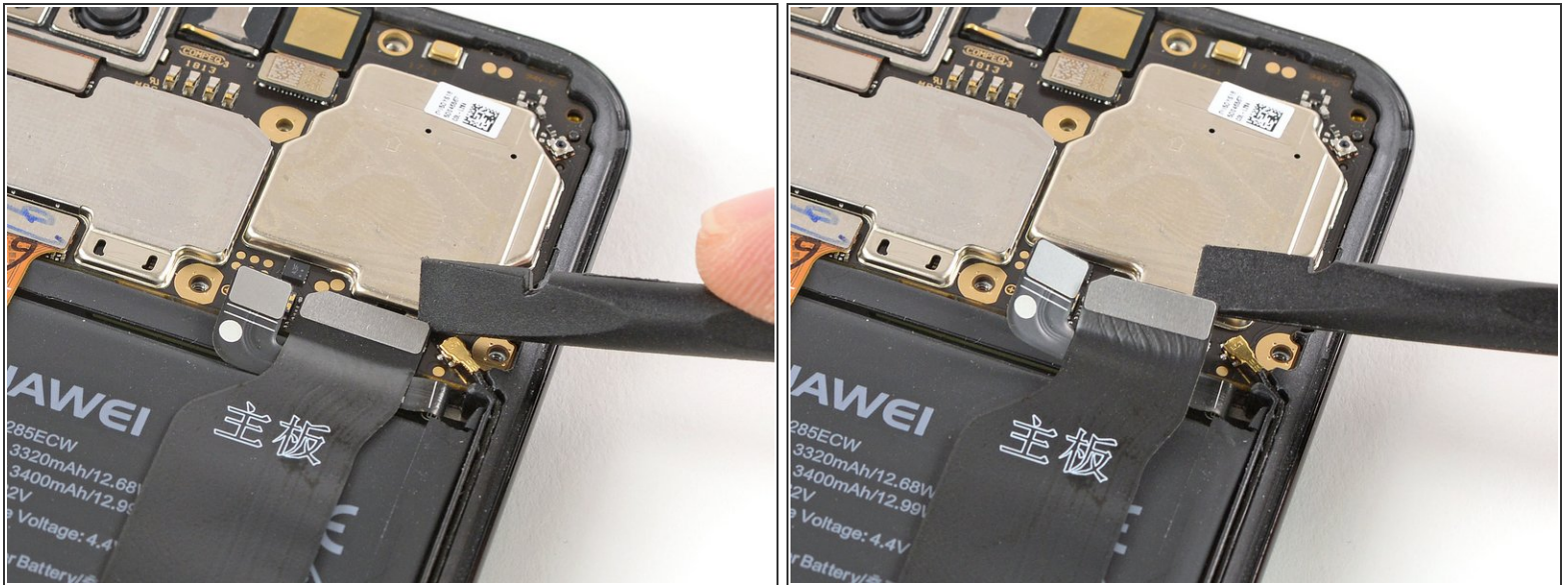
- Slide the flat end of a spudger under the right side of the loudspeaker unit.
- Pry up the loudspeaker unit until you can get a good grip.
- Remove the loudspeaker unit.

Step 13 — Battery



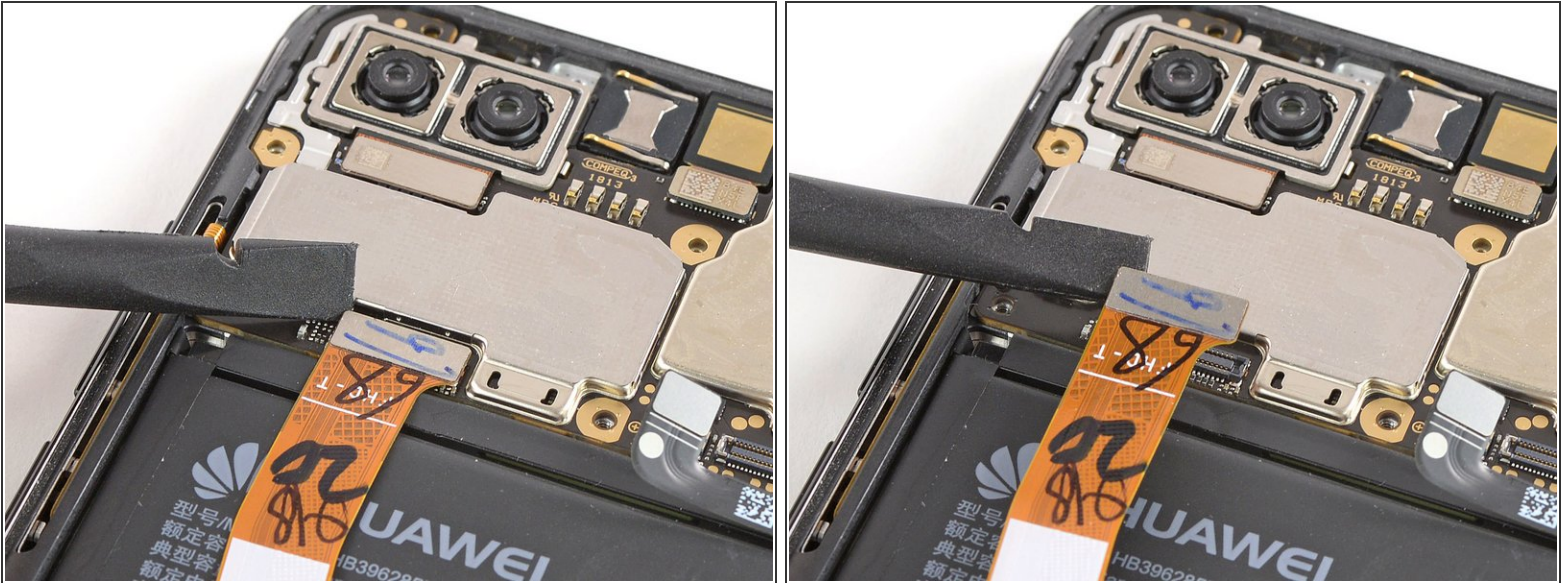
- Use a spudger to pry off and disconnect the bottom end of the interconnect flex cable.

Step 14



- Use a spudger to pry up and disconnect the top end of the interconnect flex cable.
- Remove the interconnect flex cable.

Step 15



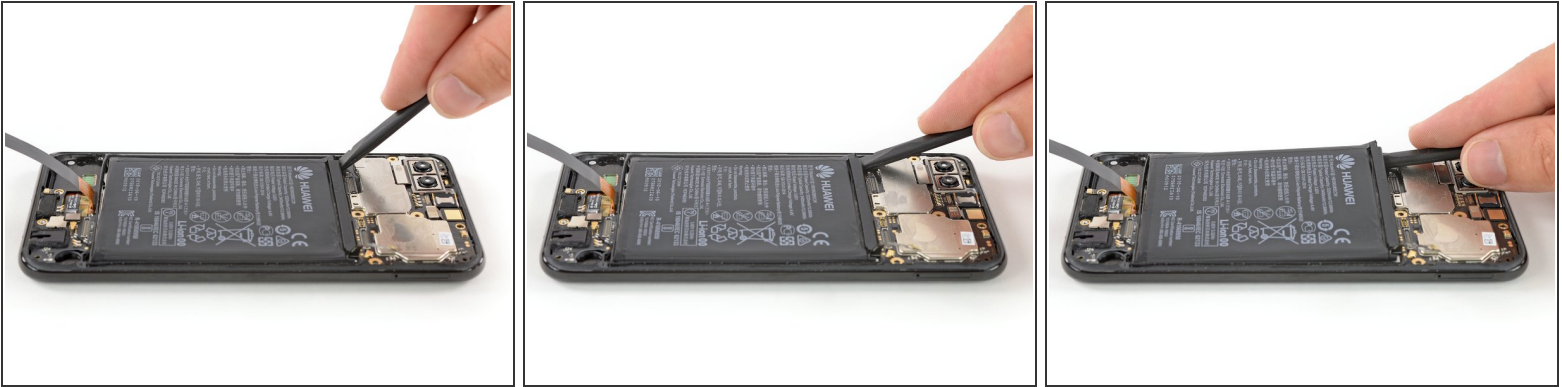
- Use a spudger to pry off and disconnect the display flex cable.
- Fold the display flex cable backwards and out of the way to make the battery removal process easier.



Step 16



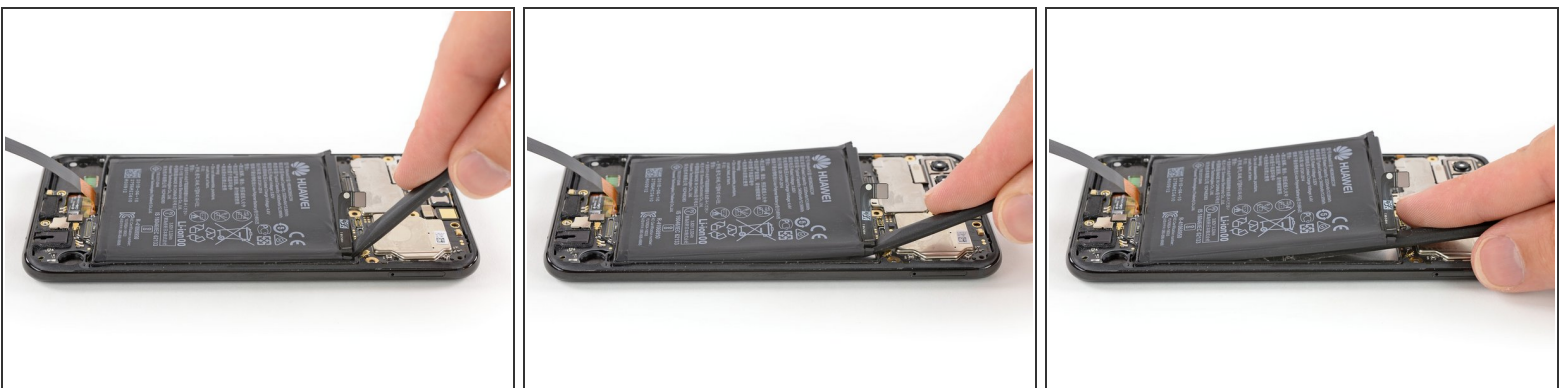
- [Apply a heated iOpener](#) to the screen for two minutes to loosen the adhesive beneath the battery.

Step 17



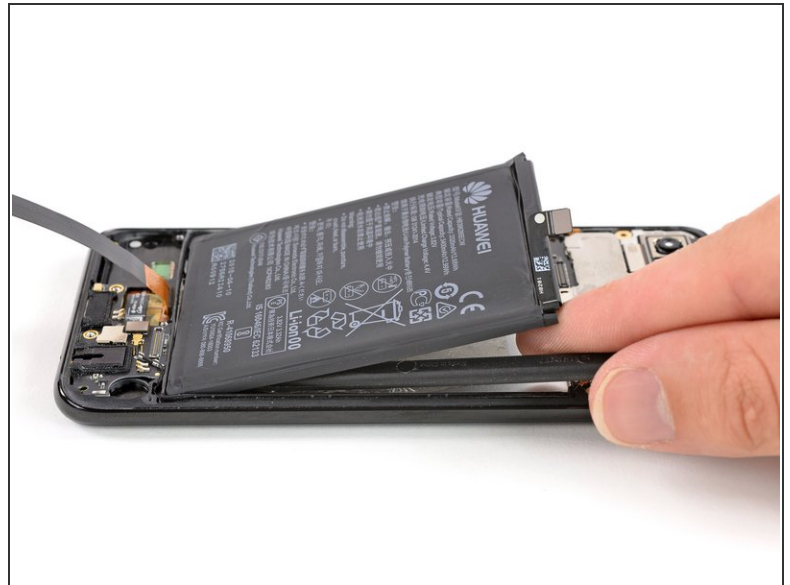
-  If you have trouble prying up the battery, the adhesive may not be loose enough. You can apply some isopropyl alcohol under each corner of the battery and allow it to penetrate for several minutes to help weaken the adhesive.
-  Try your best not to deform or puncture the battery during the following removal process. Soft-shell lithium-ion batteries can leak dangerous chemicals, catch fire, or even explode if damaged. Do not use excessive force or pry at the battery with metal tools.
- Insert the flat end of a spudger at the top left corner of the battery where the display flex cable connector is located and start to pry it up.
 - Work your way down the left side of the battery and loosen the adhesive with the spudger.

Step 18



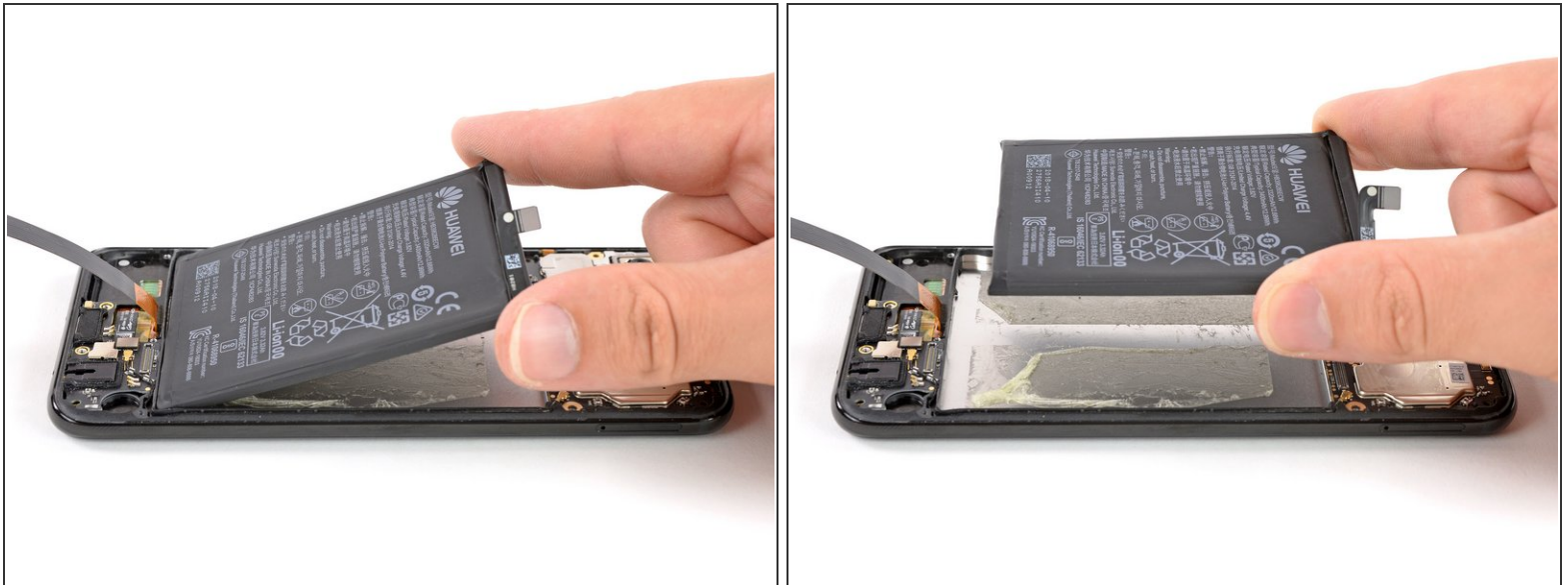
- Insert the flat end of a spudger at the top right corner of the battery to pry it up.
- Work your way down the right side of the battery and loosen the adhesive.

Step 19



- Cut the remaining adhesive beneath the center of the battery using the spudger.
- Pry up the battery until you can get a good grip.

Step 20



- Remove the battery.

⚠ Do not reuse the battery after it has been removed, as doing so is a potential safety hazard. Replace it with a new battery.

- ✦ Before installing a new battery remove any remaining adhesive from the phone, and clean the glued areas with isopropyl alcohol and a lint-free cloth.

If possible, turn on your phone and **test your repair** before installing new adhesive and resealing the phone.

Secure the new battery with pre-cut adhesive or double-sided adhesive tape. In order to position it correctly, apply the new adhesive into the phone at the places where the old adhesive was located, not directly onto the battery. Press the new battery firmly into place.

For optimal performance, [calibrate your newly installed battery](#): Charge it to 100%, and keep charging it for at least two more hours. Then, use it until it shuts off due to low battery. Finally, charge it uninterrupted to 100%.

To reassemble your device, follow these instructions in reverse order.

Take your e-waste to an [R2 or e-Stewards certified recycler](#).

Repair didn't go as planned? Check out our [Answers community](#) for troubleshooting help.

