



Written By: Arthur Shi



## INTRODUCTION

Follow this guide to remove and replace the lithium-ion battery for the Mate 10. You also have to remove the battery in order to replace the screen.

If your battery is swollen, [take appropriate precautions](#). **For your safety, discharge your battery below 25% before disassembling your phone.** This reduces the risk of a dangerous thermal event if the battery is accidentally damaged during the repair.

The back cover held in place with a very strong perimeter adhesive. **During removal, the adhesive may rip out parts of the coating from the glass back cover, leaving behind patches of clear glass.**



### TOOLS:

- [Suction Handle](#) (1)
- [iFixit Opening Picks set of 6](#) (1)
- [Tweezers](#) (1)
- [iFixit Opening Tools](#) (1)
- [Phillips #00 Screwdriver](#) (1)
- [Spudger](#) (1)
- [iOpener](#) (1)
- [Plastic Cards](#) (1)



### PARTS:

- [Huawei Mate 10 Back Cover Adhesive](#) (1)

## Step 1 — Remove the back cover



- [Heat an iOpener](#) and apply it to the bottom edge of the phone for two minutes. Re-heat the iOpener as needed.
- ⓘ A hair dryer, heat gun, or hot plate may also be used, but be careful not to overheat the phone.
- While you wait, note the location of the adhesive holding the back cover in place.

## Step 2



- Place a suction cup near the bottom edge of the back cover, on the right side (opposite the speaker grille) of the USB-C charging port, above the microphone hole.
  - ⓘ If your back cover is badly cracked, covering it with a layer of clear packing tape may allow the suction cup to adhere. If all else fails, you can superglue the suction cup to the back cover.
- Pull on the suction cup with strong, steady force to create a gap.
  - ⓘ Due to the adhesive's strength, this is very difficult and may take multiple attempts. If you can't create a gap, re-apply heat and try again.
- Insert the point of an opening pick into the gap.

## Step 3



- Slide the pick along the bottom edge and around the bottom-left corner, slicing through the adhesive.
- If the adhesive feels tacky and difficult to slice, re-apply heat to the edge and try again.
- Leave an opening pick in the seam to prevent the edge from re-sealing.

## Step 4



- Apply a heated iOpener to the left edge of the phone.
- Use an opening pick to slice through the adhesive on the left edge of the phone.
- i** The adhesive is very thick in some areas. Sustained exposure to heat will help weaken the stubborn adhesive. Take your time, and apply heat liberally.

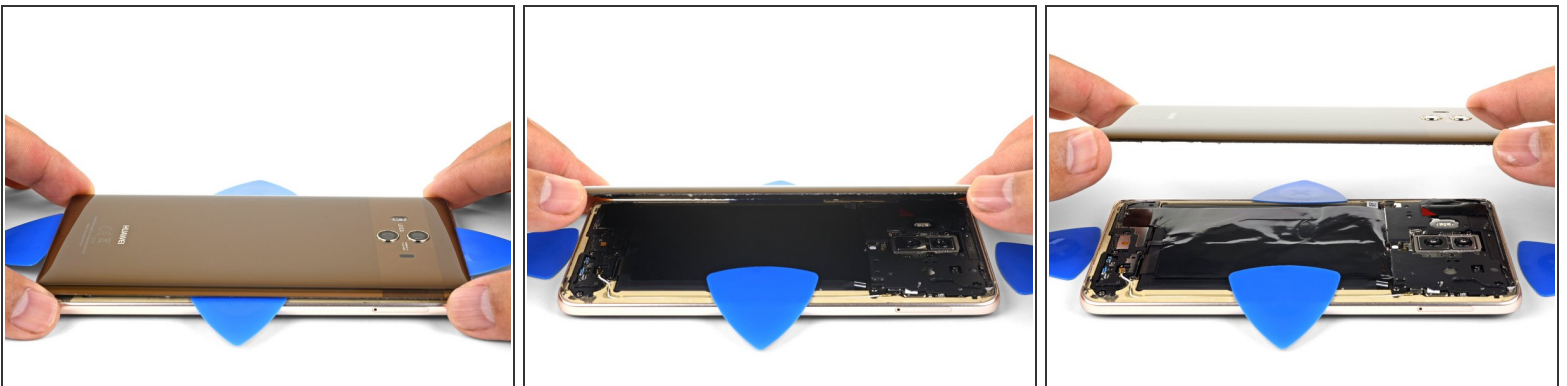


## Step 5



- Continue heating and slicing through the remaining edges, leaving opening picks in the seams to prevent the adhesive from re-sealing.

## Step 6



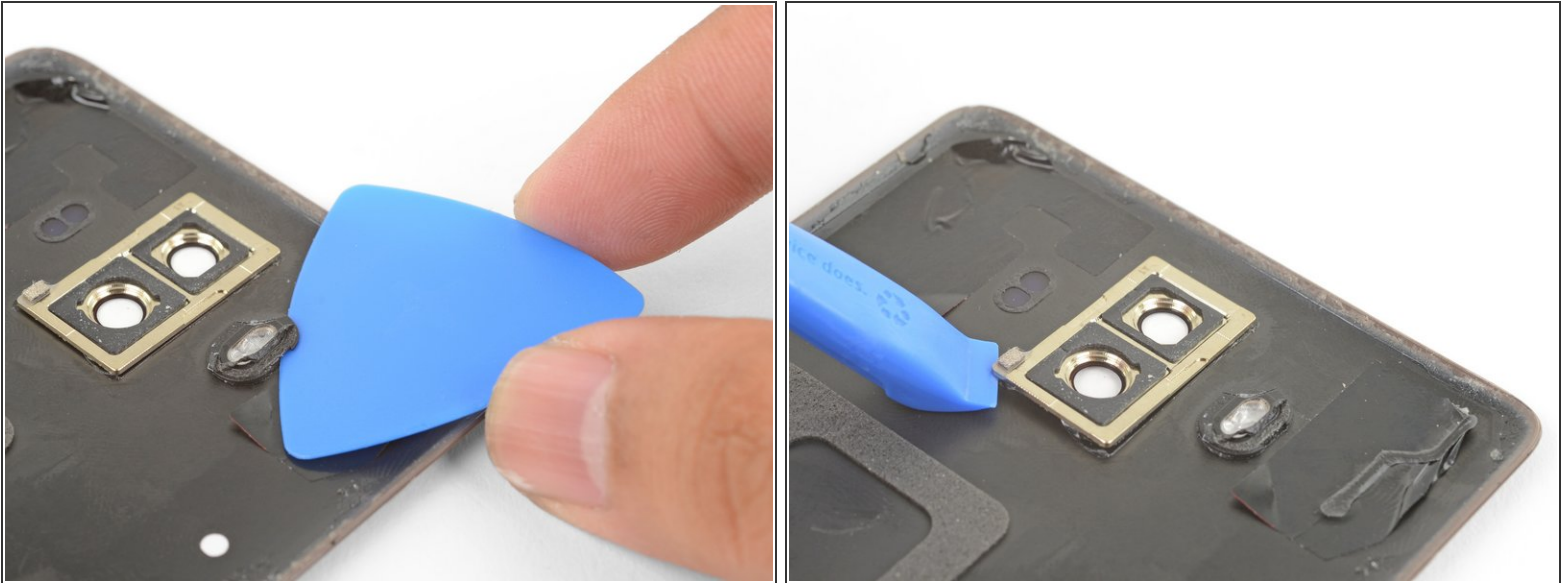
- After you cut through the adhesive around the entire perimeter of the back cover, begin to lift it away from the phone.
  - Use an opening pick to slice any remaining adhesive.
  - Remove the back cover.
- ☒ During reassembly, this is a good point to power on your phone and test all functions before sealing it up. Be sure to power your phone back down completely before you continue working.

## Step 7 — Prep the phone for a new back cover



- ✦ Before you install a replacement back cover, be sure to remove all traces of perimeter adhesive from the phone frame.
- ✦ If you are re-using the back cover, carefully remove all traces of adhesive from the back cover.
- ⓘ The glass back cover is fragile and prone to cracking. Do not apply uneven pressure to the back cover as you clean.
  - You may pull up chunks of the cover's color coating as you remove the adhesive. To reduce the chances of this occurring, apply heat or high concentration isopropyl alcohol to the adhesive to weaken it.

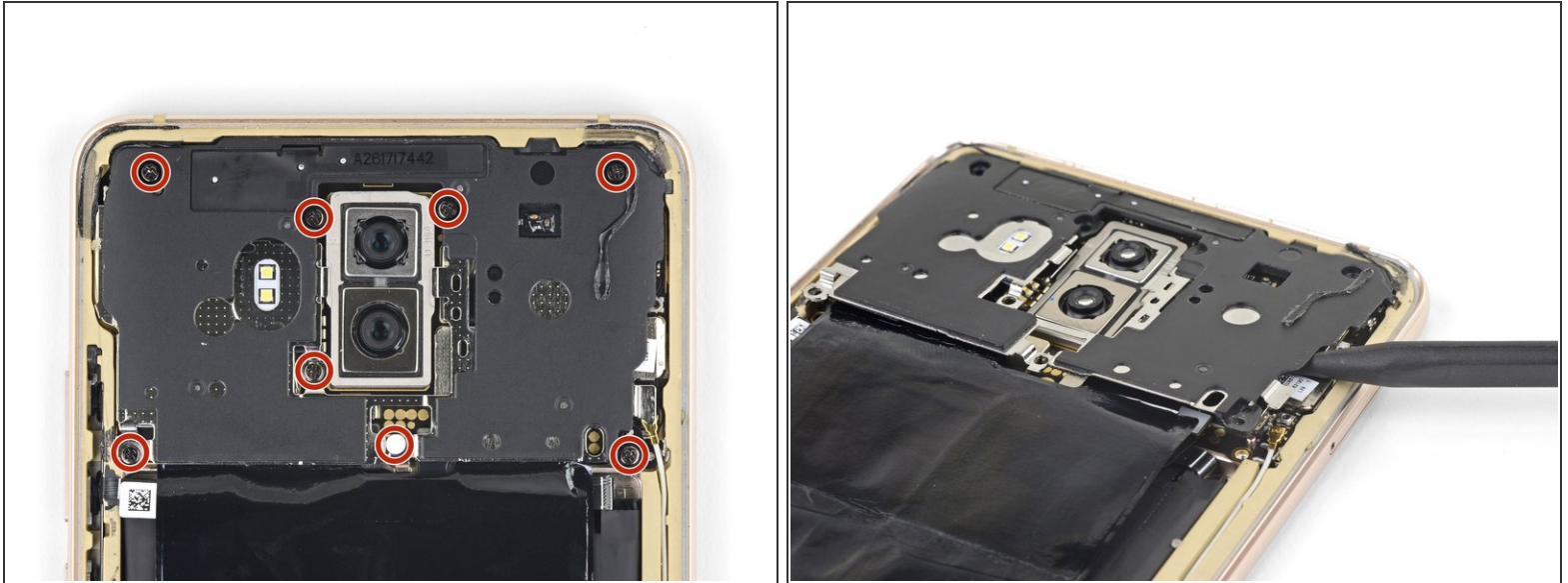
## Step 8



- ✦ If your replacement back cover did not come with a flash diffuser or camera bezel, you will need to transfer them from your old cover to the new one.
- Apply a heated iOpener directly over the bezels for a minute.
  - Use an opening pick to slice around the flash diffuser to loosen the adhesive.
    - ⓘ The flash diffuser is made of plastic and cracks easily. Be sure to slice around the flash completely before you pry it off.
  - Use an opening tool to pry up and remove the camera bezel.
  - Transfer the parts to your replacement cover.

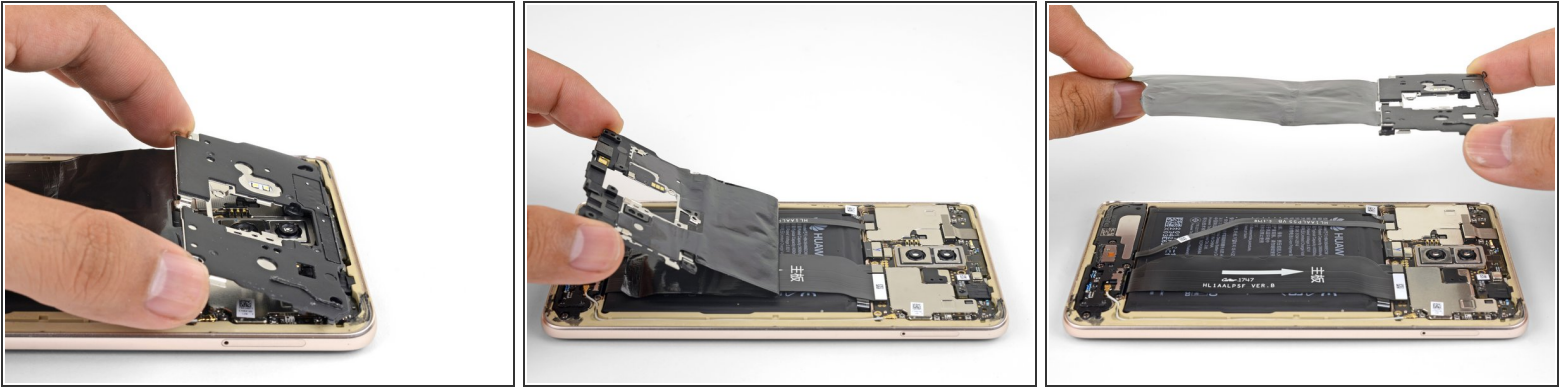


## Step 9 — Remove the plastic bracket



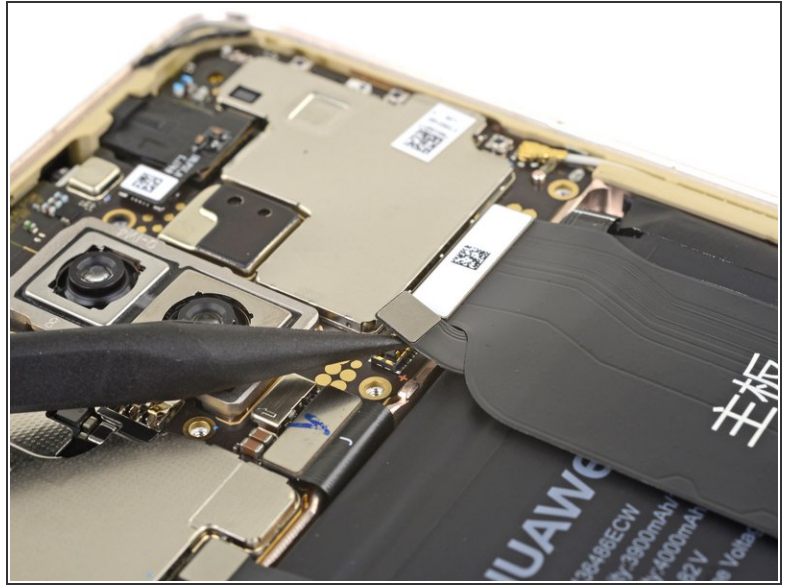
- i** The next two steps show how to remove the heat dissipation layer, along with its plastic bracket.
- Remove the eight 3.4 mm long Phillips screws securing the plastic bracket.
  - i** One screw lies beneath a white sticker. Remove the sticker.
  - Insert the point of a spudger underneath the right edge of the plastic bracket and pry up slightly to loosen the shield.

## Step 10



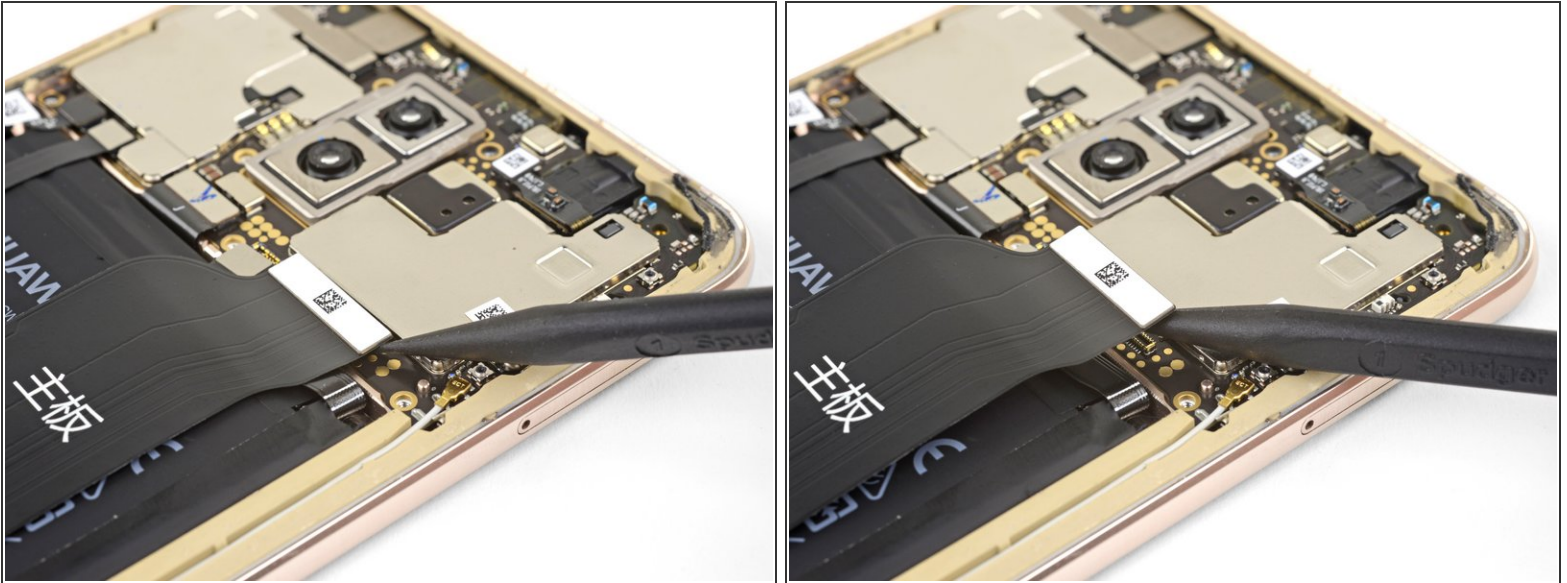
- Grasp the the lower edge of the plastic bracket with your fingers and lift the edge up slightly.
- Pull the plastic bracket away from the top edge of the phone.
- Slowly peel the black heat dissipation layer away from the phone. It is held in place with small patches of adhesive.
- Remove the plastic bracket along with the heat dissipation layer.

## Step 11 — Disconnect the battery



- Use the point of a spudger to pry up and disconnect the battery connector from its motherboard socket.
- ⓘ When you disconnect connectors like these, be careful not to dislodge the small surface-mounted components surrounding the socket.

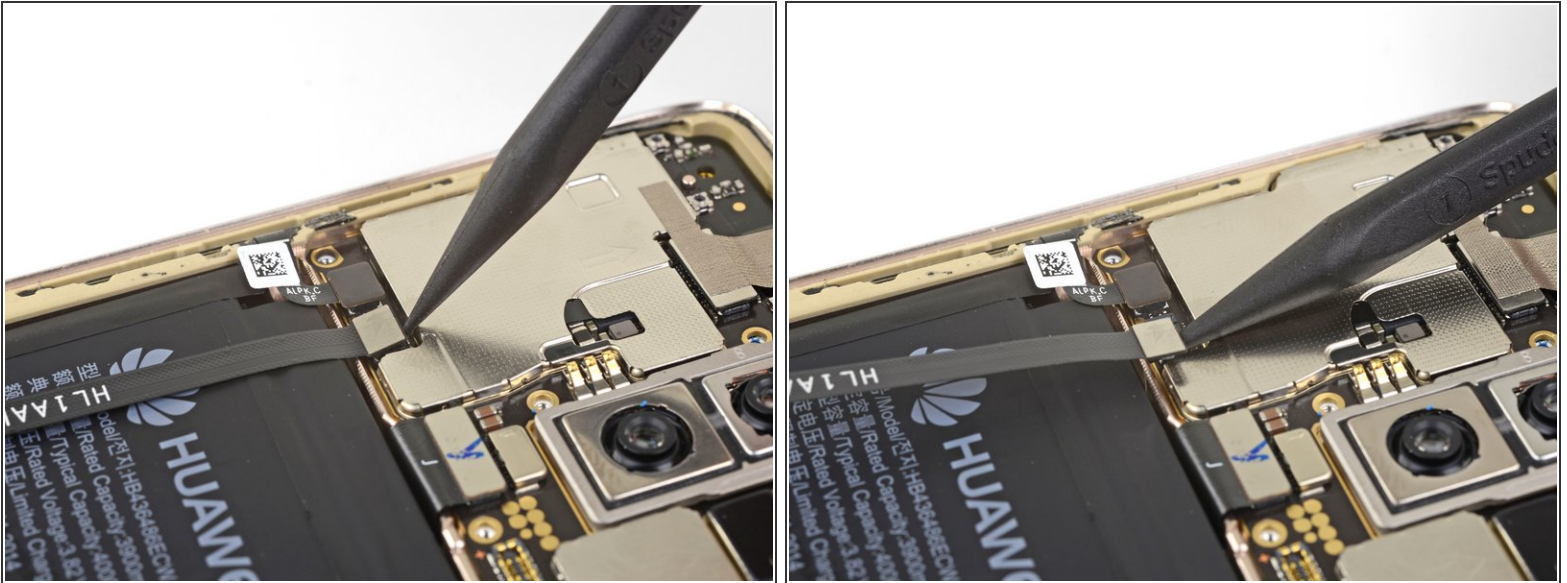
## Step 12 — Disconnect the interconnect cable



- Use the point of a spudger to pry up and disconnect the wide interconnect flex cable from its motherboard socket.
- ⓘ To re-attach [press connectors](#) like this one, carefully align and press down on one side until it clicks into place, then repeat on the other side. Do not press down on the middle. If the connector is misaligned, the pins can bend, causing permanent damage.

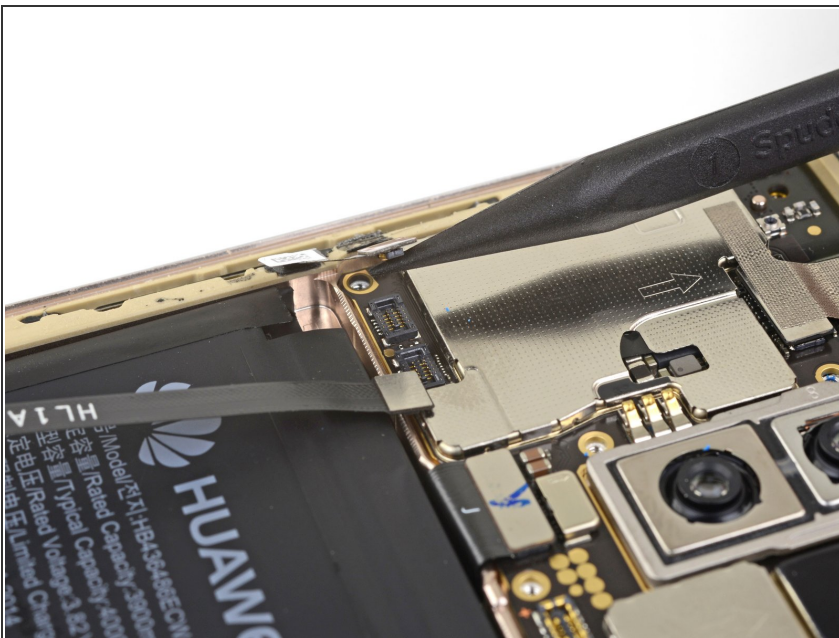


## Step 13



- Use the point of a spudger to pry up and disconnect the fingerprint extension cable from its motherboard socket.

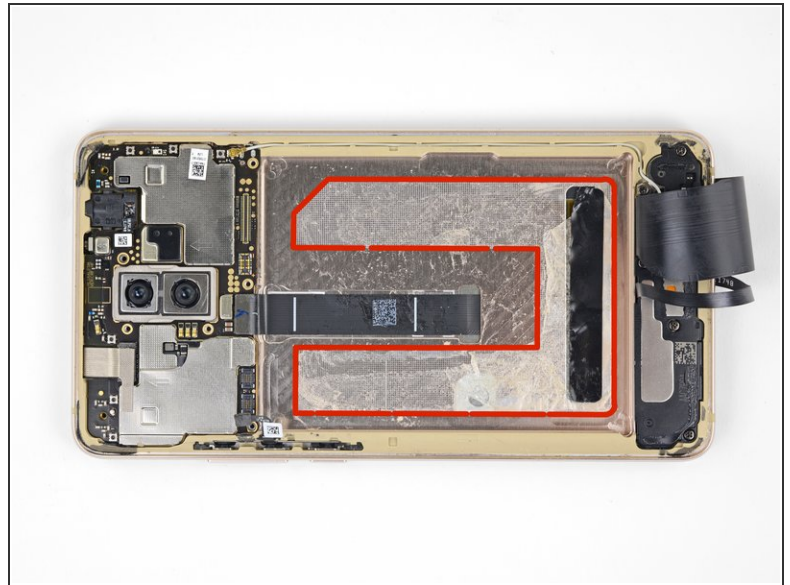
## Step 14 — Disconnect the button connector



- Use the point of a spudger to pry up and disconnect the button connector from its motherboard socket.



## Step 15 — Remove the glued-in battery



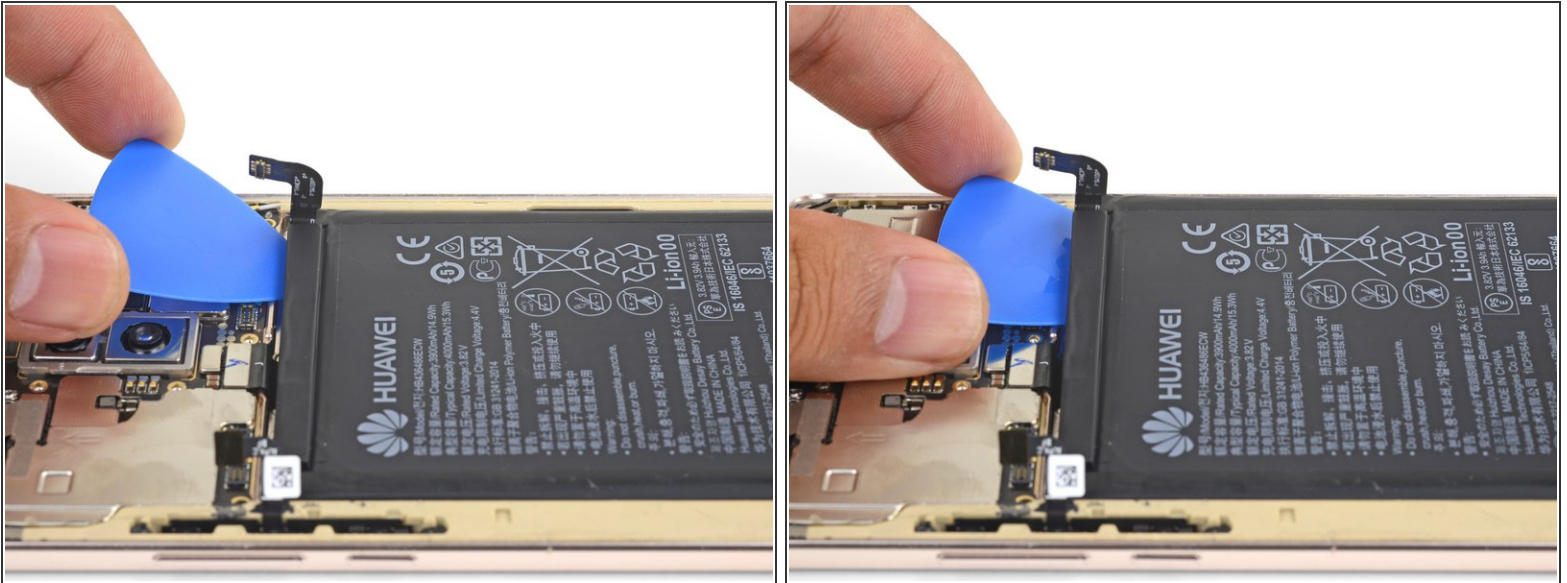
- ❗ The battery is held in place by very strong adhesive.
- Apply a heated iOpener to the left side of the phone screen for a minute.
- While you wait, note where the U-shaped adhesive resides on the phone frame.

## Step 16



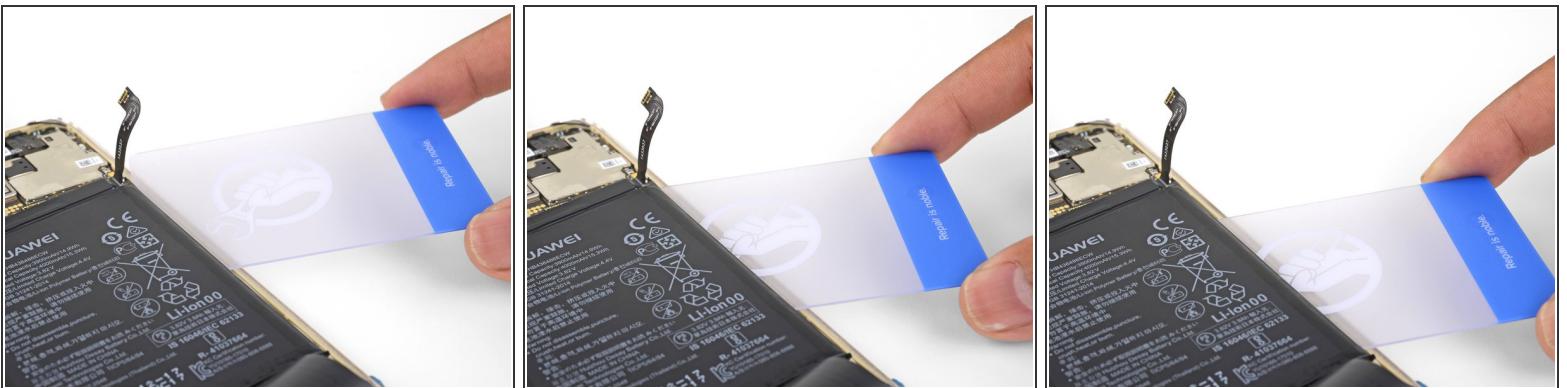
- Insert an opening pick in the notch on the phone's right edge.
- Slowly but firmly push the pick underneath the battery, to loosen it from the frame.
- ❗ If you are having trouble getting the pick under the battery, you can [apply some high concentration isopropyl alcohol to the seam](#). Give the alcohol a minute to penetrate and soften the adhesive.

## Step 17



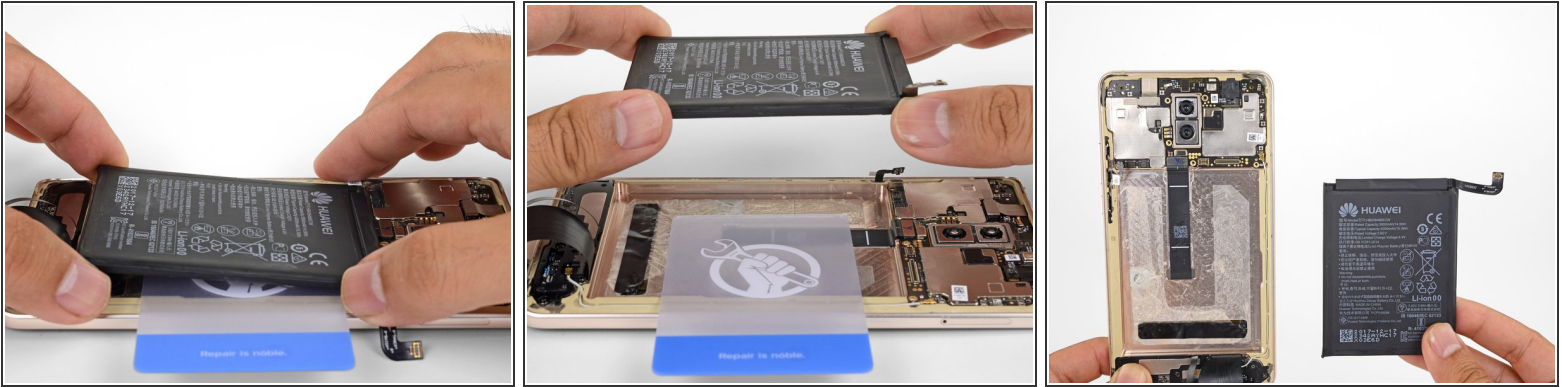
- Slowly insert an opening pick in the top edge of the battery, towards the right edge.
- Twist slightly to help loosen the battery.

## Step 18



- Insert a plastic card under the battery's right edge.
- Push the card inwards to loosen the battery from the frame.
  - If you're having a hard time loosening the battery, you can apply more isopropyl alcohol, or try to soften the adhesive with more heat.
- ❗ Try not to deform the battery as you pry.

## Step 19



- Once the battery is sufficiently loosened from the frame, slowly lift it out.
  - Remove the battery.
- ✦ To install a replacement battery:
- Apply new adhesive to the phone frame.
  - Gently lay the battery pack in the phone.
  - *Temporarily* reconnect the battery to the motherboard to ensure that the battery is properly aligned.
  - Once the battery is aligned, press it firmly in place with your fingers. Disconnect the battery from the motherboard, and resume re-assembly.
- i** For optimal performance, calibrate your newly installed battery: Charge it to 100% and keep charging it for at least 2 more hours. Then use your device until it shuts off due to low battery. Finally, charge it uninterrupted to 100%.

To reassemble your device, follow these instructions in reverse order.

Take your e-waste to an [R2 or e-Stewards certified recycler](#).

Repair didn't go as planned? Try some [basic troubleshooting](#), or ask our [Mate 10 Answers community](#) for help.