



# Huawei Mate 10 Pro Back Cover Replacement

This guide shows you how to replace the back cover of your Huawei Mate 10 Pro.

Written By: Dominik Schnabelrauch



## INTRODUCTION

Use this guide to replace the back cover of your Huawei Mate 10 Pro.

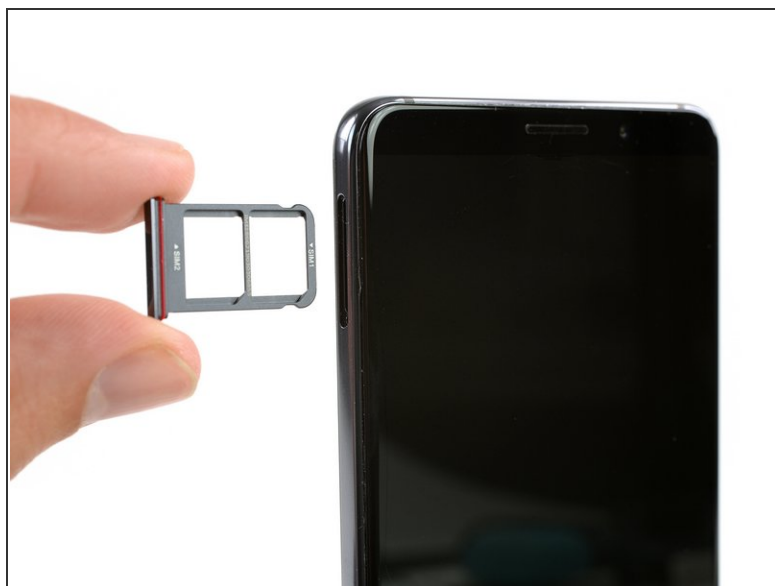
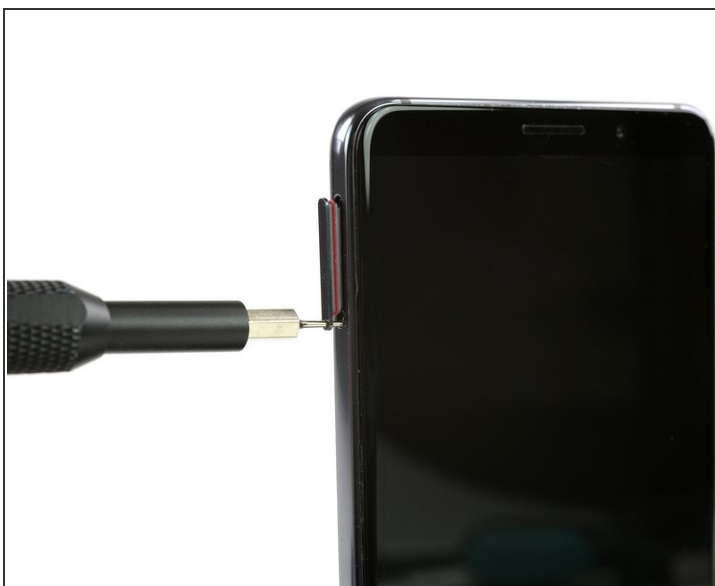
**If your battery is swollen, do not heat your phone**. Swollen batteries can be very dangerous, so wear eye protection and exercise due caution, or take it to a professional if you're not sure how to proceed.



### TOOLS:

- [Halberd Spudger](#) (1)
  - [Spudger](#) (1)
  - [iFixit Opening Picks set of 6](#) (1)
  - [Suction Handle](#) (1)
  - [Phillips #00 Screwdriver](#) (1)
  - [Tweezers](#) (1)
  - [SIM Card Eject Tool](#) (1)
  - [iOpener](#) (1)
-

## Step 1 — SIM Card Tray



- Insert a SIM opening tool in the hole on the left side and push it in.
- Remove the SIM card tray.

## Step 2 — Back Cover



- Switch off your phone.
- [Prepare an iOpener](#) and apply it to the back of the phone for about two minutes to loosen the adhesive beneath the back cover.


## Step 3



- Lift up the back cover with a suction cup until you can insert the flat end of a halberd spudger.
- Use the halberd spudger to cut the adhesive beneath the back cover on all sides of the phone.
- ① Use opening picks to avoid the adhesive from sticking to the back cover again while cutting the adhesive on all sides.

## Step 4



 Don't remove the back cover all the way, yet. The fingerprint sensor cable is still connected to motherboard.

- Flip the back cover over to the side.
- Remove the Phillips #00 screw which holds down the metal shield, sitting on top of the connection of the fingerprint sensor cable.

## Step 5



- Use a pair tweezers to remove the metal shield covering the connector of the fingerprint sensor.
  - Disconnect the fingerprint sensor cable with a spudger.
- ✦ When reassembling your phone apply new adhesive where it is necessary.

To reassemble your device, follow these instructions in reverse order.