



Written By: Dominik Schnabelrauch



## INTRODUCTION

Christmas is ahead and it has got a little bit wintry in flagship harbor these days—but we've been waiting patiently at the end of the dock for the Mate 10 Pro to sail in from Chinese smartphone maker Huawei. And we don't stand in the cold for nothing—after a warm welcome, this new smartphone is going straight to the teardown table. Join us as we examine Huawei's latest offering, piece by piece.

Can't get enough flagship teardowns? Get friendly with us on [Facebook](#), tweet along via [Twitter](#), and hit us up on [Instagram](#) to stay up-to-date on all things repair!

---

### TOOLS:

- [iSclack](#) (1)
  - [Halberd Spudger](#) (1)
  - [iFixit Opening Picks set of 6](#) (1)
  - [Spudger](#) (1)
  - [iFixit Opening Tools](#) (1)
  - [Tweezers](#) (1)
  - [iOpener](#) (1)
  - [Phillips #000 Screwdriver](#) (1)
  - [Plastic Cards](#) (1)
  - [Metal Spudger](#) (1)
-

## Step 1 — Huawei Mate 10 Pro Teardown



- Let's start this teardown with a brittle hard fact — Huawei added a glass back to the Mate Pro 10 to align more closely with its competition.
- Does that mean we'll find wireless charging underneath the IP67 certified case? Not according to the specs:
  - Octa-core Kirin 970 and Mali-G72 MP12 GPU
  - 6.0" AMOLED Display with a resolution of 1080 x 2160 (402 ppi)
  - Dual 20 MP and 12 MP, *f*/1.6 main camera unit by Leica
  - 8 MP *f*/2.0 selfie camera
  - Configured with 128 GB storage and 6 GB RAM or 64 GB storage with 4 GB RAM
  - Ships with Android 8.0 Oreo and EMUI 8.0

## Step 2



- Before we start to deconstruct the Mate 10 Pro, we line it up next to one of its predecessors, the Mate 9—[which we also tore down](#)—for a quick comparison.
  - At first glance, differences are fairly minor: there's the new Leica Dual camera with Optical Image Stabilization, and the round fingerprint sensor right beneath it.
  - More noticeable is the new ergonomic curved glass back and a signature stripe highlighting the dual lens cameras.
  - We feel a little bit sad that the camera lenses now go their [Separate Ways](#). But hey, it is a necessary sacrifice to embrace the new [Digital Frontier](#).
- i** On closer inspection, you may notice that the Mate 10 Pro is slightly smaller than the Mate 9—although the display measures 0.1" *bigger*. The new 6.0" display is nearly bezel-less.

### Step 3



- We still remember the opening of the Mate 9 and reach for our screwdriver, only to have a shocking realization—there's nothing here to unscrew!
- A moment later we make another shocking discovery – there is no headphone jack! It seems we can't listen to music whilst we pry the 10 Pro open.
- In the absence of any twistable fasteners, we drop an iOpener and start heating the back of the phablet. Given that IP67 rating, perhaps we should have expected a bit of trouble.
- ❗ If you're planning on [ice diving](#) this winter, IP67 guarantees water (and dust) resistance down to one meter for as long as 30 minutes.
- We position an [iSclack](#) and start to slice around the aluminum frame with a [Halberd Spudger](#)...

## Step 4



- Surprisingly, the heated adhesive doesn't stick too well to the back cover, and with the use of some [Opening Picks](#) we separate it from the main body. Is this the reason for the liquid damage indicators on the back cover and this beefy fingerprint sensor cable bracket?
- Like the Mate 9, the 10 Pro's fingerprint flex cable still tethers the back cover to the rest of the phablet.
- Behold, the wonderful inner workings of Huawei's new flagship! The first thing to catch our eye is a huge flex cable running from the daughterboard up to the main board, where all the exciting chips live.

## Step 5



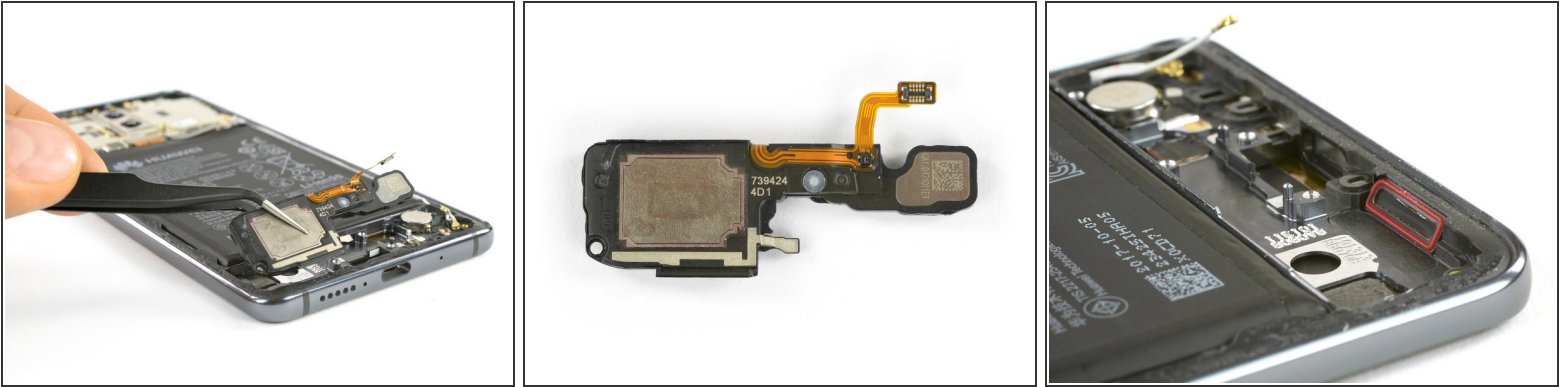
- The Mate 10 Pro's valuables are well protected, and covered with a large metal shield.
- Proceeding with our teardown, we remove one of the many liquid indicators and all the [Phillips screws](#) we can find, as well as a small metal shield covering the flex connection for the fingerprint sensor.
- ❗ The screws seem to be some kind of aluminum alloy—they don't attract much to any of our driver bits, nor to the magnetic mat.
- With everything duly unscrewed, we gleefully rub our hands in anticipation of what we'll find. Next to come out: the large shield holding the dual-LED flash, which protects all flex connections and contacts on the motherboard.

## Step 6



- Next point on our checklist—a huge flex cable we've never seen before!
  - After the removal of another metal shield and two antenna cables, we go on and lift out the flex cable.
  - To our surprise, we get not only the flex cable but the complete daughterboard as well. It's glued to the USB-C port, which is equipped with an IP67-approved rubber gasket.
- i** We're happy to see a fairly modular USB-C port here. If (or when) it finally gives out, you'll just have to replace this big flex cable along with it.

## Step 7



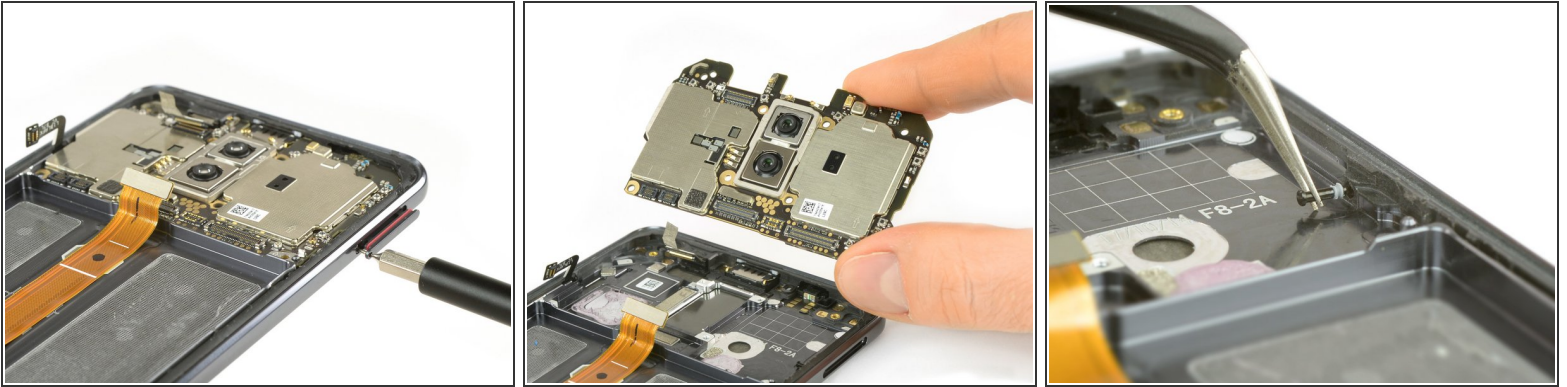
- Moving on, we remove the loudspeaker and find a bright red gasket and a very fine mesh membrane protecting it from dust and water!
- ❗ Surprisingly, the standard version of the Mate 10 comes only with a IP53 certification. We don't really know the reason for that.
- At this point we can remove the vibration motor as well, although it looks to be a pretty standard coin-style affair.

## Step 8



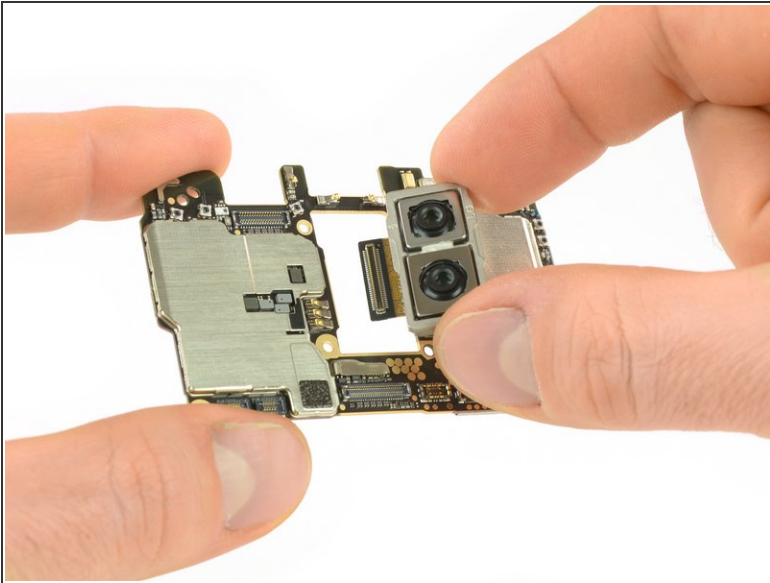
- We're excited to cleave our way down to the motherboard, but first we spot something worthy of a quick detour—the battery!
  - A big slab of adhesive spans nearly the entire bottom of the battery. With some heat and a bit of help from a [Plastic Card](#), we can extract this 4000 mAh beast.
  - With its 3.82 V and up to 15.3 Wh of power, the battery is the same as in the [Mate 9](#). It is coupled with smart battery management that learns from user behavior in order to minimize wasted power and maximize battery life. Huawei promises a full day of use with just a 20-minute charge.
- ⓘ Despite that glass back, there's no wireless charging hardware for this battery. It seems we get all the downsides of a [glass sandwich design](#) (including double the crackability), with none of the upsides.

## Step 9



- Only a few more steps separate us from that new and highly anticipated HiSilicon treasure!
- We remove the SIM card tray (and [pat Huawei on the back](#) as we see another red rubber gasket) and then easily lift out the motherboard with the dual camera system.
- Even the little pin that ejects the SIM card comes equipped with a tiny gasket.

## Step 10



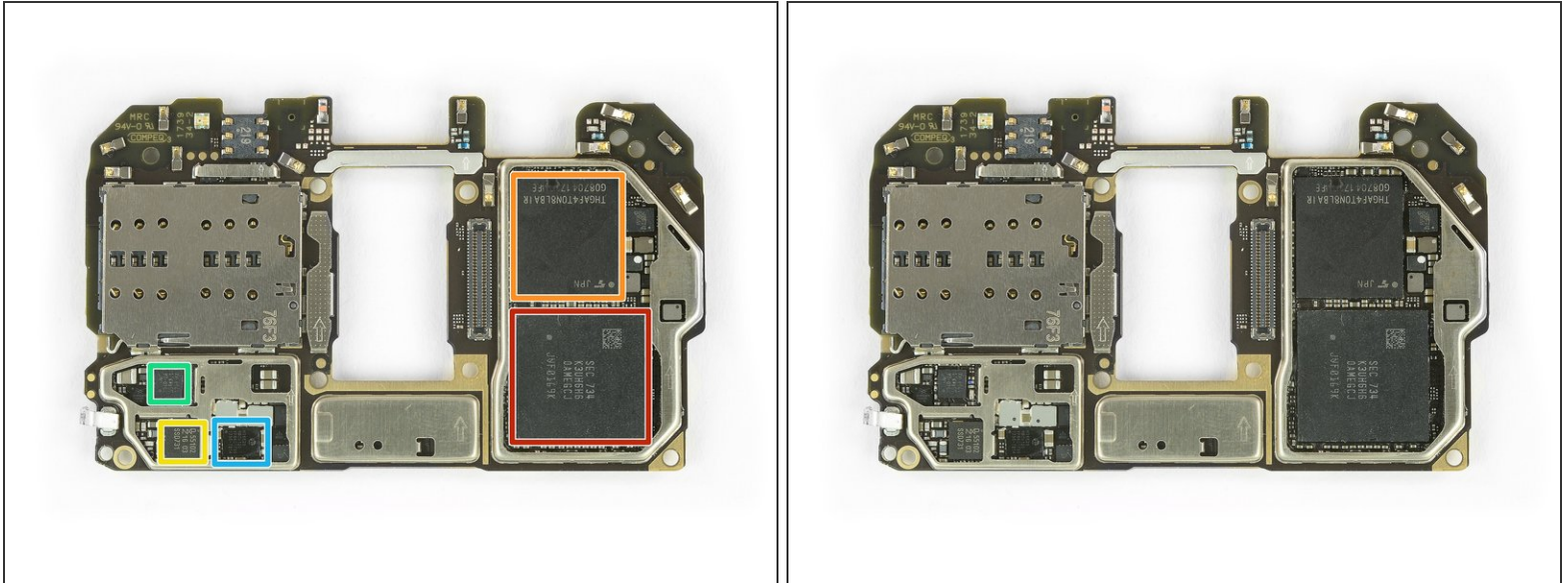
- Before we start the chip fest, we examine the Leica addition to this new Huawei flagship: one module with a 20 MP monochrome sensor, and a second 12 MP RGB module.
- ⓘ With intelligent photographic algorithms, the Huawei Mate 10 Pro is supposed to identify different types of scenes and objects and automatically adjust exposure, color, contrast, and brightness for better images.

## Step 11



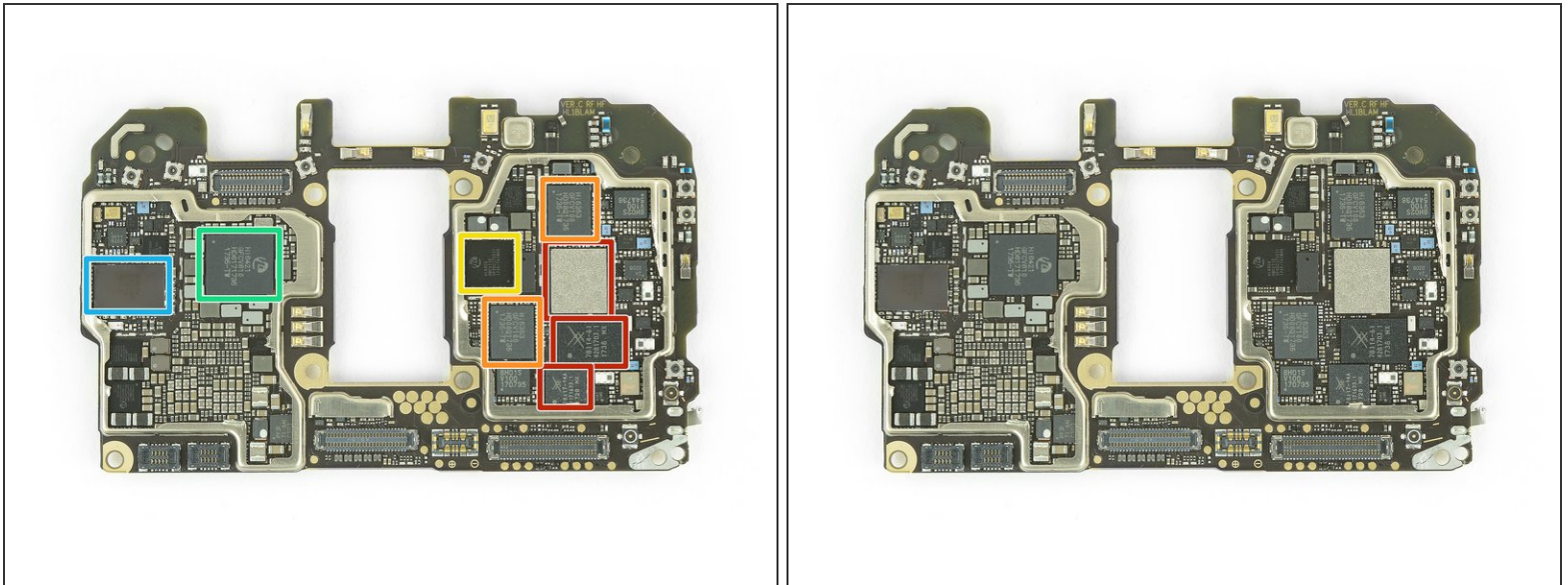
- ⓘ The Leica Dual Lens comes with an  $f/1.6$  aperture, which lets in more photons for better low-light photographs and blur-free shots of moving objects.
- Additionally, the camera system comes with optical image stabilization, which is important for many reasons, not least of which is that you can poke it and make it wiggle.

## Step 12



- Our long journey nears its finale with a close look at the chipset of the Mate 10 Pro!
  - 4 GB (optionally 6 GB) of Samsung RAM, with the new Kirin 970 SoC layered underneath
    - ⓘ The Kirin 970 SoC features two quad-core CPU (Cortex A73 and Cortex A53), the Mali-G72 GPU and a dedicated NPU (Neural Processing Unit)
  - Toshiba 128 GB NAND Flash memory
  - NXP PN548 NFC controller
  - Skyworks 7360-2A RF module
  - HiSilicon HI6523 battery charger

## Step 13



- And on the back:
  - Skyworks 78113-14, 78114-61, and 78117-14A for WCDMA / LTE bands
  - HiSilicon Hi6363 RF transceiver
  - HiSilicon Hi6403 audio codec
  - HiSilicon Hi6421 power management
  - Broadcom BCM43596XCUBG WiFi/BT module

## Step 14



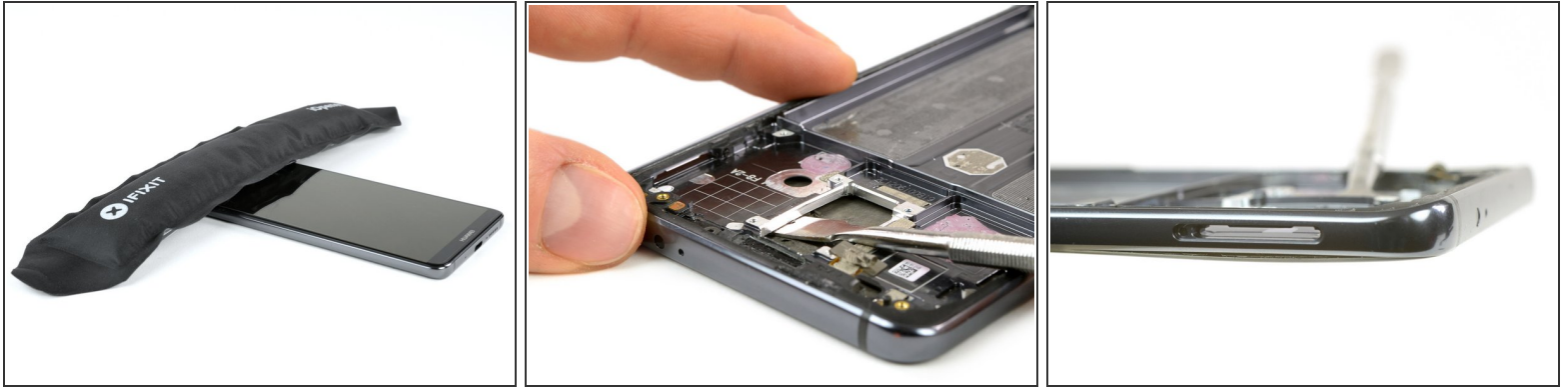
- We slowly recover from the chip party and head over to the power and volume buttons.
- Here the IP67 rating is achieved, sadly, with small breakable plastic sealing parts. Not especially repair friendly.

## Step 15



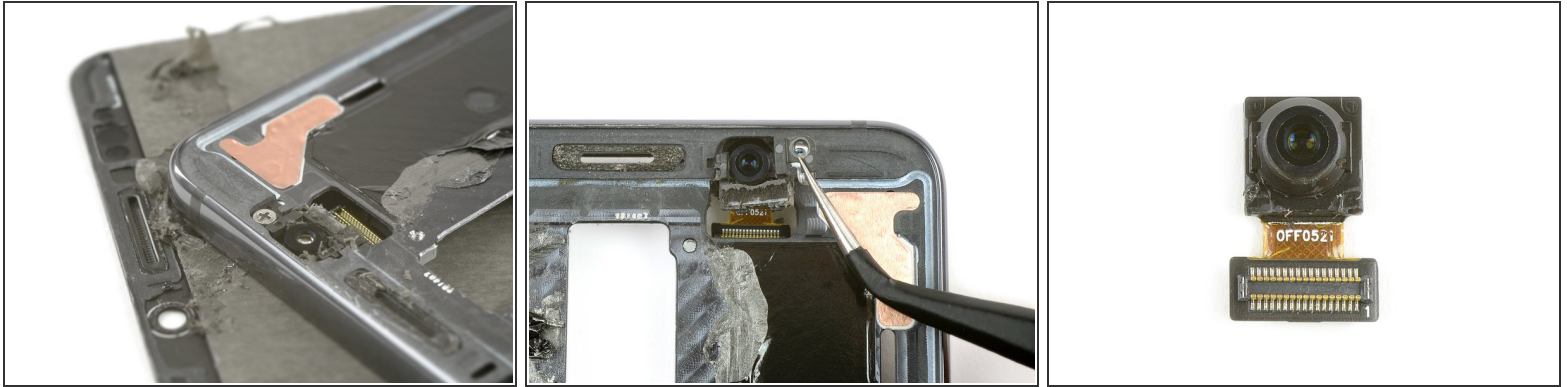
- The earpiece speaker is glued in quite well, but the teardown gods blessed us with a bladed spudger and we know how to use it.
- ① Huawei touts the Mate 10 Pro's AI technology for boosting and enhancing low-volume calls, while noisy calls are transformed into high quality conversations.
- Compared to the earpiece speaker, the IR blaster is a piece of cake to remove and literally jumps out in our hands.

## Step 16



- When it comes to the front-facing camera, we're not quite so pleased—it's very tightly secured in the midframe of the Mate 10 Pro. It wiggles a little, but removing it cleanly is going to be a challenge. So we focus on the display first.
- But getting in between the display and the frame also looks to be a near-impossible task. No amount of heating, pulling, or prying saw any success. The front panel is glued tight and the tolerances are so small that there is simply no gap.
- Our only chance is the hole in the midframe for the dual camera. And after using most of the wedging arsenal starting with a Halberd Spudger to an Opening Tool to a regular Spudger we end up with a metal Spudger. And finally a small gap opens up.

## Step 17



- Again we grab the Halberd Spudger and slide around the edge to free the display just to discover the reason for the intractable front camera—one single screw.
- ⓘ This one is the white sheep under all the black screws—not just because of the color, but also the material. It sticks to our bits and the magnetic mat like expected.
- With the screw removed we realize that the bracket and the camera itself can only be accessed from this side. So no front camera repair without forcing off the display. We wonder who has to walk the engineering plank for this.
- ⓘ Nevertheless, the front camera packs 8 MP and a f/2.0 aperture. Huawei says the Mate 10 Pro evokes a professional bokeh effect by shifting the focal point onto the subject of the photograph, for more dramatic portraits and selfies.

## Step 18



- This is as far as we get. Time to rate our experience aboard this flagship. This could have been a jolly cruise.

## Step 19 — Final Thoughts

### REPAIRABILITY SCORE:



- The Mate 10 Pro earns a **4 out of 10** on our repairability scale (10 is the easiest to repair):
  - Despite the IP67-rated seals, the back cover is fairly easy to open.
  - The USB port, loudspeaker, and motherboard are easy to remove.
  - The Mate 10 Pro has very few screws, all standard Phillips but unimpressed by magnetism—except for one, which is buried underneath the display.
  - With only one big cable, the Mate 10 Pro is cleanly arranged—although that cable is soldered to the USB port.
  - A damaged front camera means switching the whole display including the frame, or damaging the display while trying to remove it.
  - And replacing the display—the most common repair—means taking out almost every component.