



Huawei Mate 20 Pro Battery Disconnect Procedure

prereq battery disconnect

Written By: Dominik Schnabelrauch



INTRODUCTION

prereq battery disconnect



TOOLS:

- [Phillips #00 Screwdriver](#) (1)
- [iOpener](#) (1)
- [Suction Handle](#) (1)
- [iFixit Opening Picks set of 6](#) (1)
- [Spudger](#) (1)



PARTS:

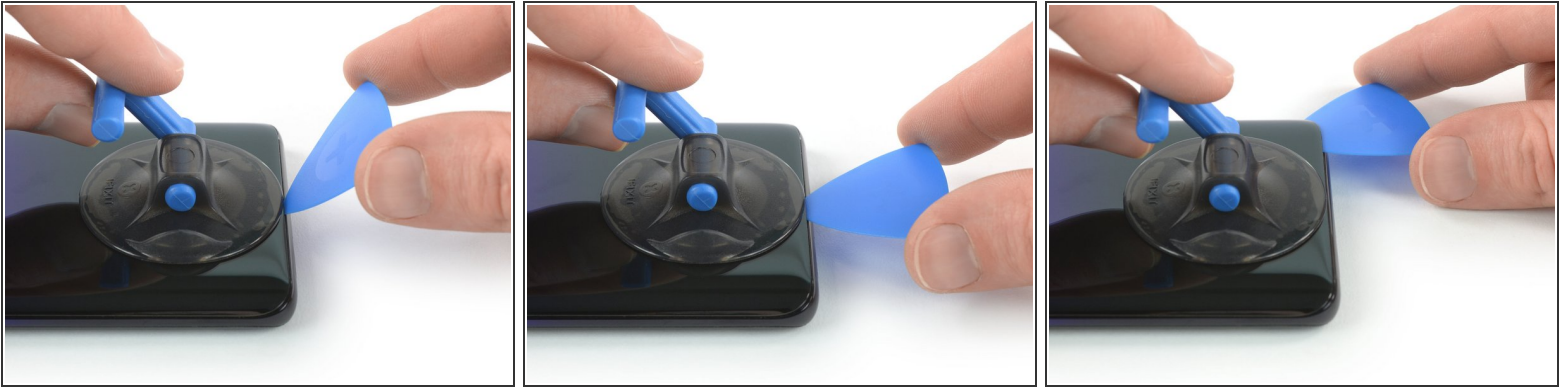
- [Tesa 61395 Tape](#) (1)

Step 1 — Rear Glass



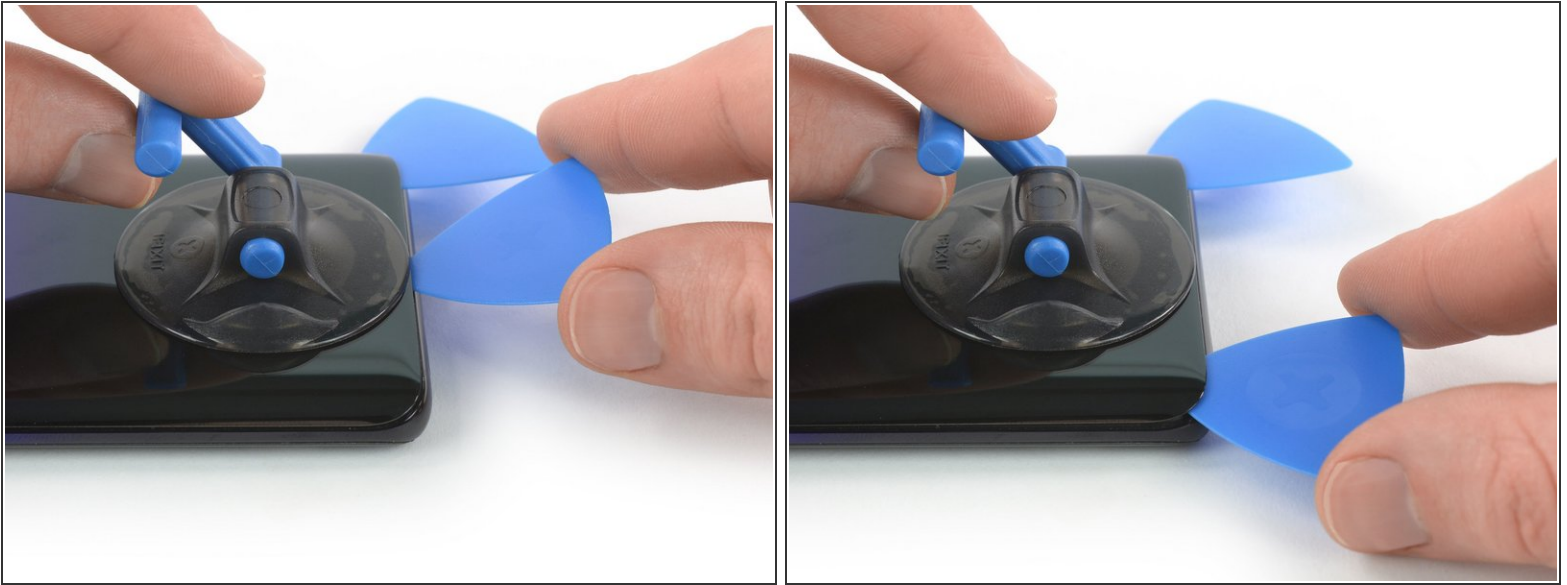
- Before you begin, switch off your phone.
- Apply a [heated iOpener](#) to the back of the phone to loosen the adhesive beneath the back cover. Apply the iOpener for at least two minutes.

Step 2



- Secure a suction handle to the bottom of the back cover, as close to the edge as possible.
 - ⓘ If the phone's rear glass is cracked, the suction handle may not stick. Try [lifting it with strong tape](#), or superglue the suction handle in place and allow it to cure so you can proceed.
- Lift the back cover with the suction handle to create a small gap between the cover and the frame.
- Insert an opening pick into the gap.
 - ⓘ If you have trouble, apply more heat to further soften the adhesive. Follow the iOpener instructions to avoid overheating.
- Slide the opening pick to the bottom right corner.

Step 3



- Insert a second opening pick and slide it to the bottom left corner to cut the adhesive.
- Leave the opening picks in place to prevent the adhesive from resealing.

Step 4



- Insert a third opening pick at the bottom left corner.
- Slide the tip of the opening pick from the bottom left corner along the side of the phone to cut the adhesive.
- Leave the opening pick in its place at the top left corner to prevent the adhesive from resealing.

Step 5



- If the adhesive becomes hard to cut, it has most likely cooled down. [Use your iOpener](#) to reheat it.
- Insert a fourth opening pick under the top left corner of the back cover.
- Slide the opening pick along the top edge of the phone to cut the adhesive.
- Leave the opening pick in the top right corner to prevent the adhesive from resealing.

Step 6



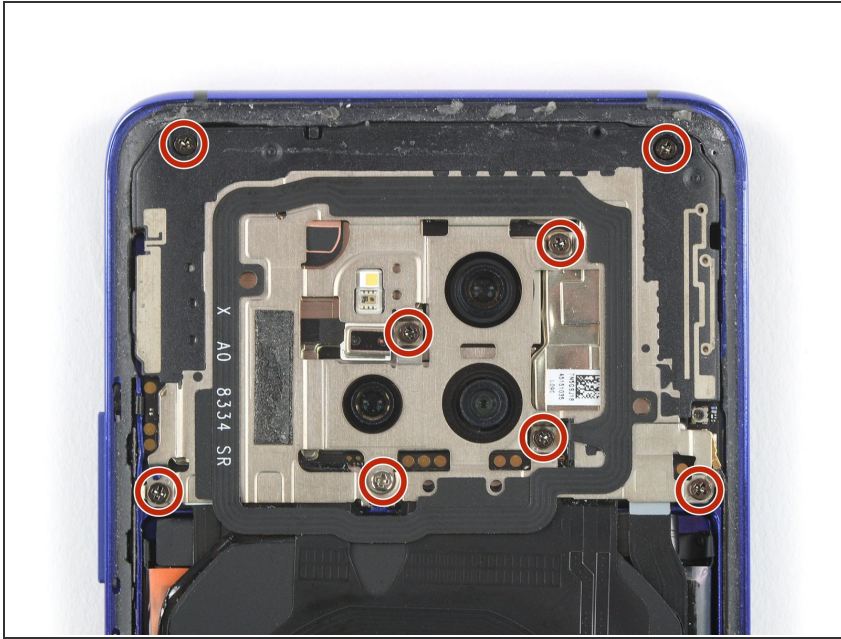
- Insert a fifth opening pick at the top right corner of the phone.
- Slide the opening pick along the right side to cut the remaining adhesive.

Step 7



- Lift and remove the back cover.
- ✦ Before installing fresh adhesive and reassembling, remove any remaining adhesive from the phone, and clean the glued areas with isopropyl alcohol and a lint-free cloth.
- ✦ During reassembly, this is a good point to power on your phone and test all functions before sealing it up. Be sure to power your phone back down completely before you continue working.
- ✦ Secure the new back cover with pre-cut adhesive or double-sided adhesive tape. [After installing the rear glass](#), apply pressure for several minutes to help the adhesive form a good bond, such as by placing it under a stack of heavy books.

Step 8 — Motherboard Cover with NFC & Charging Coil



- Remove the eight Phillips #00 screws (4.3 mm length).

Step 9




- Slide an opening pick under the black adhesive at the bottom left of the charging coil.
- Carefully slide the opening from the left to the right side to loosen the adhesive.

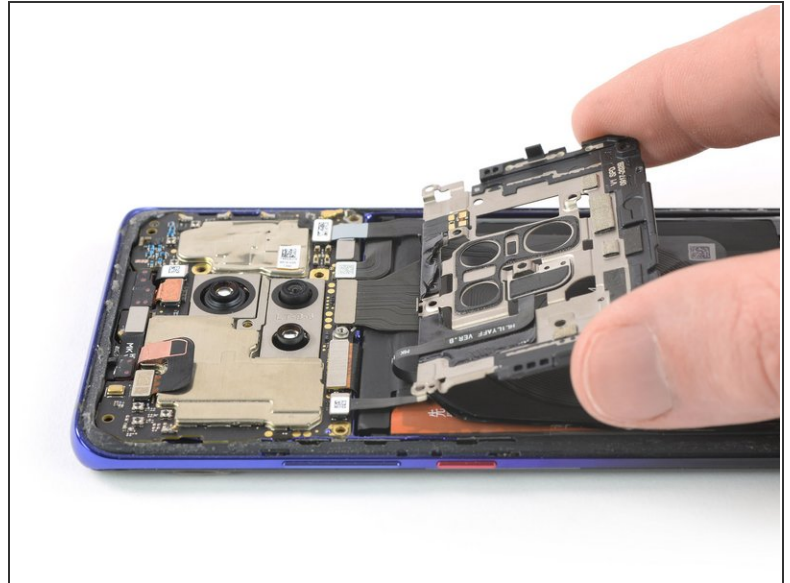
Step 10




- Insert an opening pick under the bottom left corner of the motherboard cover.
- Use the opening pick to pry up the motherboard cover.

 Do not try to remove the motherboard cover all the way yet. The flex cable of the flash assembly is still connected to the motherboard.

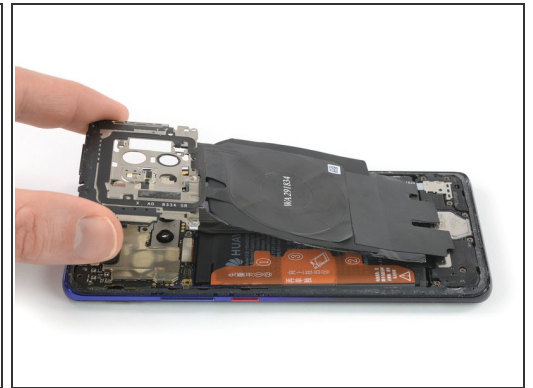
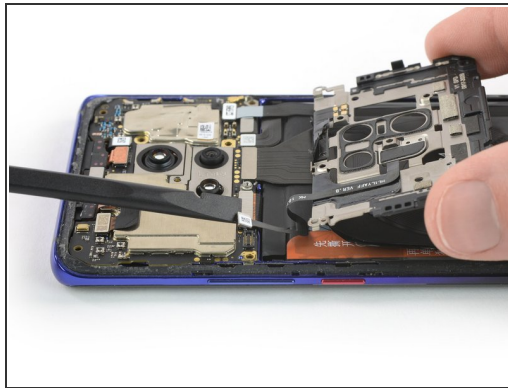
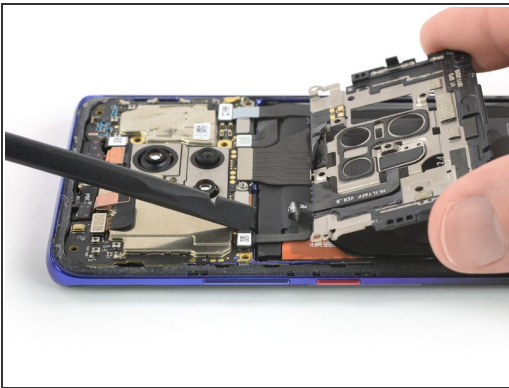
Step 11



- Carefully fold the motherboard cover in the direction of the battery.

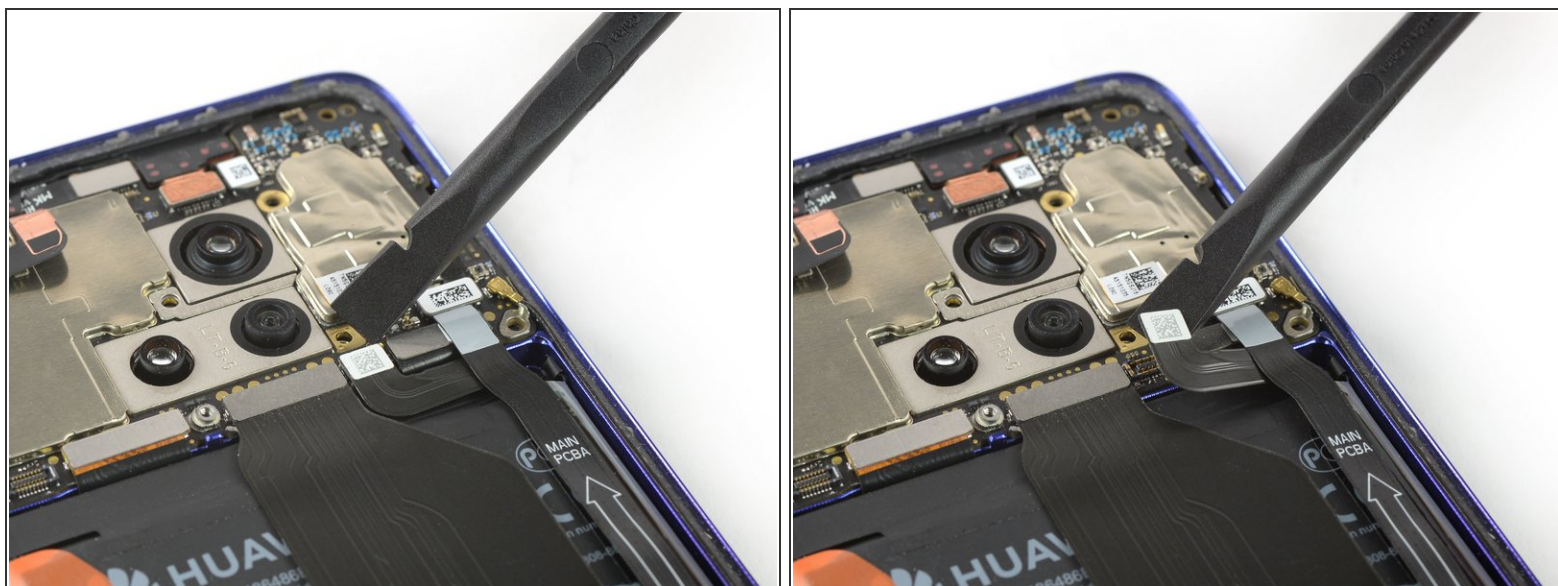
 Take special care to avoid ripping the flash assembly flex cable as it is still connected to the motherboard.

Step 12



- Use a spudger to pry up and disconnect the flash assembly flex cable.
 - ☒ When you disconnect connectors like these, be careful not to dislodge the small surface-mounted components surrounding the socket.
- Remove the motherboard cover including the NFC and charging coil.

Step 13 — Battery Disconnect



- Use a spudger to pry up and disconnect the battery connector.

To reassemble your device, follow these instructions in reverse order.