



Huawei Mate 20 Pro Power or Volume button Replacement

Fix your Volume or Power button problems if the ribbon is working

Written By: Rory Clements



INTRODUCTION

This guide will show you how you can remove the volume or power button in a Huawei Mate 20 Pro (I assume other models may be similar)

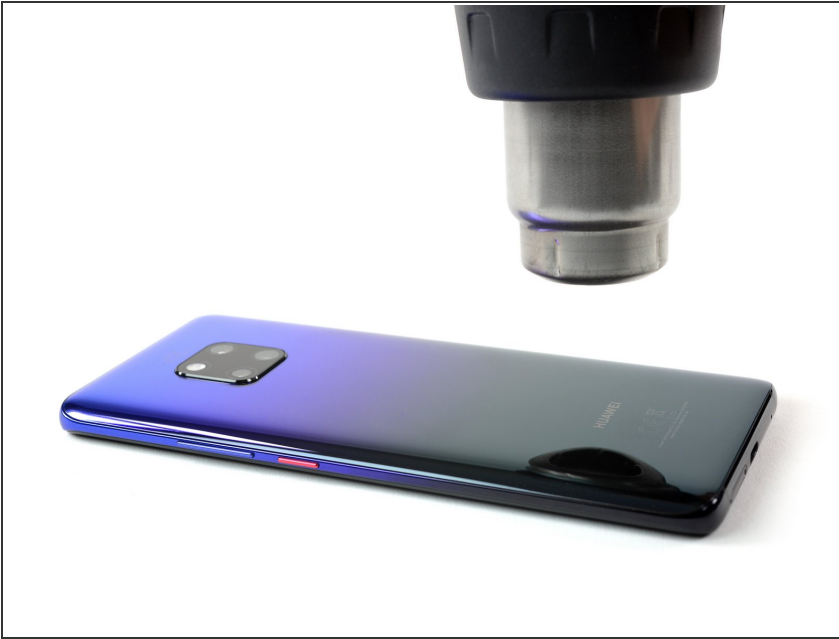
Useful if the button has stopped working, there is too much travel before it triggers or the ribbon is still working but the button does not activate it.



PARTS:

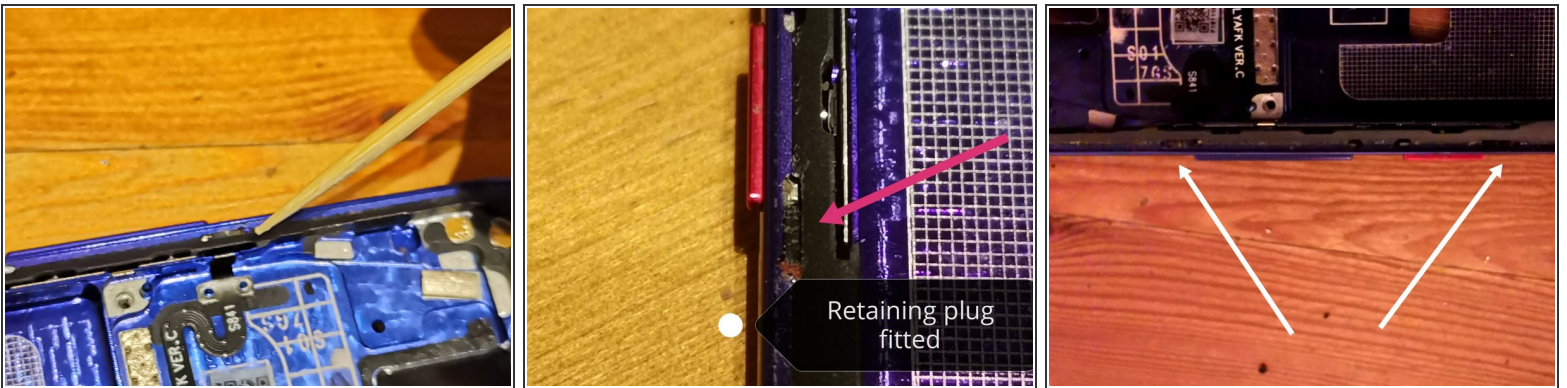
- [Volume or Power button](#) (1)
-

Step 1 — Remove the back glass



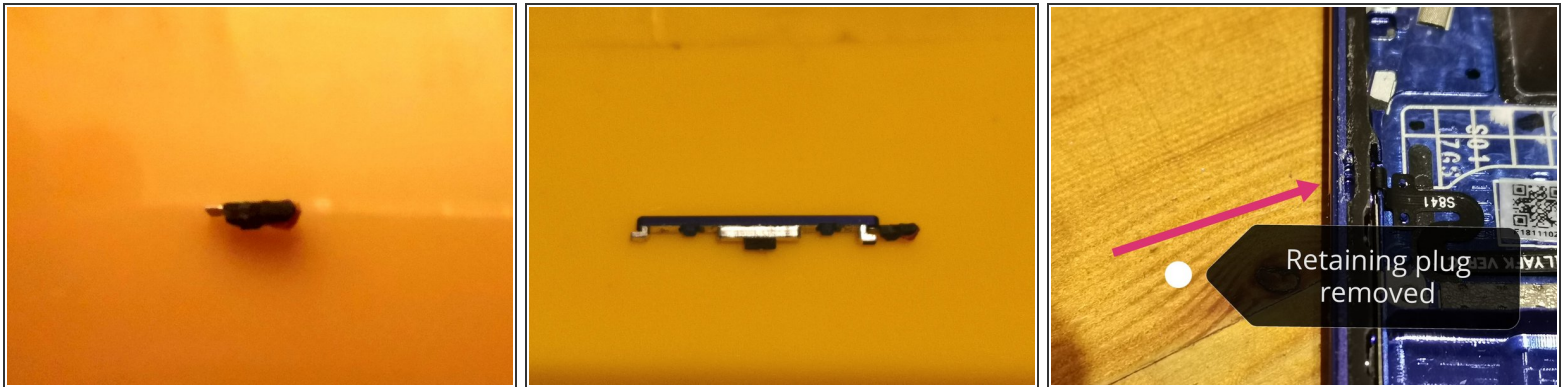
- Remove the back glass as described in this guide.
- [Huawei Mate 20 Pro Teardown](#)

Step 2 — Remove the switch retaining plug



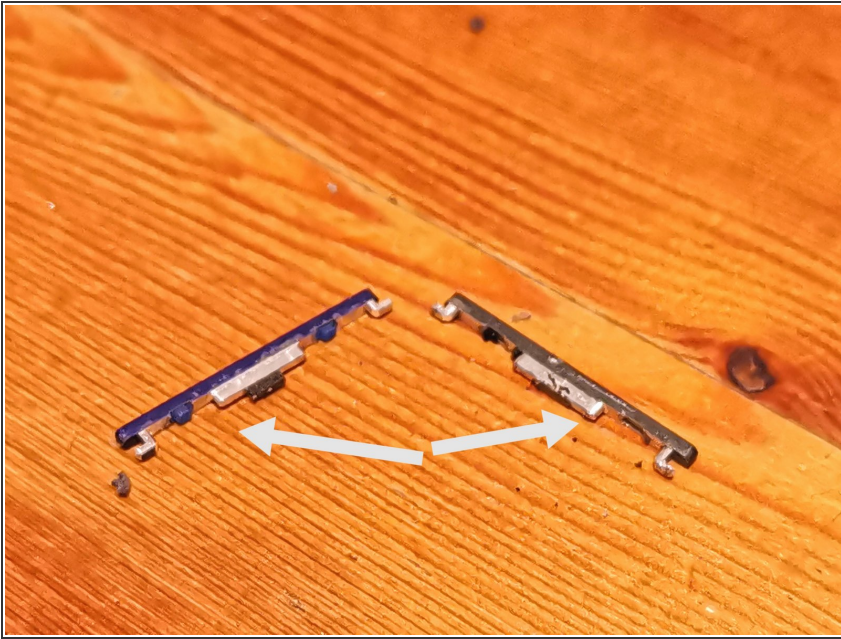
- Once inside look at the area indicated within the pictures and you can see the retaining plugs, one for volume and one for power.
- (It looks like the retaining plug may slide to release the switch but that was not the case with mine.)
- Instead with sharp tweezers you can gently pry it out.
- Once the retaining plug is removed you can free the volume or power switch.

Step 3 — Testing the switch and refitting the plug



- The first picture is the plug, look closely how it locks the switch in. The second picture is how it retains the switch.
- Check for debris within the switch space. Temporarily relocate the switch and check that it functions correctly, you should see the pins contacting the volume/power ribbon switches. If not you may have another issue.
- Refit the switch by depressing it on the retaining side and and push the retaining plug back in (making sure it is orientated correctly)
- Make sure the plug is now located properly within the midframe and that the switch functions correctly.

Step 4 — Why the switch fails



- The reason why the switch will have stopped working is clear in the picture
- The switch has lost the lumps which contact the pin in turn pushing the ribbon switches
- Without these nothing happens.
- Hopefully this guide has helped as I could not find any information on the internet. I ended up buying a 2nd hand midframe to experiment with.
- As a result I must be in a small minority of chrome mate 20 pro's with a purple volume button :-) !

To reassemble your device you can just reuse the adhesive and stick on the back glass, some heat will make it adhere better. (check your lenses and lens glass inside and out are clean before reassembly! ask me how I know..)

NOTE: It will obviously now have no guarantee of water resistance, if you want a better guarantee you should remove all adhesive from the midframe and back glass.

Then install a new glass adhesive to the frame and replace the back. (even with this I would still be very cautious with matching the original IP rating)